

# THE DOWNTOWN CHANDLER COMMUNITY PARTNERSHIP

## Special Event Partnership Opportunities

### Welcome to Downtown Chandler!

The Downtown Chandler Community Partnership (DCCP) is interested in developing partnerships with Event Producers to advance our mission by collaborating on the development of regional event(s) that will provide our visitors with a unique cultural experience in Downtown Chandler.



The DCCP is a 501(c) 6 not-for-profit corporation whose mission is to mobilize leadership and resources to advance the development of Downtown Chandler as a regional destination for shopping, dining, living, culture and the arts. With your partnership, we can give back to the 100+ small businesses that we support in the Downtown in the areas of marketing, public relations, safety and beautification.

#### Downtown Chandler Historic & Entertainment District by the Numbers:

- Dining: 43 restaurants / bars
- Retailers: 7
- Business Services: 50
- Hotels / Meeting Spaces: 4
- Hotel Rooms: 359
- Arts / Entertainment: 4
- Downtown Workforce Population: 2,250
- Downtown Residential Population: 21,553
- Median Income: \$50,000 - \$74,000
- Average Downtown Daily Traffic: 32,512
- Maricopa County Population: 4,329,58
- Chandler Population: 257,165

# THE DOWNTOWN CHANDLER COMMUNITY PARTNERSHIP

## Special Event Partnership Opportunities

Downtown Chandler is the premiere live entertainment scene in the valley, with 11 stages in 6 walk-able blocks. We have a variety of public art installations and a dedicated gallery. Let's take a closer look.

### The Chandler Center for the Arts

With three dynamic performance spaces - the 1500-seat Main Stage, the 350-seat Hal Bogle Theatre, and the 250-seat Recital Hall, as well as two extensive art galleries - The Gallery at CCA and Vision Gallery - Chandler Center for the Arts presents the work of today's most engaging, enlightening and relevant visual and performance artists.



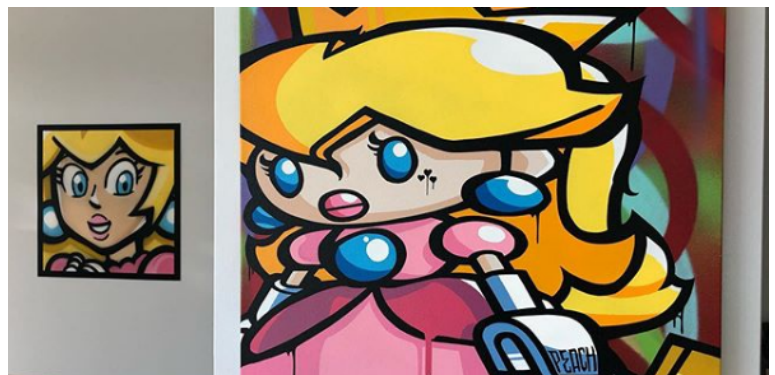
### Downtown Live

You'll find live entertainment 7 nights a week in Downtown Chandler! This includes live standup from the team at improvMANIA and music in Bourbon Jacks American Tavern, Murphy's Law Irish Pub, The Local Chandler, West Alley BBQ, The Perch and more.



### Public Art

The Vision Gallery is a fine arts gallery representing over 300 regional artists with standing and rotating exhibits. The Gallery also maintains Chandler's 35 public art pieces, including installations and murals.



CONTACT: Mary Murphy-Bessler, Executive Director (480) 855-3539 [mary@downtownchandler.org](mailto:mary@downtownchandler.org)

# THE DOWNTOWN CHANDLER COMMUNITY PARTNERSHIP

## Special Event Partnership Opportunities

Did you know there are **five free parking garages** in Downtown Chandler **plus** an abundance of **surface parking**?

- 2 Free of Charge Garages 24/7: Overstreet Garage and the Oregon St. Garage
- 3 Garages are Free of Charge after 5 p.m. and on weekends
- Number of Parking Spaces: 3,300



CONTACT: Mary Murphy-Bessler, Executive Director (480) 855-3539 [mary@downtownchandler.org](mailto:mary@downtownchandler.org)



# THE DOWNTOWN CHANDLER COMMUNITY PARTNERSHIP

## Special Event Partnership Opportunities

### **Dr. A.J. Chandler Park West**

Located in the heart of the Downtown Chandler historic district, Dr. A.J. Chandler Park West is centrally located to some of our finest dining, retail shops and hotels. The park boasts two electric panels and has the capability to accommodate a lighter, portable stage.



Dr. A.J. Chandler Park West

In addition to the park, producers may request to close the surrounding streets on Commonwealth Ave. and San Marcos Pl. for street fairs or car shows. The DCCP can help you work with both our Downtown businesses and the City of Chandler on the review and approval process for this.

### **Dr. A.J. Chandler Park Stage Plaza**

This popular event space is located just off Arizona Pl. and Commonwealth St. behind The Alexander building and adjacent parking garage. The stage itself faces south and boasts front of house electricity, lighting and placement for banners. The stage radius is approximately 34' - 11". The lawn area is approximately 86,410 square feet. The space can fit approximately 13,100 people sitting/standing. These numbers decrease as booths, structures or other event items are placed in the space.

### **Dr. A.J. Chandler Park East**

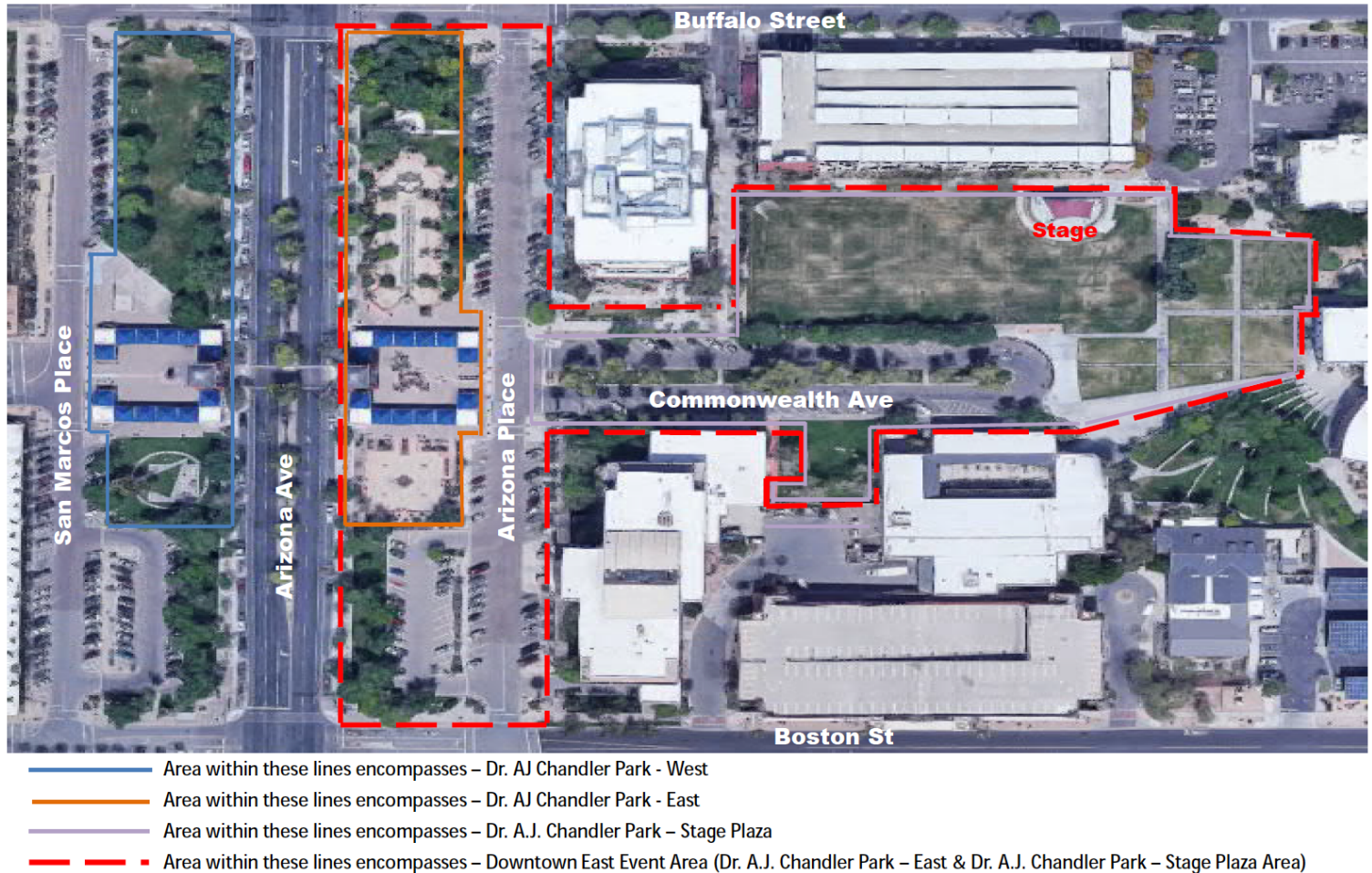
Located just off Arizona Pl. between Boston St. and Buffalo St., This smaller area can be rented separately or in conjunction with the Stage Plaza. When combined, this is referred to as the "Downtown East Event Area" on the City of Chandler Special Event Application. It can hold approximately 26,000 people sitting/standing.

CONTACT: Mary Murphy-Bessler, Executive Director (480) 855-3539 [mary@downtownchandler.org](mailto:mary@downtownchandler.org)



# THE DOWNTOWN CHANDLER COMMUNITY PARTNERSHIP

## Special Event Partnership Opportunities



There are two different options for collaboration that we'd love for you to consider:

- Special Event Partnership Opportunities.....Page 6
- Non-Profit Partnership Opportunities.....Page 9

CONTACT: Mary Murphy-Bessler, Executive Director (480) 855-3539 [mary@downtownchandler.org](mailto:mary@downtownchandler.org)

# THE DOWNTOWN CHANDLER COMMUNITY PARTNERSHIP

## *Special Event Partnership Opportunities*

### SPECIAL EVENT PARTNERSHIP

Whether it's a brand new event concept or an established event, the DCCP is happy to partner with you and bring an expert eye for creativity to the event planning process. When we produce an event with you, there a variety of services and benefits that are exclusively available to our organization, including site fee waivers, reduced equipment rentals, application support, and the use of liquor license and liability insurance.

That's right. We'll do the heavy lifting on submitting special event applications and obtaining alcohol permits from both the City of Chandler and the State of Arizona. We'll also use our own liability insurance so that you don't have to pay to do so.

#### **Additional benefits:**

- **Access to Premium Blackout Dates**
- Pre-event Ticket Promotion
- **DCCP Site Fee Waivers and Reduced Fees**
- Joint Marketing, Promotion and Social Media Resources
- **Reduced Equipment Rental including: showmobile, staging, bleachers**
- Potential Grant Opportunities

#### **Marketing / Promotional Support:**

- Joint promotion on Downtown Chandler social pages with over 24,600 collective followers
- Inclusion in Downtown Chandler business and public email distribution lists
- Placement on DowntownChandler.org events calendar and a dedicated webpage
- Ability to have a booth at other DCCP produced events such as the Downtown Chandler Farmers Market to promote your event, sell tickets or offer advance registration.
- Communication and promotional support with Downtown businesses
- Communication support with the City of Chandler

\*In order to obtain these benefits, the DCCP must be listed as the event producer on the City of Chandler Special Event Application.

# THE DOWNTOWN CHANDLER COMMUNITY PARTNERSHIP

## *Special Event Partnership Information*

### SPECIAL EVENT PARTNERSHIP

#### FEE ASSISTANCE:

- City of Chandler Application Fee: \$50
- City of Chandler Alcohol Permit Fee: \$25 per day / per event
- State of Arizona Alcohol Permit Fee: \$25 per day / per event
- Liability Insurance
- Dr. A.J. Chandler Park West: \$270 per hour / per event
- Dr. A.J. Chandler Park West: set up & tear down \$45 per hour / per event
- Dr. A.J. Chandler Park – Stage Plaza: \$420 per hour / per event
- Dr. A.J. Chandler Park – Stage Plaza: set up and tear down \$45 per hour / per event

#### FEES TO BE REDUCED:

- Downtown East Event Area:  
\$345 per hour / per event
- Showmobile and portable  
staging: \$163 per day/ per  
event (pictured)
- Bleachers: \$250 per day /  
per event



Downtown Chandler Friday Night Live

See next page for savings

CONTACT: Mary Murphy-Bessler, Executive Director (480) 855-3539 [mary@downtownchandler.org](mailto:mary@downtownchandler.org)



# THE DOWNTOWN CHANDLER COMMUNITY PARTNERSHIP

## *Special Event Partnership Information*

### SPECIAL EVENT PARTNERSHIP

#### EXAMPLE SAVINGS FOR A ONE DAY, 8-HOUR EVENT:

##### **Dr. A.J. Chandler Park – Stage Plaza\***

Application / Permit Fees: \$100

Dr. A.J. Chandler Park Site Fees: \$3,360

Set Up/Tear Down Fees: \$360

**TOTAL SAVINGS: \$3,820**

##### **Dr. A.J. Chandler Park West\***

Application / Permit Fees: \$100

Dr. A.J. Chandler Park West Site Fees: \$2,160

Set Up/Tear Down Fees: \$360

Showmobile: \$163

**TOTAL SAVINGS: \$2,783**

\*Fees subject to change

If you wish to close down a street in the Downtown, the DCCP can help facilitate this with City Staff, Police and Fire.



KNIX BBQ & Beer Festival

CONTACT: Mary Murphy-Bessler, Executive Director (480) 855-3539 [mary@downtownchandler.org](mailto:mary@downtownchandler.org)

# THE DOWNTOWN CHANDLER COMMUNITY PARTNERSHIP

## *Special Event Partnership Information*

### NON-PROFIT SPECIAL EVENT PARTNERSHIP

You may also select the DCCP as the non-profit alcohol recipient for your event. This comes with a number of benefits that are exclusive to our organization. Your partnership allows us to give back to the 100+ businesses that we support through marketing, safety, beautification and promotion.

#### **Benefits of partnering with us:**

When you choose to partner with the DCCP as the 25% non-profit alcohol recipient for your event, we'll do the heavy lifting on **submitting special event applications** and **obtaining alcohol permits** from both the City of Chandler and the State of Arizona. We'll also use our own **liability insurance** so that you don't have to pay to do so.



KNIX BBQ & Beer Festival

#### **Additional benefits:**

- Joint promotion on Downtown Chandler social pages with over 24,600 collective followers
- Inclusion in Downtown Chandler business and public email distribution lists
- Placement on DowntownChandler.org events calendar and a dedicated webpage
- Ability to have a booth at other DCCP produced events such as the Downtown Chandler Farmers Market to promote your event, sell tickets or offer advance registration.
- Communication and promotional support with Downtown businesses
- Communication support with the City of Chandler
- Volunteer Support
- Potential Grant Opportunities

CONTACT: Mary Murphy-Bessler, Executive Director (480) 855-3539 [mary@downtownchandler.org](mailto:mary@downtownchandler.org)

# THE DOWNTOWN CHANDLER COMMUNITY PARTNERSHIP

## *Special Event Partnership Information*

### NON-PROFIT SPECIAL EVENT PARTNERSHIP

#### FEES ASSISTANCE\*

- City of Chandler Application Fee: \$50
- City of Chandler Alcohol Permit Fee: \$25 per day / per event
- State of Arizona Alcohol Permit Fee: \$25 per day / per event

While we can't waive the fees for Dr. A.J. Chandler Park East or the Stage Plaza in this capacity, we can waive fees for Dr. A.J. Chandler Park West:

- Dr. A.J. Chandler Park West: \$270 per hour / per event
- Dr. A.J. Chandler Park West: set up & tear down \$45 per hour / per event

#### EXAMPLE SAVINGS FOR A ONE DAY, 8-HOUR EVENT\*

- Application / Permit Fees: \$100
- Dr. A.J. Chandler Park West Site Fees: \$2,160
- Set Up / Tear Down Fees: \$360

**TOTAL SAVINGS: \$2,620**

\*Fees subject to change

If you wish to close down a street in the Downtown, the DCCP can facilitate this with City Staff, Police and Fire.



SanTan Oktoberfest

CONTACT: Mary Murphy-Bessler, Executive Director (480) 855-3539 [mary@downtownchandler.org](mailto:mary@downtownchandler.org)



# THE DOWNTOWN CHANDLER COMMUNITY PARTNERSHIP

## *Special Event Partnership Information*

**Thank You For Your Consideration!**

### **Contact Information:**

Mary Murphy-Bessler

Executive Director

Mary@downtownchandler.org

(480) 855-3539 #2

### **Connect with Us**

Facebook: @DowntownChandler

Instagram: @DowntownChandler

www.DowntownChandler.org

dccp@downtownchandler.org

