

**FLAGSTAFF DOWNTOWN BUSINESS IMPROVEMENT
AND REVITALIZATION DISTRICT OF FLAGSTAFF, ARIZONA**

RESOLUTION NO. 2016-04

A RESOLUTION OF THE DISTRICT BOARD OF THE FLAGSTAFF
DOWNTOWN BUSINESS IMPROVEMENT AND REVITALIZATION
DISTRICT OF FLAGSTAFF ADOPTING THE PROPERTY TAX
ASSESSMENTS FOR FY2016-2017

WHEREAS, by the provisions of State law, the resolution levying taxes for fiscal year 2016-2017 is required to be finally adopted not later than the third Monday in August, and

WHEREAS, the County of Coconino is the assessing and collecting authority for the Flagstaff Downtown Business Improvement and Revitalization District of Flagstaff, Arizona ("District").

NOW, THEREFORE, BE IT RESOLVED BY THE DISTRICT BOARD OF THE FLAGSTAFF DOWNTOWN BUSINESS IMPROVEMENT AND REVITALIZATION DISTRICT OF FLAGSTAFF, ARIZONA AS FOLLOWS:

Section 1. There is hereby levied a secondary property tax which is a sum certain based on the 2016 Tax Year assessed value of all real property within the boundaries of the Flagstaff Downtown Business Improvement and Revitalization District of Flagstaff, Arizona, except such property as may be by law exempt from taxation or is excluded from the District, which includes any story above the second floor, for the fiscal year ending on the 30th day of June, 2017.

Section 2. That the District Clerk is hereby directed to transmit a certified copy of this resolution to the County Assessor and the Board of Supervisors of the County of Coconino, Arizona.

Section 3. Effective Date. The tax levy imposed by this Resolution shall take effect August 1, 2016.

PASSED by the District Board of the Flagstaff Downtown Business Improvement and Revitalization District this 21st day of June, 2016.

Chairman

ATTEST:

District Clerk

APPROVED AS TO FORM:

Kjellgren & Speed, PLC
Dana H. Kjellgren

Attorney for the District

ATTACHMENTS:

Attachment A: Legal Description of District

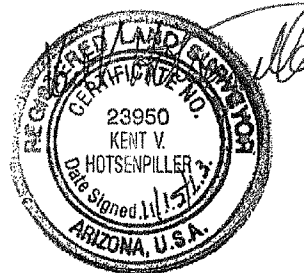
Attachment B: Assessment by Parcel within the District

EXHIBIT A

The following is a description of parcels of land as shown on the Flagstaff Plat as recorded in Book 1 of Maps, Page 16, Coconino County Records, situate in the SE¼ of section 15 and the SW¼ of section 16, Township 21 North, Range 7 East, G.& S.R.M., Flagstaff, Coconino County, Arizona being more particularly described as follows:

Lots 1 through 12, Block 3A of said plat;
Lots 1 through 12, Block 34 of said plat;
Lots 1 through 12, Block 33 of said plat;
Lots 1 through 24, Block 32 of said plat;
Lots 1 through 27, Block 2A of said plat;
Lots 1 through 26, Block 19 of said plat;
Lots 1 through 24, Block 18 of said plat;
Lots 1 through 24, Block 17 of said plat;
Lots 1 through 24, Block 1A of said plat;
Lots 1 through 24, Block 6 of said plat;
Lots 1 through 24, Block 5 of said plat;
Lots 1 through 24, Block 4 of said plat;

Assessor Parcel 100-44-006A, ATSF Railroad;
Assessor Parcel 100-44-001, BNSF Railroad;
Assessor Parcel 100-44-002A, BNSF Railroad;
Assessor Parcel 100-44-006B, Flagstaff Chamber of Commerce;
Assessor Parcel 100-44-005A, City of Flagstaff;
Assessor Parcel 100-44-004D, City of Flagstaff;
Assessor Parcel 100-44-003E, BNSF Railroad;
Assessor Parcel 100-44-003C, City of Flagstaff;
Assessor Parcel 100-44-004E, City of Flagstaff;
Assessor Parcel 101-27-002D, City of Flagstaff;
Assessor Parcel 101-27-002C, ATSF Railroad;
Assessor Parcel 101-27-001C, BNSF Railroad;



Expires: 8/31/15

Including the Rights-of-Way as shown.

Exclusions from District:

1. With respect to any multi-story building located in the district, any story above the second floor shall be excluded from the district. In the event a new building is constructed after formation of the district, the same rule shall apply. For district purposes, the property value of that portion of a multi-story building located within the district shall be determined by the Coconino County Assessor.
2. All personal property, as determined by the Coconino County Assessor.

Said parcels shown on the attached Exhibit B which by this reference is made a part hereof.

Mogollon Engineering and Surveying, Inc.

411 W. Santa Fe Ave. Flagstaff, AZ 86001- P.O.-Box 1952 Flagstaff, AZ 86002-mogollon99@aol.com- 928-214-0214

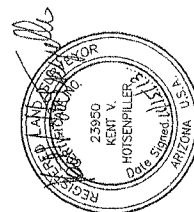
**FLAGSTAFF BUSINESS
IMPROVEMENT AND
REVITALIZATION DISTRICT
LEGAL DESCRIPTION EXHIBIT**

FLAGSTAFF TOWNSITE, BOOK
1 OF MAPS PAGE 16,
COCONINO COUNTY RECORDS
LOCATED IN THE SE1/4
SECTION 16 AND THE SW1/4
SECTION 15, T 21 N, R 7 E,
FLAGSTAFF, COCONINO
COUNTY, ARIZONA

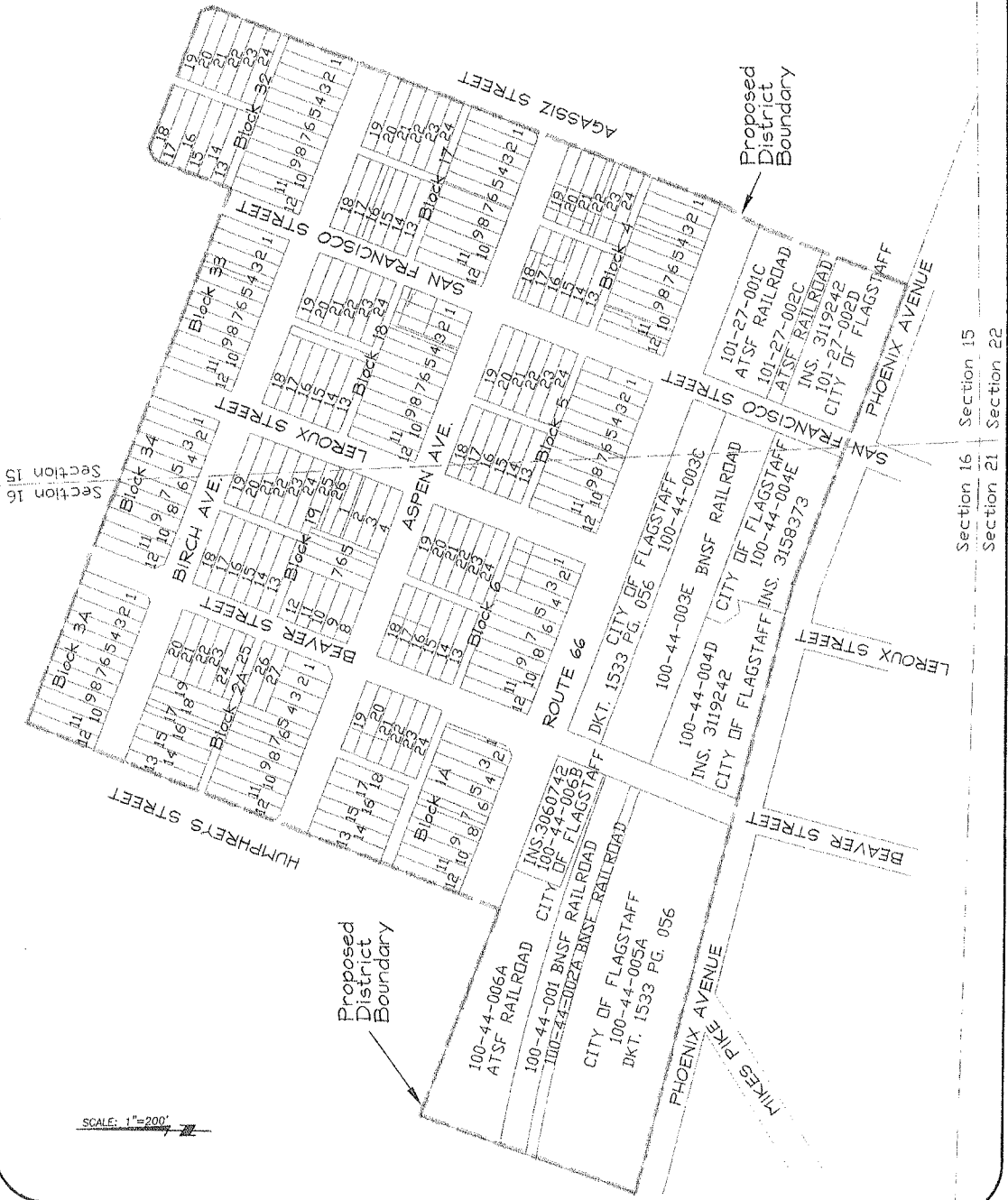
Including the Rights-of-Way as shown.

Exclusions from District:

1. With respect to any multi-story building located in the district, any story above the second floor shall be excluded from the district. In the event a new building is constructed after formation of the district, the same rule shall apply. For district purposes, the property value of that portion of a multi-story building located within the district shall be determined by the Coconino County Assessor.
2. All personal property, as determined by the Coconino County Assessor.



Information shown hereon is from
City of Flagstaff G.I.S. No field
work was performed by **MOCOLLON**
Engineering & Surveying, Inc.



20001 - FLAG DWTN REV DIST

Tax Year: 2016
Budget: \$ 131,900
Factor: 1.6862

*Note: Salmon highlight indicates adjusted value calculated.

*Special district approved at rate of 1.7896 for 2015

Account Number	Parcel Number	Primary Net Assessed	Assessment Amount	Owner
C0008407	10019002, 10019020	895,064	15,093	QWEST CORPORATION
C0055218	10044001, 1004402A, 10044003E	22,703	383	BNSF RAILWAY COMPANY
R0010074	10021007A	67,467	1,138	MTSE HOLDINGS 2016001 LLC, TREJO INVESTMENTS LLLP, VIEL GLUCK LIMITED PARTNERSHIP, BEN FATTO LIMITED PARTN
R0012364	10019007	113,579	1,915	GEILE MANAGEMENT LLC
R0028356	10019012	111,938	1,887	MTSE HOLDINGS 2016001 LLC, TREJO INVESTMENTS LLLP, VIEL GLUCK LIMITED PARTNERSHIP, BEN FATTO LIMITED PARTN
R0028359	10019016	47,514	801	MATTINGLY ALBERT PAUL JR & PATSY S
R0028360	10019017	56,533	953	KKMHM PROPERTIES LLC
R0028361	10019018	77,369	1,305	ABLE BUILDING LLC
R0028362	10019019	26,464	446	MTSE HOLDINGS 2016001 LLC, TREJO INVESTMENTS LLLP, VIEL GLUCK LIMITED PARTNERSHIP, BEN FATTO LIMITED PARTN
R0061633	10020002	35,601	600	PUCHTECTA INVESTMENT GROUP LLC
R0061634	10020003	29,834	503	DENUNE LIVING TRUST DTD 10/25/00
R0061637	10020007	22,176	374	RAMSEY'S PROPERTIES LLC
R0061638	10020008	26,980	455	KIRSCHNICK RON
R0061639	10020009	31,432	530	GEE ROBERT & LILY TRUSTEES
R0061640	10020010	65,605	1,106	LEROUX/66 LLC
R0061642	10020013	85,697	1,445	MERKLI EDWARD A & MARTHA M REVOCABLE LIVING TRUST DTD 7-20-09
R0061643	10020014	21,984	371	STILLEY PETER B & MOLLY W
R0061644	10020015	112,618	1,899	ASPEN GROVE LLC
R0061645	10020016	72,185	1,217	SWITZER BUILDING GROUP L L C
R0023890	10020017	110,372	1,861	ASPEN CONSOLIDATED INVESTMENTS LLC
R0010378	10020018	121,460	2,048	FLEMING BROTHERS LLC
R0010381	10020023	74,471	1,256	MT JULIET PROPERTIES LLC
R0010382	10020024	44,563	751	ODEGAARD VAN H
R0010384	10020026	141,643	2,388	WEATHERFORD HOTEL INC
R0046285	10020027	54,498	919	STILLEY PROPERTIES LLC
R0046286	10020028	17,111	289	SCHEURING MARY L TRUSTEE ; SCHEURING ML RVCBL LVNG TRST DTD 8-12-04
R0046289	10021005	68,254	1,151	BERARDI INVESTMENTS NO 2 LLC

R0046290	10021006	21,147	357	TULSI 1 LLC
R0011648	10118001	9,136	154	BENNETT FRANKIE KATHERINE
R0011649	10118002	66,433	1,120	BOYER RC & PM FMLY TRUST DTD 10-19-98
R0011651	10118004	167,880	2,831	ARIZONA BANK
R0042526	10119002	17,179	290	121 EAST BIRCH LLC
R0042529	10119004	8,830	149	CRAVEN ENTERPRISES L L C
R0042530	10119005	190,270	3,208	CRAVEN ENTERPRISES L L C
R0064326	10119012	334,521	5,641	VANLANDINGHAM PROPERTIES LLC
R0064327	10119013	459,105	7,741	AWD II LTD
R0027573	10121007	78,673	1,327	STILLEY PROPERTIES LLC
R0027574	10121008	20,356	343	COAST & MOUNTAIN PROPERTIES
R0027575	10121009	94,148	1,588	COAST & MOUNTAIN PROPERTIES
R0027576	10121010	39,826	672	WONG FAMILY TRUST U/A DTD 7/1/10
R0027577	10121011	24,244	409	BARNETT P & M TRUST DTD 11-13-08
R0016235	10121012	62,200	1,049	COAST & MOUNTAIN PROPERTIES
R0017152	10121017	28,204	476	TANN SANDRA
R0017153	10121018	17,195	290	POUENMUANG ARIN & CHENNAPHA
R0017154	10121019	38,231	645	MCCORMICK DAVID L & PATRICIA E
R0017155	10121020	87,750	1,480	MCCORMICK DAVID L & PATRICIA E
R0027699	10121022	8,045	136	STILLEY PROPERTIES LLC
R0033992	10138001	70,205	1,184	BABBITT FOUNDATION
R0033993	10138002	47,073	794	107 CORPORATION THE
R0033994	10138003	58,484	986	BABBITT FOUNDATION
R0053276	10010001C	312,828	5,275	VALLEY NATIONAL BANK ARIZONA NA NKA
R0030400	10019001A	107,902	1,819	LEVITAN FAMILY TRUST DTD 10-15-98
R0030401	10019001B	56,364	950	BABBITT JIM & HELENE RVCBL TRUST TDT 10/22/12
R0056732	10019004A	254,205	4,286	M2M2 INVESTMENTS LLC
R0012365	10019008A	74,842	1,262	DARK SKIES LLC
R0028355	10019011A	26,175	441	MTSE HOLDINGS 2016001 LLC, TREJO INVESTMENTS LLLP, VIEL GLUCK LIMITED PARTNERSHIP, BEN FATTO LIMITED PARTN
R0028357	10019013A	39,074	659	MTSE HOLDINGS 2016001 LLC, TREJO INVESTMENTS LLLP, VIEL GLUCK LIMITED PARTNERSHIP, BEN FATTO LIMITED PARTN
R0028358	10019014B	124,254	2,095	BIRCH STREET PROPERTIES L L C
R0061631	10020001A	32,251	544	L & D BUILDING LLC
R0061632	10020001B	20,166	340	TIRAKUL SUCHADA
R0061635	10020004A	100,732	1,699	PHX AV PROPERTIES LLC
R0061636	10020006A	39,717	670	RAMSEY'S PROPERTIES LLC
R0010379	10020019A	34,741	586	SCHEURING MARY L TRUSTEE ; SCHEURING ML RVCBL LVNG TRST DTD 8-12-04

R0010380	10020021A	92,384	1,558	LOLA'S KIDS LLC
R0046288	10021003A	66,590	1,123	BUS STATION LLC
R0043118	10044006A	13,554	229	ATCHISON TOPEKA & SANTA FE RY CO NKA ; BURLINGTON NORTHERN & SANTA FE RY CO
R0043119	10044006B	76,005	1,282	FLAGSTAFF CHAMBER OF COMMERCE
R0011650	10118003C	91,451	1,542	STILLEY PROPERTIES LLC
R0011655	10118008A	323,100	5,448	HERMAN & KINNE LLC
R0055571	10119001A	17,570	296	121 EAST BIRCH LLC
R0042527	10119003A	8,348	141	CRAVEN ENTERPRISES L L C
R0042528	10119003B	8,589	145	121 EAST BIRCH LLC
R0042531	10119006A	170,892	2,882	LIMBER PINE ENTERPRISES LLC
R0042532	10119007A	103,488	1,745	FLAGSTAFF LODGE NO 7 F & A MASONS
R0064323	10119008B	5,825	98	121 EAST BIRCH LLC
R0064324	10119008C	269,692	4,548	121 EAST BIRCH LLC
R0064325	10119009E	543,920	9,172	HOPI TRIBE ECONOMIC DEVELOPMENT CORP
R0016236	10121013A	106,661	1,799	COAST & MOUNTAIN PROPERTIES
R0016237	10121016A	20,471	345	PUCHTECTA REAL PROPERTIES LLC
R0016238	10121016B	25,829	436	FLAG RETAIL CENTER LLC
R0016239	10121016C	27,585	465	WESTBROOK FAMILY TRUST U/D/T DTD 2-24-2000
R0016240	10121016D	41,288	696	DA VINCI INVESTMENTS LLC
R0016241	10121016E	12,051	203	WESTBROOK FAMILY TRUST U/D/T DTD 2-24-2000
R0027698	10121021A	58,747	991	COAST & MOUNTAIN PROPERTIES
R0017236	10127002C	10,807	182	ATCHISON TOPEKA & SANTA FE RY CO NKA ; BURLINGTON NORTHERN & SANTA FE RY CO

85

7,822,348 131,900

20001 - FLAG DWTN REV DIST

Tax Year: 2016

Budget:

Factor 1.6862

Account Number	Parcel Number	Primary Net Assessed	Assessment Amount	Owner
R0011646	10117010D	1,526,954	25,747	COCONINO COUNTY
R0010075	10021009A	31,910	538	FLAGSTAFF CITY OF
R0010076	10021009B	11,113	187	FLAGSTAFF CITY OF
R0010077	10021011	17,623	297	FLAGSTAFF CITY OF
R0010383	10020025	106,140	1,790	FLAGSTAFF CITY OF
R0012502	10044003C	72,640	1,225	FLAGSTAFF CITY OF
R0017237	10127002D	45,942	775	FLAGSTAFF CITY OF
R0043116	10044004D	81,546	1,375	FLAGSTAFF CITY OF
R0043117	10044005A	145,810	2,459	FLAGSTAFF CITY OF
R0046287	10021001B	19,101	322	FLAGSTAFF CITY OF
R0061641	10020011A	12,099	204	FLAGSTAFF CITY OF
R0071306	10044004E	99,629	1,680	FLAGSTAFF CITY OF
12		2,170,507	36,599	