

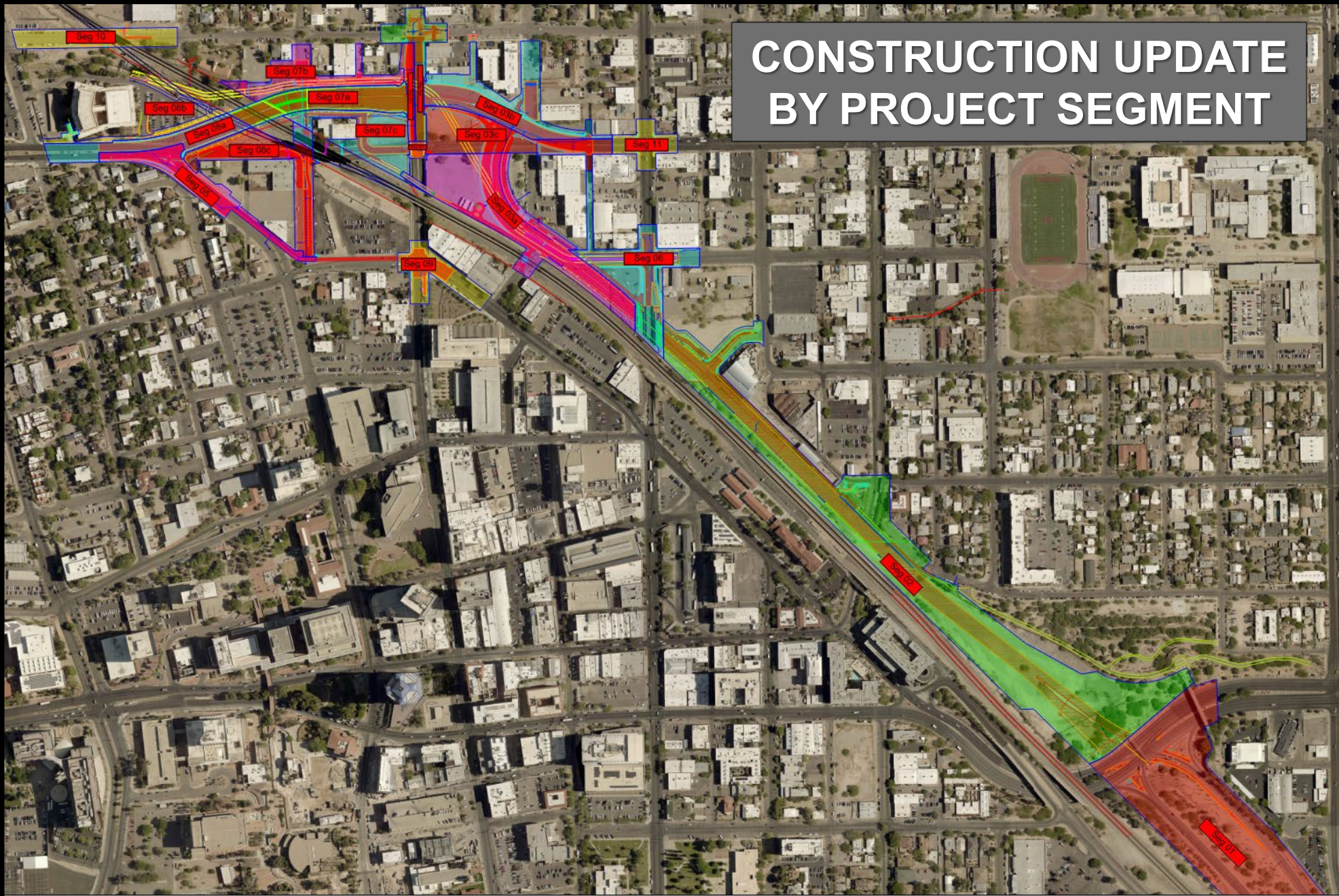


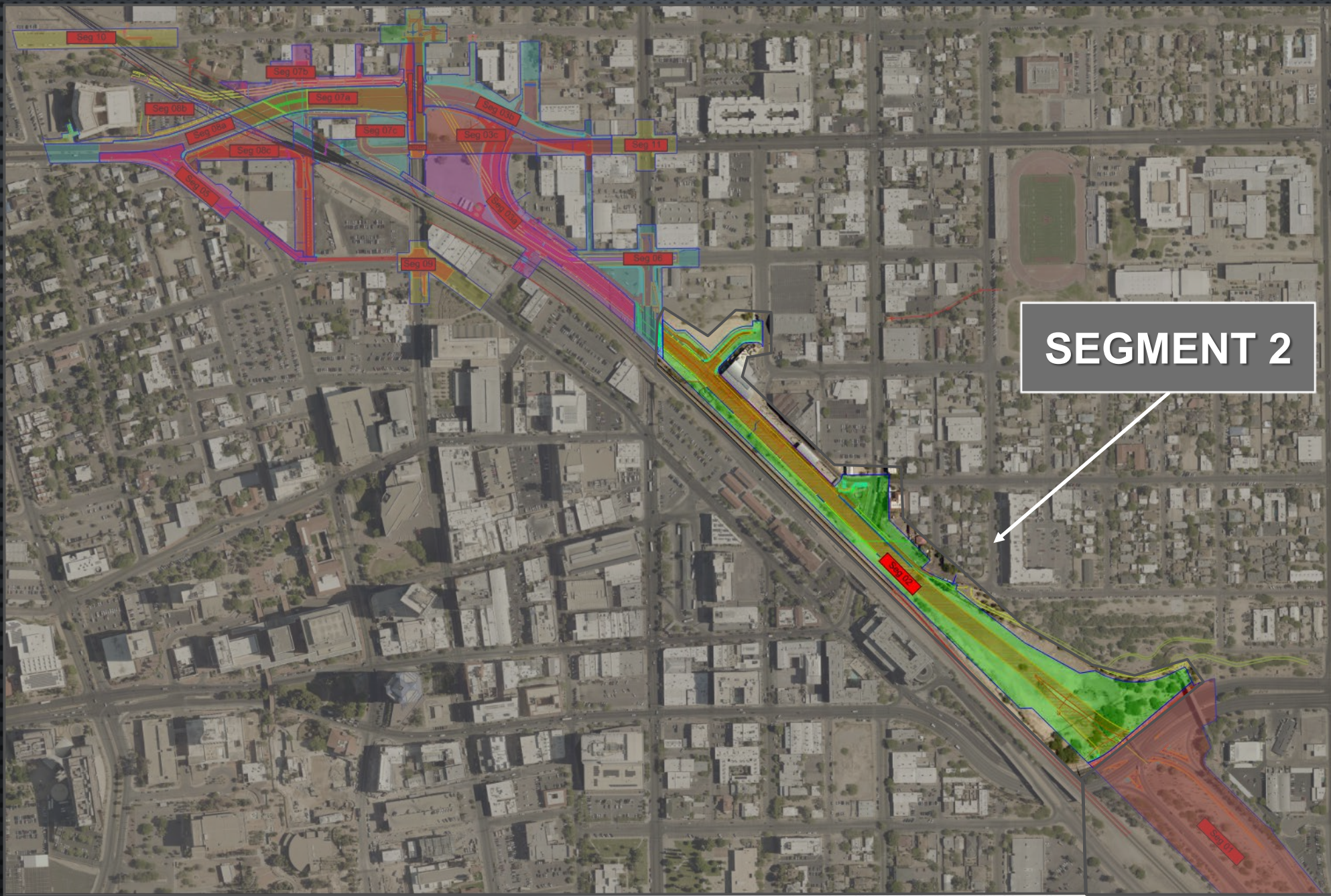
Downtown Links Phase III

Project Update – 3.11.2021



CONSTRUCTION UPDATE BY PROJECT SEGMENT





SEGMENT 2

CONSTRUCTION UPDATE BY PROJECT SEGMENT

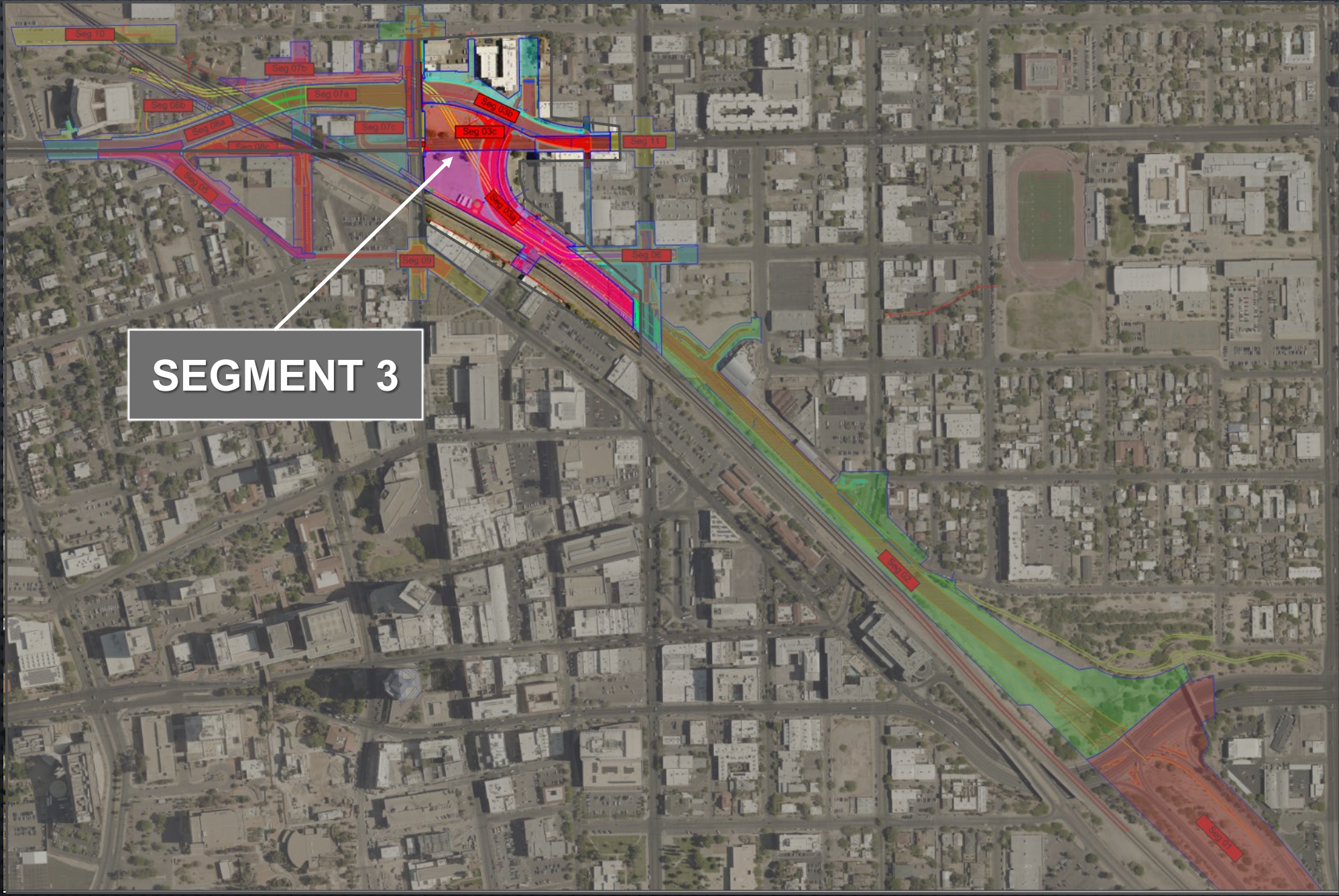


- **SEGMENT 2**
 - **MASS EXCAVATION IS COMPLETE**
 - **ALL STORM DRAIN HAS BEEN INSTALLED**

CONSTRUCTION UPDATE BY PROJECT SEGMENT



- **SEGMENT 2**
 - **MASS EXCAVATION IS COMPLETE**
 - **ALL STORM DRAIN HAS BEEN INSTALLED**
 - **RETAINING WALL CONSTRUCTION IS ON-GOING**



SEGMENT 3

CONSTRUCTION UPDATE BY PROJECT SEGMENT

- **SEGMENT 3**
 - **BOX CULVERT CONSTRUCTION**



CONSTRUCTION UPDATE BY PROJECT SEGMENT



- SEGMENT 3
- BOX CULVERT CONSTRUCTION

CONSTRUCTION UPDATE BY PROJECT SEGMENT

- SEGMENT 3

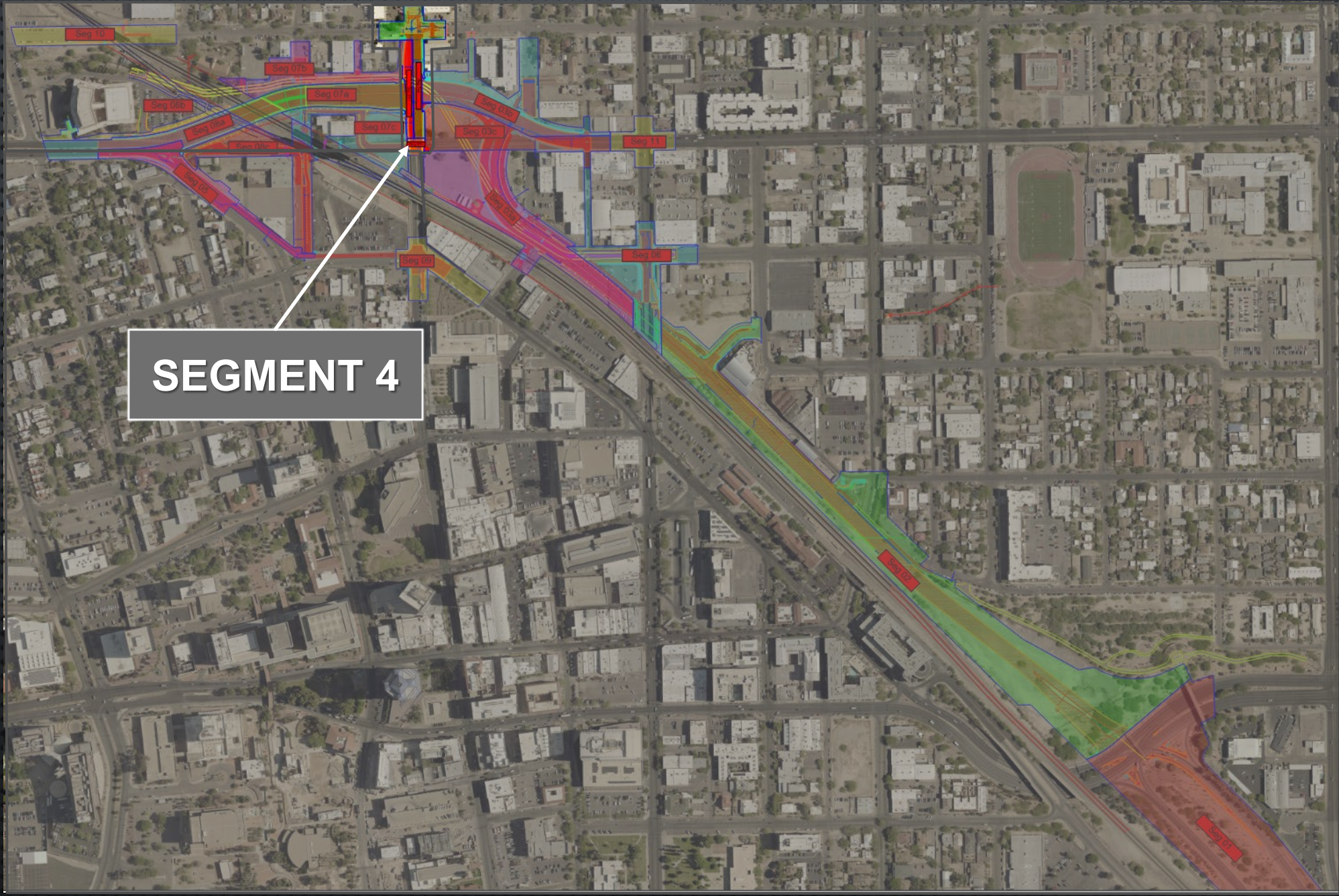
- 6TH ST BOX CULVERT CROSSING



CONSTRUCTION UPDATE BY PROJECT SEGMENT



- **SEGMENT 3**
 - **6TH ST BOX CULVERT CROSSING**
 - **6TH ST TO RE-OPEN ON FRIDAY, MAY 7TH**



SEGMENT 4

CONSTRUCTION UPDATE BY PROJECT SEGMENT

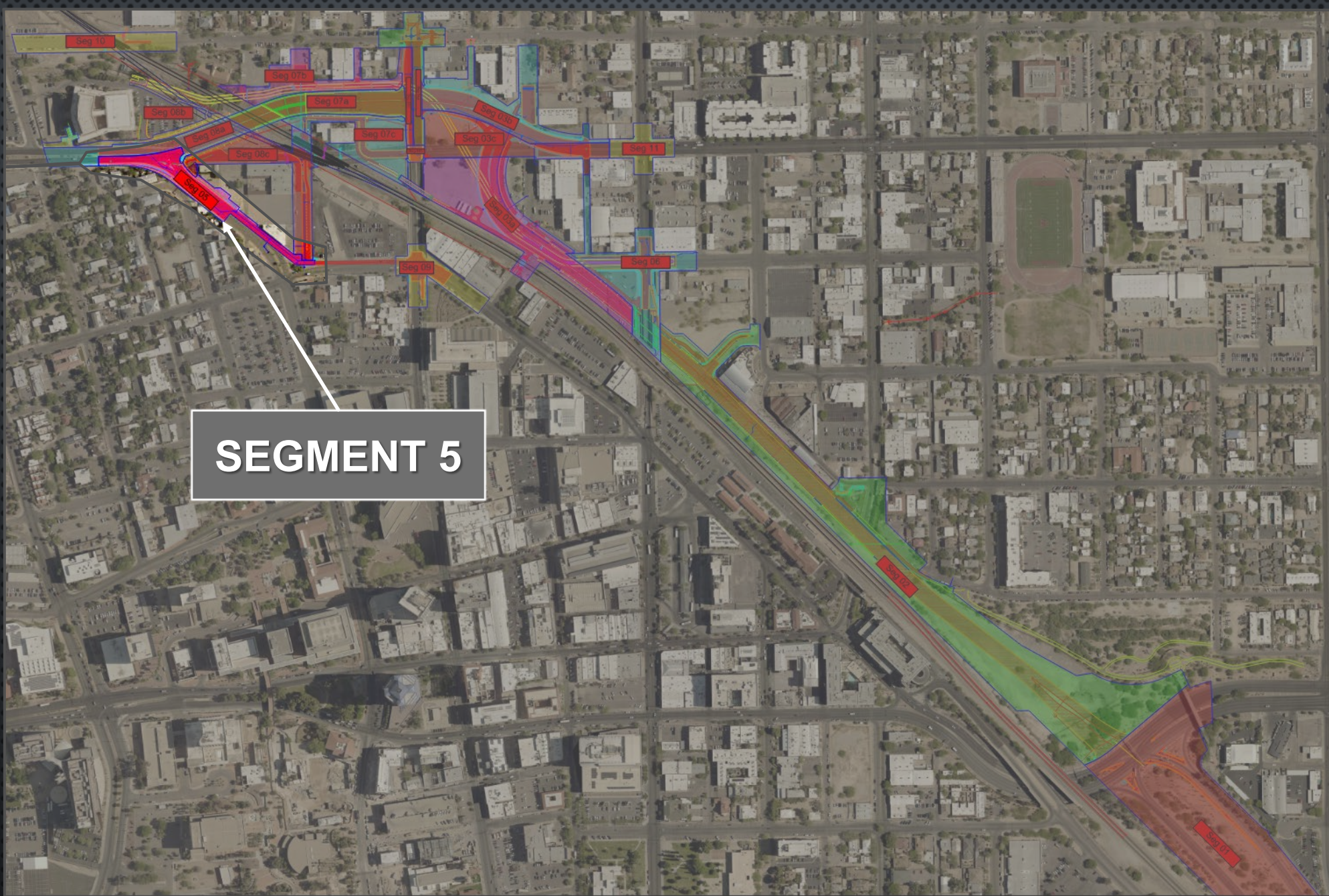


- **SEGMENT 4**
- **STONE AVE BOX
CULVERT CROSSING**

CONSTRUCTION UPDATE BY PROJECT SEGMENT



- **SEGMENT 4**
 - **STONE AVE BOX CULVERT CROSSING**
 - **EAST SIDE OF STONE AVE UNDER CONSTRUCTION NOW, SCHEDULED TO FINISH MAY, 21'**
 - **WEST SIDE TO START IMMEDIATELY AFTER AND FINISH IS AUGUST, 21'**



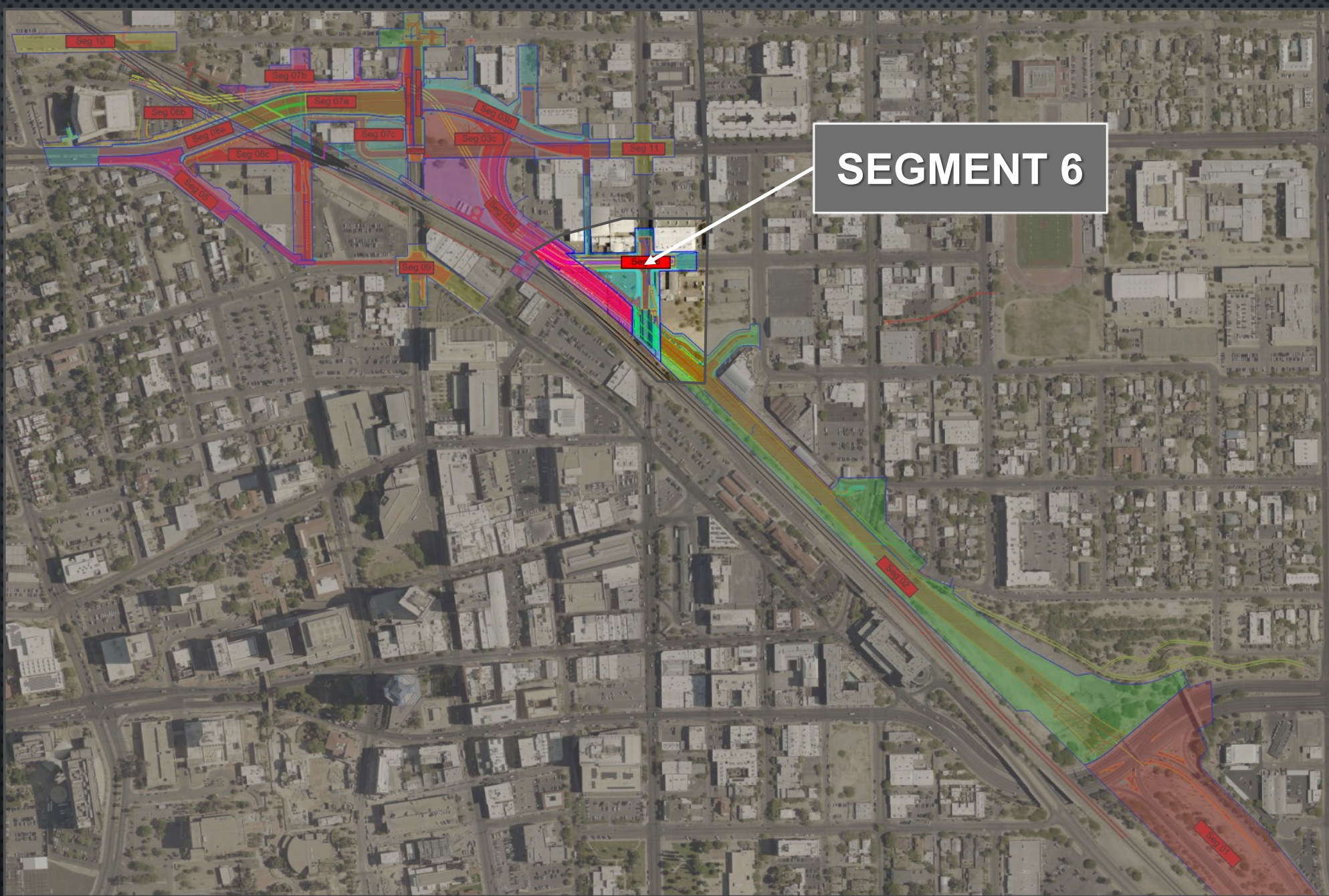
SEGMENT 5

CONSTRUCTION UPDATE BY PROJECT SEGMENT



■ SEGMENT 5

- MASS EXPORT IS COMPLETE
- STORM DRAIN INSTALL TO FINISH MID-MARCH
- SEWER & WATER TO BEGIN SHORTLY AFTER FOLLOWED BY RETAINING WALLS
- CHURCH SCHEDULE TO RE-OPEN SUMMER, 21'



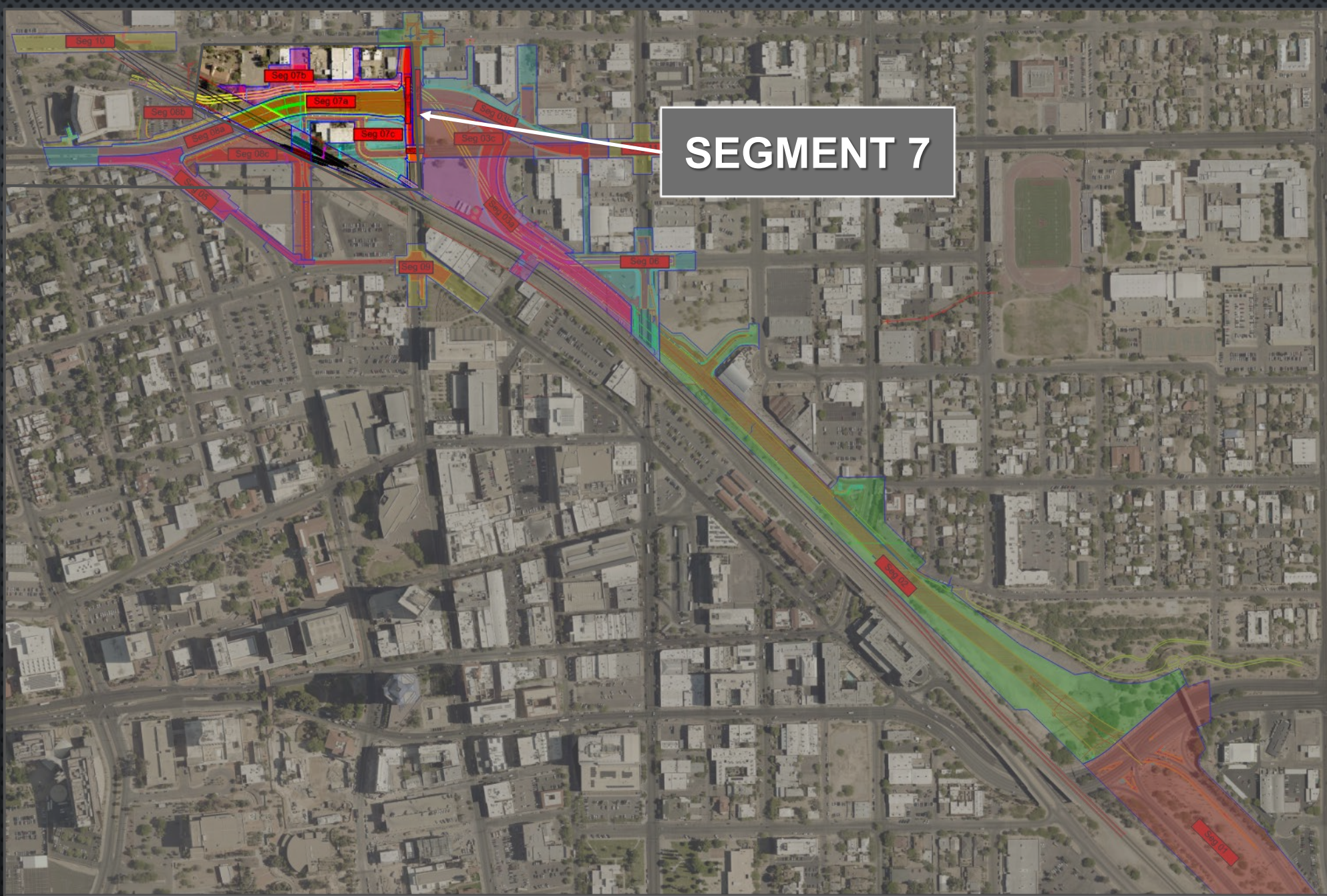
SEGMENT 6

CONSTRUCTION UPDATE BY PROJECT SEGMENT



■ SEGMENT 6

- SEWER INSTALL COMPLETE, WAITING ON APPROVAL FROM ADEQ
- BOX CULVERT CONSTRUCTION TO CONTINUE AFTER SEWER BYPASS IS REMOVED
- 6TH AVE & 7TH ST INTERSECTION CLOSURE SCHEDULE FOR SUMMER 21' THROUGH EARLY 22'
- INTERSECTION WORK
- 6TH AVE OVERPASS CONSTRUCTION



SEGMENT 7

CONSTRUCTION UPDATE BY PROJECT SEGMENT

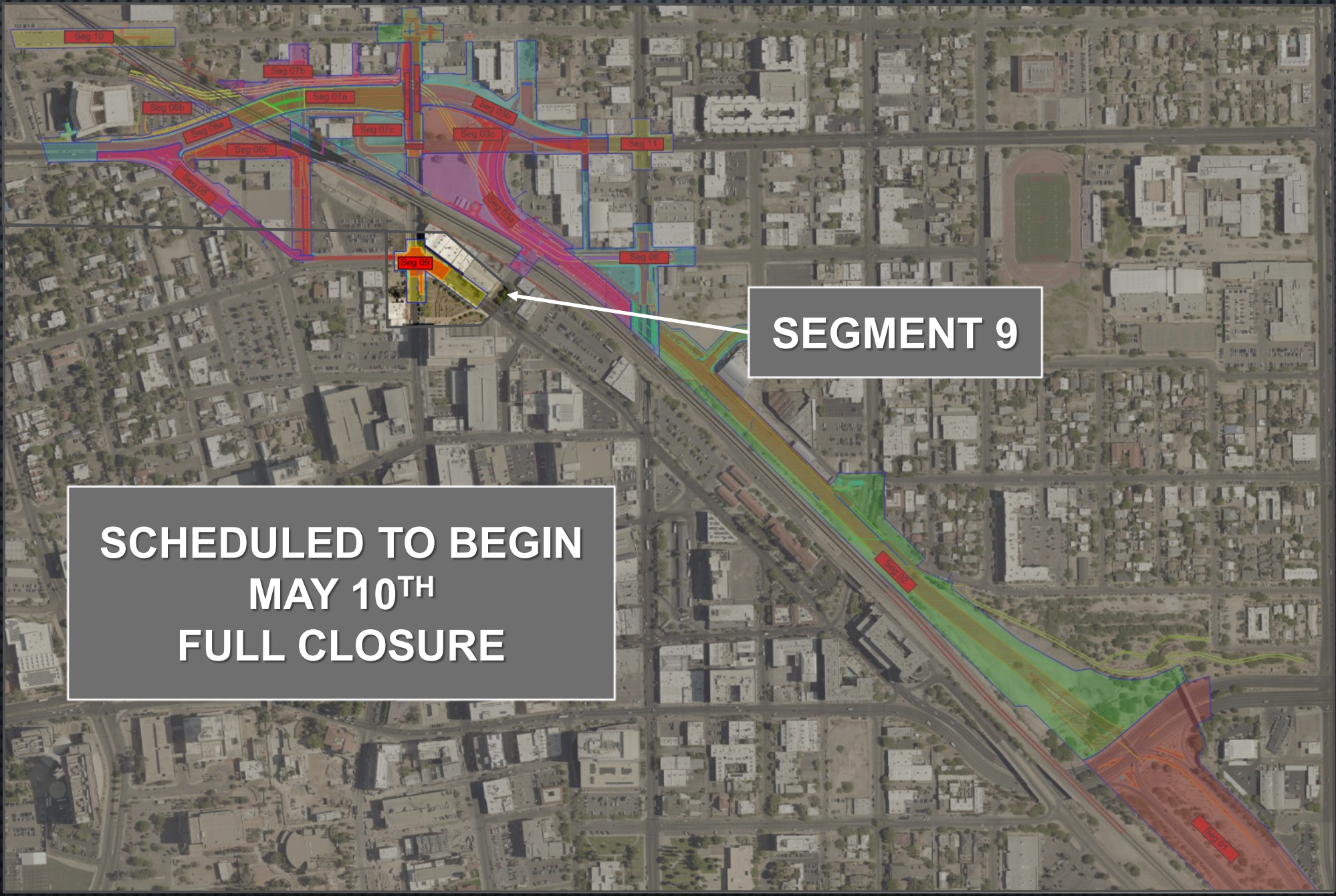


- **SEGMENT 7**
- **RETAINING WALL & BOX CULVERT CONSTRUCTION TO CONTINUE THROUGH JUNE OF 21'**

CONSTRUCTION UPDATE BY PROJECT SEGMENT



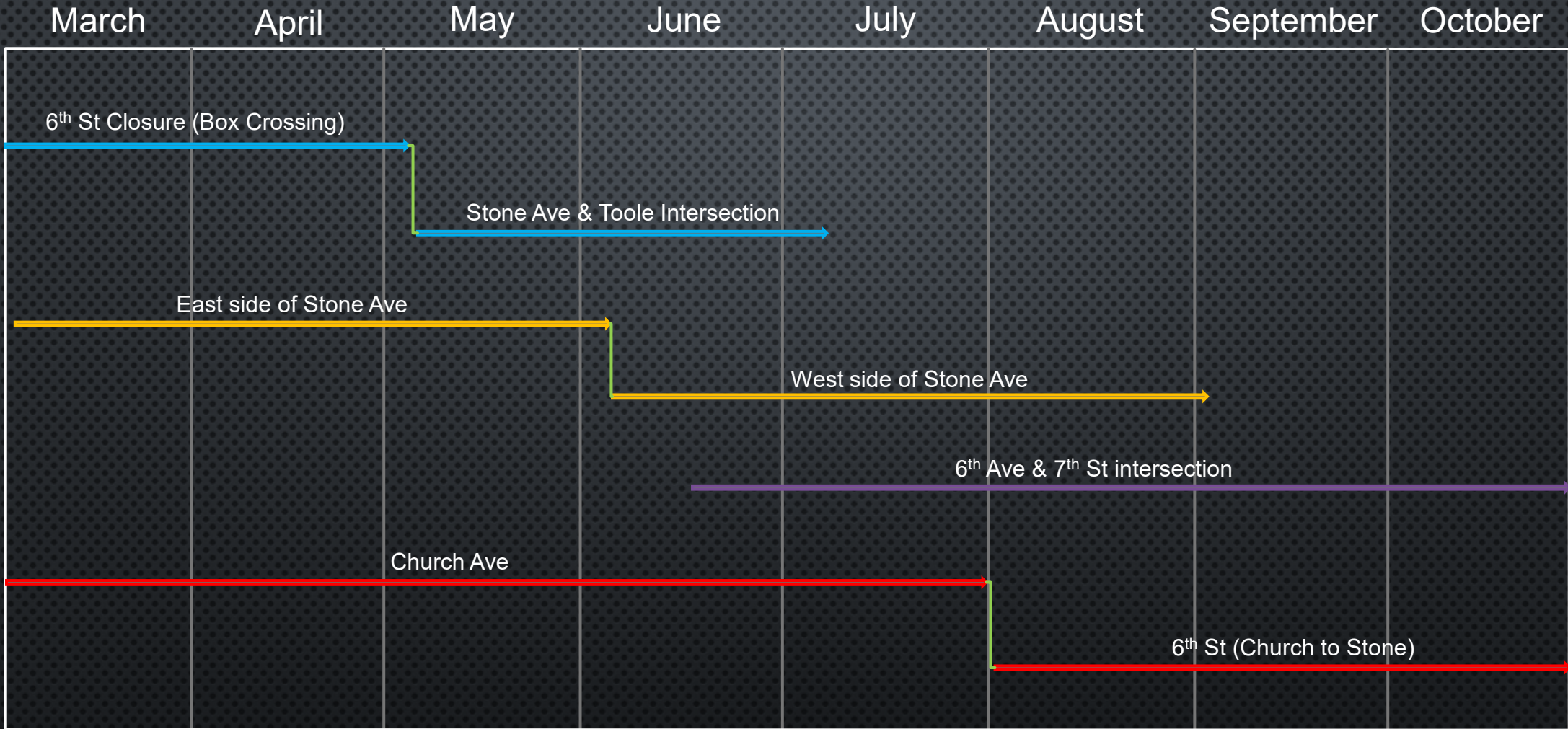
- **SEGMENT 7**
 - **RETAINING WALL & BOX CULVERT CONSTRUCTION TO CONTINUE THROUGH JUNE OF 21'**
 - **UNDERPASS CONSTRUCTION TO START LATER SUMMER 21' AFTER 6TH ST CLOSURE**



SEGMENT 9

**SCHEDULED TO BEGIN
MAY 10TH
FULL CLOSURE**

CURRENT AND UPCOMING ROAD CLOSURE SCHEDULE



SUBJECT TO CHANGE

QUESTIONS

