

DOWNTOWN BUILDING ILLUMINATION PROGRAM



- WHO** Downtown Property Owners/Managers
- WHAT** Line the top of your building with quality commercial grade light line from Christmas Light Decorators including warm white LED lighting and clips (required).
- WHEN** Purchase light line materials as soon as possible to allow for delivery. Purchase new light line before November 4. Install light line and have operable by **Friday, November 24**.
- WHERE** We encourage all downtown properties to participate.
- WHY** This program will promote vibrancy and unity within downtown and attract people from all over the region to dine, shop, stay, and explore our downtown for the holidays.
- HOW** Call or email Maralyn of Christmas Light Decorators for a free quote.

Quote: Maralyn Farrelly
(480) 967-1122
maralyn@cldaz.com

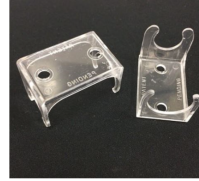


Contact Zach Baker
with questions
(520) 268-9034

DOWNTOWN BUILDING ILLUMINATION PROGRAM

PRODUCT

- C9- Warm White 120V SMD LED Plastic Smooth Bulb
- C9- Light String, 15" Spacing Green Wire
- C-Clips (use C9 side)



PURCHASING/INSTALL STEPS

- Receive a FREE quote from Christmas Light Decorators (they can give you an approximate measurement of your roof line from Google Earth).
- Purchase the products and have *the appropriate building staff install them. You can reuse them every year!
- Contact Zach at DTP for install instructions and videos.

*DTP has access to Christmas Light Decorators' simple training videos for your building maintenance staff.

PRICING

- Socket Light String, LED Bulbs, and Clips: **\$2.75 per foot**
- Replacement product pricing varies. Reach out to Maralyn of Christmas Light Decorators for replacement product.

OTHER ITEMS YOU NEED:

- Loctite PL-400 glue for clips (1 1oz tube per 100 ft of light line required) - Home Depot, Lowes, Ace Hardware
- Glue gun (standard 10oz caulking gun) - Home Depot, Lowes, Ace Hardware
- Extension cords, new electrical access to roof (Most roofs have existing access).
- Photoelectric Timer (turns lights auto-off/on) - Home Depot, Lowes, Ace

TURN ON LIGHTS BY NOVEMBER 24

Quote: Maralyn Farrelly
(480) 967-1122
maralyn@cldaz.com



Contact Zach Baker
with questions
(520) 268-9034

IF YOU PARTICIPATED LAST YEAR:

PREPARATION FOR THIS SEASON

Step 1: Locate and retrieve last year's product from storage.

Step 2: TEST your product (TEST before October 30, 2023)

- Plug your light line into power inside before putting on your roof.
- Check each bulb to make sure it is working.
- If bulbs are out, be sure to tighten in the socket. If the bulb does not turn on when tightened, you will need to replace the bulb.
- TEST your photoelectric timers to see if they are functioning (cover the sensor for up to 10 seconds to see if the timer illuminates a strand of lights)
- Check the clips you installed on your roof line to ensure they were not damaged and can still hold your light line in place.

Step 3: Order replacement product from CLD if needed:

- Box(es) of C9 Replacement Bulbs
- Bag(s) of replacement C-clips
- C9 Replacement light line

Step 4: Install your lights

- Install your light line into your clips from last year.
- **It is best that you slightly unscrew the bulb to fit into the clip rather than snap it in place (snapping into place could result in damaging the clip, bulb and/or socket).**
- Test light line after it is installed on roof and check/tighten or replace bulbs that are out.
- Plug in your timer and lights and turn them on when they are ready! Have them turned on by November 24.

TURN ON LIGHTS BY NOVEMBER 24

Quote: Maralyn Farrelly
(480) 967-1122
maralyn@cldaz.com



Contact Zach Baker
with questions
(520) 268-9034