

Equity in Public Space

Mitchell Silver, FAICP, Hon. ASLA

Email: Mitchell.silver@parks.nyc.gov

Twitter & Instagram: [@mitchell_silver](https://www.instagram.com/mitchell_silver)

Equity
Access
Inclusion

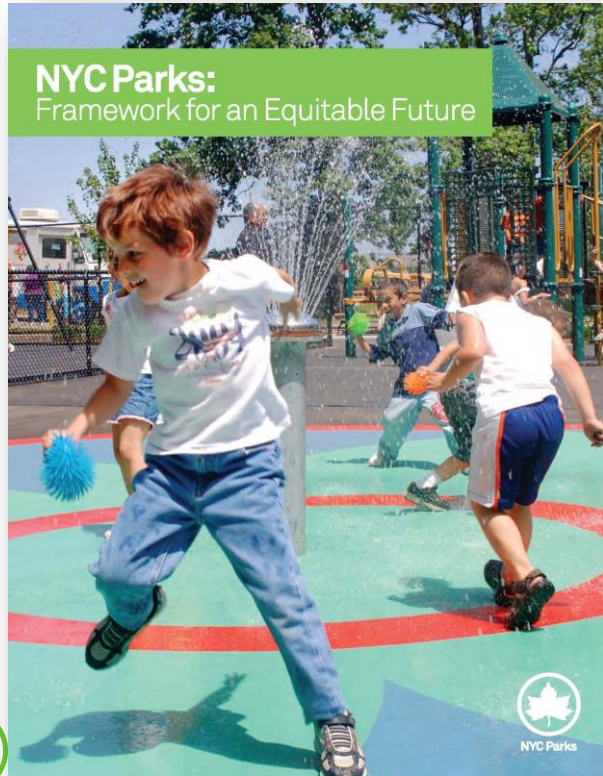




Equity

Equity = Fairness

Framework for an Equitable Future



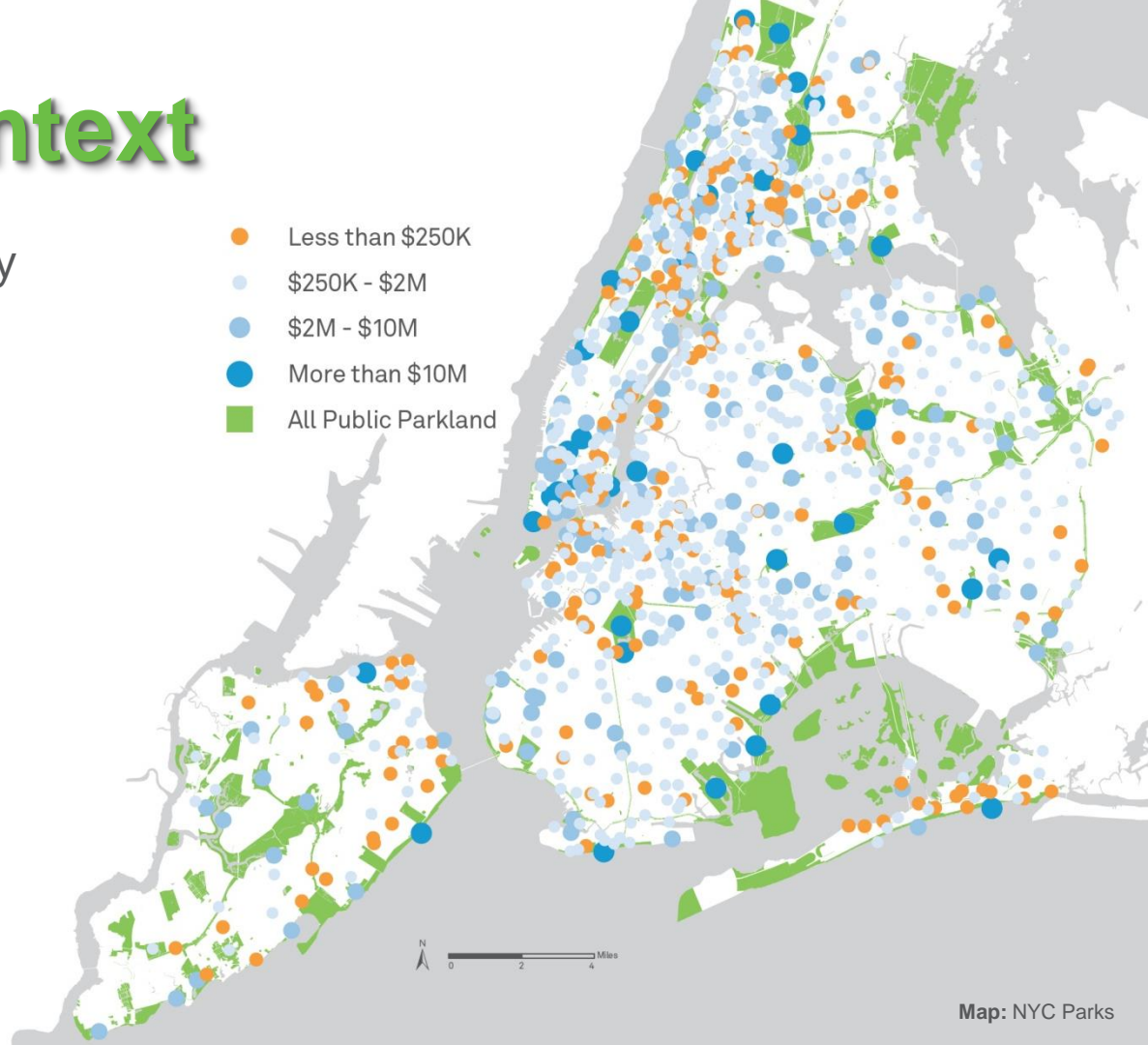
Capital in Context

- NYC Parks spent ~ **\$5.7 billion** on capital improvements over the past two decades
- **81.5%** New Yorkers live within a walk of a park
- Proximity vs. Quality



Equity in Context

- **215 parks** across the city received minimal capital investment - **less than \$250,000 over 20 years**





Community Parks Initiative
Recreate 67 parks

Garrison Park

The Bronx



Poor Access

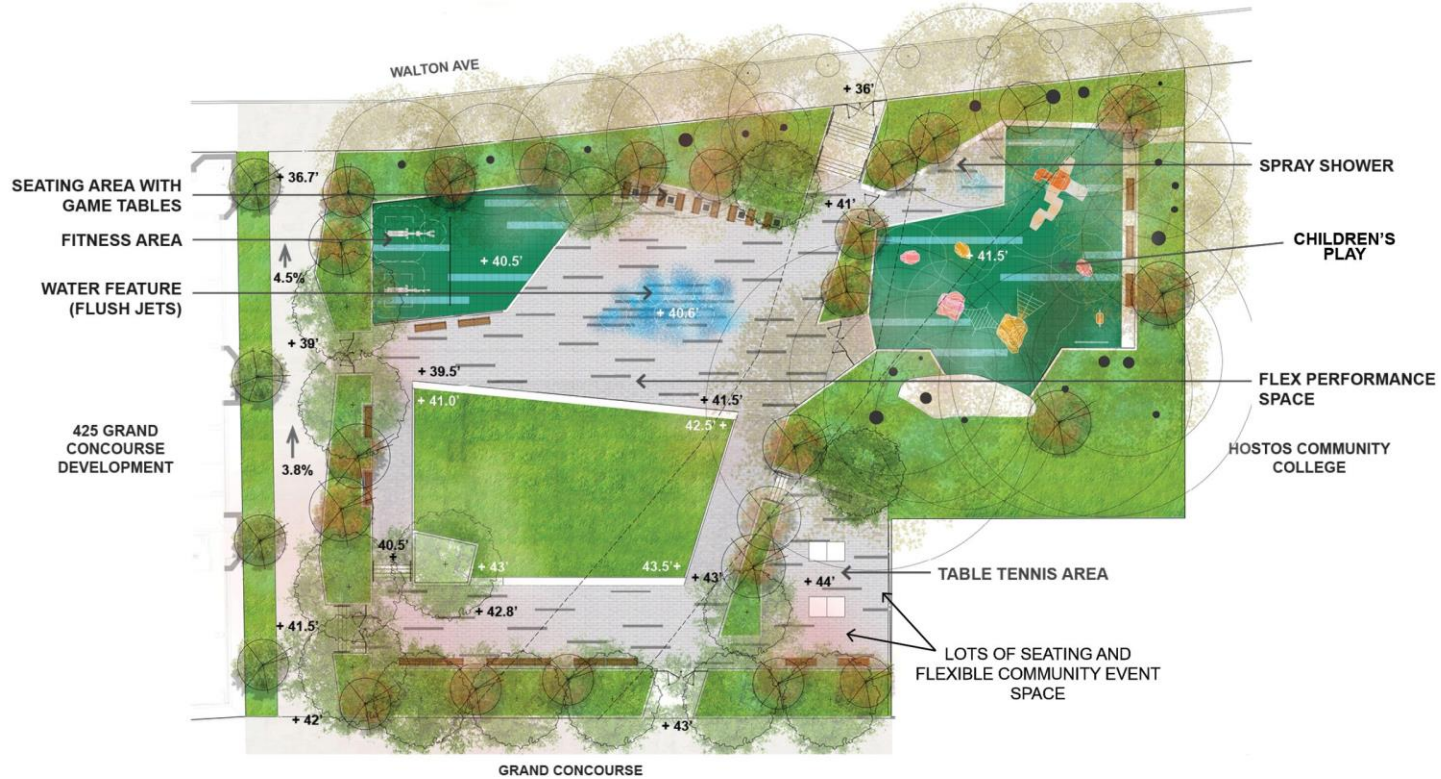


Existing Conditions



Garrison Park

Concept Plan



Multi-Generational Space



Garrison Park






Cool Pools NYC



Access



People may eat and sleep in their homes or apartments, but they live in the public realm.

What about the Public Realm?

Streets, sidewalks, bike lanes, parks, and public spaces are viewed as separate systems and managed by different agencies.

Parks	14%
Streets and sidewalks	26%
NYC Public Realm	40%



Photo: ny.curbed.com





Reimagine the public space



The sidewalk adjacent to the park
should be considered the outer park
- *Frederick Law Olmsted*

Rufus King Park, Queens



Guernsey St

DO NOT
ENTER
ALL
TRAFFIC
→

Father Jerry Popieluszko Square, Brooklyn

One New York

The Plan for a Strong and Just City



The City of New York
Mayor Bill de Blasio

Anthony Shorris
First Deputy Mayor

NYC

OneNYC calls for greater access to parks for all New Yorkers. **Parks Without Borders** is a key strategy to achieve this goal. **\$50 million** has been set aside to make it a reality.

Initiative 2

Improve open spaces through Parks Without Borders, a new strategy to enhance neighborhood access and connectivity



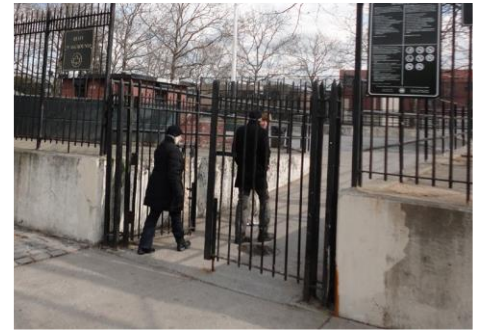
Father Demo Square

Parks Without Borders is a new effort to make our city's outdoor spaces more welcoming, accessible, and better connected to surrounding neighborhoods.

The quality of a city's outdoor space depends on an integrated system in which parks, sidewalks, pedestrian plazas, and other open spaces are connected to each other, improving access to neighborhood resources and promoting community interaction.

To make Parks Without Borders a reality, NYC Parks will take a new approach to park entrances and boundaries where they most directly interact with the surrounding community. NYC Parks will improve fences and gates and add other amenities, such as public art and landscaping, to make entrances more inviting. Along park boundaries, we

Parks Without Borders is a **new design approach** focusing on improving the areas where parks and neighborhoods meet: **entrances, edges, and park-adjacent spaces.**



Travers Park

Queens



Capturing Park-Adjacent Spaces



NYC Parks



+



+



=



Travers Park

Existing Edge Condition



Transforming the Edge



Travers Park

Existing Adjacent Space



Old Street Bed Transformed



Travers Park





Source: New York Times



Source: WCVB Boston



Source: Sercetnyc

Open Streets/Shared Streets/Play Streets



Inclusion

Inclusion

- To be included and not excluded
- **For all people** in design process
- **For all people** in community engagement
- Avoid designing **exclusive** parks and public spaces
- Make the space and place feel welcoming and safe for all



Loitering – to stand or wait around idly or without an apparent purpose – *Oxford Dictionary*

In 2017, NYC Parks removed **“loitering”** as a park rule as part of Criminal Justice Reform Act.



Arts in Parks

This booth was informed by the **“Yes Loitering” Project**.

A public space and safety youth initiative that sought:

- to **investigate how teens might be excluded from or targeted in public spaces** and
- develop ideas on **how to create more youth-powered spaces**.



Chat Travieso, *The Boogie Down (Youth) Booth*
June 1, 2019 to May 31, 2020
Keltch Park, Bronx





JUNETEENTH GROVE



NYC Parks





Equity in Public Space

Equity – Fairness

Access - Reimagine the public realm

Inclusion – Must be welcoming for all





Thank you