



## CALIFORNIA WATER SERVICE

Livermore District 195 South N Street  
Livermore, CA 94550 Tel: (925) 447-4900

April 11, 2023

Subject: Water Main Replacement Project – Second St. / S. K St. / S. J St.

Dear Customer:

California Water Service (Cal Water) is pleased to inform you of an upcoming water infrastructure upgrade that will improve water supply reliability and fire protection in the Livermore downtown area. The project includes installation of approximately 800 feet of new water main and the replacement of individual service lines from the new water mains to customers' water meters at the property line.

This project is scheduled to begin on April 17, 2023, and will take approximately 8-12 weeks to complete, weather permitting. The underground work will be performed by our contractor, West Valley Construction under the supervision of Cal Water's Construction Foreman, Noe Perez.

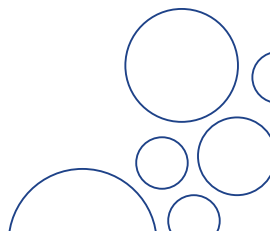
Work is scheduled to take place Monday through Thursday in two timeframes throughout the project. We will complete our noise generating work, which consists of potholing and saw-cutting, during the day between 7:00a.m. - 3:30p.m. and we will complete the digging and pipe installation at night between 9:00p.m. - 7:00a.m. The noise generating work during the day will cease during lunchtime between 11:00a.m. – 1:00p.m. Pedestrian access to businesses shall be maintained at all times.

Each area listed below will take place on different days to avoid significant impact to multiple streets on any one day. There may be times when no one will be working on the project during disinfection or an emergency. Please refer to the schedule provided to better understand the intermittent impact on the various areas. All dates and duration may be subject to change as required.

Construction and traffic disruption will take place in the following areas:

- 2000 block of Second St. - from K St. to L St.
- 2000 block of S. K St - from First St to Second St.
- 2100 block of S. K St. - from Second St. to Third St.
- 2000 block of S. J St. - from First St to Second St.

The parking of downtown patron vehicles will be a challenge throughout the project. We will display "No Parking" signs 72 hours in advance indicating the dates and times for vehicle relocation during construction. We will make every effort to minimize traffic delays and disruption





## CALIFORNIA WATER SERVICE

during the project by keeping the streets open to traffic whenever possible and avoiding the Thursday night farmer's market.

Minor disruptions in water service during construction will be necessary to connect the new water mains to the existing water mains. We will provide one to two days' notice whenever possible prior to any service interruption.

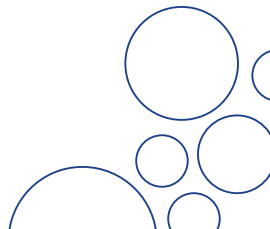
There will be significant trenching for this project to install facilities. Trenches will be filled daily and temporary asphalt applied for safety and traffic concerns. All sites shall be restored to safe condition for public use at the end of each work shift. Permanent paving of trenches will take place upon project completion.

If you have any questions or concerns regarding this project or would like any further information about this project, our contact information is below. Thank you in advance for your cooperation and patience.

Sincerely,

Rosemarie Guzman  
Construction Superintendent  
[rguzman@calwater.com](mailto:rguzman@calwater.com)

Sean Soulsby  
Construction Superintendent  
[ssoulsby@calwater.com](mailto:ssoulsby@calwater.com)



LIV 18-I Second St MRP

Proposed Schedule

Monday	Tuesday	Wednesday	Thursday	Friday
April 17	April 18	April 19	April 20	April 21
Day Work 9am-3:30pm				
Pothole J St mainline from First St to Second St	Sawcut mainline and Pothole service crossings on J St from First St to Second St	Pothole K St from First St to Second St	Pothole Second St from L St to K St; Sawcut K St from First St to Second St	Pothole Second St from L St to K St; Pothole K St from Second St to Third St
No Parking or vehicle access on J St; minimal traffic control on Second St to pothole tie in location only; maintain pedestrian access throughout	No Parking or vehicle access on J St; maintain pedestrian access throughout	No Parking or vehicle access on K St; minimal traffic control on Second St to pothole tie in location; maintain pedestrian access throughout	No Parking on Second St or K st, two way traffic on South side of second st; one way traffic northbound on K st	No Parking on Second St with two way traffic allowed on north side; No parking on West side of K St; one way vehicle access (northbound) with parking allowed on East side <b>OR</b> two way vehicle access with no parking allowed
Ref 1: South J St Daytime Road Closure	Ref 1: South J St Daytime Road Closure	Ref 2: South K St Daytime Road Closure (A)	Ref 3: South K St & Second St Daytime Road Closure (A)	Ref 4: South K St & Second St Daytime Road Closure (B)
April 24	April 25	April 26	April 27	April 28
Day Work 9am-3:30pm		Night Work 7pm-7am		
Sawcut Second St from L St to K St; Sawcut K St from Second St to Third St	Sawcut services on J st (7pm to 9pm) Mainline install on J St from 1st to 2nd	Mainline install on K St from Second St to Third St	Mainline install on K St from First St to Second St	
No parking on Second St, sawcut on North side of street with two way traffic on south side, then flip traffic and sawcut on South side of the street No parking on West side of K St; one way vehicle access (northbound) with parking allowed on East side OR two way vehicle access with no parking allowed		Pressure test & chlorinate J st from 1st to 2nd	Pressure test & chlorinate K st from 2nd to 3rd,	
May 1	May 2	May 3	May 4	May 5
Night Work 9pm-7am				
Service transfers on Second St from L St to K St	Service transfers on Second St from L St to K St, predig for retirement	Retirement on L St & 2nd (Detail A)	Service install on J St	
Pressure test & chlorinate on K from 1st to 2nd, flush & sample J st & K st		flush & sample K st from 1st to 2nd		
May 8	May 9	May 10	May 11	May 12
Night Work 9pm-7am				
Service install on J St	Service install on K St	Predig for Tie ins on 2nd & K	Tie ins on 2nd & K (details B & D)	
May 15	May 16	May 17	May 18	May 19
Night Work 9pm-7am				
Predig for Tie ins on 3rd & K	Tie ins on 3rd & K (details F & E)	Predig for tie ins on 1st	Tie ins on 1st (details C & G)	
May 22	May 23	May 24	May 25	May 26
Night Work 9pm-7am				
Predig for Tie in on 2nd & J	Tie in on 2nd & J (detail H) with Fire service reconnect			

1  
South J St  
Daytime Road Closure

Road Closure  
7am-3:30pm for potholing  
& sawcutting



Short term traffic control  
for potholing tie in pit  
only



2  
South K St  
Daytime Road Closure  
(A)

Road Closure  
7am-3:30pm for potholing



Short term traffic control  
for potholing tie in pits  
only



3  
South K St & Second St  
Daytime Road Closure (A)

Work Area 7am-3:30pm  
for sawcutting



Work Area 7am-3:30pm  
for potholing



4  
South K St & Second St  
Daytime Road Closure (B)

One way traffic w/  
parking OR two way  
traffic w/ no parking

two way traffic, no  
parking



Work Area 7am-3:30pm  
for potholing

Short term traffic control  
for potholing tie in pit  
only