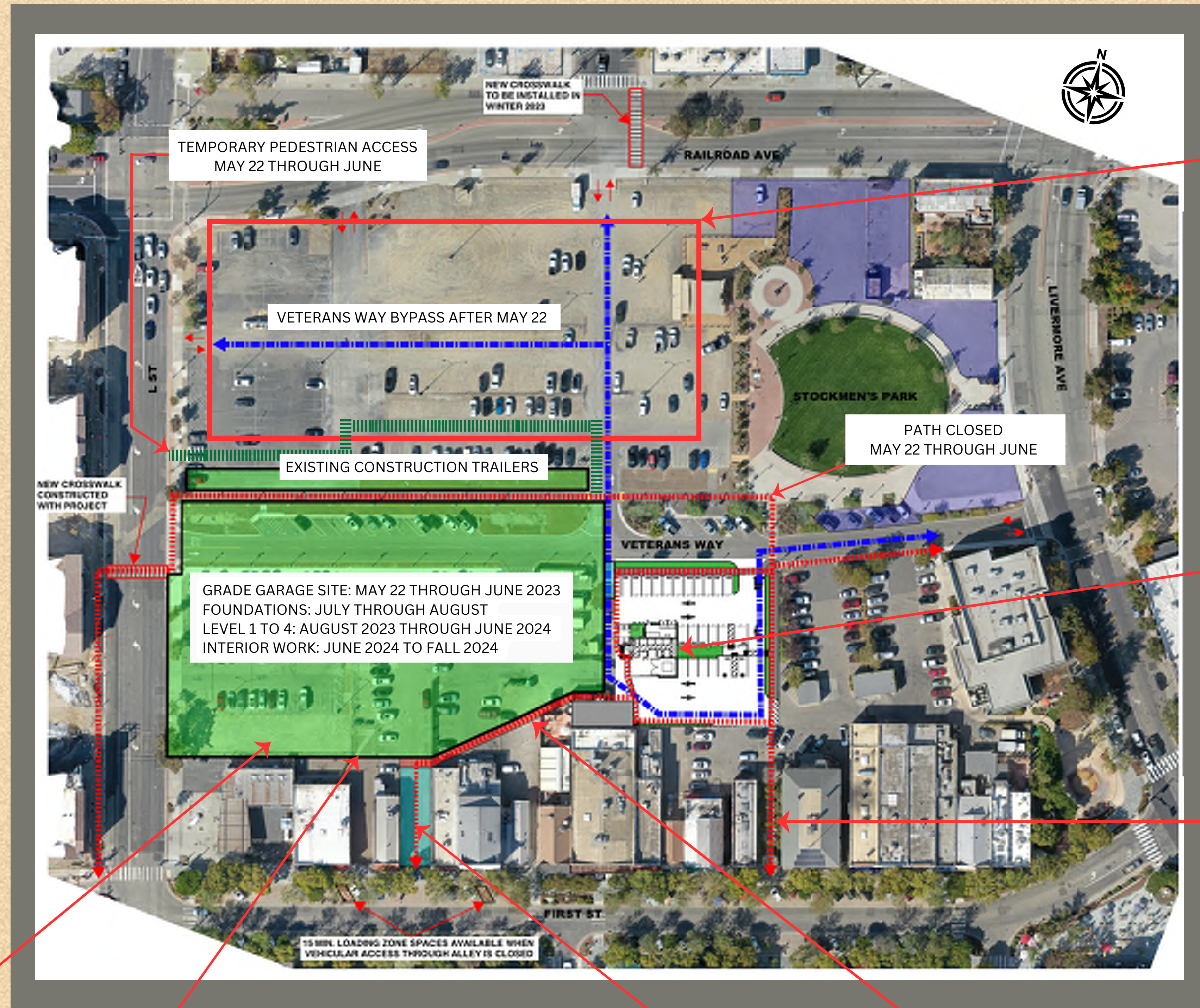


# Downtown Development Project Areas

(Public Parking Lot Behind First Street)

**LEGEND**

- L ST GARAGE CONSTRUCTION AREA**  
SPRING 2023 THROUGH FALL 2024  
115 PUBLIC PARKING SPACES CLOSED
- BLACKSMITH SQUARE CONSTRUCTION AREA**  
SUMMER 2023 TO FALL 2024  
18 PUBLIC PARKING SPACES CLOSED
- CRITICAL PEDESTRIAN ACCESS TO REMAIN OPEN DURING BUSINESS HOURS**  
10-DAY MAX. SHUTDOWN
- FINAL SURFACE IMPROVEMENTS**  
CLOSED SPRING/SUMMER 2024
- DELIVERY ACCESS**
- TEMPORARY PEDESTRIAN ACCESS**
- PEDESTRIAN ACCESS**
- ENTRY/EXIT POINT**



**NORTHSIDE IMPROVEMENTS:**  
APRIL 17 - MAY 24, 2023

**COMPLETE TRASH ENCLOSURE:**  
MAY 2023

**EXTEND PEDESTRIAN PATH:**  
SUMMER 2023

**SOUTH ACCESS ROAD OPEN:**  
SUMMER 2024

**TRASH ENCLOSURE, FENCE AND ARCH:**  
SUMMER 2023 TO WINTER 23/24

**CONSTRUCT PEDESTRIAN PATH:**  
SUMMER 2024

**CONSTRUCT SIDEWALK:**  
SUMMER 2023