

# Monthly Operations Report



March 2022

A large, abstract, colorful artwork with thick black outlines, resembling a stylized face or a complex geometric composition. It features various colors including blue, orange, yellow, green, and purple, with a textured, painterly appearance. The artwork is positioned on the right side of the page, partially overlapping the white text area.

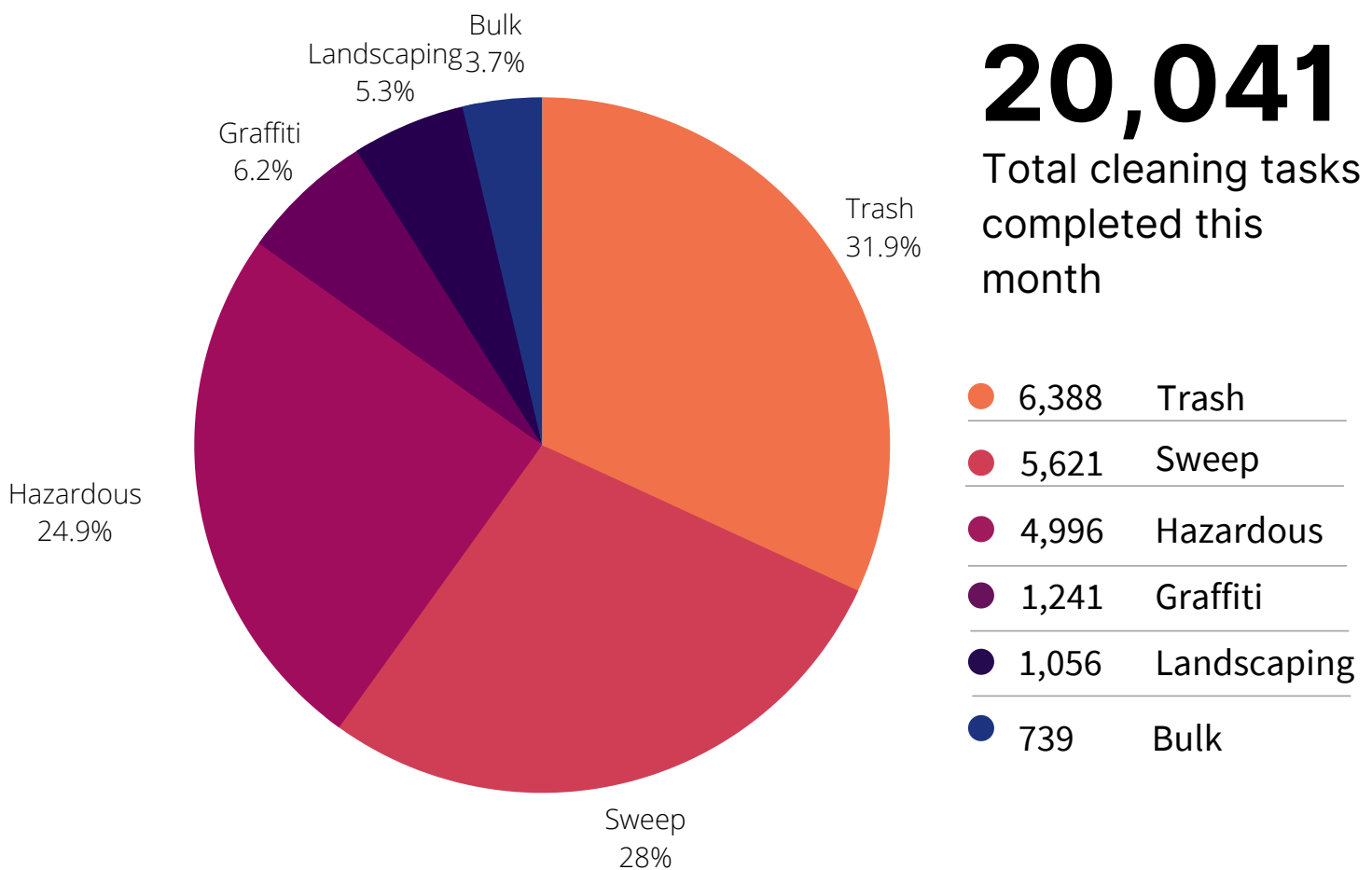
**Jia**



# 81,175

## Total pounds of garbage removed

March's trash haul represents a **+10%** change from February 2022.



On average, Sweeping Tasks were completed in 51 minutes and Trash Bags were filled and picked up in 105 minutes

## Employee of the Month - March 2022



### ★ GORDON ROWE

Our Employee of the Month for March was Gordon Rowe, who has been with SOMA West CBD since 2020. Gordon is primarily stationed in Zone 4, which covers the area between Bryant and Folsom and 8th and 10th, but covers other areas as needed. Gordon is known for his thoroughness in getting the job done, which has not gone unnoticed by our staff and the community members we serve. Recently, one of the local businesses that interact with Gordon regularly called our office to give feedback on how attentive he is and how much they appreciated his work. This was some of the strongest feedback we've received for one of our employees. Thank you for all of your hard work, Gordon!



### Monthly Task Map

- Sweep
- Trash
- Hazardous
- Graffiti
- Landscaping
- Bulk
- SF311 Outbound
- 911 Call
- Non-Emergency



District Sweeping



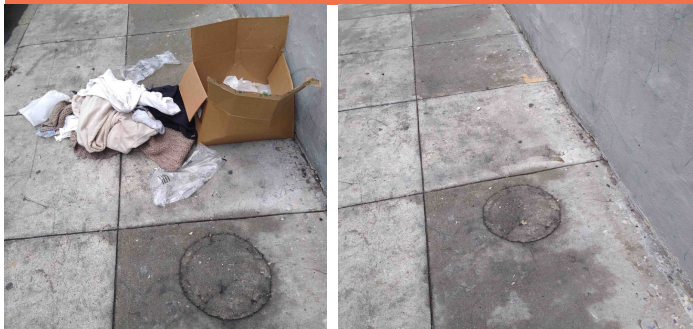
Bulk Collection



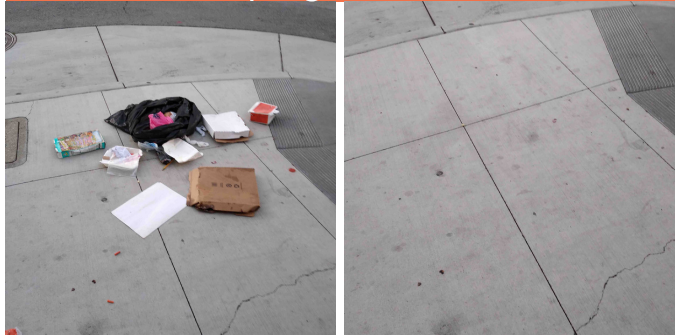
District Sweeping



Bulk Collection



District Sweeping



Bulk Collection



Graffiti



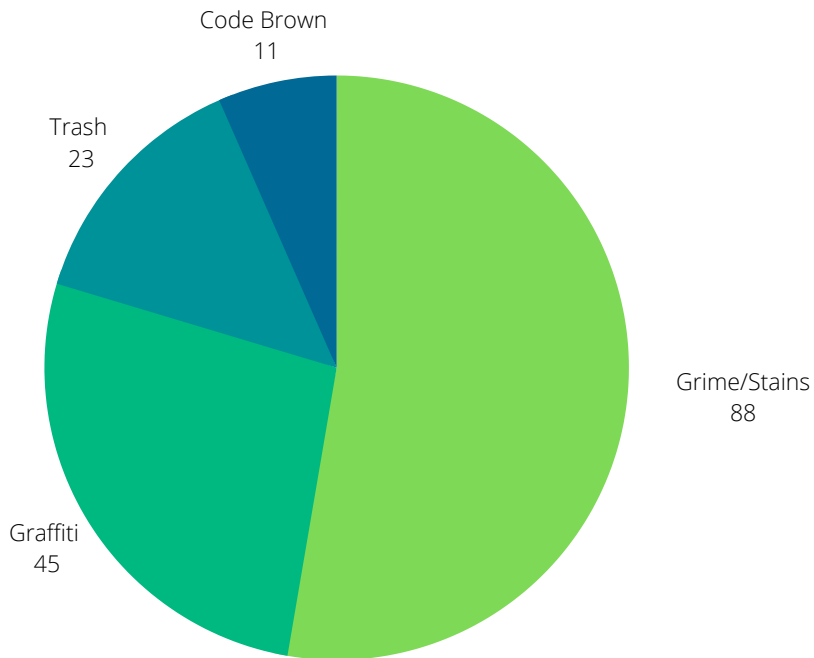
Landscaping





# 167

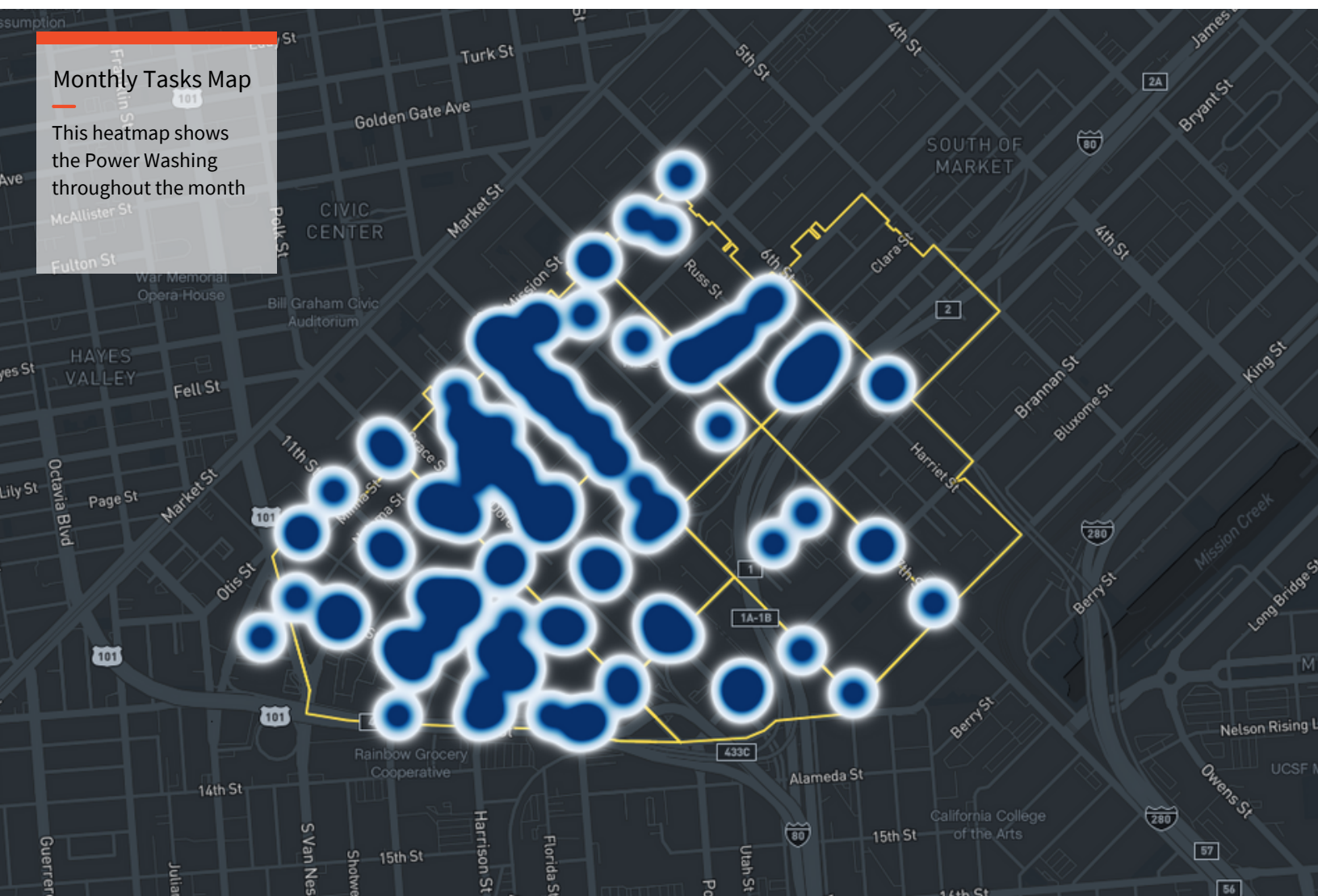
Total Power Washing  
Tasks completed



88	Grime / Stains
45	Graffiti
23	Trash
11	Code Brown

## Monthly Tasks Map

This heatmap shows the Power Washing throughout the month





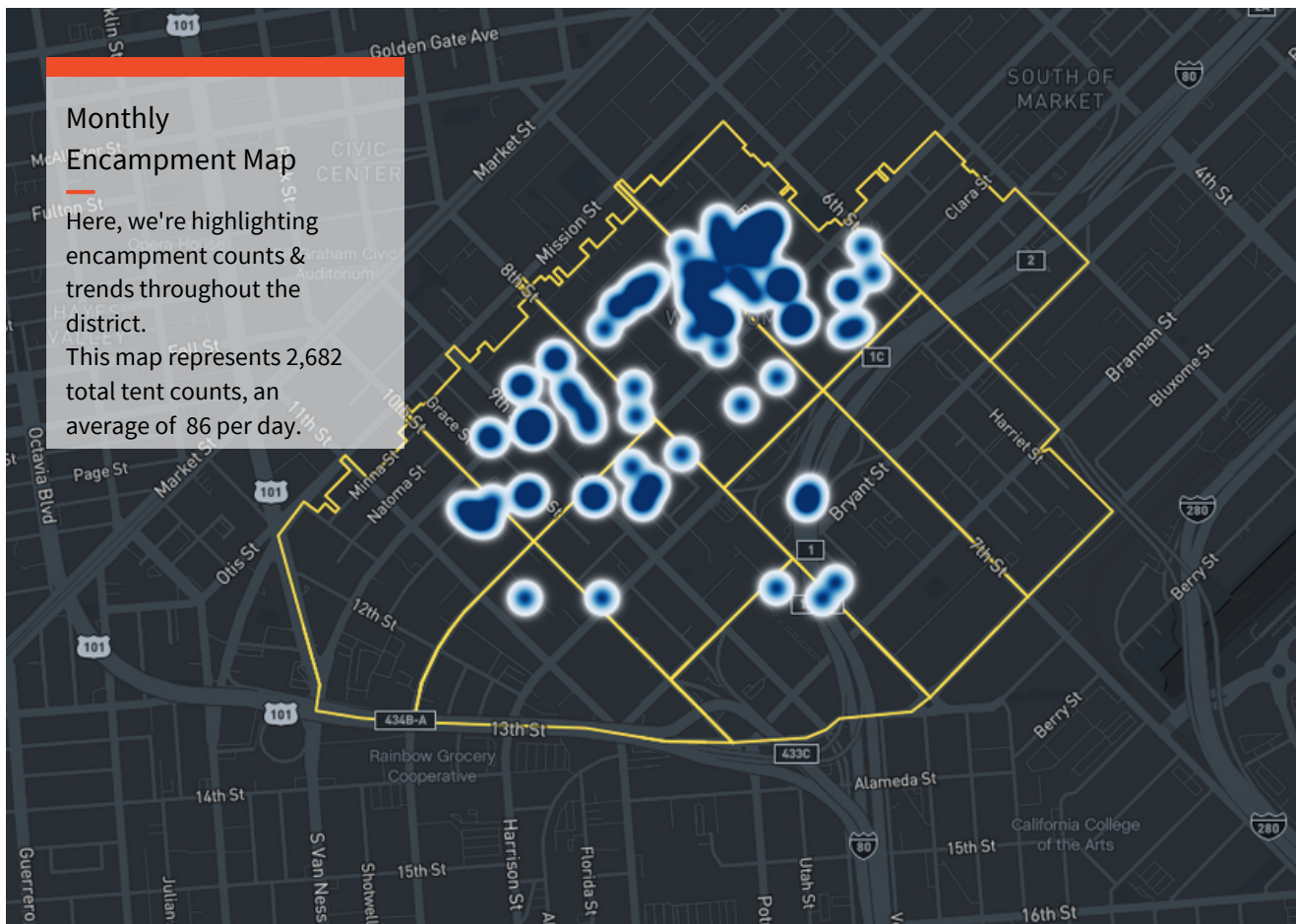
# 109

Total outreach  
cases addressed



## Monthly Encampment Map

Here, we're highlighting encampment counts and trends throughout the district.







**Powered by Jia**