

Monthly Operations Report



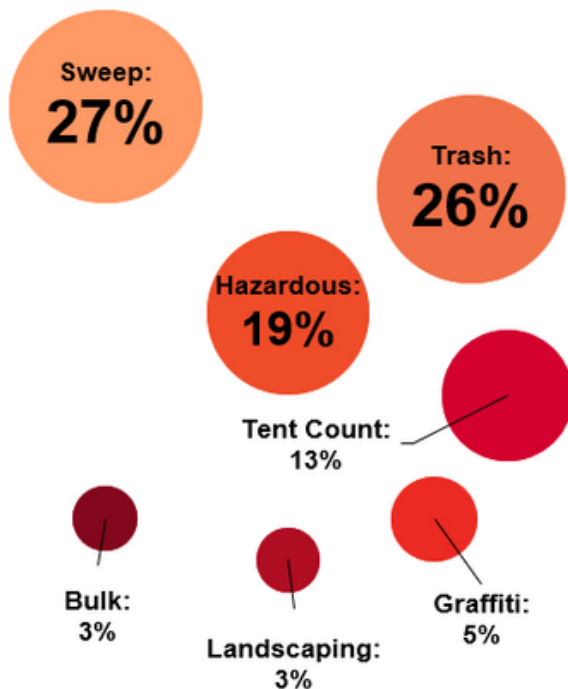
February 2022



73,600

Total pounds of garbage removed

February's trash haul represents a **-8.8%** change from January 2021.



19,903

Total cleaning tasks completed

5,519	Sweep:	26.9%
5,280	Trash:	25.7%
3,987	Hazardous:	19.4%
2,577	Tent Count:	12.5%
1,096	Graffiti:	5.3%
629	Bulk:	3.1%
618	Landscaping:	3.0%
197	Other	4.1%

On average, Sweeping Tasks were completed in 19 minutes and Trash Bags were filled and picked up in 70 minutes

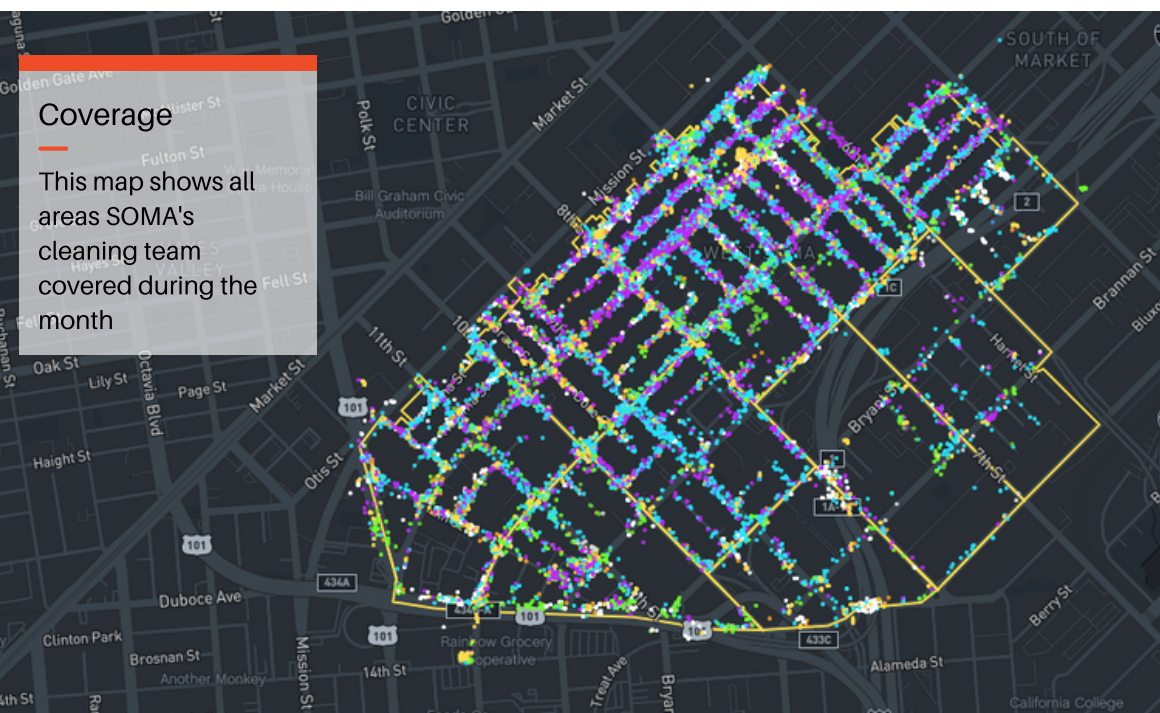
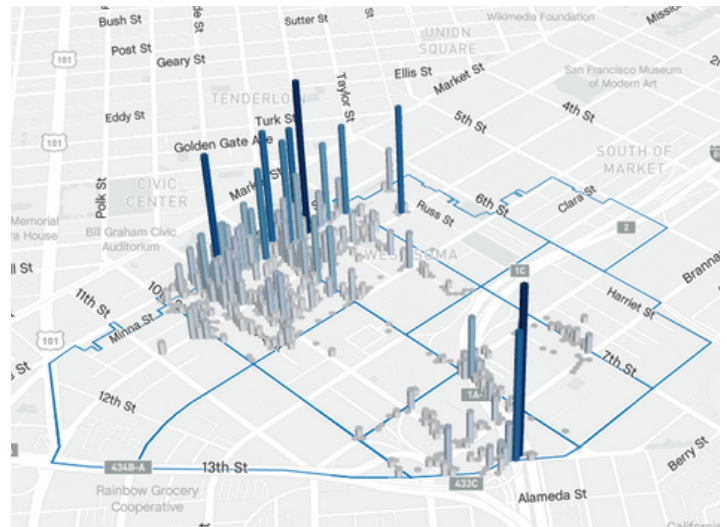
Employee of the Month - February 2022



★ Todd Lewis

Please join us in congratulating Todd Lewis, our Employee of the Month for February 2022! Todd is relatively new to SOMA West CBD, joining the team in late 2021. He joined us with glowing recommendations from his previous employer, and in his brief time in the neighborhood, he has done more than enough to prove those recommendations accurate!

Todd mainly covers Zone 3, bounded by 8th and 10th Streets and between Folsom and Mission Streets. This heavily trafficked part of the district sees a lot of action, but he always rises to the occasion. Todd is also often the first to volunteer in other areas when needed. Todd also happens to be expecting a baby any day now! We are so grateful to Todd for working hard to improve cleanliness and safety in SOMA West.



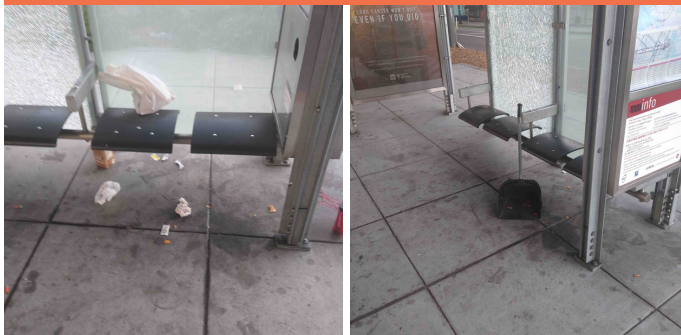
Monthly Task Map

Key

- Sweep
- Hazardous
- Graffiti
- Landscaping
- Bulk
- SF311 Outbound
- 911 Call
- Non-Emergency

Trash activity is excluded.

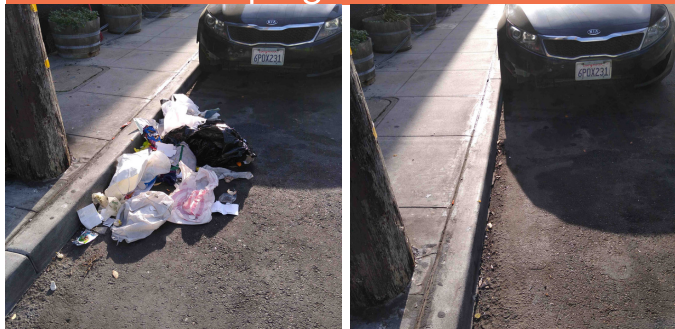
District Sweeping



Bulk Collection



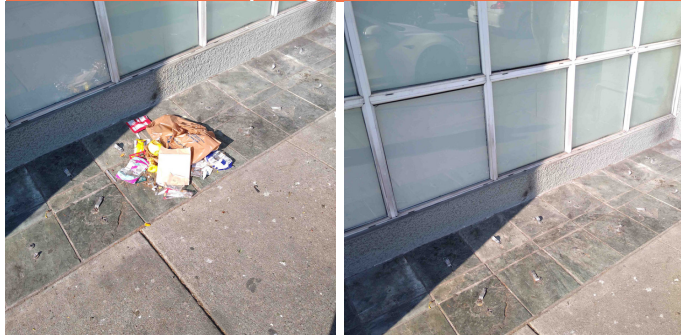
District Sweeping



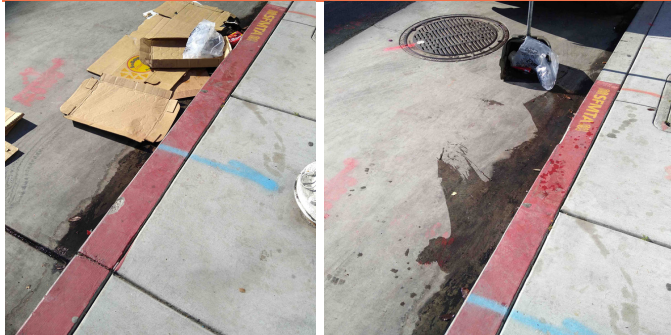
Bulk Collection



District Sweeping



Bulk Collection



Graffiti

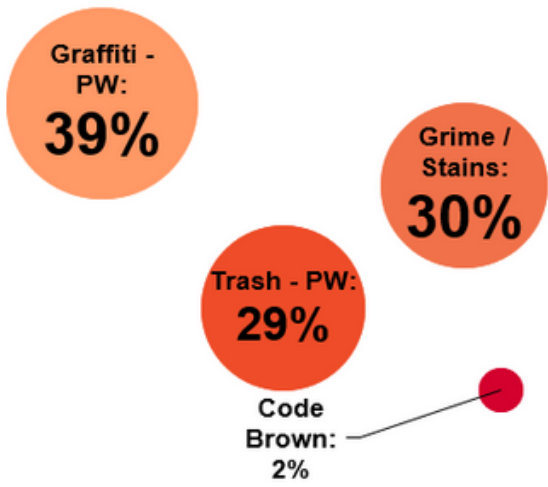


Landscaping



185

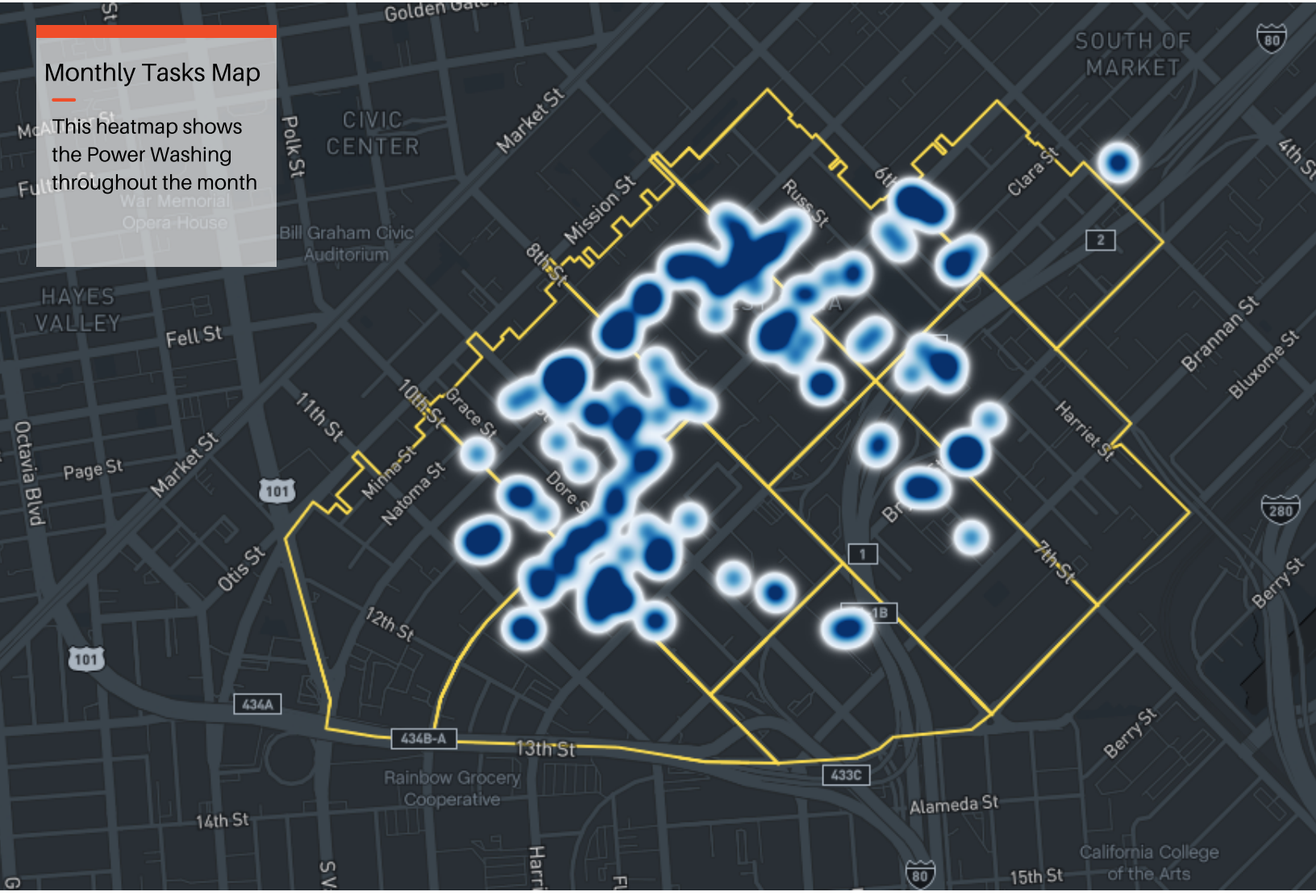
Total Power Washing
Tasks completed



72	Graffiti - PW	39%
55	Grime / Stains	30%
54	Trash - PW	29%
4	Code Brown	2%

Monthly Tasks Map

This heatmap shows the Power Washing throughout the month



99

Total outreach cases addressed



Monthly Encampment Map

Here, we're highlighting encampment counts and trends throughout the district.



