

Monthly Operations Report



November 2022

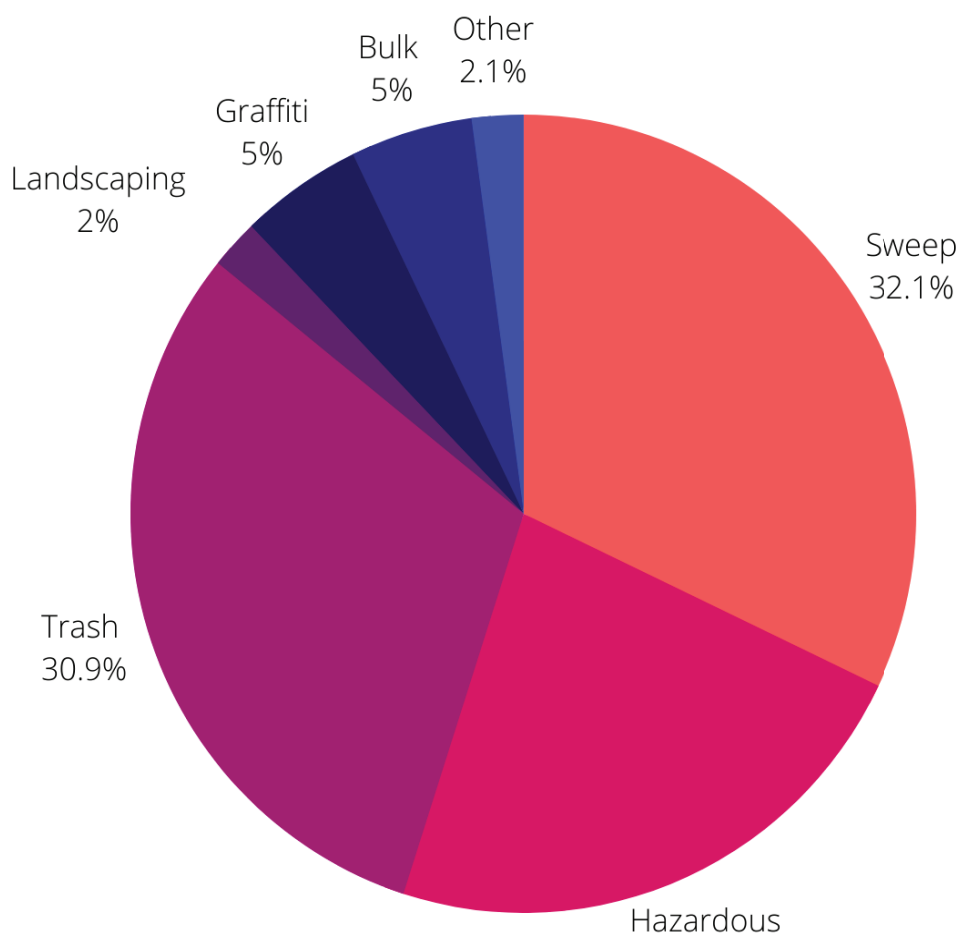
A decorative string of glowing flower-shaped lights hangs vertically against a dark background. The lights are in various colors, including blue, purple, and white, and are shaped like stylized flowers. They are strung along a thin, light-colored cord.

Jia

77,525

Total pounds of garbage removed

October's trash haul represents
a **-4%** change from October 2022



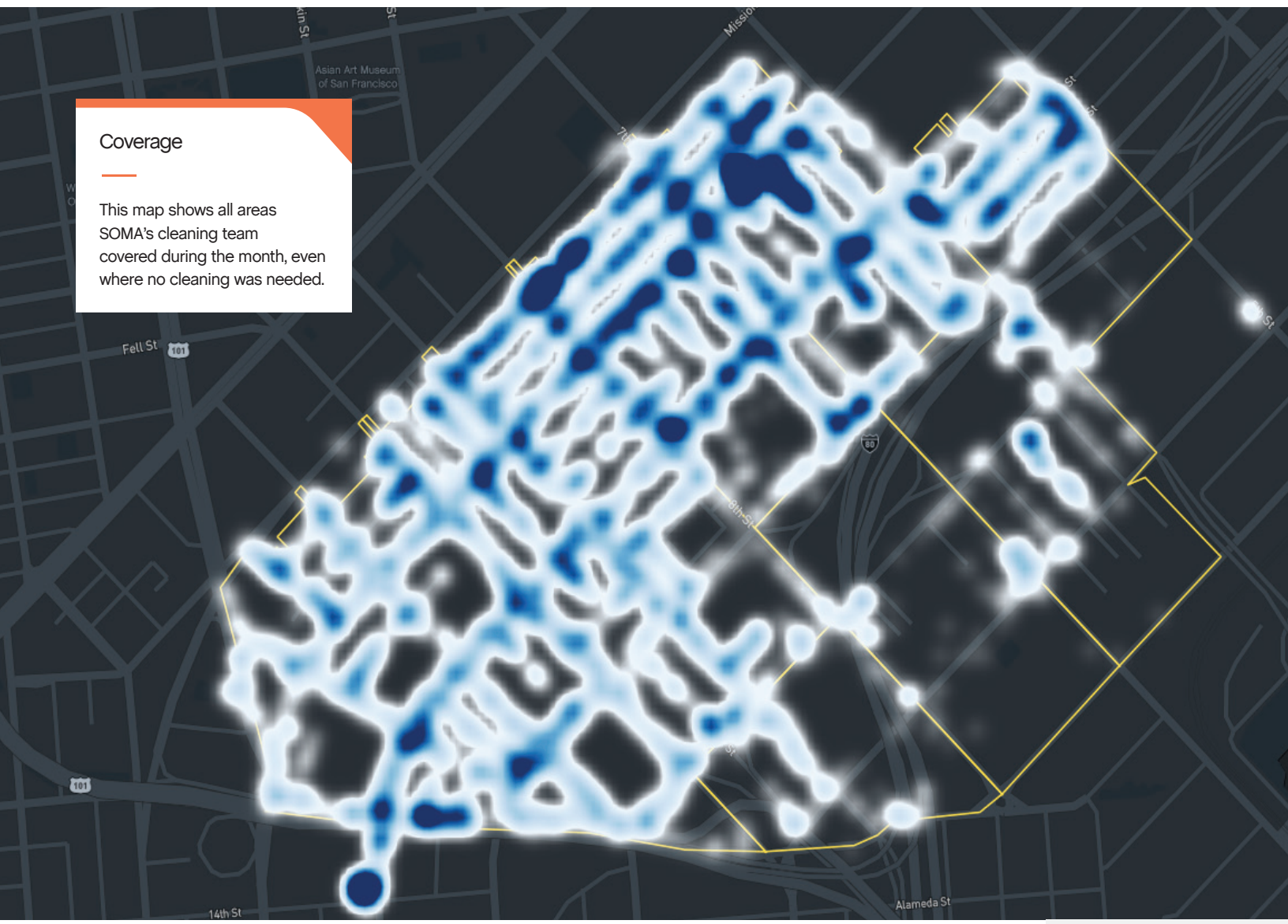
20,431

Total cleaning tasks completed

6,557 Sweeping Tasks	32%
4,669 Hazardous Tasks	22.8%
6,305 Trash Bag & Pickup Tasks	30.8%
409 Landscaping Tasks	2%
1,028 Graffiti Tasks	5%
1,026 Bulk Removal	5%
435 Other	2.1%
149 Big Belly	
57 SF 311 Outbound	
55 Dog Stations	
46 Non Emergency Calls	
49 Hanging Baskets	
21 Pressure Washer	
58 Pole Cleaning	
40 Street Sweeper	

Coverage

This map shows all areas SOMA's cleaning team covered during the month, even where no cleaning was needed.



© Mapbox © OpenStreetMap



Sources

99%+

of cleaning tasks were created by
SOMA West.

<1%

of tasks were inbound from SF311.

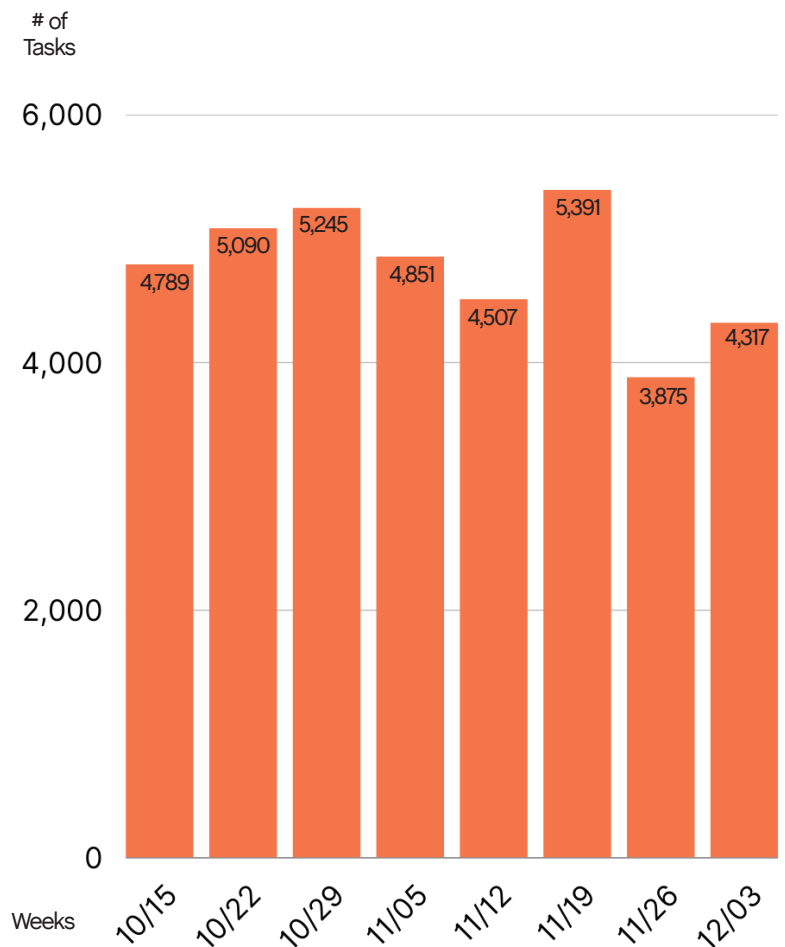
Trash activity is excluded.

Task Trends

Task activity

decreased by 4.5%

month-over-month from
October 2022



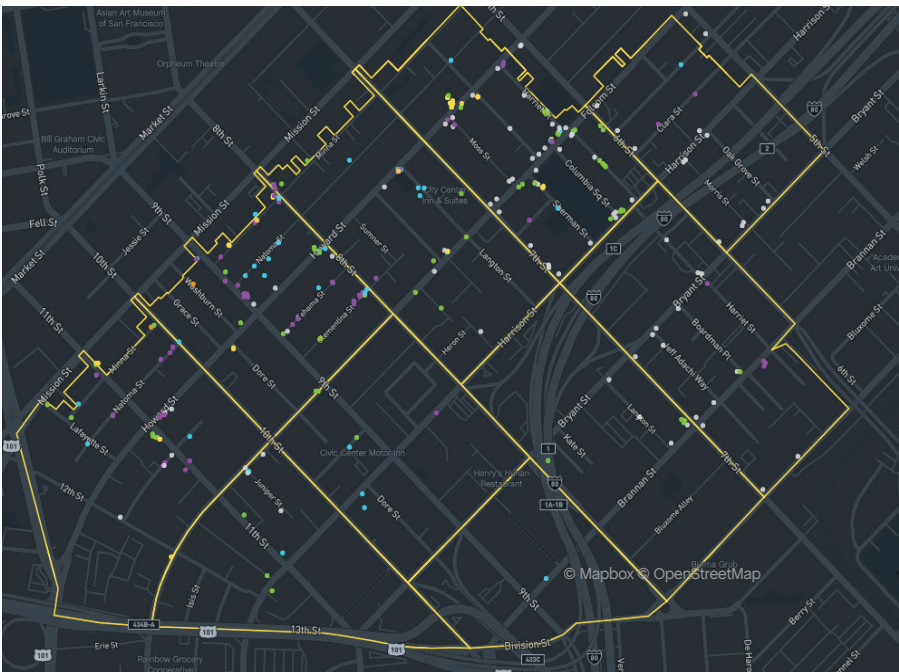
Employee of the Month



DeAndre Barney



November 2022's Employee of the month is DeAndre Barney! As you can see from his service map, DeAndre works all throughout the district doing the pressure washing. This is his second time receiving the Employee of the Month distinction. Deandre is consistently the first person in the office at 5AM and was promoted within his first year of employment. In November alone, four neighbors called us to express gratitude for DeAndre.



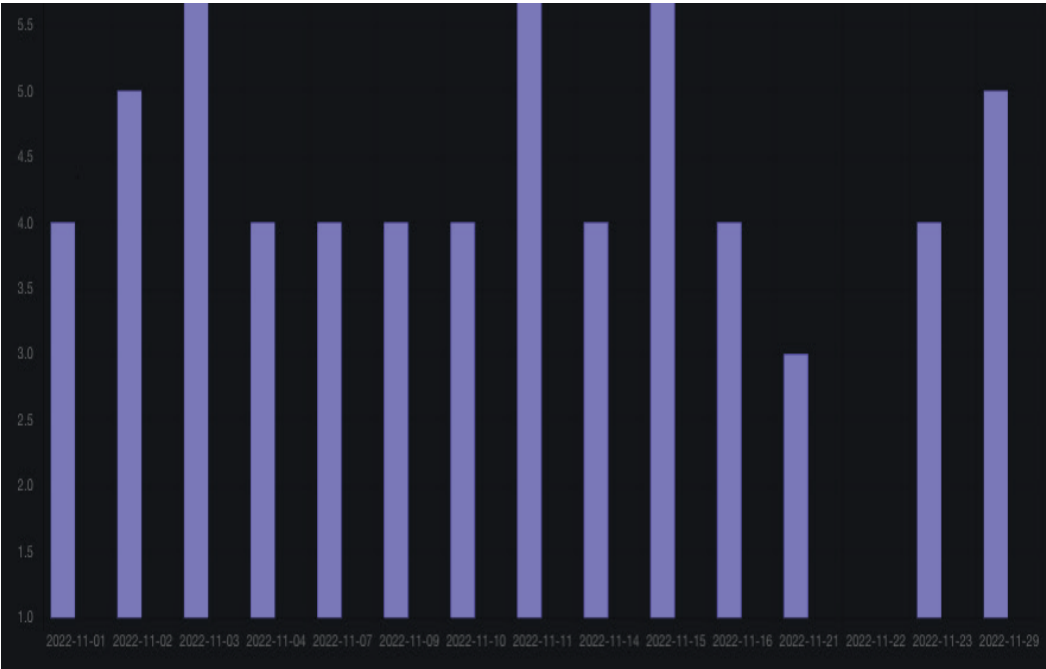
Monthly Tasks Map

Key

- Sweep
- Hazardous
- Graffiti
- Landscaping
- Bulk
- SF311 Outbound
- 911 Call
- Non-Emergency

Trash activity is excluded.

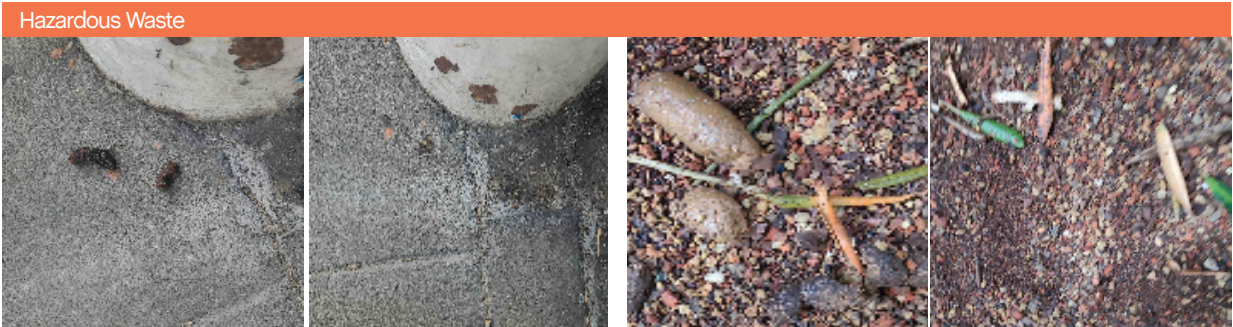
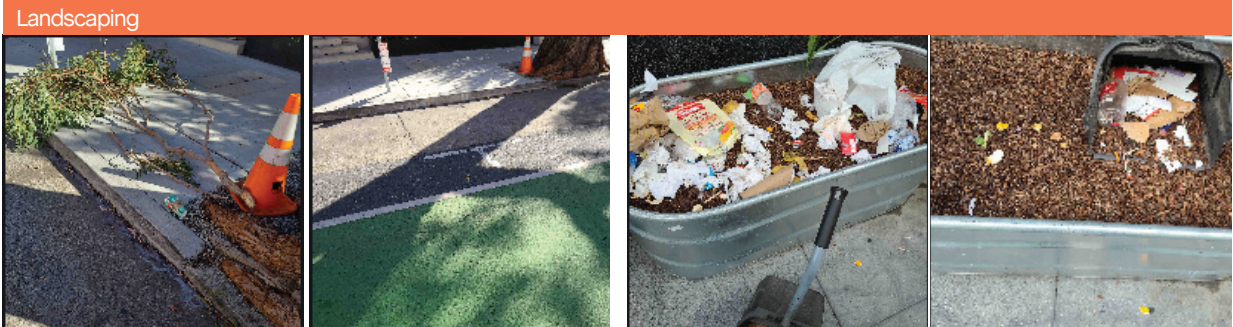
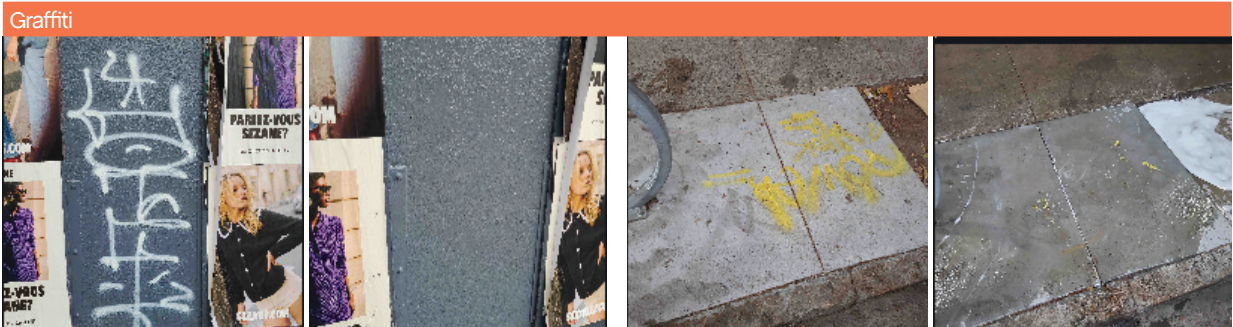
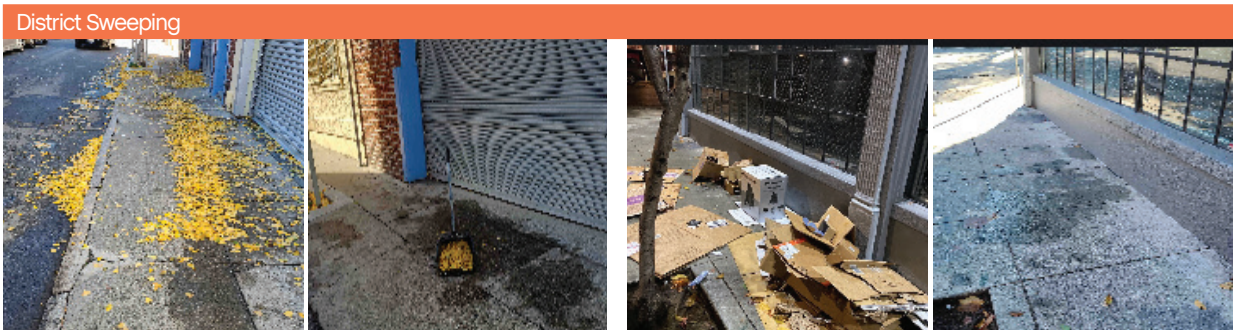
Total Power Washing Tasks Completed Daily



69

Total cleaning tasks completed





72

Total Outreach
cases addressed



Monthly Encampment Map

Here, we're highlighting
encampment counts & trends
throughout the district.

This map shows 3,2523 total
tent counts, an average of
108 per day.





Powered by Jia