

1129 Pearl Street  
Boulder, CO

6,110 Square Feet

## Retail Space Available!

- Spectacular location on the busy Pearl Street Mall
- Large 4-level space
- Newly renovated
- Storefront opens completely to the mall
- Rear, off-alley loading area
- High ceilings at entry
- Heavy Pedestrian Traffic



**TEBO**  
PROPERTIES

Contact us for more information:

[leasing@teboproperties.com](mailto:leasing@teboproperties.com)

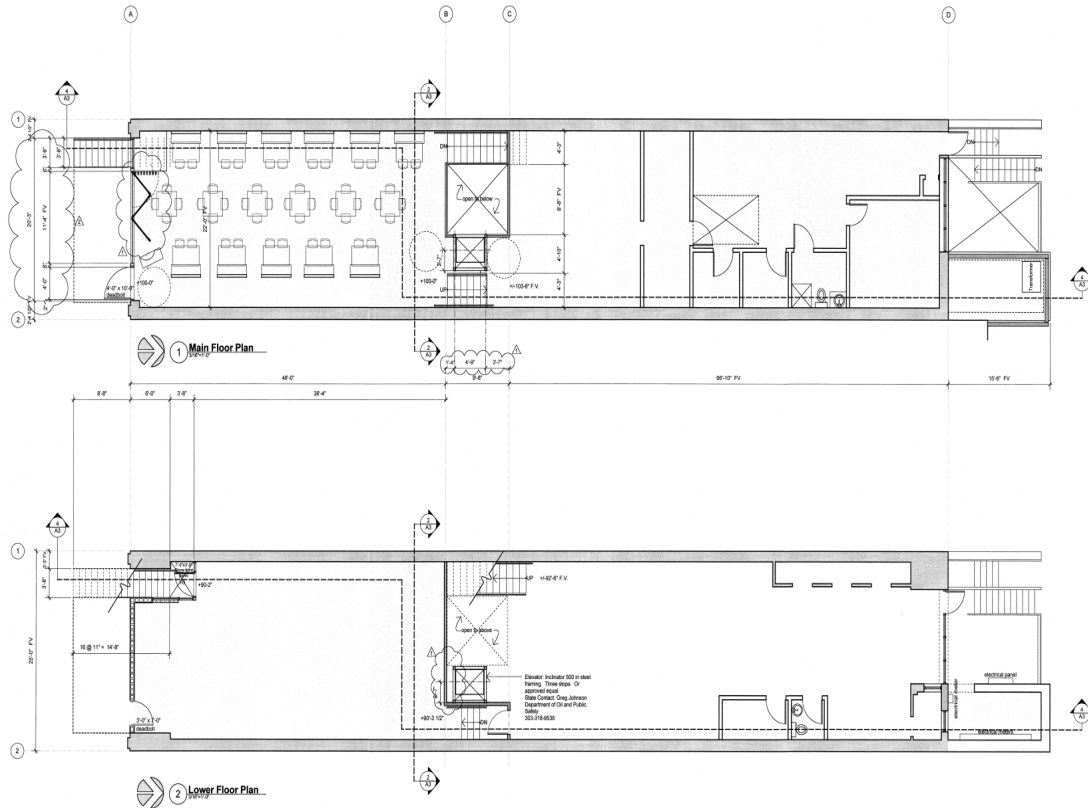
303-447-8326

[www.TEBOproperties.com](http://www.TEBOproperties.com)

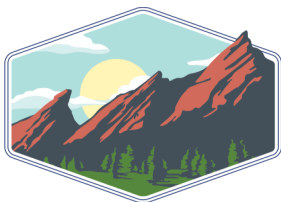


**TEBO**  
PROPERTIES

## 1129 Pearl Street Boulder, CO



Unit	Square Footage	Price
1129 Pearl Street	6,110	\$39.50/SF + \$15.59 (NNN) = \$28,049.99/MO



**TEBO**  
PROPERTIES

Contact us for more information:  
[leasing@teboproperties.com](mailto:leasing@teboproperties.com)  
 303-447-8326  
[www.TEBOproperties.com](http://www.TEBOproperties.com)