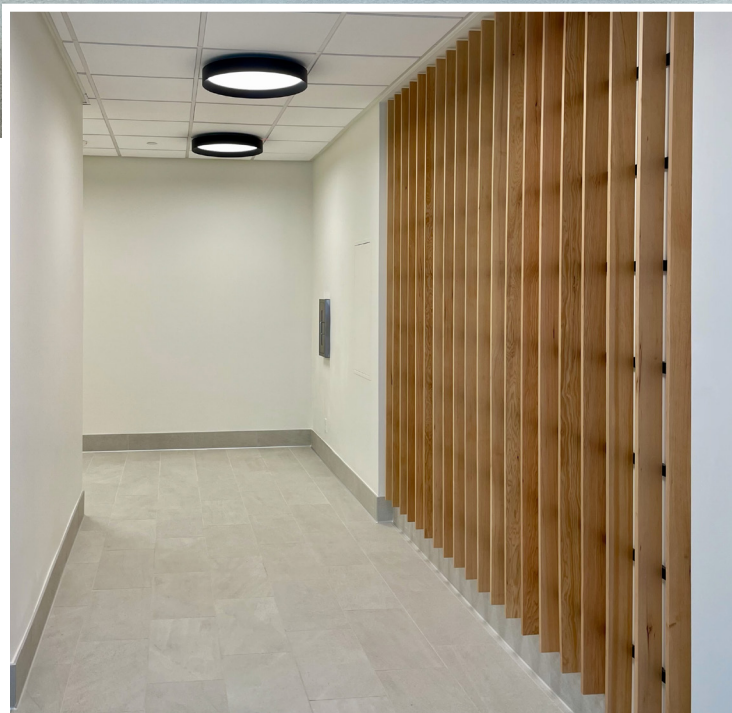


DOWNTOWN BOULDER OFFICE SPACE FOR LEASE

1300 Walnut Street, Boulder, CO 80302



1300 WALNUT



ABOUT THE BUILDING

Renovations are now complete at 1300 Walnut Street! Updated with clean, modern finishes and all new lighting, this two-story office building provides an unbeatable location on the corner of 13th & Walnut, just steps away from all the great amenities that Downtown Boulder has to offer.

- Recently updated common area
- Great Downtown Boulder location
- Steps away from Pearl Street Mall and RTD Transit Station

CHAD HENRY

chenry@wwreynolds.com

DREW WEIMAN

drew@wwreynolds.com

THE
W.W. Reynolds
COMPANIES

P. 303-442-8687
www.wwreynolds.com

1300 WALNUT STREET, BOULDER, CO 80302

SUITE 200



SIZE

12,647 SF



RENT

\$35.00 NNN



AVAILABLE

Immediately



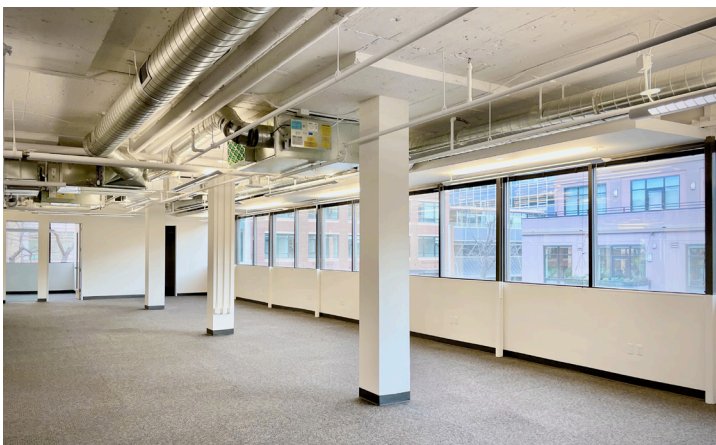
EST. OP EX

\$19.00 / SF

(including utilities)

SPACE NOTES:

Just a touch over 12,500 SF, this renovated second floor office suite is comprised of a generous amount of open area with tall, open, exposed ceilings, conference rooms and offices with glass walls, and a great window line providing lots of natural light.



CHAD HENRY

chenry@wwreynolds.com

DREW WEIMAN

drew@wwreynolds.com

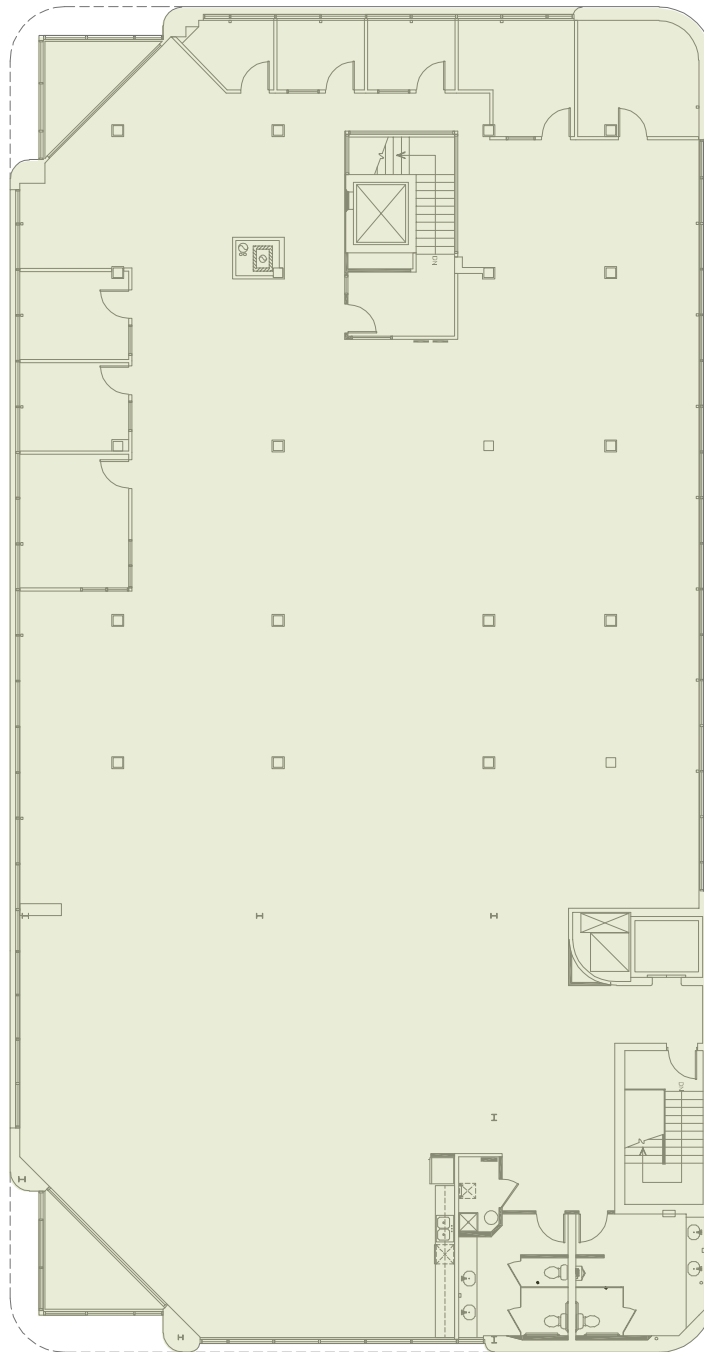
WWW.WWREYNOLDS.COM

P. 303-442-8687



1300 WALNUT STREET, BOULDER, CO 80302

FLOOR PLAN



CHAD HENRY

chenry@wwreynolds.com

DREW WEIMAN

drew@wwreynolds.com

WWW.WWREYNOLDS.COM

P. 303-442-8687



1300 WALNUT STREET, BOULDER, CO 80302

LOCATION



LOCATION NOTES:

Right in the heart of it all is a small but well located two-story building situated on the busy corner of 13th Street and Walnut Street, just one block off the Pearl Street Mall, and across from the RTD Transit Station. The west side of this building faces The Plaza at One Boulder Plaza, which features plenty of outdoor seating and a nice water feature.

CHAD HENRY

chenry@wwreynolds.com

DREW WEIMAN

drew@wwreynolds.com

WWW.WWREYNOLDS.COM
P. 303-442-8687

