

DOWNTOWN BOULDER OFFICE SPACE FOR LEASE

1350 Pine Street, Boulder, CO 80302

THE 1350 BUILDING



ABOUT THE BUILDING

Quiet, cozy and covered in ivy, the 1350 Pine Street building is a gem. This 3 story office building feels tucked away on the corner of 14th & Pine Streets, but is really just a short walk to all that busy downtown Boulder has to offer.

- Great for small office users
- Small suites offering open space, private offices and private bathrooms in each suite with a shower
- Excellent Downtown Boulder Location with parking available
- Estimated Op Ex \$15.28 / SF (not including utilities)

CHAD HENRY

chenry@wwreynolds.com

DREW WEIMAN

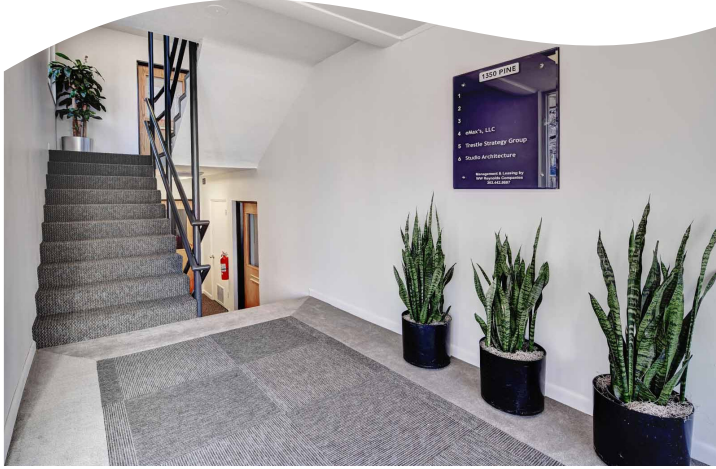
drew@wwreynolds.com

THE
W.W. Reynolds
COMPANIES

P. 303-442-8687
www.wwreynolds.com

1350 PINE STREET, BOULDER, CO 80302

SUITES 1 & 2



UNITS

1 & 2 (Level 1)



RENT

\$16.00 NNN



SIZE

Up to 1,608 SF

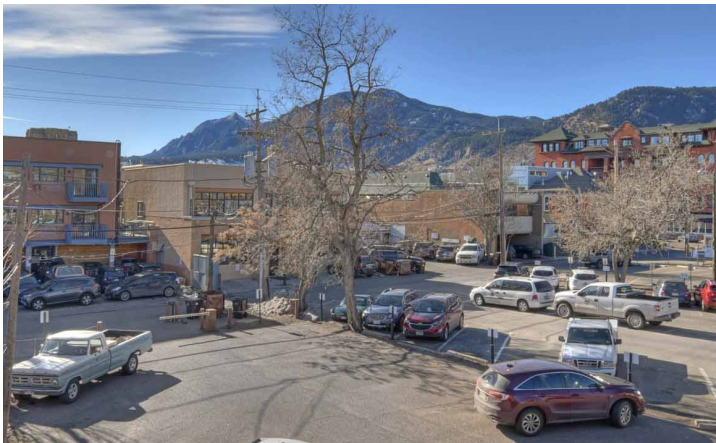
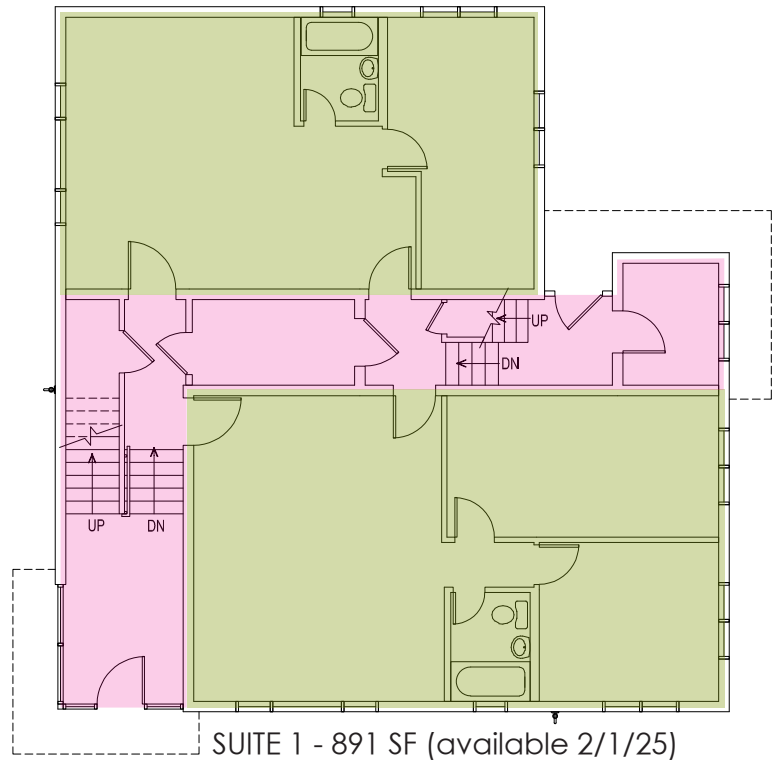


AVAILABLE

February 1, 2025

FLOOR PLAN

SUITE 2 - 716 SF (available now)



CHAD HENRY

chenry@wwreynolds.com

DREW WEIMAN

drew@wwreynolds.com

WWW.WWREYNOLDS.COM

P. 303-442-8687

