

DOWNTOWN BOULDER OFFICE SPACE FOR LEASE

1470 Walnut Street, Boulder, CO 80302

1470 WALNUT ST



ABOUT THE BUILDING

Upscale office building located on the corner of 15th Street and Walnut Street ideally positioned in the center of Downtown Boulder. Situated just one block off the Pearl Street Mall and adjacent to the RTD Transit Center, this property provides an excellent location close to all the wonderful amenities downtown Boulder has to offer.

- Ground floor office space available
- 1,116 square feet
- Abundant window line with great natural light
- On-site showers and locker rooms
- Underground on-site parking available at market rate

CHAD HENRY

chenry@wwreynolds.com

DREW WEIMAN

drew@wwreynolds.com

THE
W.W. Reynolds
COMPANIES

P. 303-442-8687
www.wwreynolds.com

1470 WALNUT STREET, BOULDER, CO 80302
SUITE 111



SIZE
1,116 SF



RENT
\$25.00 NNN



AVAILABLE
April 1, 2025



EST. OP EX
\$27.25 / SF
(including utilities)

SPACE NOTES:

Small office comprised over just over 1,100 SF available for lease in a great Downtown Boulder location just one block off the Pearl Street Mall and next to the RTD Transit Station.



CHAD HENRY

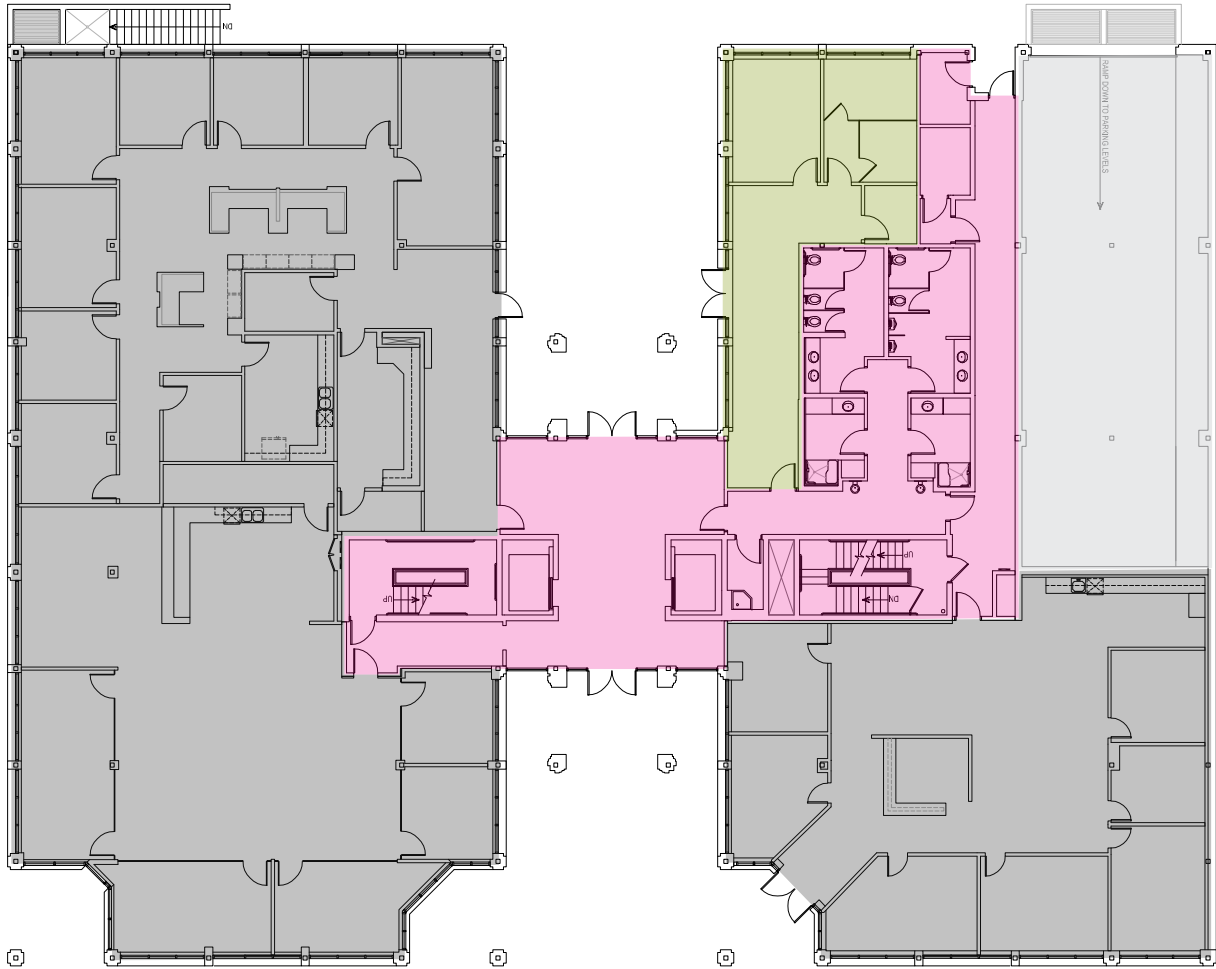
chenry@wwreynolds.com




DREW WEIMAN

drew@wwreynolds.com

1470 WALNUT STREET, BOULDER, CO 80302

FLOOR PLAN



-  LEASED AREA
-  COMMON AREA
-  AVAILABLE AREA

CHAD HENRY

chenry@wwreynolds.com

DREW WEIMAN

drew@wwreynolds.com



1470 WALNUT STREET, BOULDER, CO 80302

LOCATION



LOCATION NOTES:

Located on the busy corner of 15th & Walnut Streets just one block off the Pearl Street Mall and next to the RTD Transit Station, this class "A" building provides a prime location in the heart of Downtown Boulder. It's easily accessible to get to as well as get out of town via Canyon Blvd.

CHAD HENRY

chenry@wwreynolds.com

DREW WEIMAN

drew@wwreynolds.com

WWW.WWREYNOLDS.COM
P. 303-442-8687

