



**1600 Pearl Street**  
Suite 106, Boulder, CO

**Chris Boston, CCIM, MBA**  
cboston@gibbonswhite.com  
(303) 586-5930

**Kegan McNutt**  
kegan@gibbonswhite.com  
(303) 586-5929

www.gibbonswhite.com

 **Property Info & Gallery**

 **View Map**

## Boutique Retail Space on Pearl Street's East End

Available Space	1,061 sq. ft.
Lease Rate / sq. ft.	Negotiable
Expenses / sq. ft.	\$19.43*

\*Including Utilities

- Incredible Storefront Exposure on Pearl Street
- Tall, Exposed Ceilings with an Abundance of Natural Light
- Ample Street Parking and Easy Access to the City Parking Garage Across the Street
- Private Restroom within the Space
- Great Neighboring Tenants Including: Arc'teryx, Patagonia, Sweetgreen, Snooze, Maine Shack, & Many More
- Managed Locally by Unico Properties LLC – Known for its Commitment to Delivering Top-Tier Custom Service & Building Quality

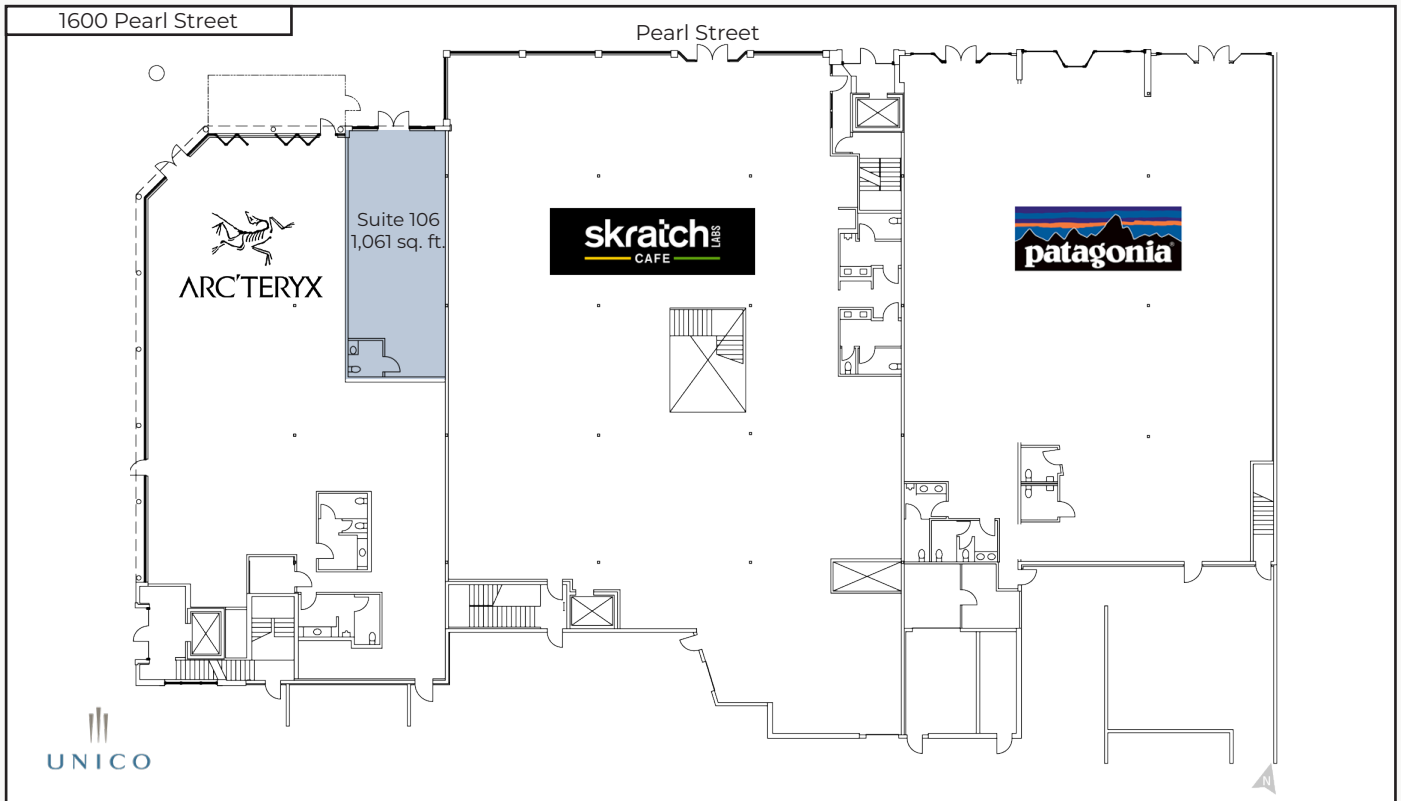


The information included has been obtained from sources believed reliable. While we do not doubt the accuracy of the information, it has not been verified and no guarantee, warranty, or representation is being made.



2305 Canyon Blvd, Suite 200, Boulder, CO 80302 - (303) 442-1040

© 2024 Gibbons-White, Inc.



The information included has been obtained from sources believed reliable. While we do not doubt the accuracy of the information, it has not been verified and no guarantee, warranty, or representation is being made.



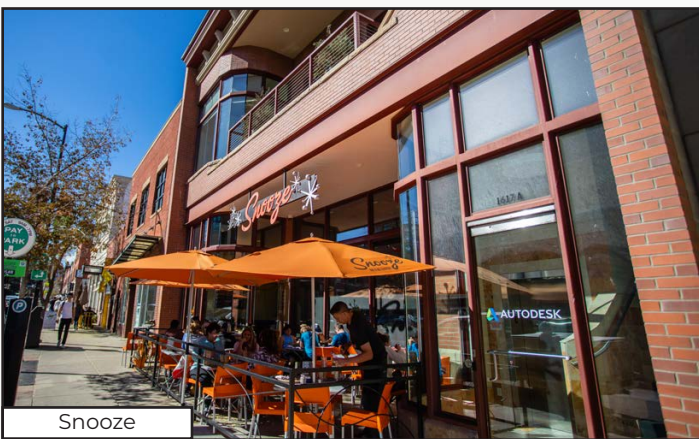
Avanti



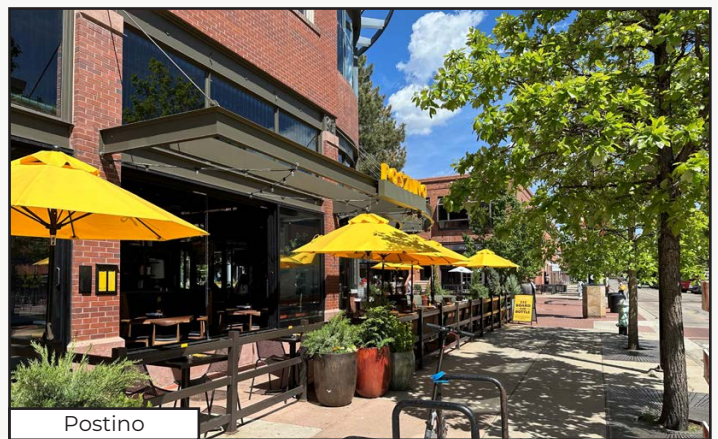
Black Diamond



Learn More: [hellopearlstreet.com](http://hellopearlstreet.com)



Snooze



Postino



The information included has been obtained from sources believed reliable. While we do not doubt the accuracy of the information, it has not been verified and no guarantee, warranty, or representation is being made.