

**1900 9th Street  
Suites 200 & 310  
Boulder, CO**

**1,721 or 3,578 Square Feet**

## Office Space Available!

- Prime corner location in West End District (9th & Walnut)
- Class A finishes with vaulted ceilings and great natural lighting
- Walking distance to RTD bus station, restaurants, and many other amenities
- Exterior balconies featuring amazing views of the Flatirons
- Parking available
- Common area showers and break room
- Kitchenette in 3rd floor suite



**TEBO**  
PROPERTIES

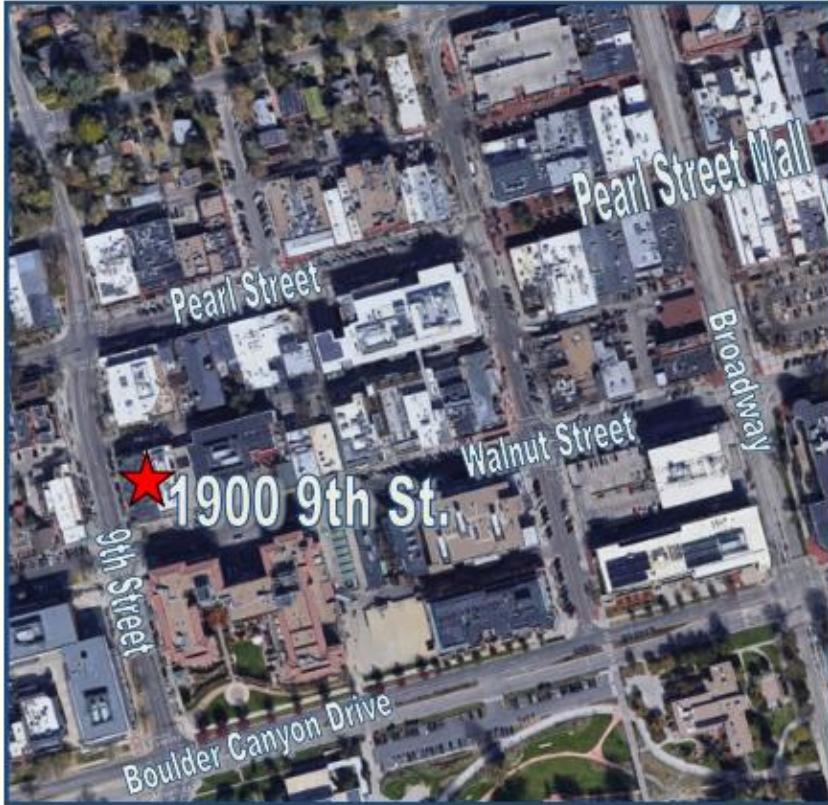
Contact us for more information:  
[leasing@teboproperties.com](mailto:leasing@teboproperties.com)  
303-447-8326  
[www.TEBOproperties.com](http://www.TEBOproperties.com)





**TEBO**  
PROPERTIES

**1900 9th Street, Boulder, CO**



Unit	Square Footage	Price
200	3,578	\$27.50/ SF + \$25.24 (NNN) = \$15,725.31/MO
310	1,721	\$34.50/SF + \$25.24 (NNN) + \$350.00/MO patio space = \$8,567.71/MO



**TEBO**  
PROPERTIES

Contact us for more information:  
[leasing@teboproperties.com](mailto:leasing@teboproperties.com)  
 303-447-8326  
[www.TEBOproperties.com](http://www.TEBOproperties.com)

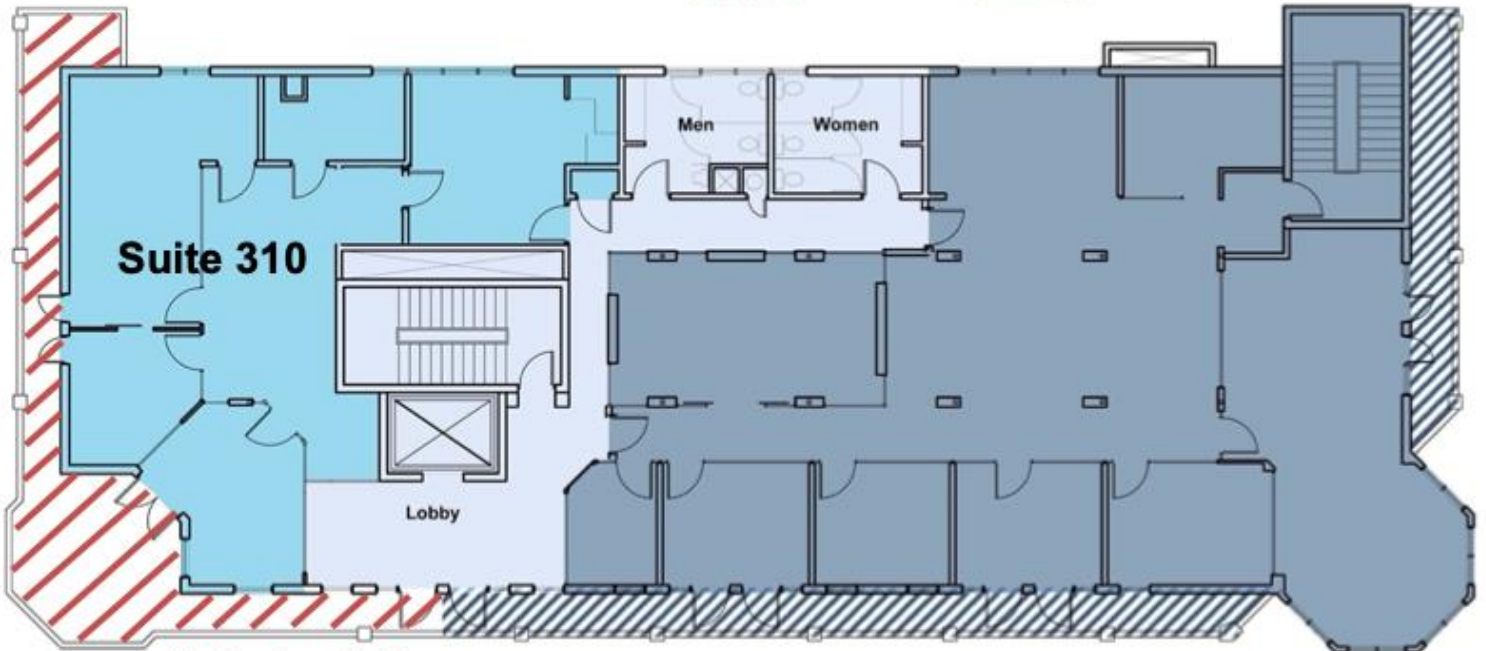
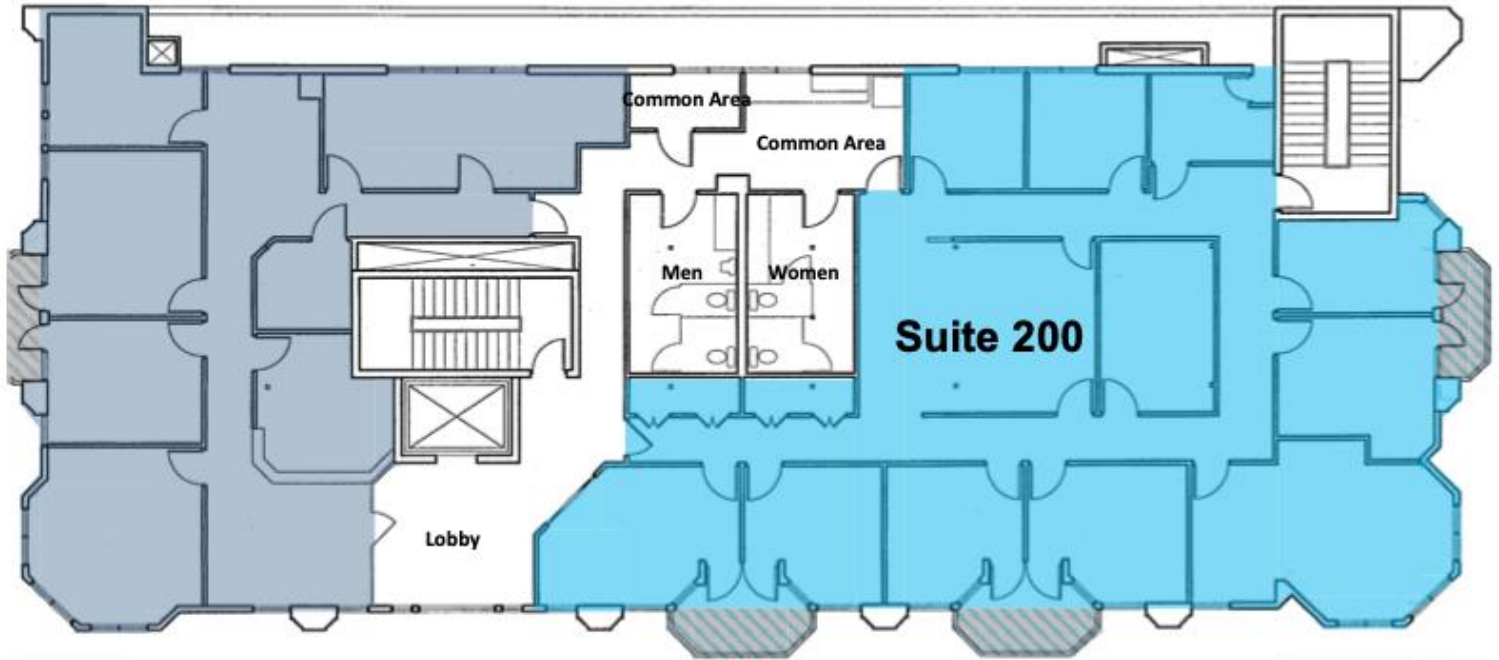


# OFFICE SPACE FOR LEASE



**TEBO**  
PROPERTIES

## 1900 9th Street, Boulder, CO



Exclusive Patio



**TEBO**  
PROPERTIES

Contact us for more information:

[leasing@teboproperties.com](mailto:leasing@teboproperties.com)

303-447-8326

[www.TEBOproperties.com](http://www.TEBOproperties.com)