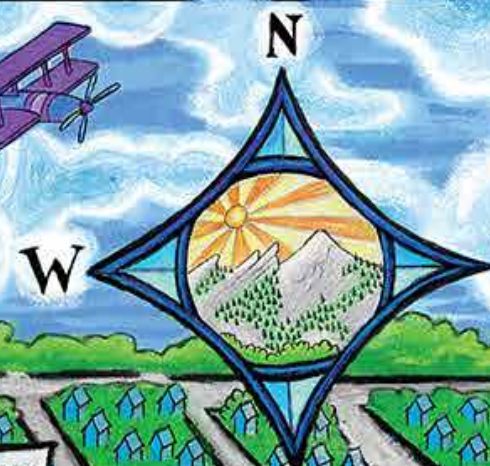




Use your camera phone and scan here.
View the most up-to-date business listings and hours of operations at LoveTheLocal.com!

DOWNTOWN BOULDER VISITOR MAP



MORE SHOPS & RESTAURANTS BETWEEN 11TH & 8TH STREETS

MORE SHOPS & RESTAURANTS BETWEEN 15TH & 21ST STREETS

ST JULIEN HOTEL & SPA

KEY

	RESIDENTIAL		PARKING
	COMMERCIAL		ACCESSIBLE PARKING SPACES
	FEATURE		ONE WAY STREET
	B-CYCLE STATION		

Web: BoulderDowntown.com
Parking: BoulderParking.com



APPAREL & ACCESSORIES

Alpaca Connection – 1334 Pearl St.
Athleta – 1133 Pearl St.
Barbara & Company – 1505 Pearl St.
Billabong – 1101 Pearl St.
Boco Life – 1615 Pearl St.
By Elke – 1721 Pearl St.
Canoe Club – 777 Pearl St.
Cedar & Hyde – 2015 10th St.
Charlie’s T-Shirts – 1412 Pearl St.
Earthbound Trading Co. – 1222 Pearl St.
Elison Rd. – 1110 Pearl St.
Fjällräven – 1048 Pearl St.
FP Movement – 1200 Pearl St.
Free People – 1212 Pearl St.
Go Far – 2005 Pearl St.
The Hat Collection – 1500 Pearl St.
Haven – 943 Pearl St.
Helly Hansen – 1207 Pearl St.
Island Farm – 1122 Pearl St.
Jackalope & Co. – 1126 Pearl St.
John Allen Woodward – 1505 Pearl St. #104
Jones + Co. – 1949 Pearl St.
MAX Clothing Store – 1177 Walnut St.
Miriam’s – 2021 Broadway
MontBell – 1500 Pearl St.
Mountain Standard – 1537 Pearl St.
Nomad – 2050 Broadway
The North Face – 1129 Pearl St.
Patagonia – 1630 Pearl St.
prAna- 1147 Pearl St.
Ragstock – 1580 Canyon Blvd.
Ramble On Pearl – 1638 Pearl St.
The Ritz – 959 Walnut St.
Savvy on Pearl – 1114 Pearl St.
Sherpani – 1711 Pearl St.
Sock Em’ – 1468 Pearl St.
Songbird – 1631 Pearl St.
Stio – 1505 Pearl St. #105
Tittle Nine – 1801 Pearl St.
Umba – 2043 Broadway
Urban Outfitters – 934 Pearl St.
Volcom – 1223 Pearl St.
Weekends – 1200 Pearl St.
Where the Buffalo Roam – 1320 Pearl St.

ARTS/CRAFTS/GALLERIES

15th Street Gallery – 1708 15th St.
Art Mart Gifts – 1326 Pearl St.
Art + Soul Gallery – 1505 Pearl St.
Art Source International, Inc.- 1237 Pearl St.
Boulder Arts & Crafts Gallery – 1421 Pearl St.
Boulder Museum of Contemporary Art – 1750 13th St.
By Elke – 1721 Pearl St.
Canyon Gallery & Theater – 1001 Arapahoe Ave.
Crystal Galleries – 1302 Pearl St.
Dancing Grains Woodworks – 1545 Pearl St.
Fair Trade Winds – 1219 Pearl St.
Liberty Puzzles – 1468 Pearl St.
Museum of Boulder – 2205 Broadway
Nikita Coulombe Fine Art – 1920 13th St.
Nomad Bead Merchants – 1909 9th St.
PosterScene – 1505 Pearl St.
R Gallery – 2027 Broadway
Rembrandt Yard Event Center & Art Gallery – 1301 Spruce St.
SmithKlein Gallery – 1116 Pearl St.

AUTO

Circle K – 1704 Arapahoe Ave.
Shell – 1480 Canyon Blvd.

BANKS

AMG National Trust – 1155 Canyon Blvd.
ANB Bank – 1360 Walnut St.
Bank of America – 1917 Broadway
BOK Financial – 2025 Pearl St.
Capital One Café – 1247 Pearl St.
Chase Bank – 1301 Canyon Blvd.
CityWide Bank – 1611 Canyon Blvd.
Community Banks of Colorado – 2049 Broadway
Elevations Credit Union – 1301 Walnut St.
FirstBank – 2120 Broadway
First National Bank – 1155 Canyon Blvd.
First Western Trust – 1155 Canyon Blvd.
Flatirons Bank- 1095 Canyon Blvd.
Great Western Bank – 1900 9th St.
Independant Financial – 1300 Walnut St.
MidFirst Bank – 840 Pearl St.
Sunflower Bank – 1738 Pearl St.
Vectra Bank – 1700 Pearl St.
Wells Fargo – 1242 Pearl St.

BOOKS/MUSIC/VIDEO

Beat Book Shop – 1200 Pearl St.
Boulder Book Store – 1107 Pearl St.
Boulder Drum Studio – 1320 Pearl St.
Christian Science Reading Room – 1434 Pearl St.
Goodrich Violin Shop – 1045 Pearl St.
Lighthouse Bookstore – 1201 Pearl St.
Red Letter Secondhand Books – 1737 Pearl St.
Trident Booksellers & Café – 940 Pearl St.

CARTS

Boulder Bowls – 1300 Pearl St.
Fast Eddie’s Hot Dogs – 1300 Pearl St.
Freddie’s Hot Dogs – 1100 Pearl St.
Glacier Gelato & Sorbet – 1300 Pearl St.
Glacier Ice Cream – 1400 Pearl St.
Heads Up – 1300 Pearl St.
McDevitt Taco Supply – 1300 Pearl St.
Sol Stones – 1200 Pearl St.
The Stand – 1100 Pearl St.
Sun Spot – 1200 Pearl St.
Sunshine Shave Ice – 1200 Pearl St.
Trek Light Gear – 1200 Pearl St.

CHURCHES/SPIRITUAL CENTERS

First Congregational – 1128 Pine St.
First United Methodist – 1421 Spruce St.
Grace Commons Church – 1820 15th St.
Pine Street Church – 1237 Pine St.
Sacred Heart of Jesus Church – 1317 Mapleton St.
Shambhala Center – 1345 Spruce St.
St. John’s Episcopal Church – 1419 Pine St.
Trinity Lutheran – 2200 Broadway

ENTERTAINMENT/ACTIVITIES

Color Me Mine – 1938 Pearl St.
eTown – 1535 Spruce St.
Fabricate – 2017 17th St.
Food Lab – 1825 Pearl St.
Museum of Boulder – 2205 Broadway
Reality Garage – 1320 Pearl St.
The Riverside – 1724 Broadway

GIFTS/STATIONERY/TOYS

Art Mart Gifts – 1326 Pearl St.
Bliss – 1643 Pearl St.
Boulder Bazaar – 1500 Pearl St.
Boulder Nepal – 1330 Pearl St.

Gifts / Stationery / Toys continued...

Crystal Galleries – 1302 Pearl St.
El Loro Jewelry & Gifts – 1416 Pearl St.
Fair Trade Winds – 1219 Pearl St.
Gypsy Jewel – 820 Pearl St.
Into the Wind – 1408 Pearl St.
Ku Cha House of Tea – 1211 Pearl St.
Liberty Puzzles – 1468 Pearl St.
Lolo Rugs & Gifts – 1141 Pearl St.
Lunieva – 1727 Pearl St.
Old Tibet – 948 Pearl St.
Paper Doll – 2021 Broadway
Paradise Arts & Crafts – 2015 Broadway
Savannah Bee Co. – 1222 Pearl St.
Tibet Gallery – 1909 9th St.
Two Hands Paperie – 803 Pearl St.
Zuni Fetishes – 1424 Pearl St.

HAIR SALONS & DAY SPAS

1313 A Salon – 1313 Spruce St.
Beauty Underground – 1966 13th St.
Bleu Chair Salon – 1966 13th St.
Blo Blow Dry Bar – 1600 Pearl St.
Clean Your Dirty Face – 2098 Broadway
The Dragontree Spa – 1521 Pearl St.
Ember Beauty & Barbering – 1215 Spruce St.
The Honey Pot – 2019 19th St.
La Belle Nail Salon – 1962 13th St.
Marianna’s Aesthetic & Spa – 1215 Spruce St.
The Parlour – 1037 Walnut St.
Paul Morrison Colours – 2015 15th St.
Pompadours Hair Salon Aveda – 1320 Pearl St.
Rollins Barbershop – 1642 Pearl St.
Salon Liquid – 1100 Spruce St.
Shear Abby Salon – 956 Pearl St.
The Sidedoor Salon – 2070 Broadway
St Julien Hotel and Spa – 900 Walnut St.
Sweep Balayage Bar – 901 Pearl St.
Twig Salon & Spa – 1831 Pearl St.
Voodoo Hair Lounge – 2100 Pearl St.

HEALTH/FITNESS/PERSONAL CARE

Amana Yoga – 949 Walnut St.
Boulder Natural Boutique – 1048 Pearl St.
Boulder Psychic Institute – 1332 Pearl St.
Iris Body Piercing – 1713 Pearl St.
Lush Cosmetics – 1215 Pearl St.
Massage Specialists – 1640 Broadway
One Boulder Fitness – 1800 Broadway
Onus IV Bar – 1035 Walnut St.
Premier Health IV Hydration Lounge – 1966 13th St.
Rebecca’s Herbal Apothecary & Supply – 1227 Spruce St.
Six Persimmons Apothecary – 728 Pearl St.
St Julien Hotel and Spa – 900 Walnut St.
Symmetry Therapy – 1100 Spruce St. #102
Tru Skincare – 956 Pearl St.

HOME/KITCHEN/GARDEN

Bartlett Interiors – 2020 Pearl St.
Bedell & Co. Fine Antiques & Estate Jewelry – 767 Pearl St.
Canova Home – 1200 Pearl St.
Cedar & Hyde – 2015 10th St.
Cedar & Hyde Home – 2019 10th St.
Chantique – 2020 11th St.
Dancing Grains Woodworks – 1545 Pearl St.
Earthbound Trading Co. – 1222 Pearl St.
Fabricate – 2023 17th St.
HW Home – 1941 Pearl St.
Island Farm – 1122 Pearl St.
Jones + Co. – 1949 Pearl St.
Lolo Rugs & Gifts – 1141 Pearl St.
Peppercorn – 1235 Pearl St.

Home / Kitchen / Garden continued...

Perla – 1123 Pearl St.
Savannah Bee Co. – 1222 Pearl St.
Savory Spice – 2041 Broadway
Wildflower Nation – 2023 17th St.

HOTELS/B&BS

Basecamp Boulder – 2020 Arapahoe
Boulder University Inn – 1632 Broadway
The Bradley Boulder Inn – 2040 16th St.
Briar Rose Bed and Breakfast – 2151 Arapahoe Ave.
Hotel Boulderado – 2115 13th St.
St Julien Hotel and Spa – 900 Walnut St.

JEWELRY

Adorned – 1909 9th St.
Angie Star Jewelry – 1807 Pearl St.
Art + Soul Gallery – 1505 Pearl St.
Bedell & Co. Fine Antiques & Estate Jewelry – 767 Pearl St.
Bohemi Jewelry – 1717 Pearl St.
Carla Morrison Fine Jewelry – 2017 10th St.
Christine Marguerite Designs – 1942 Broadway, Ste 407
Classic Facets Antique Jewelry – 942 Pearl St.
El Loro Jewelry & Gifts – 1416 Pearl St.
Gypsy Jewel – 820 Pearl St.
Hurdle’s Jewelry – 1402 Pearl St.
J.Albrecht Designs Master Goldsmiths – 951 Pearl St.
John Atencio – 1048 Pearl St.
Little Jewel – 1225 Pearl St.
Starfish – 1136 Pearl St.
Todd Reed – 1911 Pearl St.

LIQUOR/MARKETS/SMOKE SHOPS & DISPENSARIES

Alfalfa’s – 1651 Broadway
Buddha’s & Goudha’s Enlightened Smoke Shop – 2009 13th St.
Cured – 1825 Pearl St.
The Dandelion – 845 Walnut St.
The General Store – 1407 Walnut St.
Helping Hands Herbals – 1021 Pearl St.
Infused, A CBD Marketplace – 1909 9th St.
Lolita’s Market & Deli – 800 Pearl St.
Marquis Cannabis – 1909 Broadway (lower level)
Mile High Pipe & Tobacco – 1144 Pearl St.
Native Roots – 1146 Pearl St.
Silver Vines – 2037 13th St.
Trill Alternatives – 1537 Pearl St.
The Village Green Society – 2043 16th St.
West End Wine Shop – 777 Pearl St.

NIGHT SPOTS/ENTERTAINMENT

The Attic Bar & Bistro – 949 Walnut St.
The Bitter Bar – 835 Walnut St.
Bohemian Biergarten – 2017 13th St.
Boulder Theater – 2032 14th St.
Centro Mexican Kitchen – 950 Pearl St.
eTown – 1535 Spruce St.
Jungle – 2018 10th St.
License No. 1 – 2115 13th St.
Mountain Sun Pub & Brewery – 1535 Pearl St.
Nitro Club – 1124 Pearl St.
Pearl Street Pub & Cellar – 1108 Pearl St.
Press Play – 1005 Pearl St.
Spotted James – 1911 11th St.
Sundown Saloon – 1136 Pearl St.
Tonic Herban Lounge – 2011 10th St.
West End Tavern – 926 Pearl St.
West Flanders Brewing Company – 1125 Pearl St.

OPTICAL

EnVision Boulder – 1011 Pearl St.
Zeal Optics – 1230 Spruce St.

OUTDOOR & SPORTING GOODS

Active Imprints – 1926 14th St.
Burton – 1048 Pearl St.
Full Cycle – 1795 Pearl St.
Gunsport – 1707 14th St.
Helly Hansen – 1207 Pearl St.
Norrøna – 1130 Pearl St.
The North Face – 1129 Pearl St.
Pedego Electric Bikes – 2015 13th St.
Rapha – 1815 Pearl St.
Stio – 1505 Pearl St. #105
University Bicycles – 839 Pearl St.

PETS

Arapahoe Animal Hospital – 1730 15th St.
Farfel’s Farm – 906 Pearl St.

RESTAURANTS

ASIAN / SUSHI / INDIAN

Amu Sake Bar & Restaurant – 1221 Spruce St.
Ash’kara – 1043 Pearl St.
Blofish – 1932 14th St.
Chimera – 2014 10th St.
Daikon Banh Mi Shop – 919 Pearl St.
Fuji Bar & Café – 2018 Broadway
Hapa Sushi Grill & Sake Bar – 1117 Pearl St.
Jaipur – 1214 Walnut St.
Japango – 1136 Pearl St.
Sherpa’s Adventurers – 825 Walnut St.
Sushi Zanmai – 1221 Spruce St.
Zoe Ma Ma – 2010 10th St.

BREWPUBS

Mountain Sun Pub & Brewery – 1535 Pearl St.
Oskar Blues Taproom – 921 Pearl St.
The Post Brewing Co. – 2027 13th St.
West Flanders Brewing Company – 1125 Pearl St.

CASUAL

The Attic Bar & Bistro – 949 Walnut St.
Avanti Boulder – 1401 Pearl St.
Bohemian Biergarten – 2017 13th St.
Bramble & Hare – 1970 13th St.
The Corner Bar – 2115 13th St.
Foolish Craig’s Cafe – 1611 Pearl St.
Mountain Sun Pub & Brewery – 1535 Pearl St.
Next Door – 1035 Pearl St.
Oskar Blues Boulder Taproom – 921 Pearl St.
Pearl Street Pub & Cellar – 1108 Pearl St.
The Post Brewing Co. – 2027 13th St.
Rosetta Hall – 1109 Walnut St.
Snooze, An A.M. Eatery – 1617 Pearl St.
Sweetgreen – 1601 Pearl St.
Thrive Raw Vegan – 1504 Arapahoe St.
West End Tavern – 926 Pearl St.
West Flanders Brewing Company – 1125 Pearl St.

COFFEE / TEA / JUICE & SWEETS

Alpine Modern Coffee Bar – 1048 Pearl St.
Amante Coffee – 1023 Walnut St.
Astro Coffee Bar – 2052 Broadway
Ben & Jerry’s Scoop Shop – 1203 Pearl St.
Boulder Baked – 1911 Broadway
Boulder Dushanbe Teahouse – 1770 13th St.
Boxcar Coffee Roasters – 1825 Pearl St.
Brewing Market Coffee – 1918 13th St.
Capital One Café – 1247 Pearl St.
Gelato Boy – 1433 Pearl St. (Mall) & 1021 Pearl St. (West End)
Kilwins Boulder – 1426 Pearl St.
Ku Cha House of Tea – 1211 Pearl St.
Laughing Goat – 1709 Pearl St.

Coffee / Tea / Juice & Sweets continued...

Lindsay’s Boulder Deli @ Häagen Dazs – 1148 Pearl St.
Ozo – East Pearl- 1521 Pearl St.
Ozo – West Pearl- 1015 Pearl St.
Piece, Love & Chocolate – 805 Pearl St.
Rapha – 1815 Pearl St.
Rocket Fizz – 1441 Pearl St.
Rocky Mountain Chocolate Factory – 1300 Pearl St.
Spruce Confections – 767 Pearl St.
Trident Booksellers & Cafe – 940 Pearl St.
Whole Sol Blend Bar – 1420 Pearl St.
Wonder – 946 Pearl St.

CONTEMPORARY / FINE DINING

Arcana – 909 Walnut St.
Black Cat – 1964 13th St.
Boulder Dushanbe Teahouse – 1770 13th St.
Corrida – 1023 Walnut St.
Frank’s Chophouse – 921 Walnut St.
Frasca Food & Wine – 1738 Pearl St.
Jax Fish House – 928 Pearl St.
Jill’s Restaurant – 900 Walnut St.
The Kitchen Bistro – 1039 Pearl St.
Leaf Vegetarian Restaurant – 1710 Pearl St.
Mateo – 1837 Pearl St.
OAK at Fourteenth – 1400 Pearl St.
SALT Bistro – 1047 Pearl St.
Spruce Farm & Fish – 2115 13th St.
Steakhouse No. 316 – 1922 13th St.
Upstairs – 1039 Pearl St.

ITALIAN / MEDITERRANEAN / PIZZA

Arabesque – 1634 Walnut St.
Falafel King – 1314 Pearl St.
Nick-N-Willy’s Pizza – 801 Pearl St.
Pasta Jay’s – 1001 Pearl St.
Pizza Colore – 1336 Pearl St.
Pizzeria Locale – 1730 Pearl St.
Sforno Trattoria Romana – 1308 Pearl St.

MEXICAN / LATIN / SOUTH AMERICAN

Bartaco – 1048 Pearl St.
Centro – 950 Pearl St.
Illegal Pete’s – 1447 Pearl St.
Rio Grande Mexican Restaurant – 1101 Walnut St.
TJACO – 1175 Walnut St.

QUICK SERVICE / SANDWICHES

Cured – 1825 Pearl St.
Daikon Banh Mi Shop – 919 Pearl St.
Dish – 1918 Pearl St.
Falafel King – 1314 Pearl St.
Illegal Pete’s – 1447 Pearl St.
Lindsay’s Boulder Deli @ Häagen Dazs – 1148 Pearl St.
Lolita’s Market & Deli – 800 Pearl St.
Organic Sandwich – 1500 Pearl St.
Ruthies Boardwalk Social – 1397 Pearl St.
Seeds Café – 1001 Arapahoe Ave.
Sweetgreen – 1601 Pearl St.
Whole Sol – 1420 Pearl St.
Wonder – 946 Pearl St.
Yellow Deli – 908 Pearl St.

SERVICES

Art Cleaners, Inc. – 1715 15th St.
Red Rocks Locksmith – 1966 13th St.
uBreakiFix (electronics repair) – 1136 Spruce St.

SHOES

Active Imprints – 1926 14th St.
El Loro Jewelry & Clog Co. – 1416 Pearl St.
Freebird Stores – 1142 Pearl St.
Go Far – 2005 Pearl St.
Pedestrian Shops – 1425 Pearl St.
Savvy on Pearl – 1114 Pearl St.
Shoe Fly – 947 Pearl St.
Two Sole Sisters – 1703 Pearl St.

PUBLIC BUILDINGS

Boulder Chamber of Commerce – 2440 Pearl St.
Boulder Convention & Visitors Bureau – 2440 Pearl St.
Boulder County Justice Center – 1777 6th St.
Boulder County Courthouse – 13th and Pearl St.
Carnegie Library – 1125 Pine St.
Municipal Building – 1777 Broadway
Boulder Public Library – 1001 Arapahoe Ave.
RTD Bus Station – 1800 14th St.
U.S. Post Office – 1905 15th St.
YWCA – 2222 14th St.

PUBLIC RESTROOMS

13th and Pearl
9th and Canyon

PARKING STRUCTURES

City Owned:

11th & Spruce
10th & Walnut (St Julien Hotel)
11th & Walnut
14th & Walnut (RTD Bus Station)
15th & Pearl

Privately Owned:

15th & Spruce
One Boulder Plaza
All parking structures are free Saturdays, Sundays & Holidays except One Boulder Plaza and 15th & Spruce

PARKING LOTS

Broadway & Spruce
14th & Canyon (by permit only weekdays)
13th & Walnut
Public Library – 11th & Arapahoe
Municipal Building – 11th & Canyon

BOULDER B-CYCLE STATIONS

9th & Pearl	13th & Spruce
11th & Pearl	15th & Pearl
1015 Arapahoe	20th & Pearl
1777 Broadway	13th & Arapahoe
14th & Canyon	

Produced By



City of Boulder Community Vitality (Parking, Access, Economic Vitality & District Management)

in partnership with:



303-449-3774
BoulderDowntown.com
1942 Broadway Suite 301