

OFFICE SPACE FOR LEASE

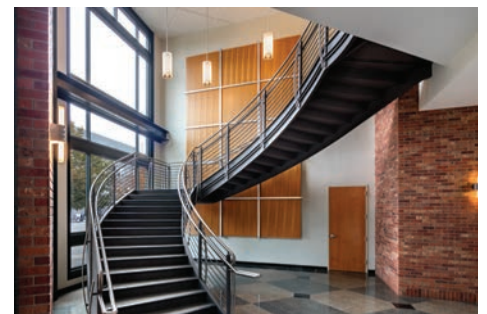
636 COFFMAN STREET | LONGMONT, COLORADO



Roosevelt Place is the answer to Longmont's need for true class "A" office space

Roosevelt Place is strategically situated to offer maximum natural lighting, inspiring Rocky Mountain views and has a high efficiency design. It features a dramatic two-story entry with grand staircase and third floor balconies.

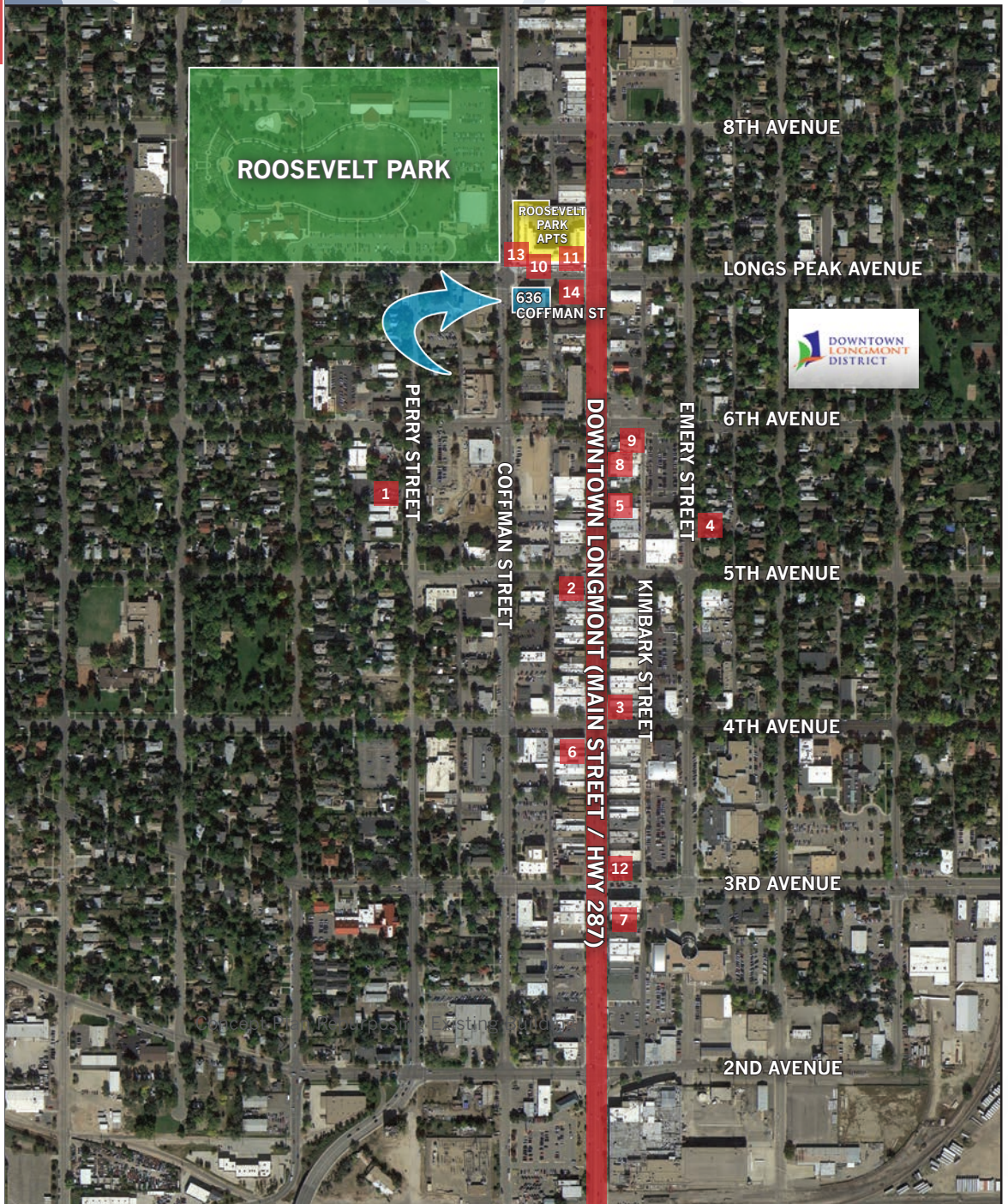
- Total Space Available For Lease: 2,669 SF
 - Suite 300 -2,669 SF
- Lease Rate: Negotiable
- Western mountain views
- Ample on site and close in street parking
- Ideal location in Longmont's Downtown and Arts & Entertainment District
- 20-Acre Roosevelt Park 1 block away
- Across the street from luxury Roosevelt Park Apartments development
- Regional RTD Park and Ride 1 block away



OFFICE SPACE FOR LEASE 636 COFFMAN STREET | LONGMONT, COLORADO

NEARBY AMENITIES

- 1 
- 2 
- 3 
- 4 
- 5 
- 6 
- 7 
- 8 
- 9 
- 10 
- 11 
- 12 
- 13 
- 14 



FOR MORE INFORMATION, CONTACT:

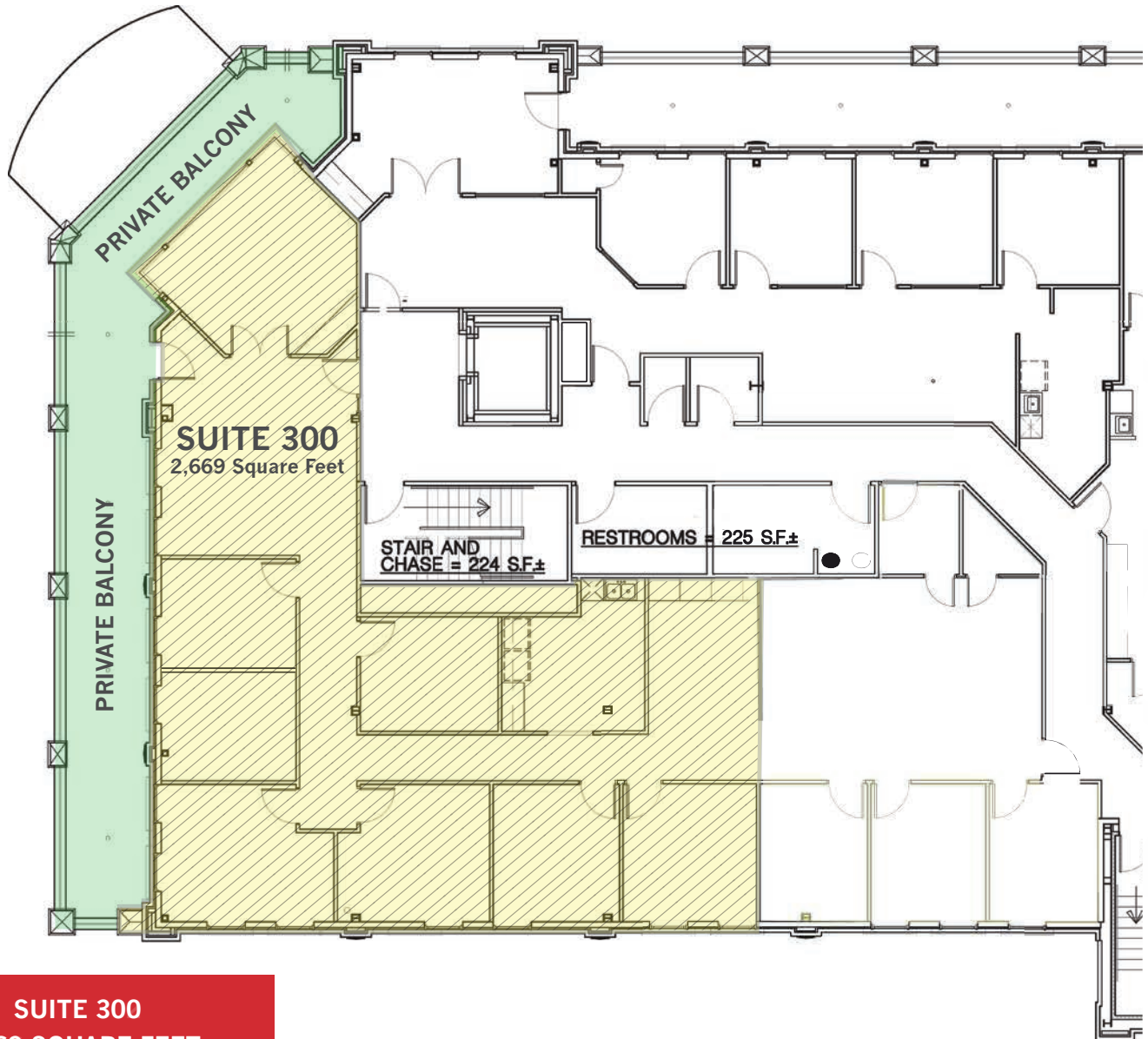
Keith E. Burden keith@burdeninc.com

Joseph L. Perrotto joseph@burdeninc.com

Phone: 303.652.8868 | www.burdeninc.com

PO Box 490 | 263 2nd Avenue, Suite 101, Niwot, Colorado 80544





SUITE 300
2,669 SQUARE FEET

FOR MORE INFORMATION, CONTACT:

Keith E. Burden keith@burdeninc.com

Joseph L. Perrotto joseph@burdeninc.com



Phone: 303.652.8868 | www.burdeninc.com

PO Box 490 | 263 2nd Avenue, Suite 101, Niwot, Colorado 80544