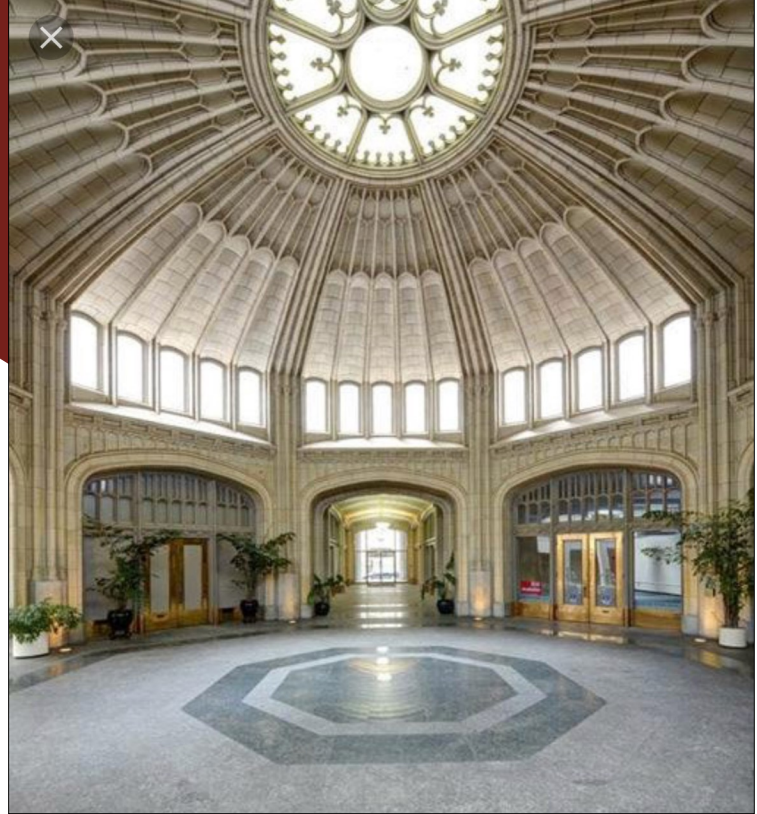




HEALEY BUILDING

# Downtown Retail Space for Lease HISTORIC HEALEY BUILDING

Bounded by Broad Street, Walton Street, Forsyth Street & Poplar Street



## Healey Building

57 Forsyth St NW Atlanta, GA 30303

**SIZE:** 1,796 RSF  
**RATE:** \$25.00/SF NNN  
**OPEX:** \$9.24/SF

- Street Level Exposure and Access
- Adjacent to GA State University, Rialto Theatre, GSU Aderhold Learning Center & the GSU School of Music
- MARTA Rail & Street Car Access
- Located in the Heart of the Opportunity Zone. For more information go to <https://www.investatlanta.com/business/bonds-incentives/opportunity-zones/>
- Building on the National Register of Historic Places

Dave Smith

404.869.2605

dave@joelandgranot.com

For complete details, please visit: [www.joelandgranot.com](http://www.joelandgranot.com)



**JOEL & GRANOT**  
COMMERCIAL REAL ESTATE

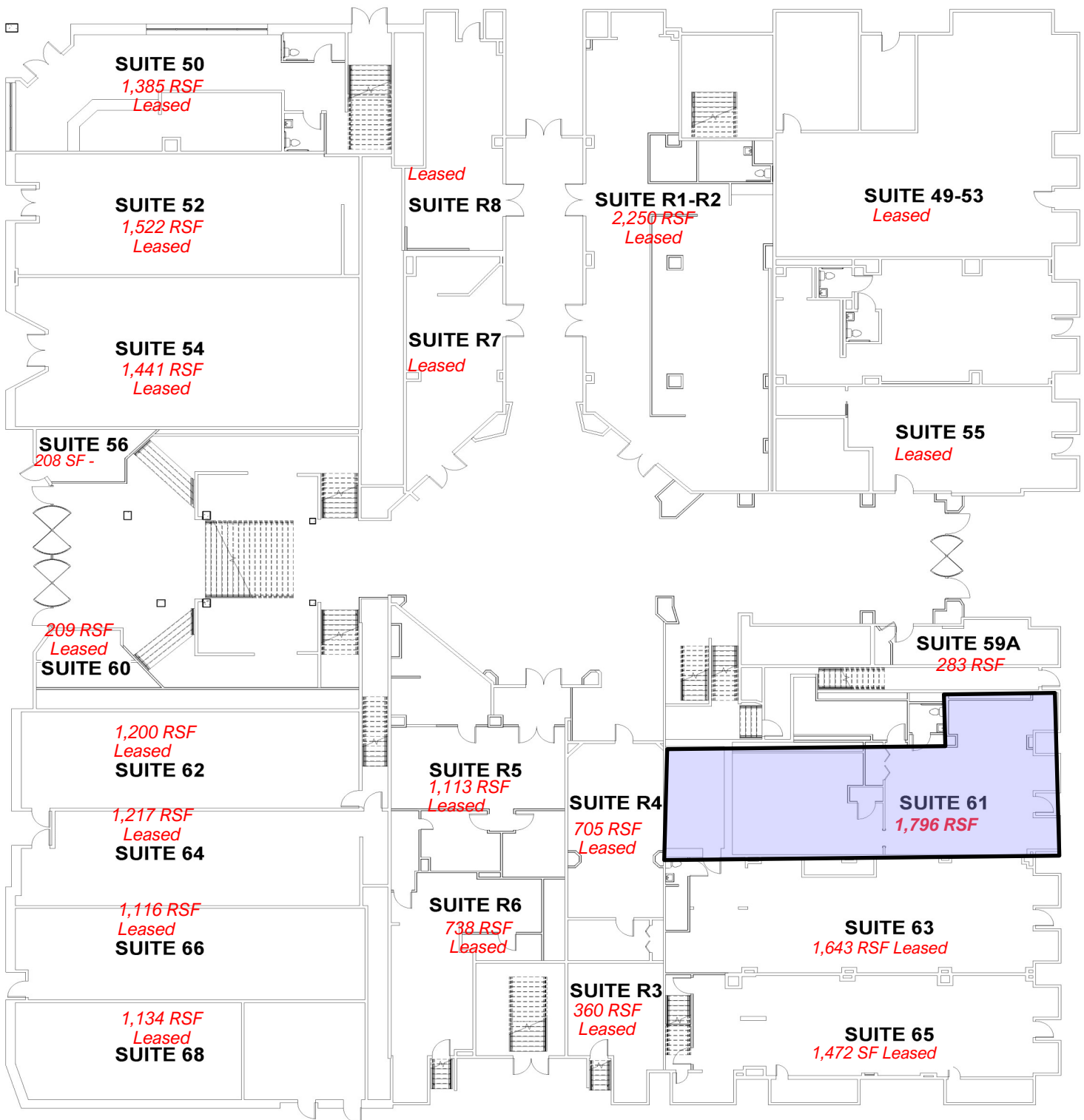
633 Antone St NW, Atlanta, GA 30318  
(ph) 404.869.2600 | (fax) 404.869.2601

The information was obtained from sources we assume are reliable. We do not doubt its accuracy, however we do not guarantee it. No liability is assumed for errors and omissions. Information is subject to changes and withdrawal without notice.



HEALEY BUILDING

# Healey Building Retail Floor Plan



633 Antone St NW, Atlanta, GA 30318  
(ph) 404.869.2600 | (fax) 404.869.2601

The information was obtained from sources we assume are reliable. We do not doubt its accuracy, however we do not guarantee it. No liability is assumed for errors and omissions. Information is subject to changes and withdrawal without notice.

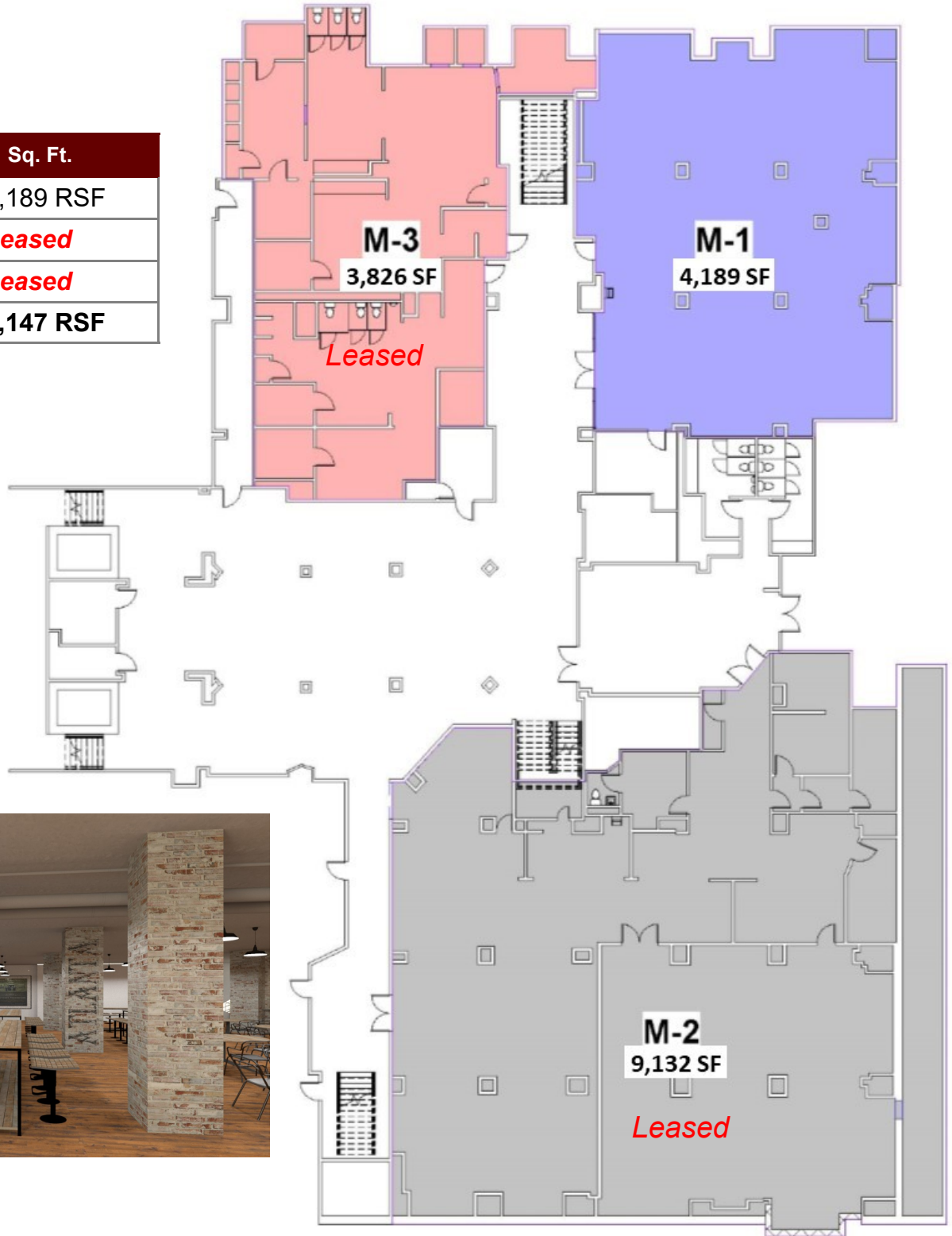


HEALEY BUILDING

# Healey Building Market Level Floor Plan

\$12.00/SF

Market Level	Sq. Ft.
M-1	4,189 RSF
<i>M-2</i>	<i>Leased</i>
<i>M-3</i>	<i>Leased</i>
<b>TOTAL</b>	<b>17,147 RSF</b>



633 Antone St NW, Atlanta, GA 30318  
 (ph) 404.869.2600 | (fax) 404.869.2601

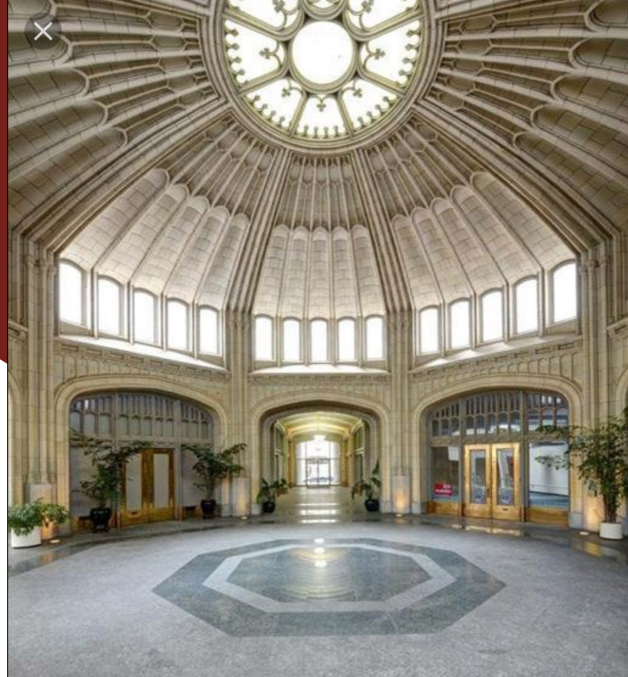
The information was obtained from sources we assume are reliable. We do not doubt its accuracy, however we do not guarantee it. No liability is assumed for errors and omissions. Information is subject to changes and withdrawal without notice.



HEALEY BUILDING

# Downtown Retail Space For Lease HISTORIC HEALEY BUILDING

Bounded by Broad Street, Walton Street, Forsyth Street & Poplar Street



## Healey Building

57 Forsyth St NW, Suite 55  
Atlanta, GA 30303

[Click Here to View Video](#)

**SIZE:** 845 RSF  
**RATE:** \$40.00/SF  
**NNN OPEX:** \$9.25/SF

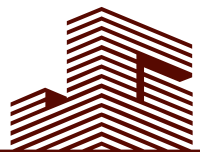
- Direct Access on Forsyth Street with Space Being an End Cap
- Adjacent to (12) Full Service Restaurants
- Adjacent to GSU Aderhold Learning Center, Rialto Theatre & the GSU School of Music
- MARTA and Street Rail Access
- Located in the Heart of the Opportunity Zone. For more information go to <https://www.investatlanta.com/business/bonds-incentives/opportunity-zones/>
- Building on the National Register of Historic Places
- Available 4/1/2023

Dave Smith

404.869.2605

dave@joelandgranot.com

For complete details, please visit: [www.joelandgranot.com](http://www.joelandgranot.com)



**JOEL & GRANOT**  
COMMERCIAL REAL ESTATE

633 Antone St NW, Atlanta, GA 30318  
(ph) 404.869.2600 | (fax) 404.869.2601

The information was obtained from sources we assume are reliable. We

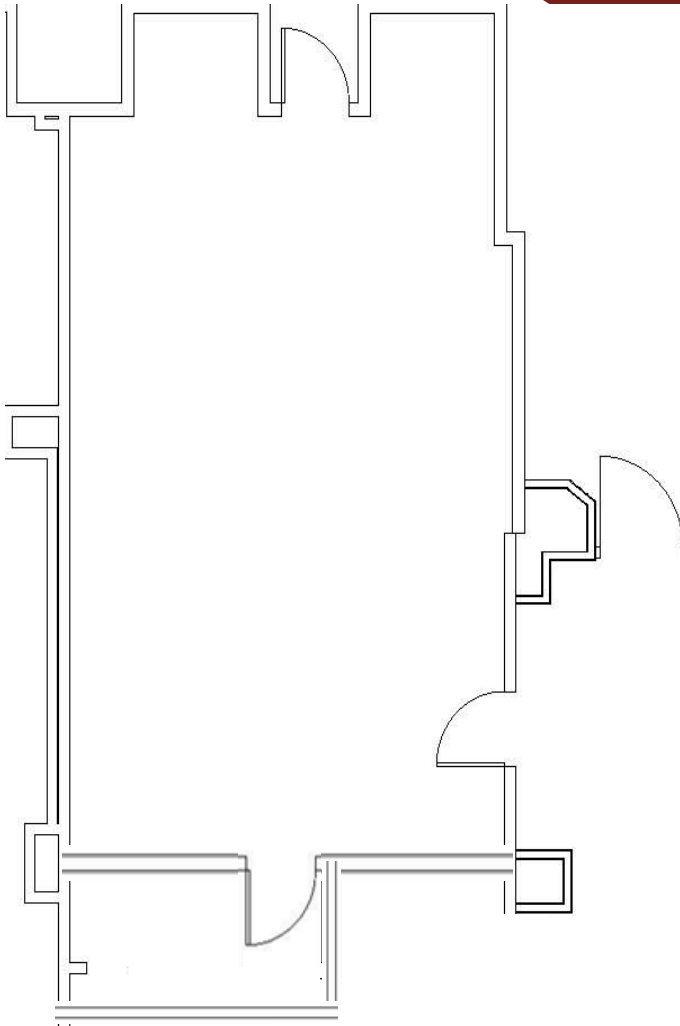
do not doubt its accuracy, however we



HEALEY BUILDING

# Healey Building Suite 55 845 RSF

## Forsyth Street



**Dave Smith**  
404.869.2605  
dave@joelandgranot.com

[Click Here to View Video](#)

For complete details, please visit: [www.joelandgranot.com](http://www.joelandgranot.com)



**JOEL & GRANOT**  
COMMERCIAL REAL ESTATE

633 Antone St NW, Atlanta, GA 30318  
(ph) 404.869.2600 | (fax) 404.869.2601

The information was obtained from sources we assume are reliable. We do not doubt its accuracy, however we do not guarantee it. No liability is assumed for errors and omissions. Information is subject to changes and withdrawal without notice.



HEALEY BUILDING

# Healey Building Retail Floor Plan

Walton Street



Broad Street

Forsyth St.

Poplar Street

[Click Here to View Video](#)

633 Antone St NW, Atlanta, GA 30318  
(ph) 404.869.2600 | (fax) 404.869.2601

The information was obtained from sources we assume are reliable. We do not doubt its accuracy, however we do not guarantee it. No liability is assumed for errors and omissions. Information is subject to changes and withdrawal without notice.



HEALEY BUILDING

# Downtown Restaurant / Retail Space For Lease HISTORIC HEALEY BUILDING

Bounded by Broad Street, Walton Street, Forsyth Street & Poplar Street



## Healey Building

57 Forsyth St NW, Suite 63 (On the Corner of Poplar & Forsyth Street)  
Atlanta, GA 30303

**SIZE:** 3,115 RSF

**RATE:** Negotiable

**OPEX:** \$9.24/SF

- Street Level Exposure and Access
- Built Out Restaurant Space with Vent, Hood, Grease Trap, Refrigerator and Freezer
- Adjacent to , GSU Aderhold Learning Center, Rialto Theatre & the GSU School of Music
- Formerly Big Dave's Cheesesteaks
- Located in the Heart of the Opportunity Zone. For more information go to <https://www.investatlanta.com/business/bonds-incentives/opportunity-zones/>
- Building on the National Register of Historic Places
- Available Immediately



Dave Smith

404.869.2605

dave@joelandgranot.com

For complete details, please visit: [www.joelandgranot.com](http://www.joelandgranot.com)



JOEL & GRANOT

COMMERCIAL REAL ESTATE

633 Antone St NW, Atlanta, GA 30318  
(ph) 404.869.2600 | (fax) 404.869.2601

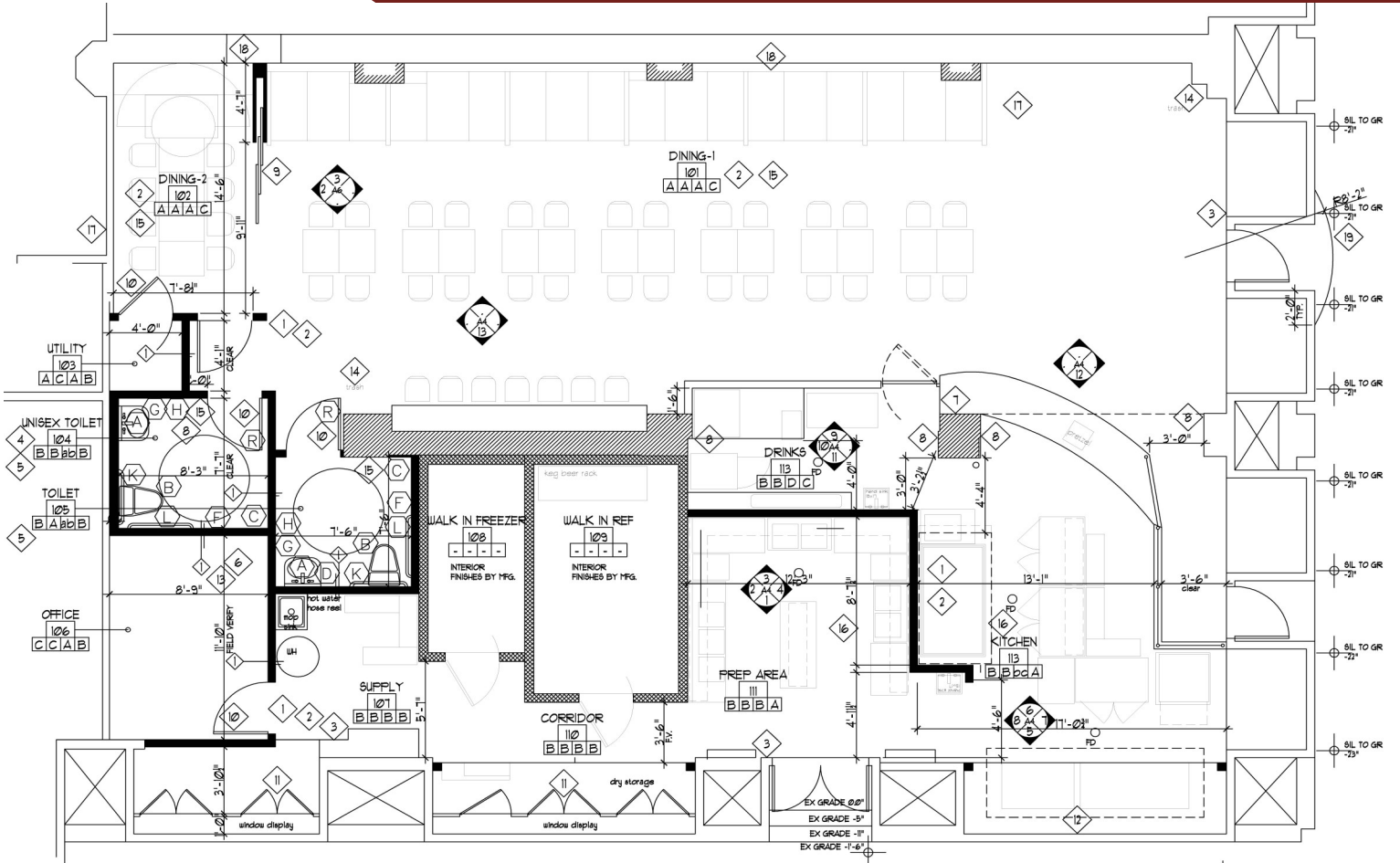
The information was obtained from sources we assume are reliable. We

do not doubt its accuracy, however we



# Healey Building Suite 63 3,115 RSF

HEALEY BUILDING



Dave Smith  
404.869.2605  
dave@joelandgranot.com

For complete details, please visit: [www.joelandgranot.com](http://www.joelandgranot.com)



633 Antone St NW, Atlanta, GA 30318  
(ph) 404.869.2600 | (fax) 404.869.2601

The information was obtained from sources we assume are reliable. We do not doubt its accuracy, however we do not guarantee it. No liability is assumed for errors and omissions. Information is subject to changes and withdrawal without notice.





HEALEY BUILDING

# Healey Building Retail Floor Plan

Walton Street



633 Antone St NW, Atlanta, GA 30318  
(ph) 404.869.2600 | (fax) 404.869.2601

The information was obtained from sources we assume are reliable. We do not doubt its accuracy, however we do not guarantee it. No liability is assumed for errors and omissions. Information is subject to changes and withdrawal without notice.