

**THE ONLY**

**NEIGHBORHOOD**

**THAT DOUBLES**

**AS A CANVAS**

*FuschiaNLM* by Cynthia Flaxman at Elder Gallery

The First Friday Gallery Crawl is hosted by

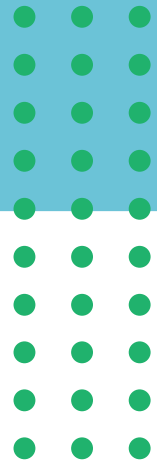
**SOUTH END**  
CHARLOTTE, NC

[SouthEndCLT.org](http://SouthEndCLT.org)

SOUTH END

FIRST FRIDAY

# GALLERY CRAWL



**AUGUST 5**

## Featuring:

**Hodges Taylor**  
5 - 7 p.m.

**Elder Gallery**  
5 - 8 p.m.

**Dilworth Artisan Station**  
6 - 9 p.m.

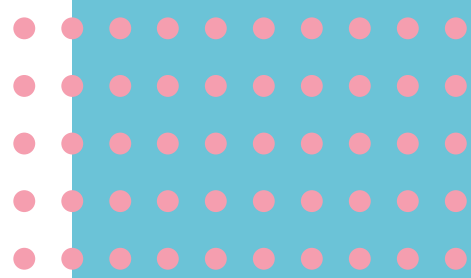
**StudioWorks Artist Collective + Gallery**  
5 - 8 p.m.

**Shed Brand Studios**  
5 - 8 p.m.

**South End Interactive**

## Looking for Bites & Brews?

Explore South End and support local:



# Gallery Exhibitions / Featured Artists

## AUGUST 5

### 1 Hodges Taylor 1414 S. Tryon St | 5 - 7 PM

Hodges Taylor welcomes a pop-up shop by Ash & Ochre featuring functional contemporary craft, small batch wares, textiles, ethically sourced crystals, herbal concoctions, beeswax candles, and vintage finds for your sacred space and home. The pop-up will be at the gallery from August 3 to 13.

[hodgestaylor.com](http://hodgestaylor.com)

### 2 Elder Gallery 1520 S. Tryon St | 5 - 8 PM

Elder Gallery hosts two new exhibits: The first is *Seduction* with pieces by Charlotte-based Cynthia Flaxman Frank, Jill Jones, and Marlene Rose. The second is *Empty Spaces* by William A. Nogura, an artist, author, speaker, activist, co-host of *Death Row Diaries* True-crime Podcast, and who served on Death Row at San Quentin Prison for more than three decades.

[eldergalleryclt.com](http://eldergalleryclt.com)

### 3 Dilworth Artisan Station 118 E. Kingston Ave | 6 - 9 p.m.

Tour 30+ artists' studios on the 2nd and 3rd floors of Dilworth Artisan Station, a restored historic building located along the Rail Trail. Stop by the first floor to visit the newly opened Canopy Cocktails & Garden before or after your tour.

[dilworthartisan.com](http://dilworthartisan.com)

### 4 StudioWorks Gallery + Artist Collective 307 East Blvd | 5 - 8 p.m.

StudioWorks is home to 11 all-women, professional artists. The August show is called *Summer Travels* and includes new art by Jenny Fuller and Sally Higgins.

[studioworksgallery.com](http://studioworksgallery.com)

### 5 Shed Brand Studios 216 Iverson Way, Suite A | 5 - 8 PM

Shed Brand Studios will have custom doors, crafted jewelry, handmade pottery, and stained glass on display. Register for an upcoming fused glass pendant class as you tour their space.

[shedbrandstudios.com](http://shedbrandstudios.com)

### South End Interactive Self-guided tour

Interact with 10 murals in South End for a behind-the-scenes video about the artists and their artistic inspiration. Follow [@southendclt](https://twitter.com/southendclt) to join an upcoming tour hosted by ArtWalks CLT founder Anne Lowe and a local artist.

[southendclt.org/things-to-do/south-end-interactive](http://southendclt.org/things-to-do/south-end-interactive)

### Live Music Rail Trail | 5 - 7 p.m.

Enjoy Live Music performed by local Charlotte musicians during the First Friday Gallery Crawl this summer. South End is partnering with Communities in Concert ([@MusicEverywhereCLT](https://twitter.com/MusicEverywhereCLT)) to host a *Summer Breeze* live music series at various locations along the Rail Trail.

[southendclt.org/post/summer-breeze-south-end-summer-music-series](http://southendclt.org/post/summer-breeze-south-end-summer-music-series)

Thanks for your support!  
We'll see you at the next  
First Friday Gallery Crawl  
on September 2, 2022.

