

The Hue

High-Profile Ground Floor Retail in the Heart of Downtown Raleigh

Ideally located at the highly trafficked intersection of W Hargett Street and S Dawson Street (26,000 VPD) in Downtown Raleigh, this ground floor retail opportunity is located beneath the Hue, a hip multi-family development consisting of 208 units.

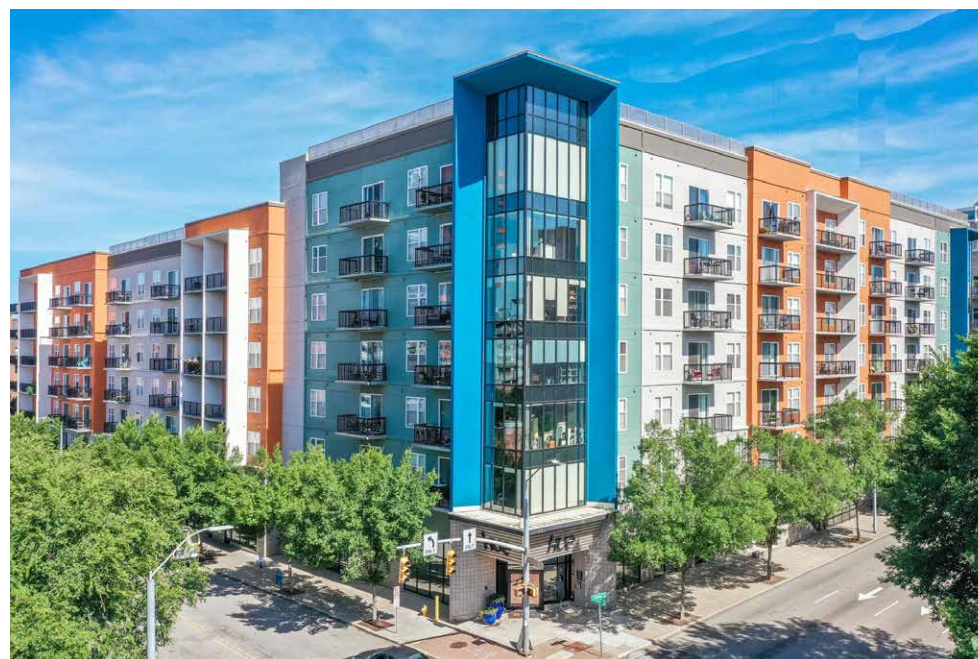
- + 865 SF ground floor retail space available February 1, 2022
- + Cotenants include A Place at the Table, Cirque de Vol, and Retro Modern Furnishings
- + Strong daytime population of nearly 40,000 within one mile
- + 3.5 million annual visitors to Downtown Raleigh's top attractions

| 2021 DEMOGRAPHICS | 1 MILE | 3 MILES | 5 MILES |
|--------------------|----------|----------|----------|
| Population | 19,435 | 109,215 | 221,850 |
| Households | 9,229 | 41,304 | 86,588 |
| Average HH Income | \$90,688 | \$93,447 | \$92,262 |
| Daytime Population | 39,979 | 131,336 | 288,313 |

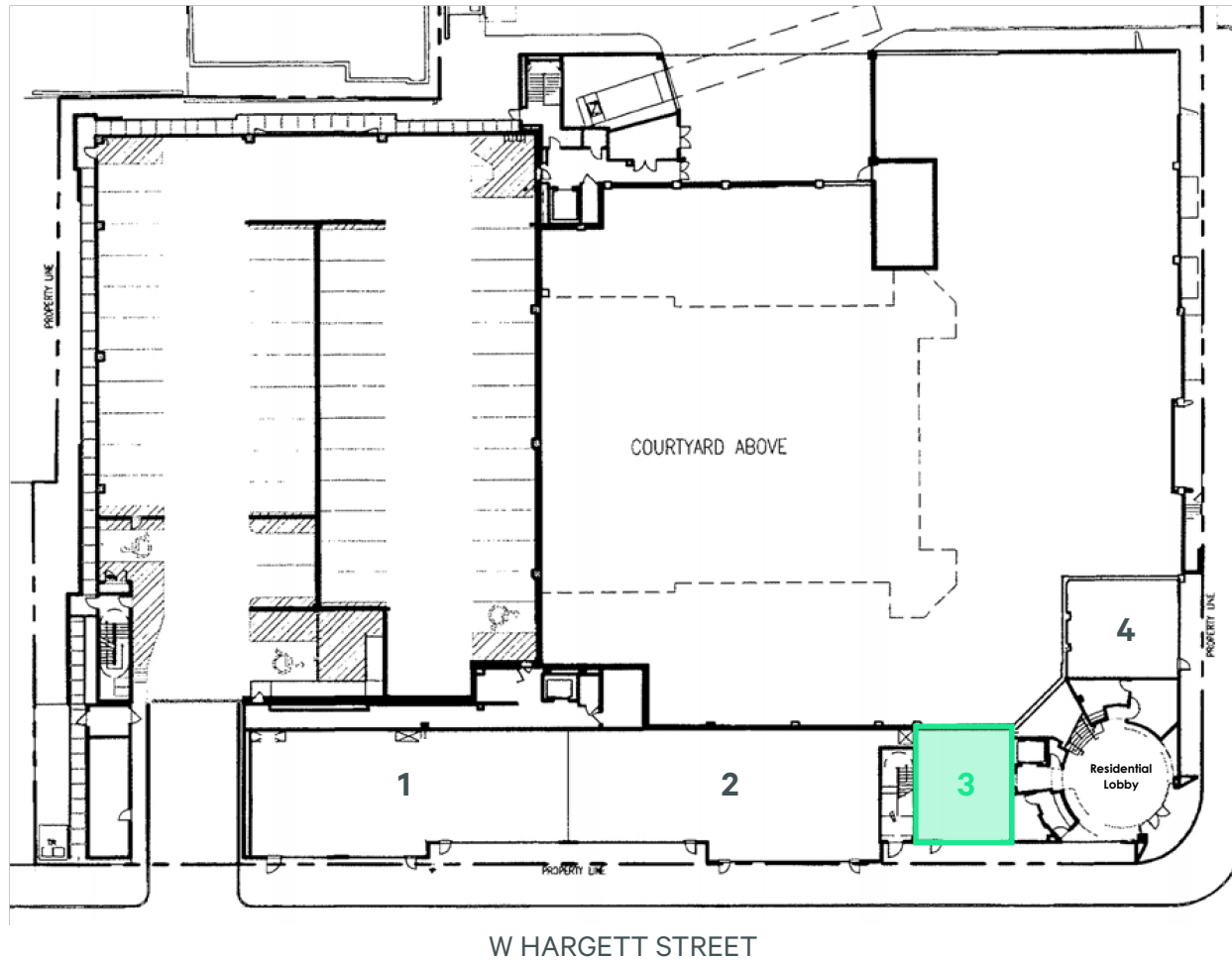
Contact Us

Matt Larson
Senior Vice President
+1 919 831 8268
matt.larson@cbre-raleigh.com

300 West Hargett Street
Raleigh, North Carolina 27601



Site Plan



| SUITE | TENANT | SIZE |
|-------|--------------------------|-------|
| 1 | A Place at the Table | 2,987 |
| 2 | Cirque de Vol | 2,862 |
| 3 | AVAILABLE 2/1/2022 | 865 |
| 4 | Retro Modern Furnishings | 865 |

© 2021 CB Richard Ellis-Raleigh, LLC, a Delaware limited liability company. This information has been obtained from sources believed reliable. We have not verified it and make no guarantee, warranty or representation about it. Any projections, opinions, assumptions or estimates used are for example only and do not represent the current or future performance of the property. You and your advisors should conduct a careful, independent investigation of the property to determine to your satisfaction the suitability of the property for your needs.

The Hue

300 W Hargett Street | Raleigh, NC 27601

For Lease

