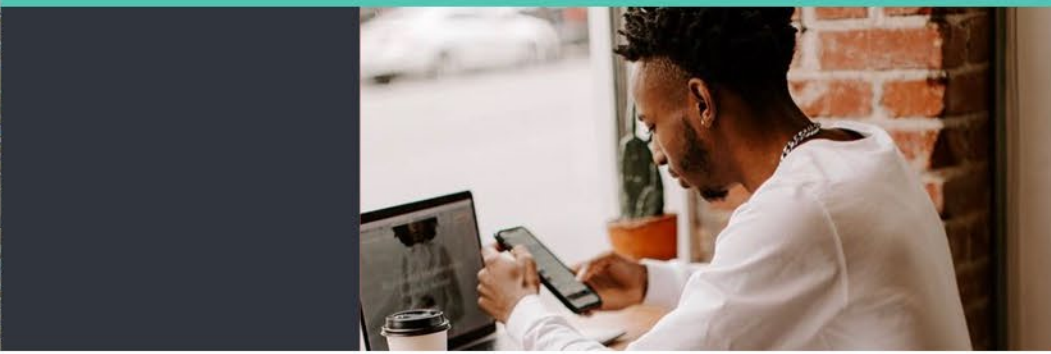


DOWN
TULSA
TOWN
PARTNERSHIP

Center of the Universe/ Boston Avenue Bridge Rehabilitation Project – Above Deck



Downtown Tulsa Partnership

Since 2021, A non-profit established by Downtown stakeholders to advocate for and champion the continued improvement of Downtown Tulsa.

Mission

To champion a prosperous, vibrant, and inclusive Downtown Tulsa.

Vision

Downtown Tulsa: Our center of commerce, culture, and community



Brian Kurtz
President & CEO



Emily Scott
Director, Planning & Vitality

DTP Leading the Private/Public Portion

Bridge project addressed in two parts: Below Deck & Above Deck

- Downtown Tulsa Partnership is leading the above deck repairs to the bridge - a separate scope from the City of Tulsa
- Above deck repairs will be able to begin after the City has completed their scope of work to reinforce and repair the bridge structurally
- The above deck repairs focus on updating the Center of the Universe space into a modern, inviting and comfortable public space with updated lighting, landscaping and amenities.



Progress to Date



Conceptual Design

Current concept heavily impacted by engagement

➤ **Phase I: May 2022 – February 2023:** Concept Design & Community Engagement

Initial call for Ideas: 150+

Focus Groups/Steering Committee: 40+

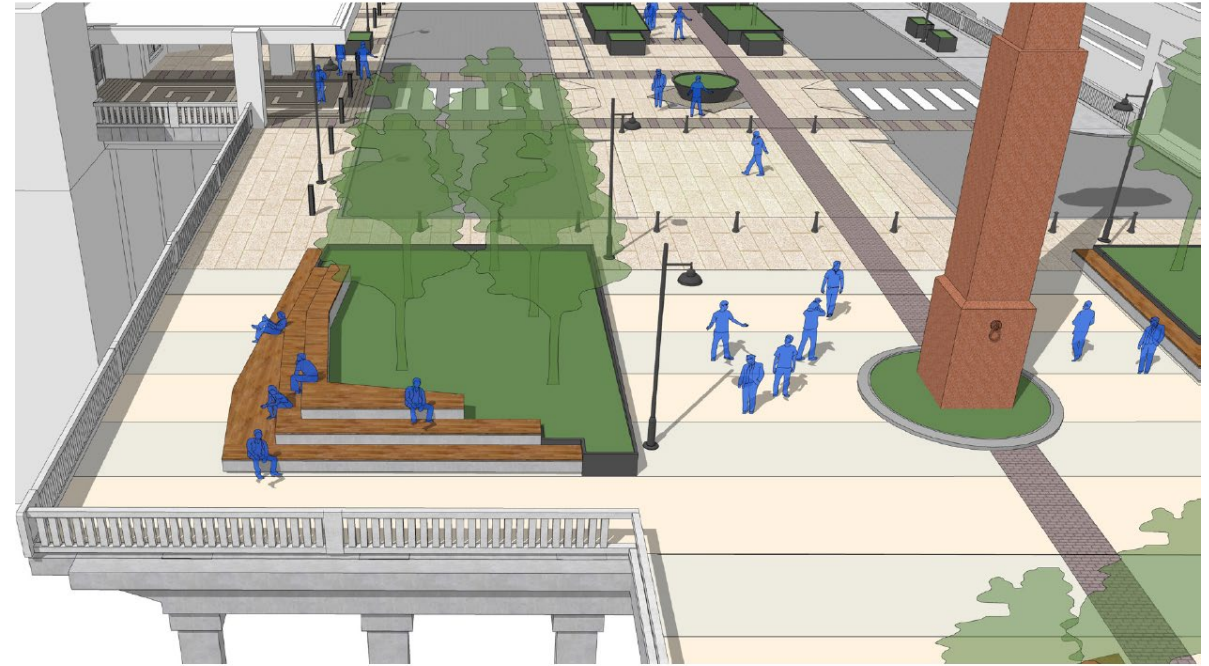
Visual Preference Survey: 900+



Conceptual Design

Current concept heavily impacted by engagement

- **Introduce more amenities**
 - Shade
 - Seating
 - Children's
 - Landscaping
- **Prioritize Pedestrians**
 - Larger, central pathway
 - Reduce auto use on South portion
- **Encourage more active uses**
 - Concerts/ events
 - Food trucks
 - Dining
 - Play



Looking South

Sightseeing/train viewing spaces



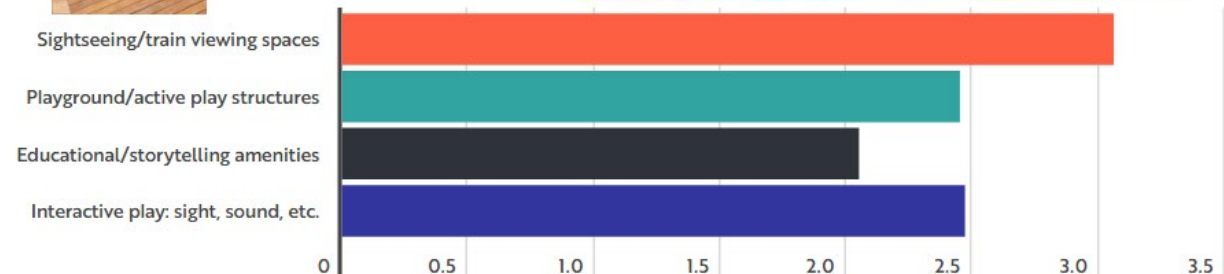
Playground/active play structures



Educational/storytelling amenities



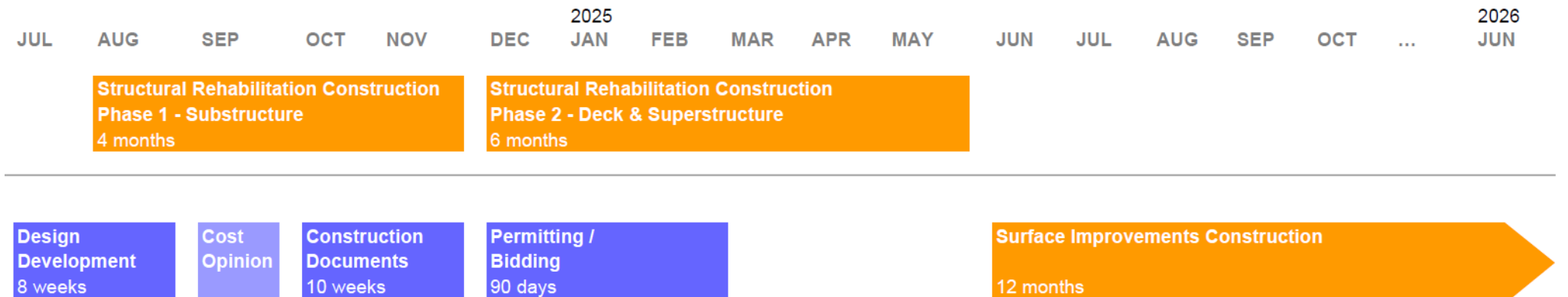
Interactive play: sight, sound, etc.



Current Phase: Design & Construction Document Preparation

DTP completing Phase II now through end 2024

- Finalize construction documents
- Materials selection and costing
- Ongoing coordination with City of Tulsa & Stakeholders along the bridge
- Final Fundraising Effort
- Anticipated construction start date 2025 in coordination with City of Tulsa*



Reimagining Center of the Universe



Reimagining Center of the Universe



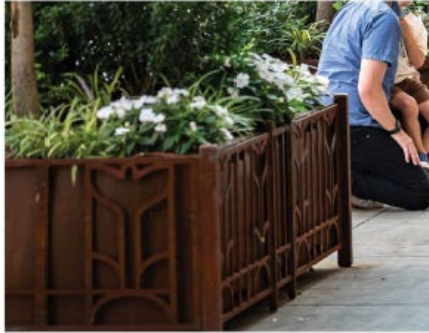


TULSA UNION DEPOT & THE JAZZ DEPOT



A Public Works Project that symbolizes hope for economic recovery. Built in the Art-Deco style, the Depot showcases fine craftsmanship and rich materials.

The building's tenant, the Jazz Depot, is completing an interior renovation that is inspired by the Art Deco style.



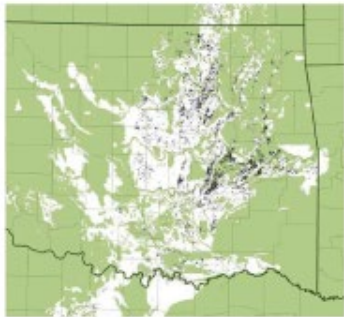
Reimagining Center of the Universe



 CROSS TIMBERS PRAIRIE & DECIDUOUS FOREST



CROSS TIMBERS PAIRIE



CROSS TIMBERS ECOREGION

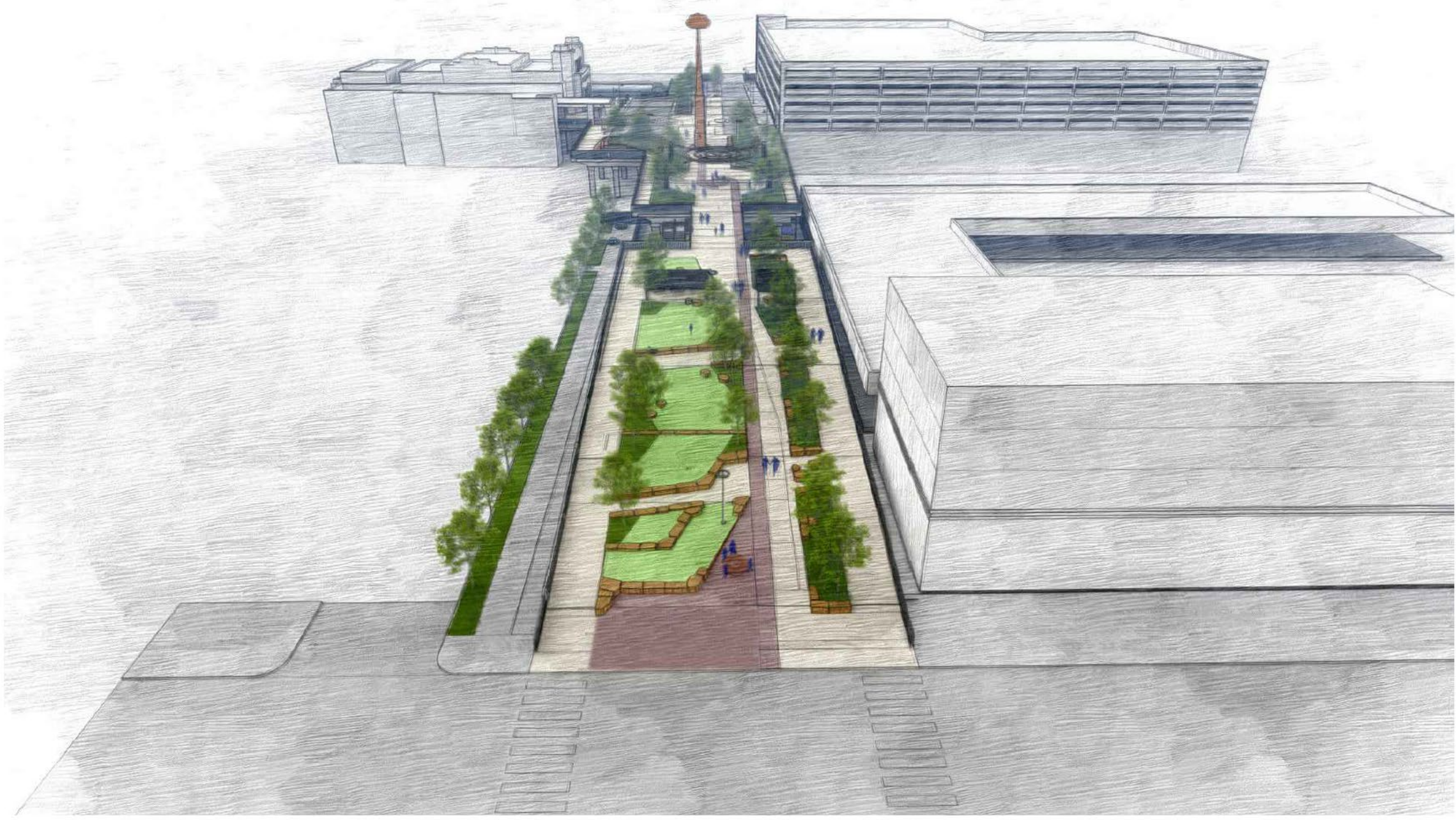
Tulsa is also within Cross Timbers ecoregion showcasing a mosaic of Oak Savannahs, Red Cedar forests and tall prairie grasses.



CROSS TIMBERS DECIDUOUS FOREST



Reimagining Center of the Universe



NORTH APPROACH



OSAGE CUESTAS & THE CENTRAL IRREGULAR PLAINS



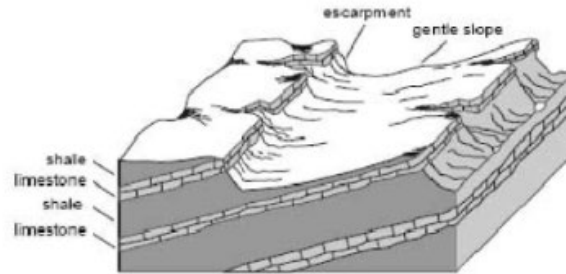
Tulsa's geology lies within the central irregular plains, particularly Osage cuestas, where landforms appear as a strata of undulating plains interbedded with sandstone boulders, shale, and limestone.



TERRACED EVENT LAWN



OKLAHOMA SANDSTONE



TERRACING OF OSAGE CUESTAS IN THE CENTRAL IRREGULAR PLAINS





DOWN
TOWN **TULSA**
 PARTNERSHIP

321 S Boston Ave Suite 104
 Tulsa, OK 74103
 Hello@DowntownTulsa.com
DowntownTulsa.com

  @downtowntulsa
 @downtowntulsaok

