



DESIGN REVIEW BOARD APPLICATION

**Administered by:
Design Review Board**

Property Address*: 371 South Main St

Applicant Name & Mailing Address: Steve Carter P.O. Box 172063 Memphis, TN 38187

Applicant Phone Number: 601-383-6851 Applicant Fax Number: n/a

Property Owner's Name & Mailing Address: Miguel Gomez 6052 Memphis Arlington Rd Bartlett, TN 38135

Property Owner's Phone Number: 901-335-7457

The proposed work consists of the following (check all that apply):

- Sign
- Renovation
- New Building
- Other Exterior Alteration

Project Description:

The facility will be fully renovated and tenant ready for commercial use on the first and second floor. An exterior stair will be added so that the upper and lower floors may be lease by multiple tenants if desired. All doors and windows will be replaced with historically appropriate high quality construction; architectural lighting will be added along South Main and Talbot, brick will be cleaned and repaired in the gentlest means possible, and ghost signage preserved; landscaped rear courtyard will include colored and stamped concrete, a new exterior stair, wrought iron fencing, landscape and irrigation; a concrete parking lot will be added, and the Talbot sidewalk will be replaced; an ADA compliant entrance will be added on Talbot street.

Status of Project:

The project received approval for an \$80,000 exterior improvement grant on 10/21/20, and is not seeking approval through the DMC DRB and Landmarks Commission. Construction is planned to commence in spring of 2021.

A complete application must be submitted to the Development Department no later than two weeks before a regularly scheduled meeting of the Design Review Board. Please contact Abe Lueders at (901)575-0565 or alueders@downtownmemphis.com with any questions and to submit an application.

Owner/Applicant Signature: 

Date: 2/16/21

*Applications for properties that are located within a Landmarks Historic District may require additional approval from the Landmarks Commission. Please contact the Shelby County Division of Planning & Development at (901) 576-6601 for more information.



Katie Flynn
Development Project Manager
Downtown Memphis Commission
114 N. Main Street
Memphis TN 38103

RE: 371 South Main, Exterior Lighting

A2H # 19545

Dear Katie,

Thank you for the opportunity to resubmit our drawings for the design review board's consideration. Since we last were on the agenda (12/2/20) we have completed our construction drawings. The attached drawings are a portion of that set, specifically, those sheets which touch on lighting.

I've noted our response to each of the board's concerns below:

1. Details for mounting the fixtures along Main St. in the existing beam above the storefront entry are needed.

See detail D1/A6.2. The fixture will mount directly to the steel angle over the window. The electrical box will be mounted in the interior face of the wall,

2. More details are needed for the bollard style light on top of the open railed landing - concerns in how that will look.

This light has been removed. We now show a series of step lights recessed into stair risers.
<https://bklighting.com/collaterals/specs/specs-1341.pdf>

3. The elevation on Talbot does not match existing conditions nor does it match light placement on the lighting plan provided.

The Talbot elevations have been completed, and now show accurate transom windows and masonry opening sizes. See drawing D1/A2.1

4. The rear elevation shows discrepancies amongst the height of the roof canopy. Notice the side elevation and the actual height of the roof canopy which show that there is not as much room at the second floor breezeway as the drawing indicates (this matters when considering the Talbot Elevation):

The height of the ceiling at the 2nd floor canopy has been corrected. New enlarged elevations on A2.2, which dimension the light fixture mounting locations, also now show the ceiling accurately.

5. The previous application had the wall sconces mounted to the side of the entry doors along Talbot. The current application shows them mounted above the doors in areas that seem implausible.

Light fixtures along Talbot have been moved back to the side of doors, see A2.1 and A2.2

Thank you again for the opportunity to resubmit. We look forward to further dialogue!

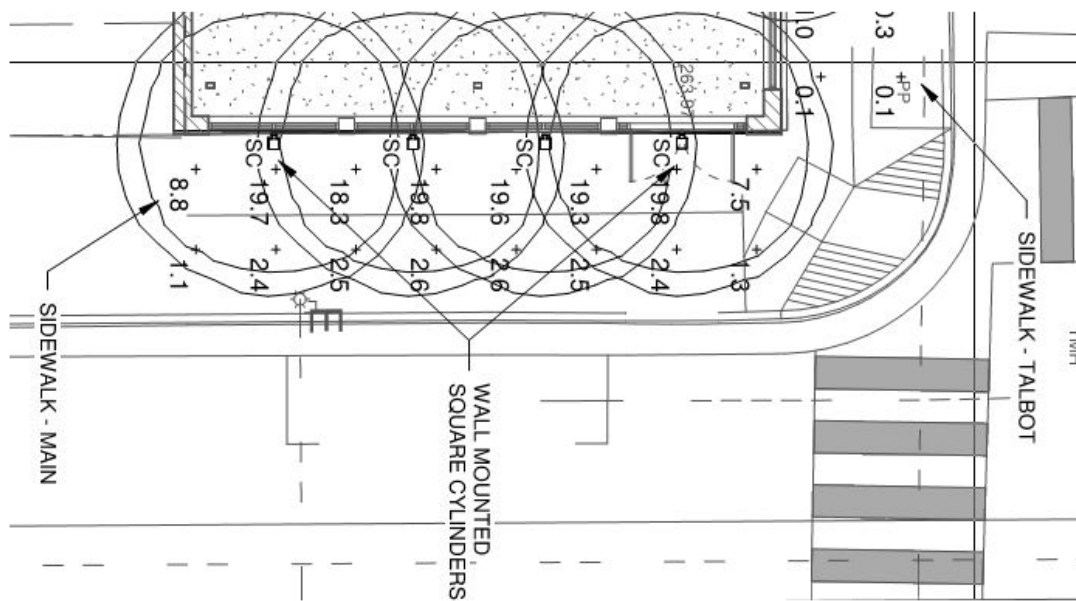
Sincerely,



Brad Schmiedicke AIA
Senior Architect

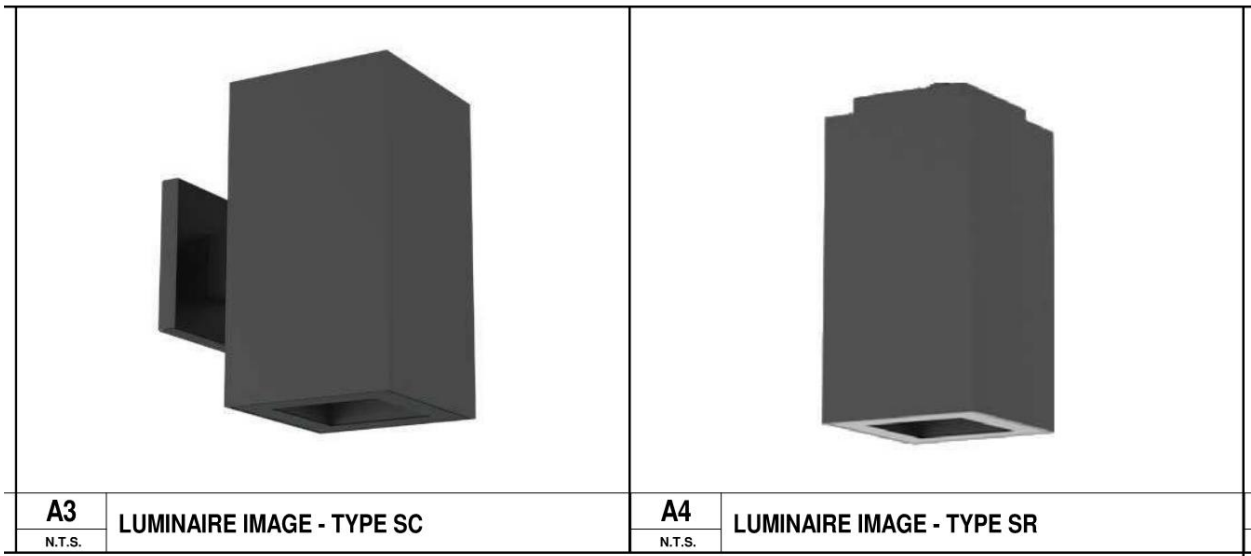
- The fixture itself should not be a feature; rather it should more or less disappear during daylight hours, and let the original façade stand on its own.

This elevation and photometric study below illustrate how this will work:



- Additionally, fixtures on the Talbot façade should match (or compliment) those visible from main street on the north façade. The selected fixture seems appropriate for both facades, whereas a decorative lighting fixture would likely be inappropriate on the Talbot façade.

- Finally, the proposed fixture includes a down-light variant appropriate for the courtyard / rear balcony. Again, they are unobtrusive, and do not seek to draw attention away from the building itself, and present a cohesive lighting package.



Thank you again for the opportunity to better articulate our thoughts on the lighting design. We look forward to further dialogue!

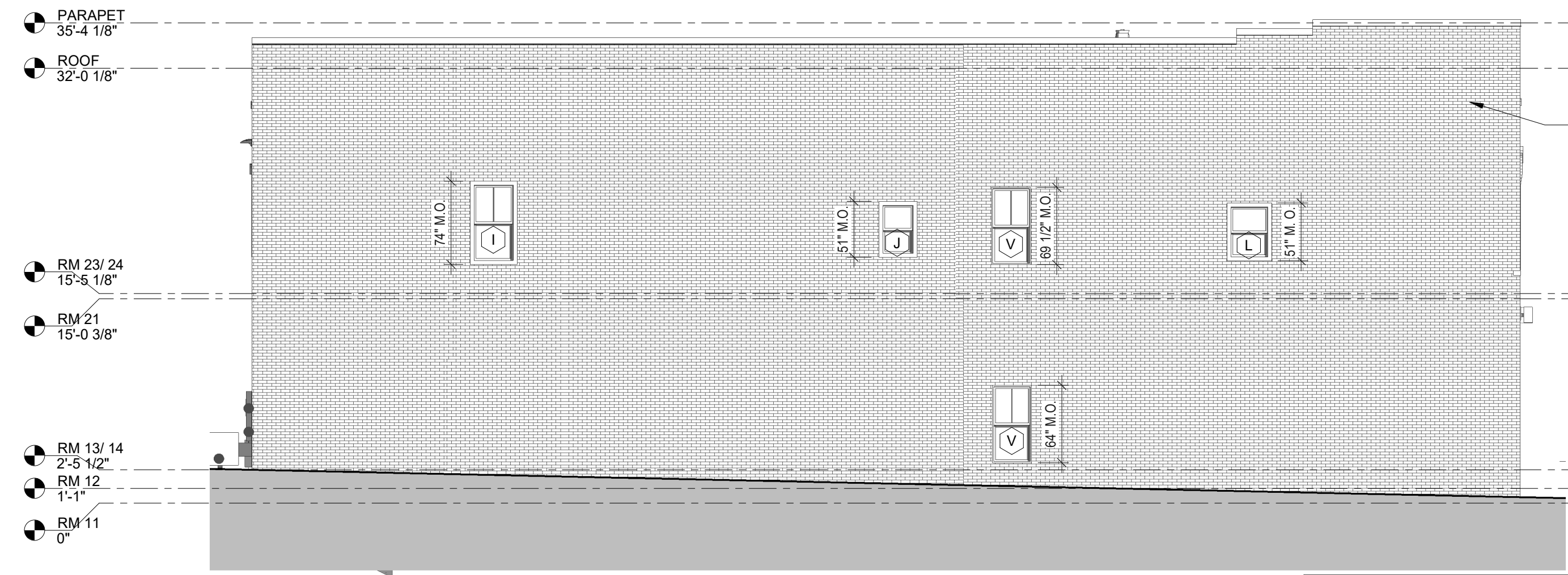
Sincerely,



Brad Schmiedicke AIA
Senior Architect

CC: Katie Flynn – Downtown Memphis Commission

THIS DOCUMENT IS THE PROPERTY OF A2H, INC. AND ALL COMMON LAW, STATUTORY AND OTHER RESERVED RIGHTS SHALL BE RETAINED BY SAME. ANY CHANGES MADE TO THIS DOCUMENT WITHOUT THE EXPRESS WRITTEN CONSENT OF A2H, INC. SHALL BE PROHIBITED AND ARE SUBJECT TO LEGAL PROCEEDINGS. IT IS HEREBY AGREED THAT THE LIABILITY OF ANY CONSULTANT OR CONTRACTOR SHALL BE LIMITED TO THE PROFESSIONAL FEES PAID TO THE CONSULTANT.

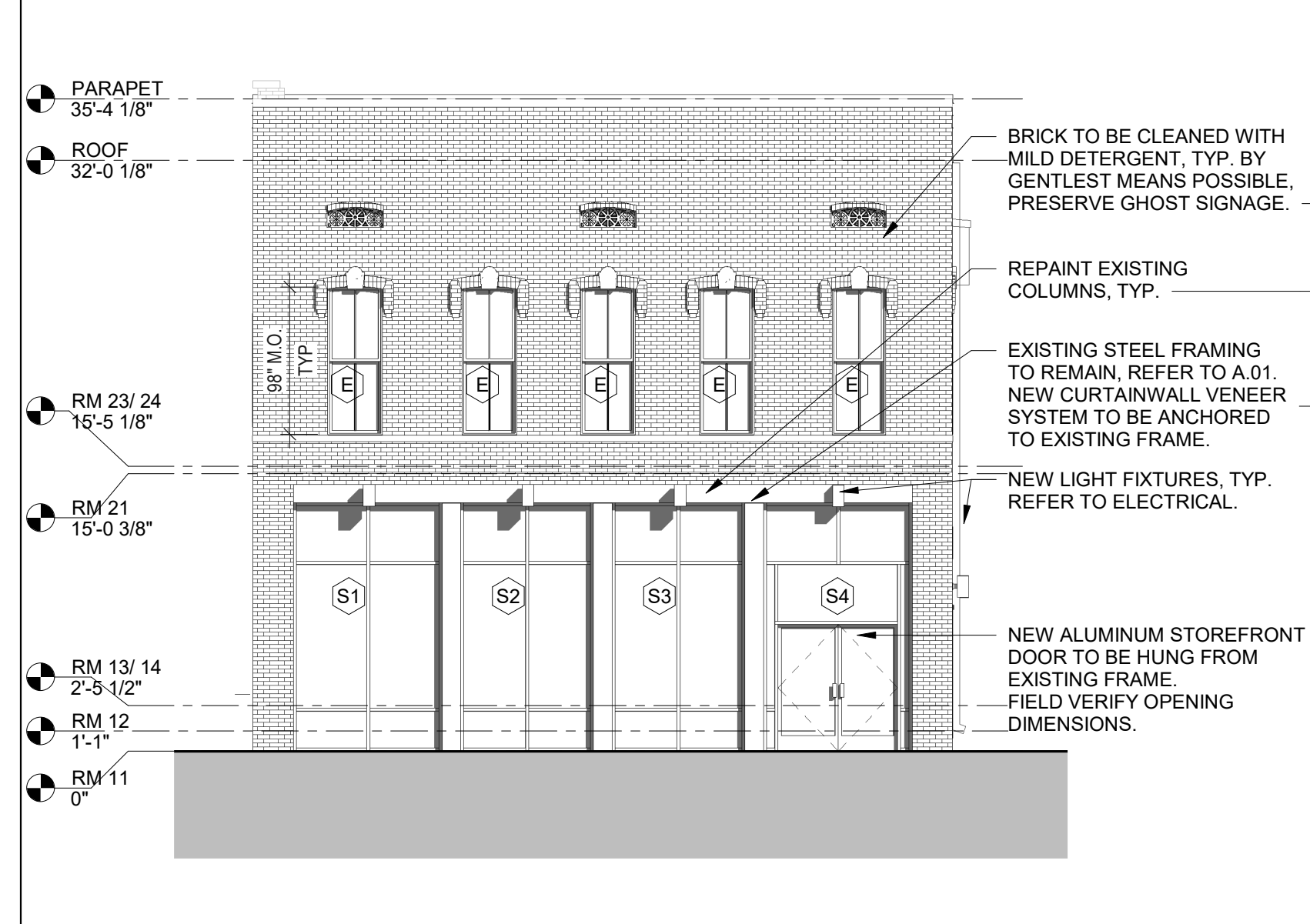


A1 EXTERIOR ELEVATION - SOUTH
1/8" = 1'-0"

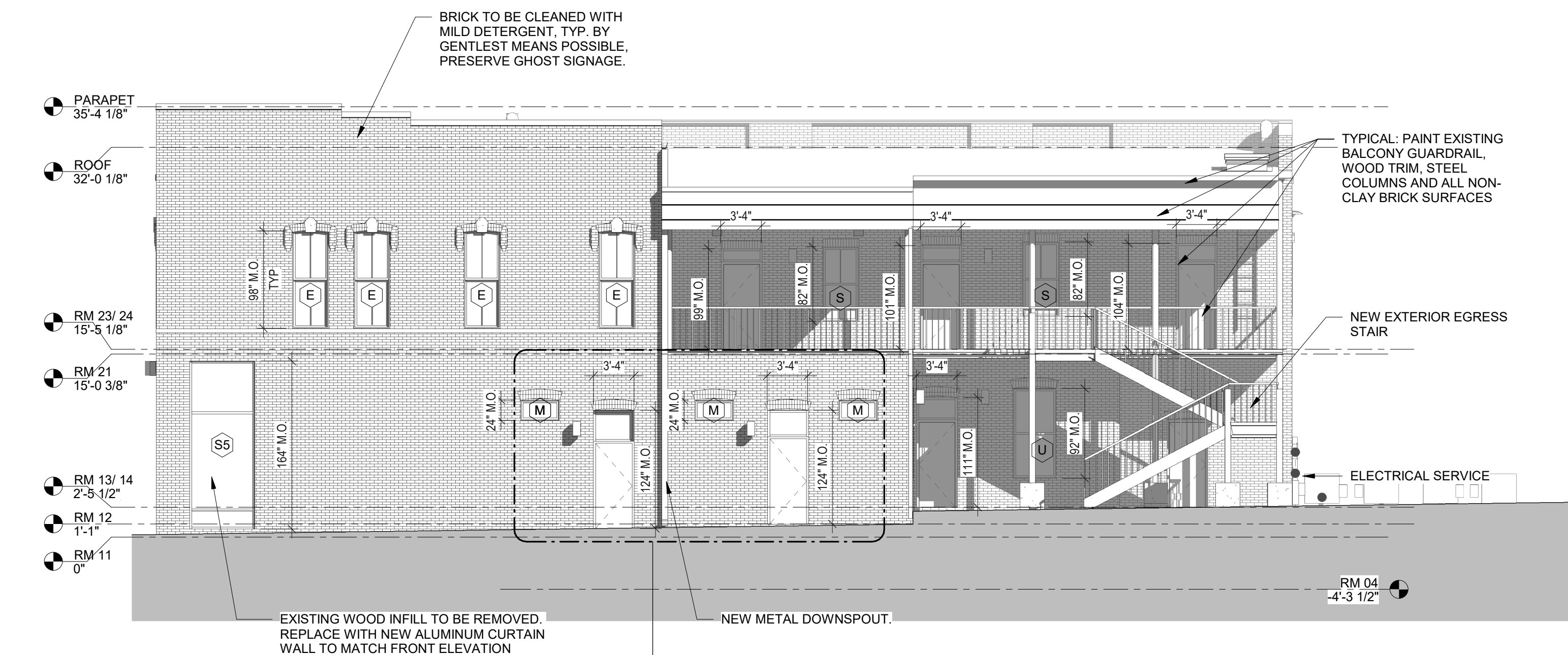
****PLEASE NOTE****
FIELD VERIFY ALL MASONRY OPENINGS BEFORE ORDERING NEW WINDOWS & DOORS. PLEASE SUBMIT SHOW DRAWINGS FOR REVIEW BEFORE BEGINNING ANY WORK



C1 EXTERIOR ELEVATION - WEST
1/8" = 1'-0"



C3 EXTERIOR ELEVATION - EAST
1/8" = 1'-0"



D1 EXTERIOR ELEVATION - NORTH
1/8" = 1'-0"

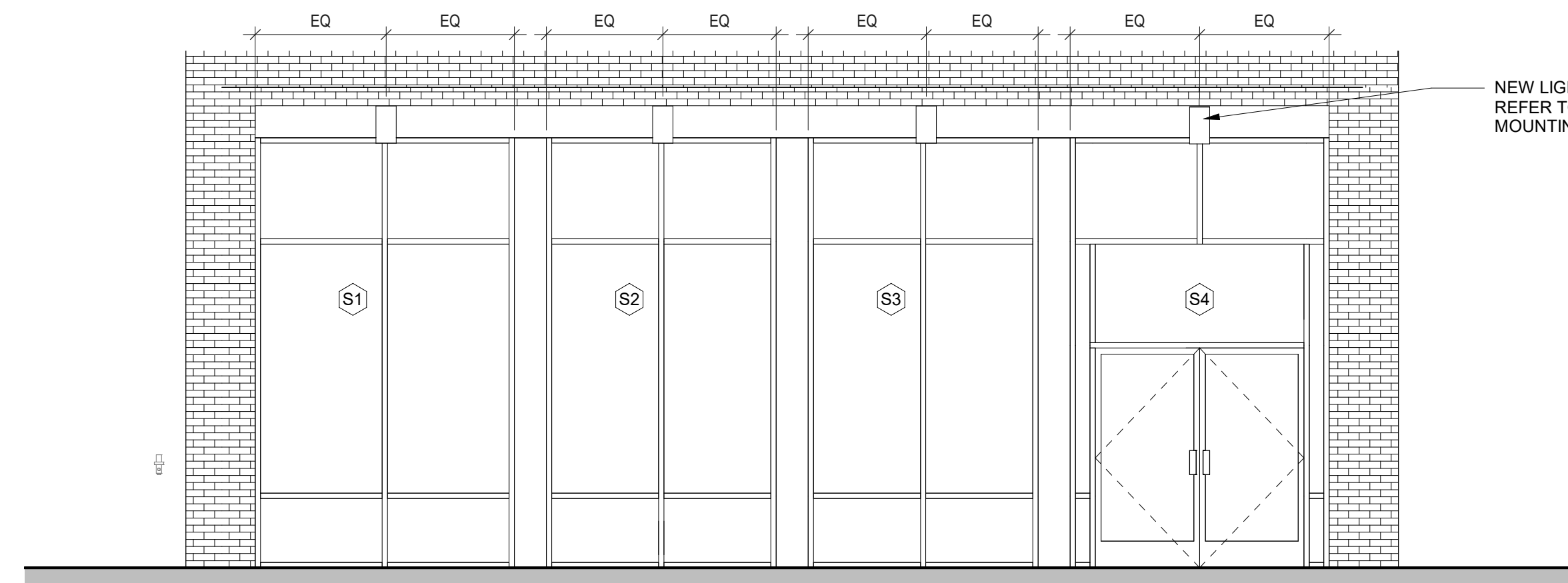


REVISIONS		
1	2/5/2021	ADD #1

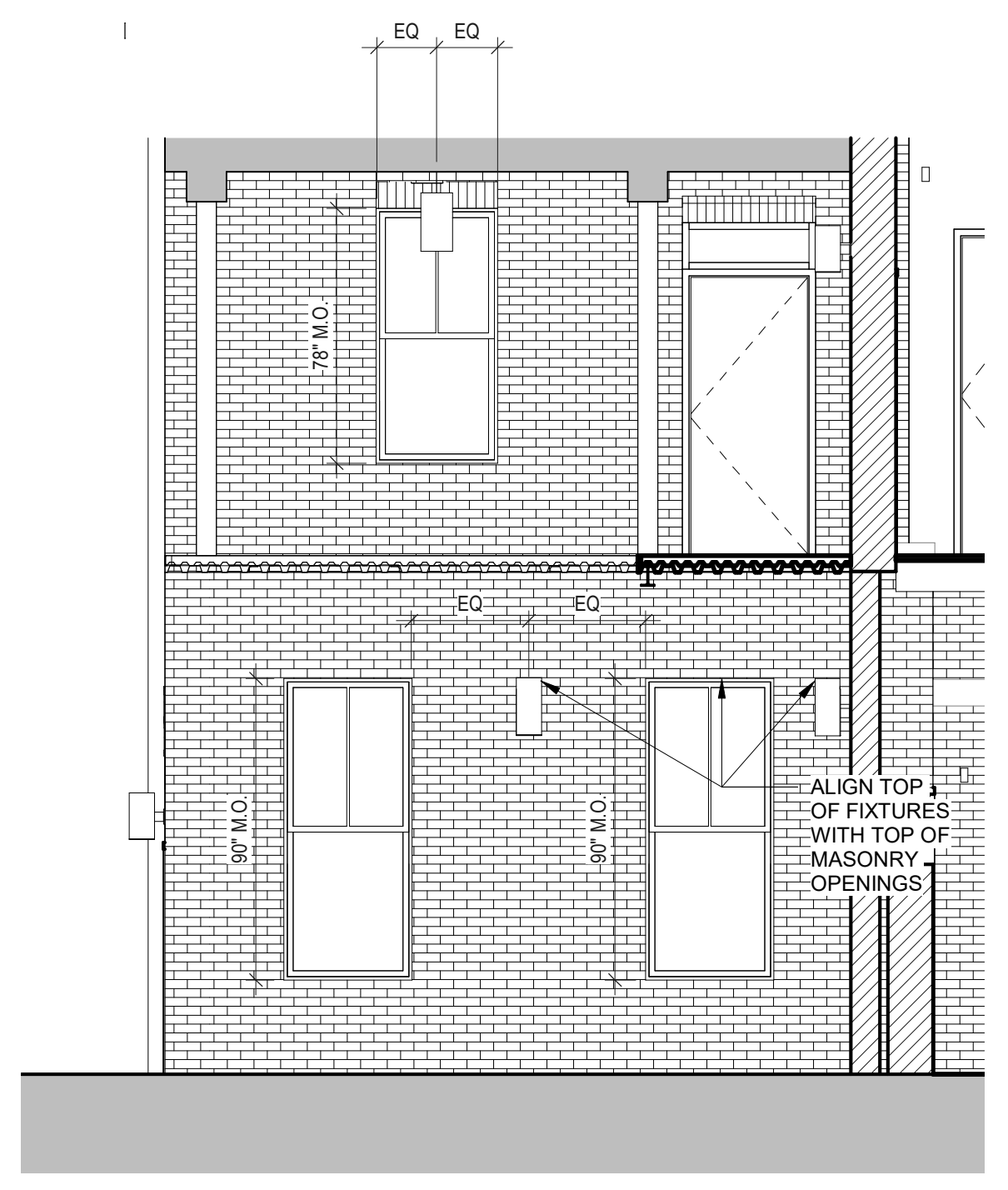
PROJECT NO.	DATE
19545	1/22/21
DRAWN	CHECKED
mjt	Checker

2/15/2021 11:03:58 AM C:\Users\lrad\Documents\19545 - Architectural_broadsheet.dwg

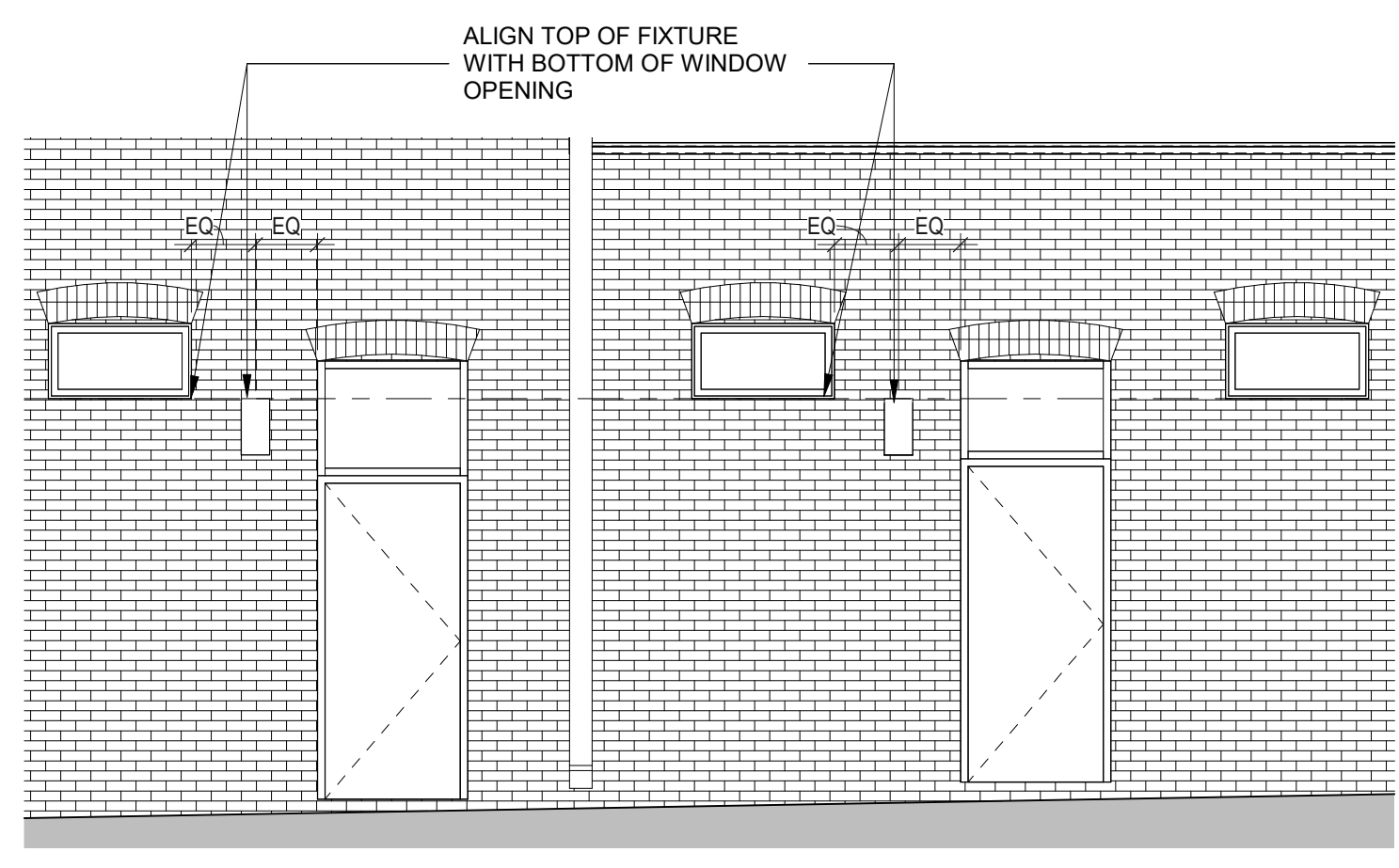
THIS DOCUMENT IS THE PROPERTY OF A2H, INC. AND ALL COMMON LAW, STATUTORY AND OTHER RESERVED RIGHTS SHALL BE RETAINED BY SAME. ANY CHANGES MADE TO THIS DOCUMENT WITHOUT THE EXPRESS WRITTEN CONSENT OF A2H, INC. SHALL BE PROHIBITED AND ARE SUBJECT TO LEGAL PROCEEDINGS. IT IS HEREBY AGREED THAT THE USER SHALL BE RESPONSIBLE FOR OBTAINING ALL NECESSARY PERMITS AND APPROVALS FROM THE CITY.



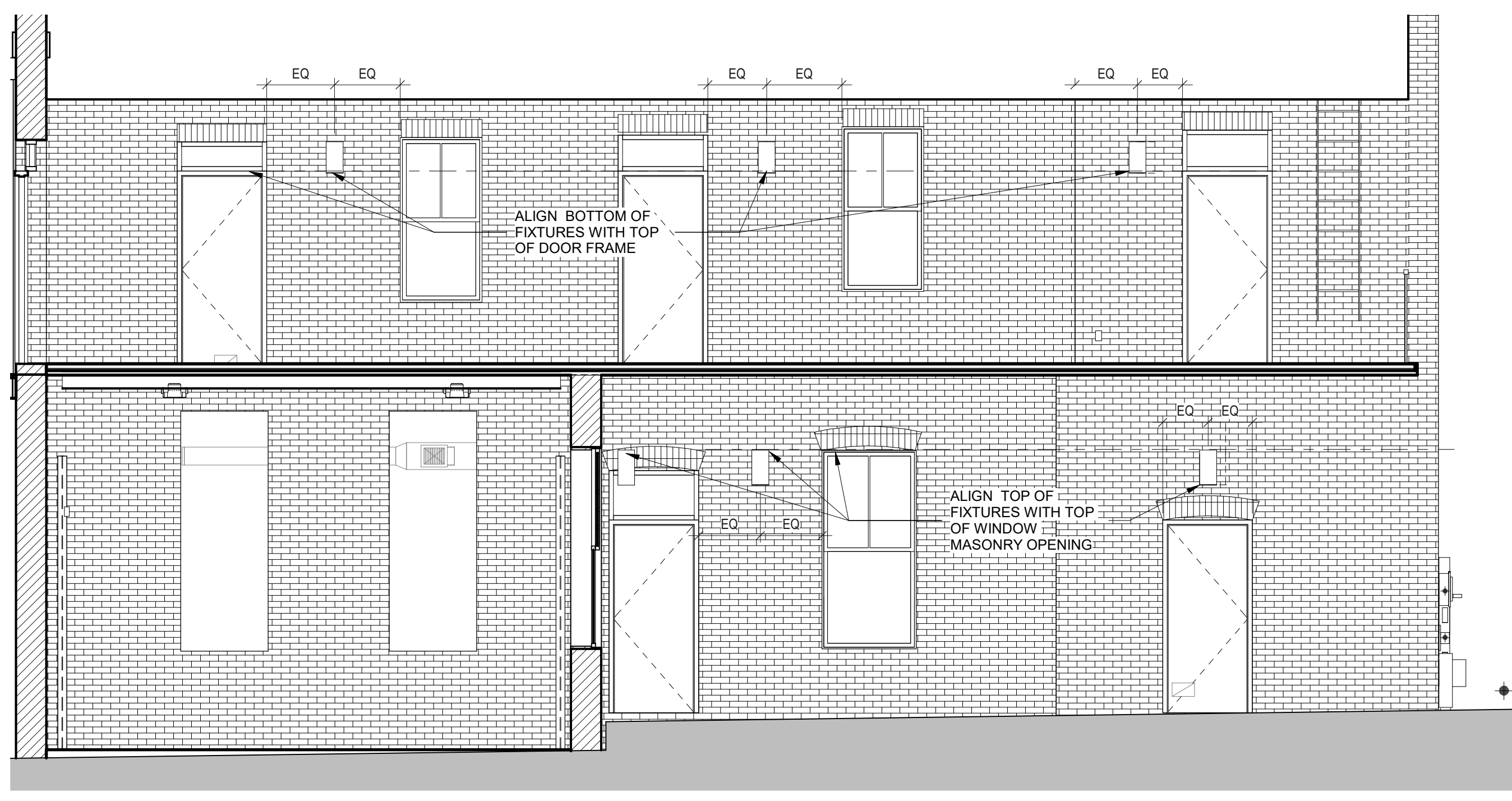
A1 EXTERIOR ELEVATION - MAIN STREET LIGHTING
1/4" = 1'-0"



C1 EXTERIOR ELEVATION - WEST LIGHTING
1/4" = 1'-0"



D1 EXTERIOR ELEVATION - NORTH LIGHTING
1/4" = 1'-0"



D3 EXTERIOR ELEVATION - NORTH - PORCH LIGHTING
1/4" = 1'-0"

2/15/2021 11:03:59 AM C:\Users\lrad\Documents\19545 - Architectural_brad\5EETH.rvt

THIS DOCUMENT IS THE PROPERTY OF A2H, INC. AND ALL COMMON LAW, STATUTORY AND OTHER RESERVED RIGHTS SHALL BE RETAINED BY A2H. ANY CHANGES MADE TO THIS DOCUMENT WITHOUT THE EXPRESS WRITTEN CONSENT OF A2H, INC. SHALL BE PROHIBITED AND ARE SUBJECT TO LOCAL PROSECUTION. I, ENGINEER, WILL MAINTAIN THE INTEGRITY OF ANY SEAL I OBTAIN AS ISSUED BY THE BOARD OF ENGINEERS, ARCHITECTS AND PLANNERS.



1/27/2021 6:53:33 AM
C:\Users\michaels.A2H\Documents\Revit Local\19545 - Architectural_mike8BPACS.rvt

D1 EXTERIOR PERSPECTIVE

A2H ENGINEERS
ARCHITECTS
PLANNERS

A2H, INC.
3009 DAVIES PLANTATION ROAD
LAKELAND, TN 38002
P. 901.372.0404
WWW.A2H.COM



GOMEZ FAMILY

**371 SOUTH MAIN
STREET
REDEVELOPMENT**

**371 SOUTH MAIN STREET,
MEMPHIS, TN 38103**

PERMIT SET

REVISIONS

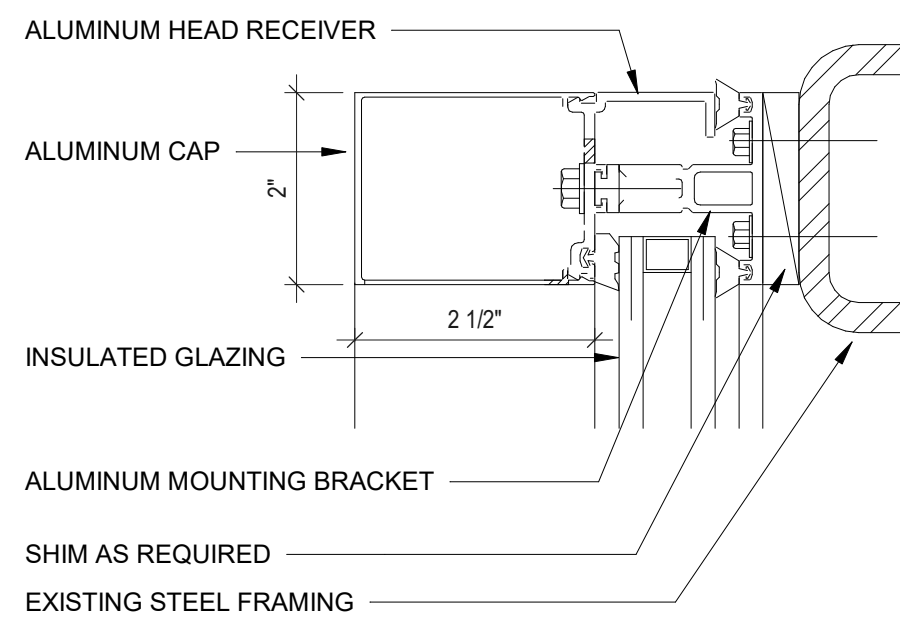
PROJECT NO. 19545	DATE 1/22/21
DRAWN NL	CHECKED BS

PERSPECTIVE

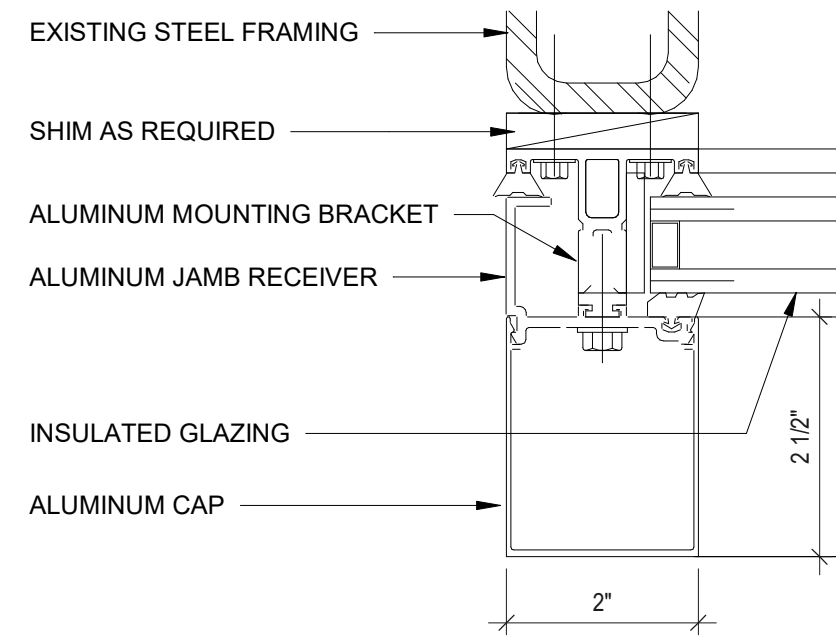
A2.3

THIS DOCUMENT IS THE PROPERTY OF A2H, INC. AND ALL COMMON LAW, STATUTORY AND OTHER RESERVED RIGHTS SHALL BE RETAINED BY SAME. ANY CHANGES MADE TO THIS DOCUMENT WITHOUT THE EXPRESS WRITTEN CONSENT OF A2H, INC. SHALL BE PROHIBITED AND ARE SUBJECT TO LEGAL PROCEEDINGS. IT IS HEREBY AGREED THAT THE USER SHALL BE RESPONSIBLE FOR VERIFYING THE ACCURACY OF THE INFORMATION PROVIDED HEREIN.

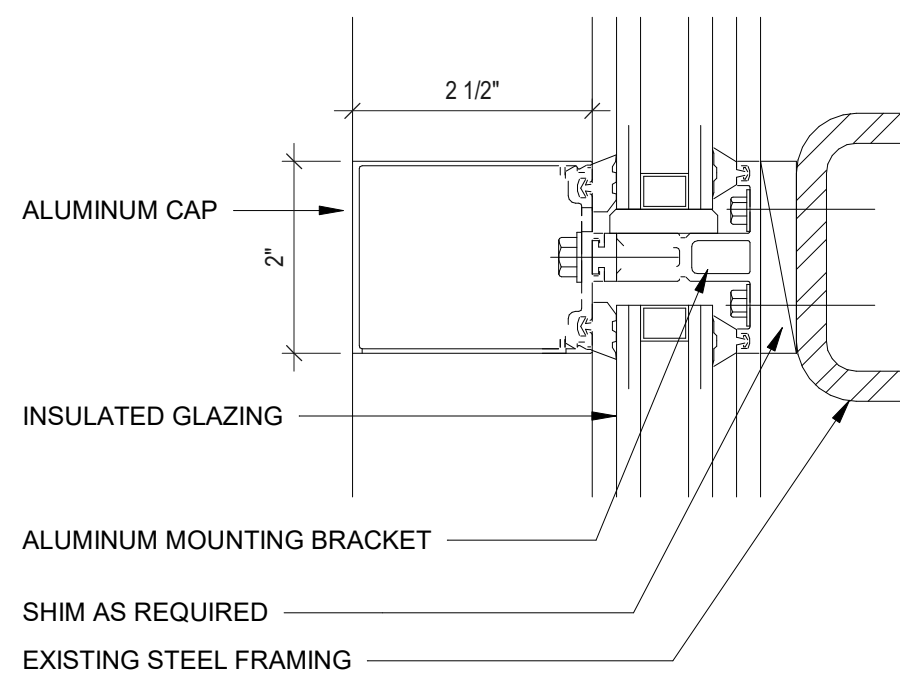
2/15/2021 11:04:01 AM
C:\Users\lrad\Documents\19545 - Architectural\Drawings\SEETH.dwg



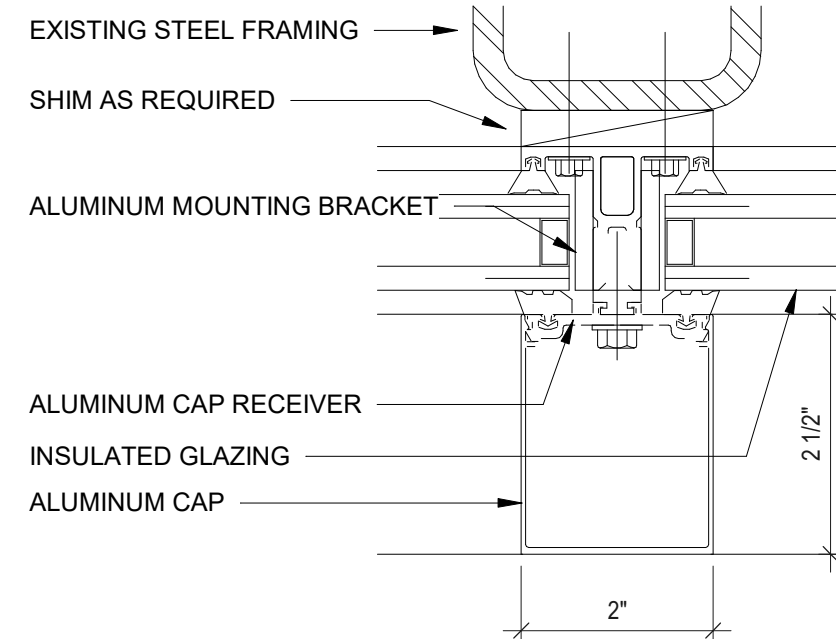
A1 STOREFRONT DETAIL - HEAD
6" = 1'-0"



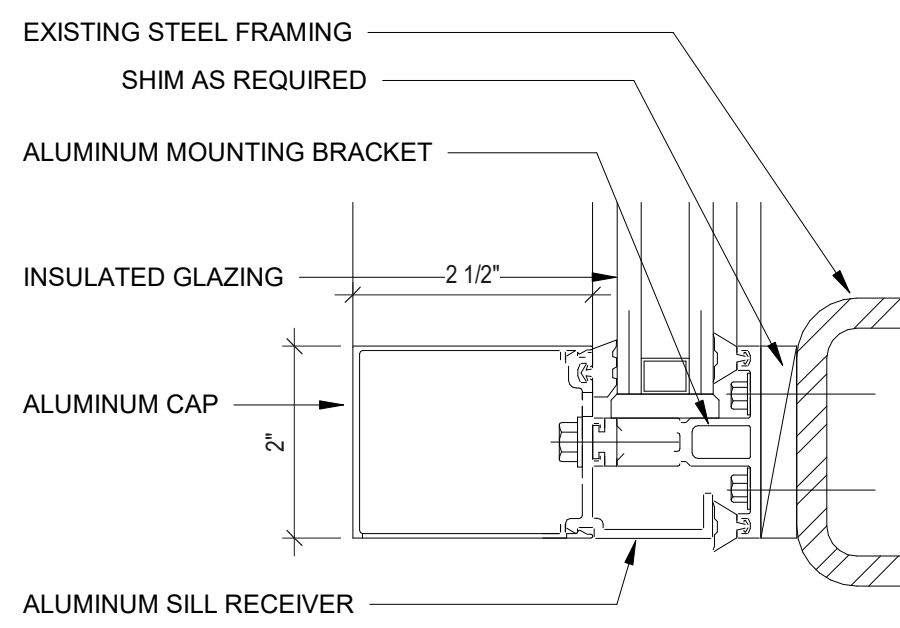
A2 STOREFRONT DETAIL - JAMB
6" = 1'-0"



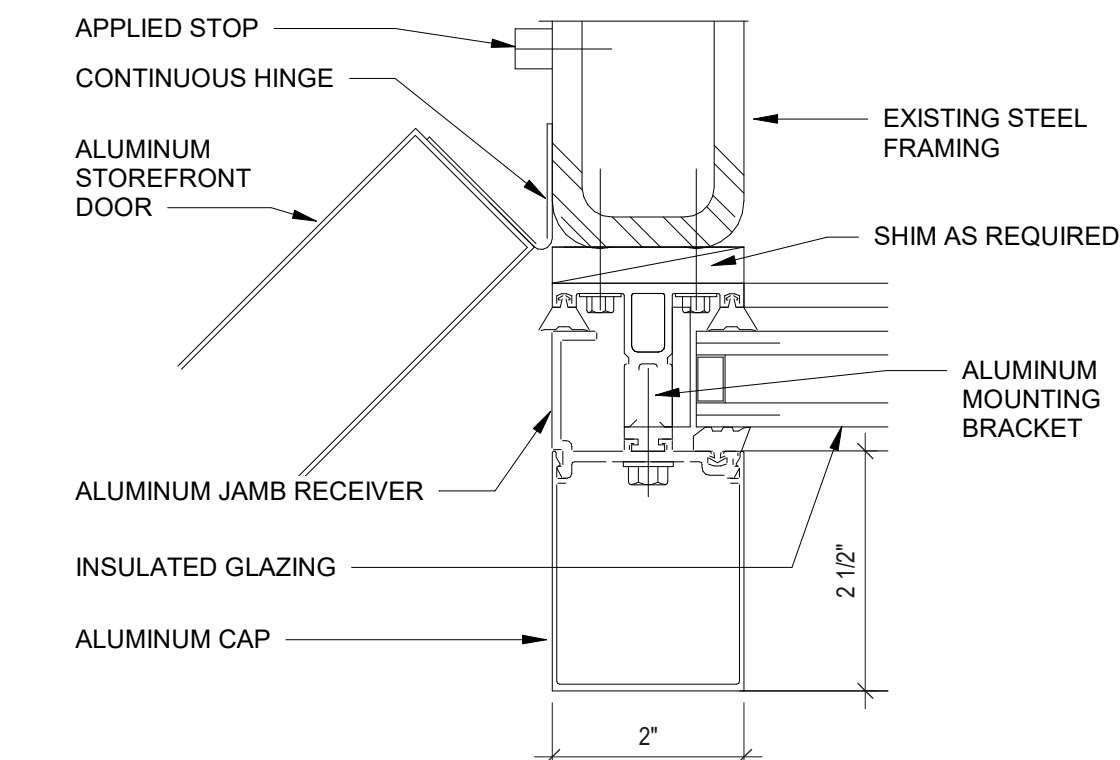
B1 STOREFRONT DETAIL - HORIZONTAL MULLION
6" = 1'-0"



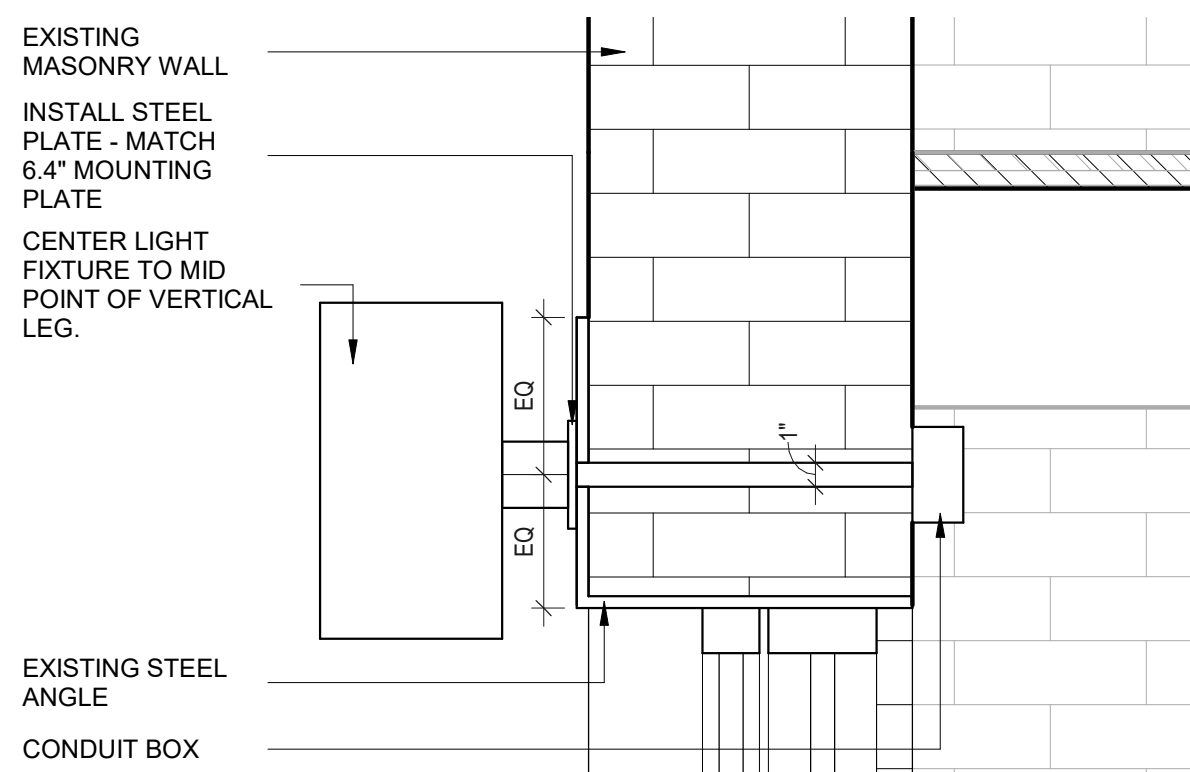
B2 STOREFRONT DETAIL - VERTICAL MULLION
6" = 1'-0"



C1 STOREFRONT DETAIL - SILL
6" = 1'-0"



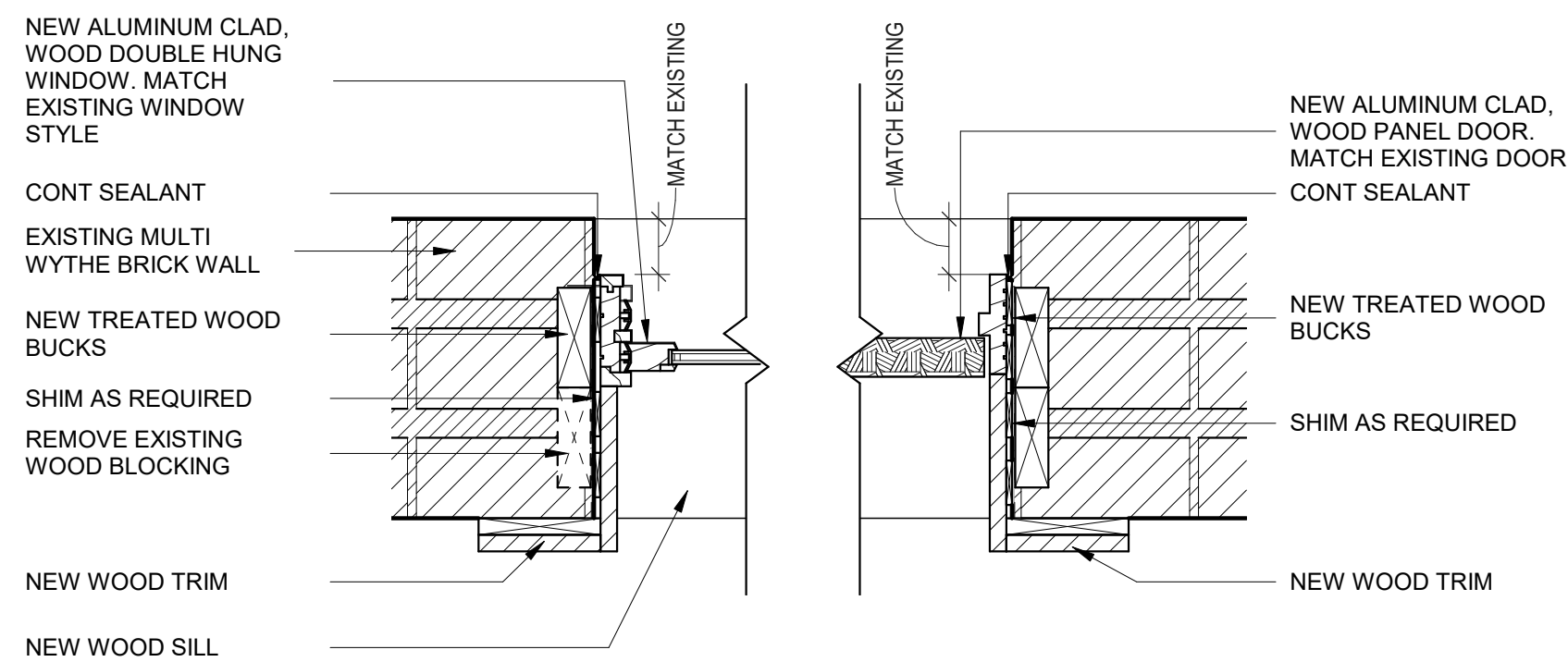
C2 STOREFRONT DETAIL - DOOR JAMB
6" = 1'-0"



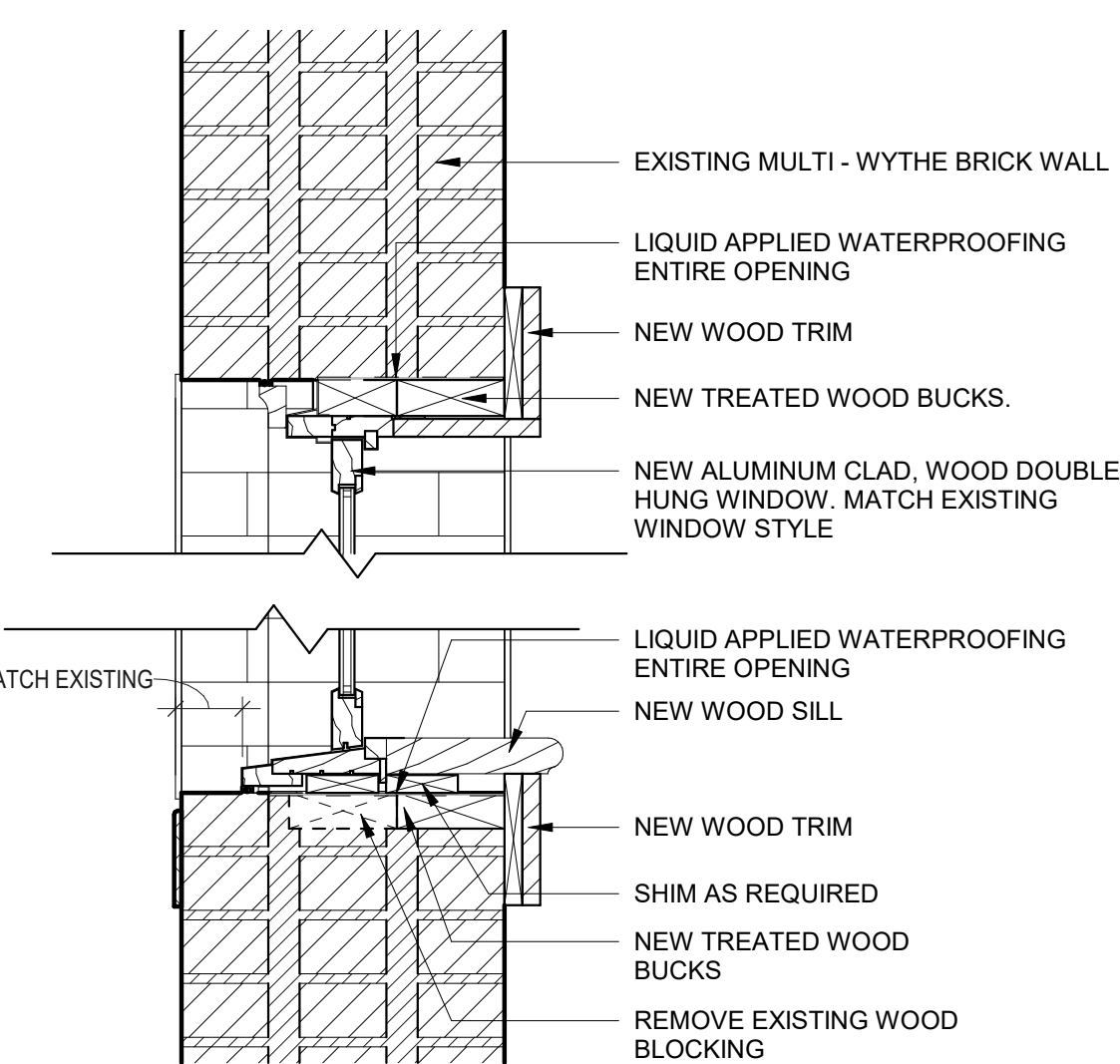
D1 NEW LIGHT FIXTURE MOUNTING DETAIL
1 1/2" = 1'-0"

WINDOWS GLAZING CONTRACTOR / INSTALLER TO PROVIDE MANUFACTURER'S DETAILS SHOWING:

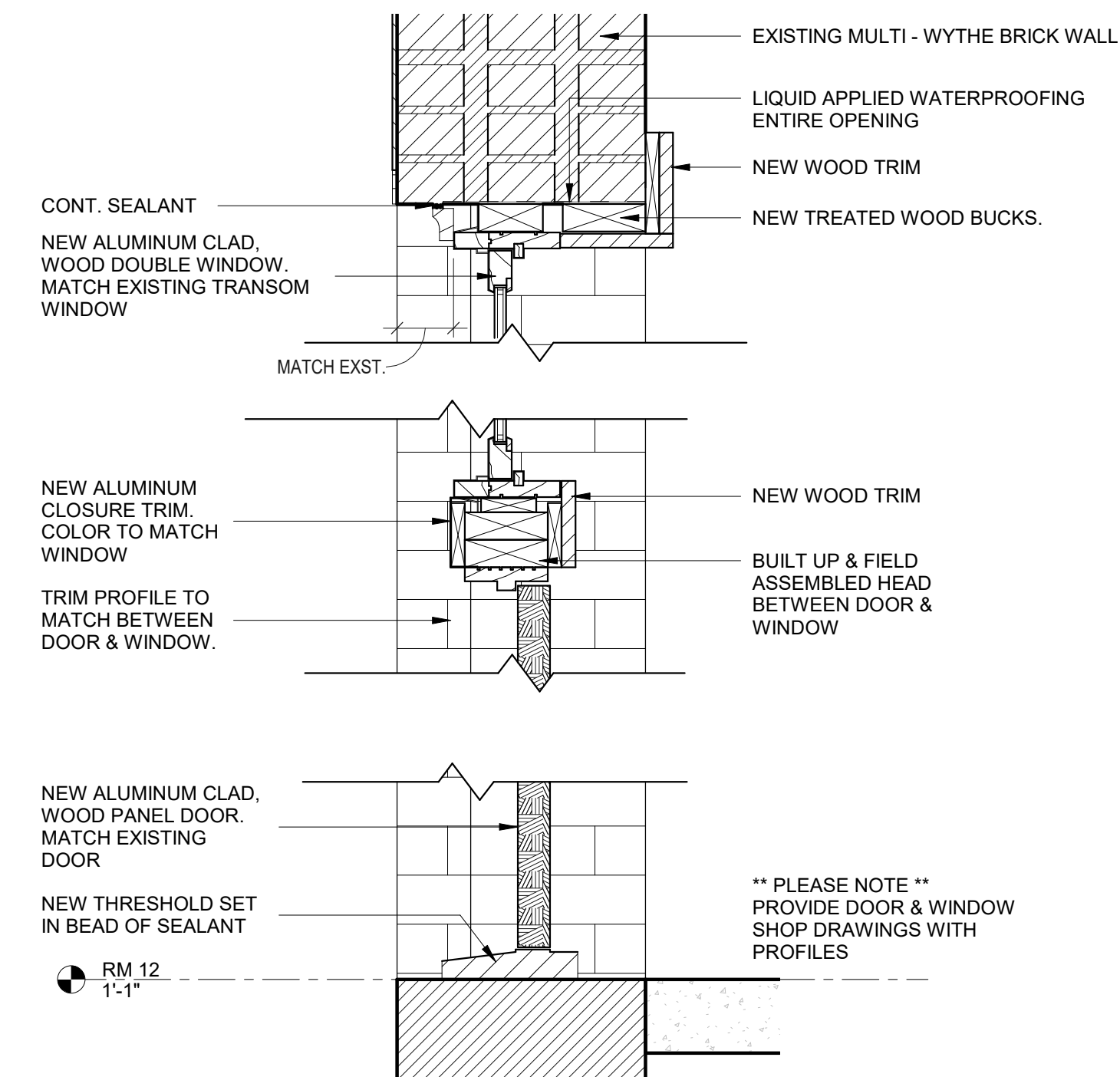
- A. TYPICAL WOODEN WINDOW HEAD, JAMB & SILL DETAIL(S) IN MULTIPLE WYTHE BRICK WALL.
- B. CONTRACTOR IS RESPONSIBLE FOR VERIFYING QUANTITIES AND SIZES OF WINDOWS & DOORS. NOTIFY THE ARCHITECT OF ANY DISCREPANCIES.
- C. DIMENSIONS SHOWN ARE APPROXIMATE. ALL MASONRY OPENING SIZES AND SHAPES TO BE FIELD VERIFIED PRIOR TO BIDDING. OPENINGS MAY NOT BE PLUMB AND MAY INCLUDE UNIQUE FEATURES. SHOP DRAWINGS TO REFLECT WINDOW DIMENSIONS, CUSTOM SIZED TO FILL EXISTING MASONRY OPENING.
- D. TYPICAL WOODEN DOOR HEAD, JAMB & SILL DETAIL(S) IN MULTIPLE WYTHE BRICK WALL.
- E. DOOR HEAD TO TRANSOM DETAIL(S).
- F. WOOD DOOR EXTERIOR THRESHOLD AT LOWER SILL.
- G. ALUMINUM DOOR THRESHOLD ONTO MAIN STREET.
- H. TYPICAL HOLLOW METAL DOOR HEAD, JAMB & SILL DETAIL(S) IN BASEMENT WITH ELEVATED CURB.



B3 WOOD WINDOW & DOOR REPLACEMENT - JAMB
1 1/2" = 1'-0"



D3 WOOD WINDOW REPLACEMENT - VERTICAL
1 1/2" = 1'-0"



D4 WOOD DOOR REPLACEMENT - VERTICAL
1 1/2" = 1'-0"



THIS DOCUMENT IS THE PROPERTY OF A2H, INC. AND ALL COMMON LAW, STATUTORY AND OTHER RESERVED RIGHTS SHALL BE RETAINED BY SAME. ANY CHANGES MADE TO THIS DOCUMENT WITHOUT THE EXPRESS WRITTEN CONSENT OF A2H, INC. SHALL BE PROHIBITED AND ARE SUBJECT TO LEGAL PROCEEDINGS. A2H, INC. SHALL BE RESPONSIBLE FOR THE DESIGN AND CONSTRUCTION OF THE PROJECT AND SHALL NOT BE RESPONSIBLE FOR THE DESIGN OR CONSTRUCTION OF ANY OTHER PROJECTS.



A1
N.T.S. LUMINAIRE IMAGE - TYPE SA



A2
N.T.S. LUMINAIRE IMAGE - TYPE SB



A3
N.T.S. LUMINAIRE IMAGE - TYPE SC

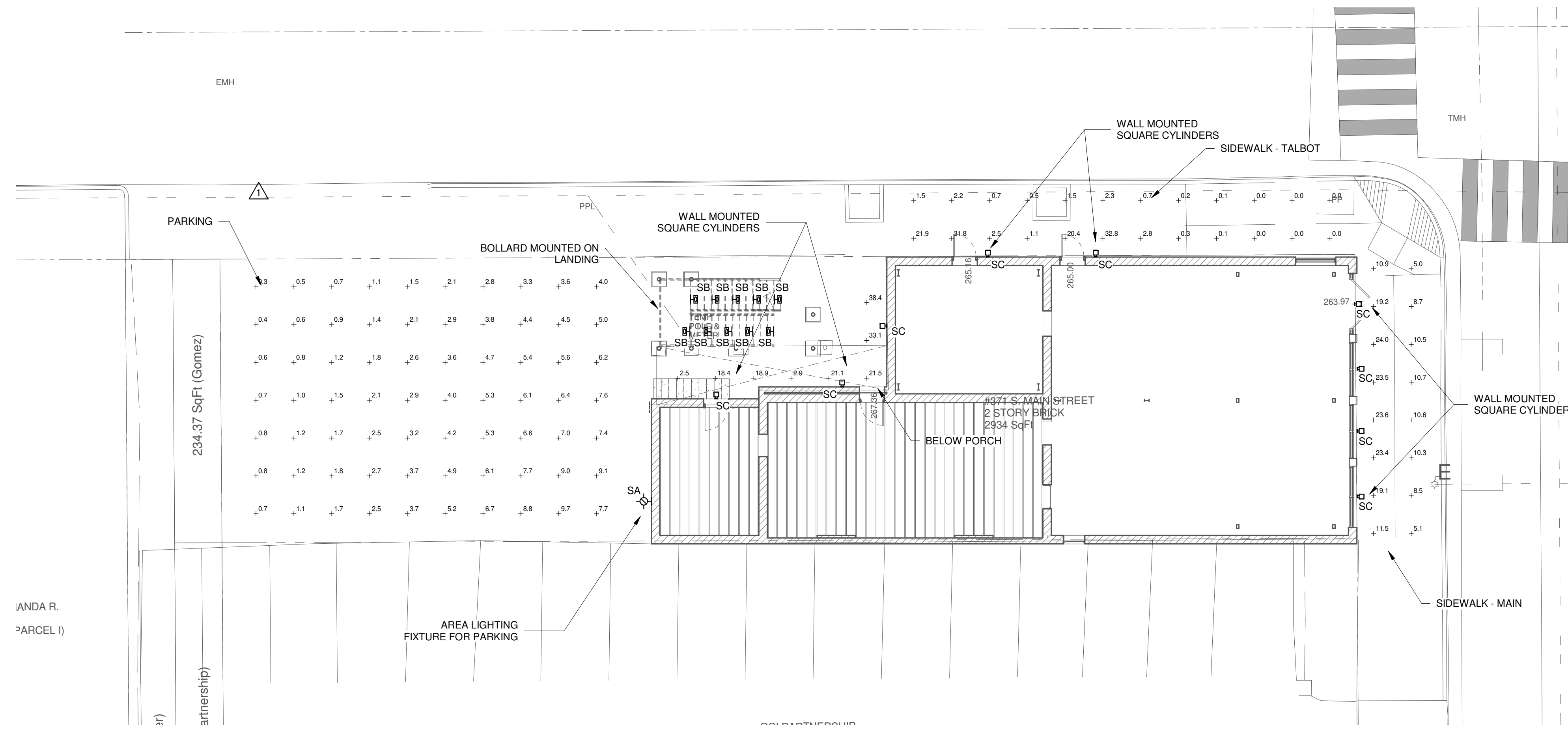


A4
N.T.S. LUMINAIRE IMAGE - TYPE SR

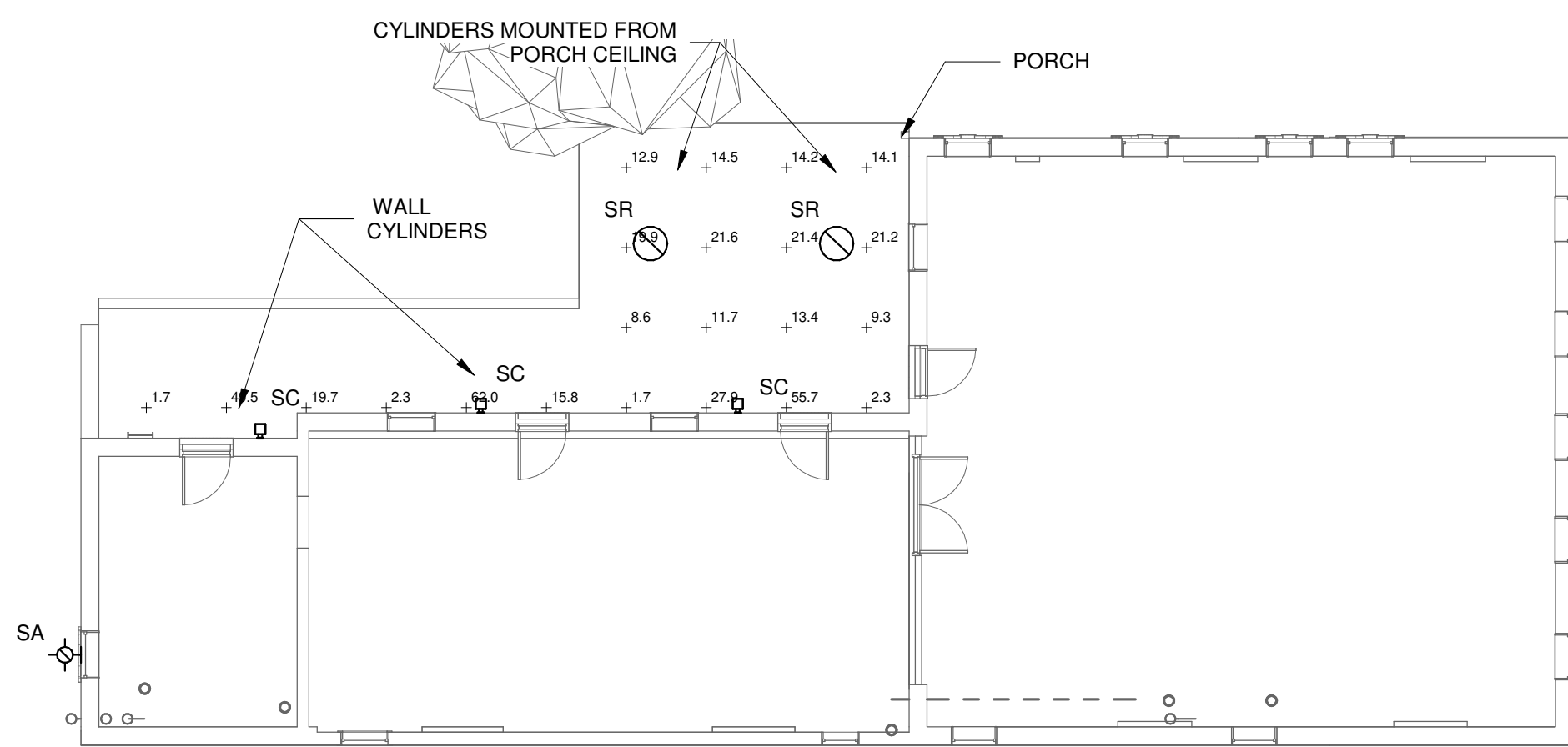
GENERAL NOTES

1. EXTERIOR LUMINAIRE LUMEN OUTPUT TO BE ENOUGH TO SEE ABOVE AMBIENT STREET LIGHTING. STREET LIGHTING WILL ADD ADDITIONAL AMBIENT LIGHTING IN THE PARKING AREAS AND ALONG THE SIDEWALK.
2. LIGHT COLOR TO BE 3000K - A WARM COLOR SLIGHTLY WHITER THAN INCANDESCENT.

A5
N.T.S. SITE LIGHTING NOTES



C1
1" = 10'-0" SITE LIGHTING PLAN



D1
1" = 10'-0" SITE LIGHTING SECOND FLOOR PLAN

EXTERIOR LUMINAIRE SCHEDULE							
TYPE	DESCRIPTION	MANUFACTURER	MODEL	LUMENS / CCT	WATTS	MOUNTING	REMARKS
SA	EXTERIOR RATED WALL PACK WITH MOTION SENSOR / PHOTOCELL STEP LIGHT, LED, WET LOCATION, 0-10V DIM	COOPER LIGHTING	GLEON-AF-05-LED-E1-SL4-8030-MS-DIM-L20	3000K	166 VA	WALL MOUNT 24" AFG	TIME SWITCH, EM - CONNECT TO INVERTER
SB	6" SQUARE CYLINDER - WET LOCATION - WALL MOUNT, 0-10V DIM	B-K LIGHTING	S-YK-D-LED-A3080-BLP-H-SD-010-MT	314LM 3000K	10 VA	UNDER TREAD	TIME SWITCH, EM - CONNECT TO INVERTER
SC	6" SQUARE CYLINDER - WET LOCATION - WALL MOUNT, 0-10V DIM	SPECTRUM LIGHTING	C0611SQXT 20L 30K XW DS10X EX WL TPT GL MB	30K	22 VA	SEE ELEVATIONS	TIME SWITCH, EM - CONNECT TO INVERTER
SR	6" SQUARE CYLINDER - WET LOCATION - CEILING MOUNT 0-10V DIM	SPECTRUM LIGHTING	C0611SQXT 20L 30K WD EX WL TPT SO SM MB	30K	22 VA	SURFACE MOUNT	TIME SWITCH, EM - CONNECT TO INVERTER

D3
N.T.S. EXTERIOR LUMINAIRE SCHEDULE

GOMEZ FAMILY

371 SOUTH MAIN STREET REDEVELOPMENT

371 SOUTH MAIN STREET, MEMPHIS, TN 38103

PERMIT SET

REVISIONS
1 02-05-21 ADD #1

PROJECT NO. 19545 DATE 1/22/21
DRAWN LaMountain CHECKED Schmiedicke

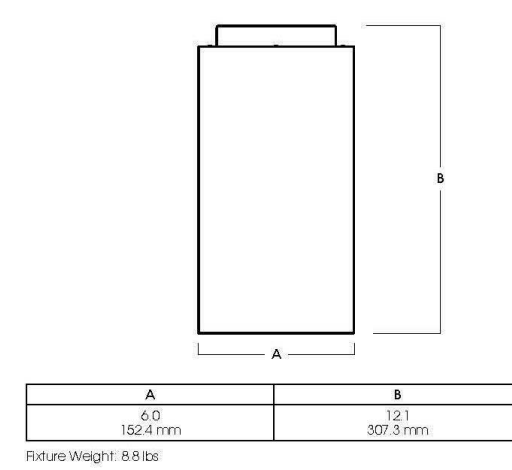
SITE LIGHTING CONCEPT PLAN

E0.2

2/11/2021 5:45:27 PM C:\Users\cody\Documents\Revit Local Models\19545 - Electrical_Lody@a2h.com.rvt

THIS DOCUMENT IS THE PROPERTY OF A2H, INC. AND ALL COMMON LAW, STATUTORY AND OTHER RESERVED RIGHTS SHALL BE RETAINED BY SAME. ANY CHANGES MADE TO THIS DOCUMENT WITHOUT THE EXPRESS WRITTEN CONSENT OF A2H, INC. SHALL BE PROHIBITED AND WE ARE SUBJECT TO LEGAL PROCEEDINGS TO ENFORCE THESE RIGHTS. THIS DOCUMENT IS THE PROPERTY OF A2H, INC. AND ALL COMMON LAW, STATUTORY AND OTHER RESERVED RIGHTS SHALL BE RETAINED BY SAME.

TYPE SR



Riskin Weight: 0.85lb

6" SQUARE DIRECT FOCUSED ILLUMINATION



CO611SQXT - CEILING MOUNT

APPLICATION
#7 squares x 11" high cylinder luminaire for accent and focused illumination.

FEATURES
Spectrum's Cylinder series provides traditional architectural style with high performance and energy efficient illumination. Rugged design with flexible mounting, finish and LED options make these extremely versatile fixtures. Quick change LED module with interchangeable optics for job site flexibility and future upgrades.

FINISH
Multi-stage polyester powder-coat process applied on our dedicated paint lines. See mounting and color pages for standard finishes. All exposed materials are chrome plated to resist corrosion.

ELECTRONICS
LED system features Xicato LED module with proprietary phosphor technology that provides consistent stable color with CCT control of +/- 100K over life of the light engine. Base CR is 85 with 2-step MacAdam Ellipse binning. High CR is 98 with 1.2-step MacAdam Ellipse binning. Variety of electronic: 120V/277V and dimming drivers.

CONSTRUCTION
Fabricated seamless aluminum fixture housing. Specular primary reflector provides high efficiency illumination. Stainless steel hardware with galvanized brackets to resist corrosion. Die-cast aluminum trim.

CODE COMPLIANCE
BAA compliant. ETL certified to meet US and Canadian standards. Suitable for dry or damp locations. Wet Location Option. Manufactured and tested to UL standards No. 1599-0750.

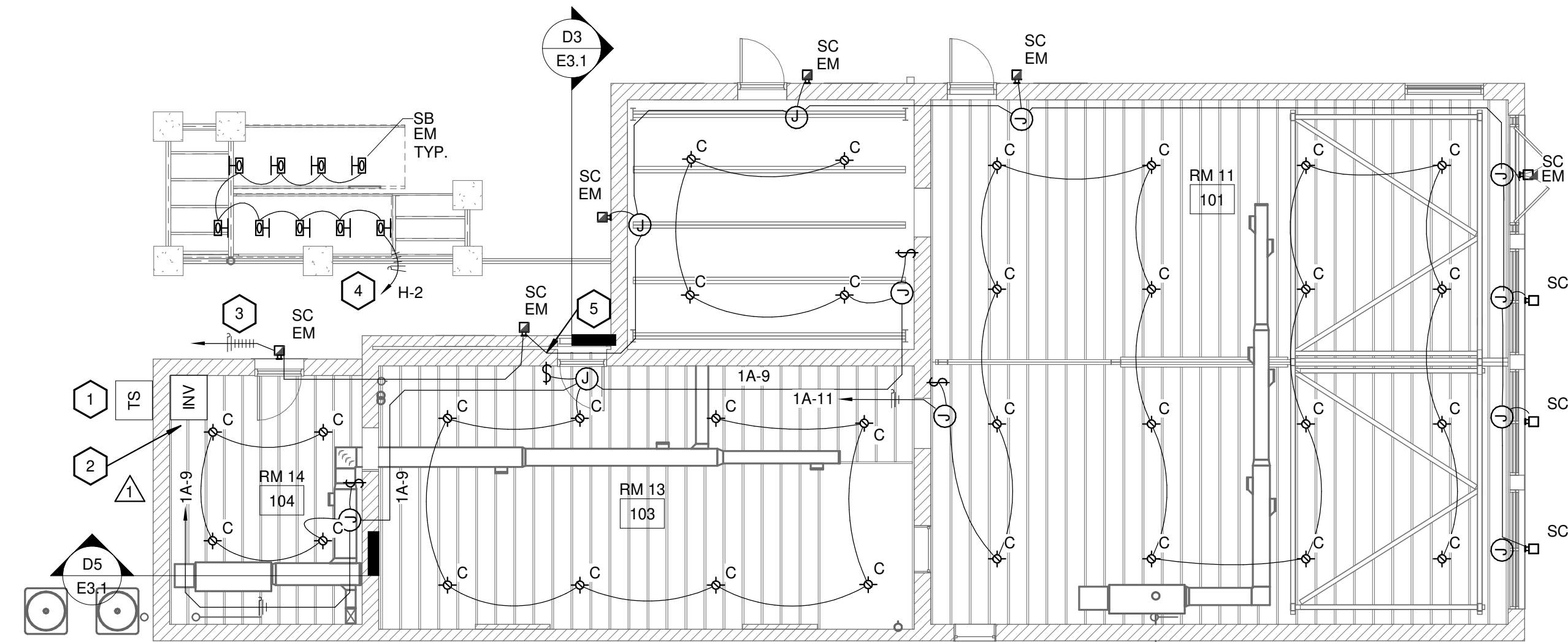
LUMENS / WATTS DATA			
PAR NUMBER	FOCUS	LED DRIVER	SYSTEM WATTS
CO611SQXTL	1000	900	91.0
CO611SQXTS	1300	1227	133.0
CO611SQXTB	3000	1887	217.0
CO611SQXTX	3000	2881	316.0

SERIES	LUMENS ¹	CCT	OPTICS	DRIVER / DIMMING ²	OPTIONS ³	TRIM	MOUNTING ⁴	FINISH ⁵
CO611SQXT	10L 1000lm 13L 1300lm 30L 3000lm	83 CRI 2700-3000 3000-3500	XN 12" ND 21" MD 31"	EX Electronic Driver ND 21" MD 31"	WV Wet Location TCY ⁶ Same Color as Fixture CC Custom Color	HM ⁷ Hang Straight HM ⁸ Hang Straight ATM ⁹ Hang Straight CC Custom Color	WM ¹⁰ Wall Mount WM ¹¹ Wall Mount EM ¹² Emergency Battery EMEN ¹³ Emergency Battery with Enclosure	MW ¹⁴ Matte White MW ¹⁵ Matte White PT ¹⁶ Platinum Silver MB ¹⁷ Matte Black CC Custom Color

EXAMPLE: CO611SQXT13L35KNDXPTGLHM12MW

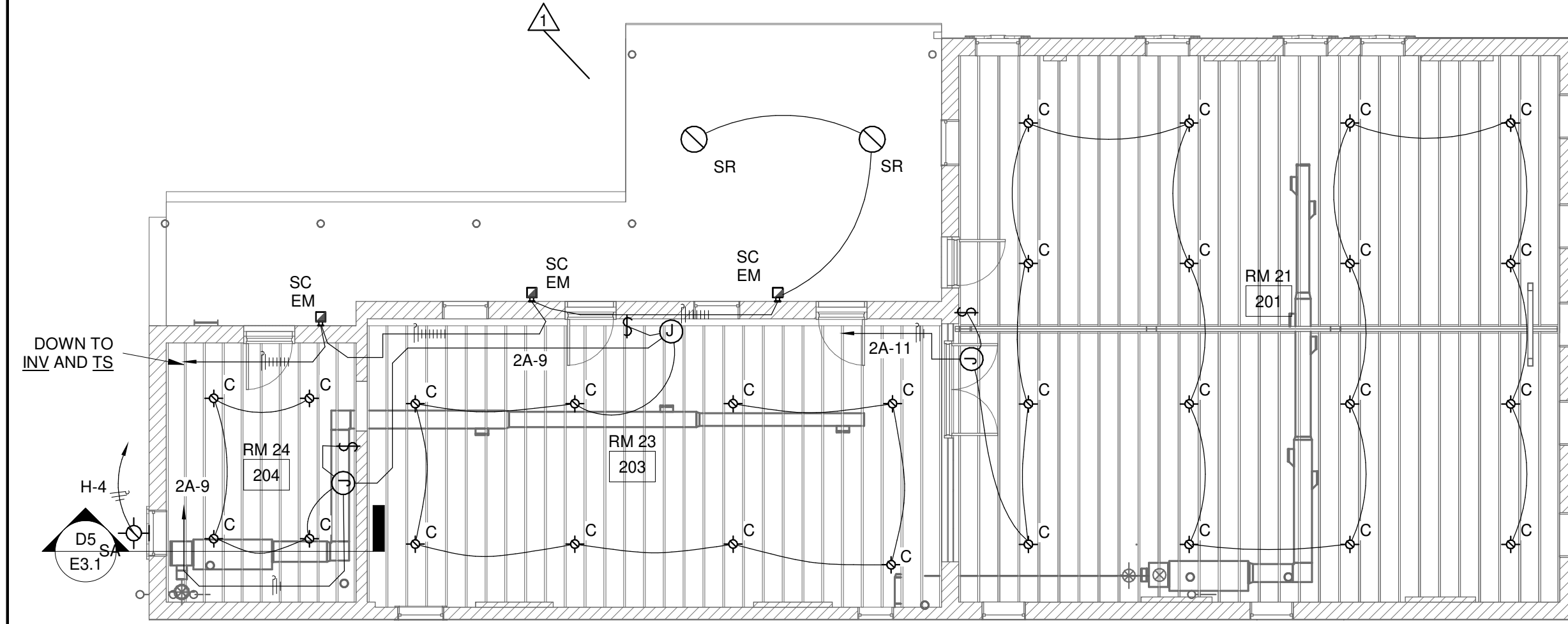
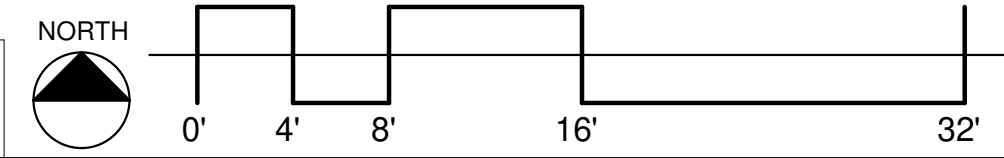
NOTES:
1. Standard lumens of any CCT. 2. Standard CCT values of 2700K, 3000K, 3500K, 4000K, 5000K, 5500K, 6000K, 6500K, 7000K, 7500K, 8000K, 8500K, 9000K, 9500K, 10000K. 3. CCT is a range of CCT values. 4. Open Airline Only. 5. 83 CRI. 6. 11" Max. 7. Max. 11" Max. 8. Max. 11" Max. 9. Max. 11" Max. 10. Max. 11" Max. 11. Max. 11" Max. 12. Max. 11" Max. 13. Max. 11" Max. 14. Max. 11" Max. 15. Max. 11" Max. 16. Max. 11" Max. 17. Max. 11" Max. 18. Max. 11" Max. 19. Max. 11" Max. 20. Max. 11" Max. 21. Max. 11" Max. 22. Max. 11" Max. 23. Max. 11" Max. 24. Max. 11" Max. 25. Max. 11" Max. 26. Max. 11" Max. 27. Max. 11" Max. 28. Max. 11" Max. 29. Max. 11" Max. 30. Max. 11" Max. 31. Max. 11" Max. 32. Max. 11" Max. 33. Max. 11" Max. 34. Max. 11" Max. 35. Max. 11" Max. 36. Max. 11" Max. 37. Max. 11" Max. 38. Max. 11" Max. 39. Max. 11" Max. 40. Max. 11" Max. 41. Max. 11" Max. 42. Max. 11" Max. 43. Max. 11" Max. 44. Max. 11" Max. 45. Max. 11" Max. 46. Max. 11" Max. 47. Max. 11" Max. 48. Max. 11" Max. 49. Max. 11" Max. 50. Max. 11" Max. 51. Max. 11" Max. 52. Max. 11" Max. 53. Max. 11" Max. 54. Max. 11" Max. 55. Max. 11" Max. 56. Max. 11" Max. 57. Max. 11" Max. 58. Max. 11" Max. 59. Max. 11" Max. 60. Max. 11" Max. 61. Max. 11" Max. 62. Max. 11" Max. 63. Max. 11" Max. 64. Max. 11" Max. 65. Max. 11" Max. 66. Max. 11" Max. 67. Max. 11" Max. 68. Max. 11" Max. 69. Max. 11" Max. 70. Max. 11" Max. 71. Max. 11" Max. 72. Max. 11" Max. 73. Max. 11" Max. 74. Max. 11" Max. 75. Max. 11" Max. 76. Max. 11" Max. 77. Max. 11" Max. 78. Max. 11" Max. 79. Max. 11" Max. 80. Max. 11" Max. 81. Max. 11" Max. 82. Max. 11" Max. 83. Max. 11" Max. 84. Max. 11" Max. 85. Max. 11" Max. 86. Max. 11" Max. 87. Max. 11" Max. 88. Max. 11" Max. 89. Max. 11" Max. 90. Max. 11" Max. 91. Max. 11" Max. 92. Max. 11" Max. 93. Max. 11" Max. 94. Max. 11" Max. 95. Max. 11" Max. 96. Max. 11" Max. 97. Max. 11" Max. 98. Max. 11" Max. 99. Max. 11" Max. 100. Max. 11" Max. 101. Max. 11" Max. 102. Max. 11" Max. 103. Max. 11" Max. 104. Max. 11" Max. 105. Max. 11" Max. 106. Max. 11" Max. 107. Max. 11" Max. 108. Max. 11" Max. 109. Max. 11" Max. 110. Max. 11" Max. 111. Max. 11" Max. 112. Max. 11" Max. 113. Max. 11" Max. 114. Max. 11" Max. 115. Max. 11" Max. 116. Max. 11" Max. 117. Max. 11" Max. 118. Max. 11" Max. 119. Max. 11" Max. 120. Max. 11" Max. 121. Max. 11" Max. 122. Max. 11" Max. 123. Max. 11" Max. 124. Max. 11" Max. 125. Max. 11" Max. 126. Max. 11" Max. 127. Max. 11" Max. 128. Max. 11" Max. 129. Max. 11" Max. 130. Max. 11" Max. 131. Max. 11" Max. 132. Max. 11" Max. 133. Max. 11" Max. 134. Max. 11" Max. 135. Max. 11" Max. 136. Max. 11" Max. 137. Max. 11" Max. 138. Max. 11" Max. 139. Max. 11" Max. 140. Max. 11" Max. 141. Max. 11" Max. 142. Max. 11" Max. 143. Max. 11" Max. 144. Max. 11" Max. 145. Max. 11" Max. 146. Max. 11" Max. 147. Max. 11" Max. 148. Max. 11" Max. 149. Max. 11" Max. 150. Max. 11" Max. 151. Max. 11" Max. 152. Max. 11" Max. 153. Max. 11" Max. 154. Max. 11" Max. 155. Max. 11" Max. 156. Max. 11" Max. 157. Max. 11" Max. 158. Max. 11" Max. 159. Max. 11" Max. 160. Max. 11" Max. 161. Max. 11" Max. 162. Max. 11" Max. 163. Max. 11" Max. 164. Max. 11" Max. 165. Max. 11" Max. 166. Max. 11" Max. 167. Max. 11" Max. 168. Max. 11" Max. 169. Max. 11" Max. 170. Max. 11" Max. 171. Max. 11" Max. 172. Max. 11" Max. 173. Max. 11" Max. 174. Max. 11" Max. 175. Max. 11" Max. 176. Max. 11" Max. 177. Max. 11" Max. 178. Max. 11" Max. 179. Max. 11" Max. 180. Max. 11" Max. 181. Max. 11" Max. 182. Max. 11" Max. 183. Max. 11" Max. 184. Max. 11" Max. 185. Max. 11" Max. 186. Max. 11" Max. 187. Max. 11" Max. 188. Max. 11" Max. 189. Max. 11" Max. 190. Max. 11" Max. 191. Max. 11" Max. 192. Max. 11" Max. 193. Max. 11" Max. 194. Max. 11" Max. 195. Max. 11" Max. 196. Max. 11" Max. 197. Max. 11" Max. 198. Max. 11" Max. 199. Max. 11" Max. 200. Max. 11" Max. 201. Max. 11" Max. 202. Max. 11" Max. 203. Max. 11" Max. 204. Max. 11" Max. 205. Max. 11" Max. 206. Max. 11" Max. 207. Max. 11" Max. 208. Max. 11" Max. 209. Max. 11" Max. 210. Max. 11" Max. 211. Max. 11" Max. 212. Max. 11" Max. 213. Max. 11" Max. 214. Max. 11" Max. 215. Max. 11" Max. 216. Max. 11" Max. 217. Max. 11" Max. 218. Max. 11" Max. 219. Max. 11" Max. 220. Max. 11" Max. 221. Max. 11" Max. 222. Max. 11" Max. 223. Max. 11" Max. 224. Max. 11" Max. 225. Max. 11" Max. 226. Max. 11" Max. 227. Max. 11" Max. 228. Max. 11" Max. 229. Max. 11" Max. 230. Max. 11" Max. 231. Max. 11" Max. 232. Max. 11" Max. 233. Max. 11" Max. 234. Max. 11" Max. 235. Max. 11" Max. 236. Max. 11" Max. 237. Max. 11" Max. 238. Max. 11" Max. 239. Max. 11" Max. 240. Max. 11" Max. 241. Max. 11" Max. 242. Max. 11" Max. 243. Max. 11" Max. 244. Max. 11" Max. 245. Max. 11" Max. 246. Max. 11" Max. 247. Max. 11" Max. 248. Max. 11" Max. 249. Max. 11" Max. 250. Max. 11" Max. 251. Max. 11" Max. 252. Max. 11" Max. 253. Max. 11" Max. 254. Max. 11" Max. 255. Max. 11" Max. 256. Max. 11" Max. 257. Max. 11" Max. 258. Max. 11" Max. 259. Max. 11" Max. 260. Max. 11" Max. 261. Max. 11" Max. 262. Max. 11" Max. 263. Max. 11" Max. 264. Max. 11" Max. 265. Max. 11" Max. 266. Max. 11" Max. 267. Max. 11" Max. 268. Max. 11" Max. 269. Max. 11" Max. 270. Max. 11" Max. 271. Max. 11" Max. 272. Max. 11" Max. 273. Max. 11" Max. 274. Max. 11" Max. 275. Max. 11" Max. 276. Max. 11" Max. 277. Max. 11" Max. 278. Max. 11" Max. 279. Max. 11" Max. 280. Max. 11" Max. 281. Max. 11" Max. 282. Max. 11" Max. 283. Max. 11" Max. 284. Max. 11" Max. 285. Max. 11" Max. 286. Max. 11" Max. 287. Max. 11" Max. 288. Max. 11" Max. 289. Max. 11" Max. 290. Max. 11" Max. 291. Max. 11" Max. 292. Max. 11" Max. 293. Max. 11" Max. 294. Max. 11" Max. 295. Max. 11" Max. 296. Max. 11" Max. 297. Max. 11" Max. 298. Max. 11" Max. 299. Max. 11" Max. 300. Max. 11" Max. 301. Max. 11" Max. 302. Max. 11" Max. 303. Max. 11" Max. 304. Max. 11" Max. 305. Max. 11" Max. 306. Max. 11" Max. 307. Max. 11" Max. 308. Max. 11" Max. 309. Max. 11" Max. 310. Max. 11" Max. 311. Max. 11" Max. 312. Max. 11" Max. 313. Max. 11" Max. 314. Max. 11" Max. 315. Max. 11" Max. 316. Max. 11" Max. 317. Max. 11" Max. 318. Max. 11" Max. 319. Max. 11" Max. 320. Max. 11" Max. 321. Max. 11" Max. 322. Max. 11" Max. 323. Max. 11" Max. 324. Max. 11" Max. 325. Max. 11" Max. 326. Max. 11" Max. 327. Max. 11" Max. 328. Max. 11" Max. 329. Max. 11" Max. 330. Max. 11" Max. 331. Max. 11" Max. 332. Max. 11" Max. 333. Max. 11" Max. 334. Max. 11" Max. 335. Max. 11" Max. 336. Max. 11" Max. 337. Max. 11" Max. 338. Max. 11" Max. 339. Max. 11" Max. 340. Max. 11" Max. 341. Max. 11" Max. 342. Max. 11" Max. 343. Max. 11" Max. 344. Max. 11" Max. 345. Max. 11" Max. 346. Max. 11" Max. 347. Max. 11" Max. 348. Max. 11" Max. 349. Max. 11" Max. 350. Max. 11" Max. 351. Max. 11" Max. 352. Max. 11" Max. 353. Max. 11" Max. 354. Max. 11" Max. 355. Max. 11" Max. 356. Max. 11" Max. 357. Max. 11" Max. 358. Max. 11" Max. 359. Max. 11" Max. 360. Max. 11" Max. 361. Max. 11" Max. 362. Max. 11" Max. 363. Max. 11" Max. 364. Max. 11" Max. 365. Max. 11" Max. 366. Max. 11" Max. 367. Max. 11" Max. 368. Max. 11" Max. 369. Max. 11" Max. 370. Max. 11" Max. 371. Max. 11" Max. 372. Max. 11" Max. 373. Max. 11" Max. 374. Max. 11" Max. 375. Max. 11" Max. 376. Max. 11" Max. 377. Max. 11" Max. 378. Max. 11" Max. 379. Max. 11" Max. 380. Max. 11" Max. 381. Max. 11" Max. 382. Max. 11" Max. 383. Max. 11" Max. 384. Max. 11" Max. 385. Max. 11" Max. 386. Max. 11" Max. 387. Max. 11" Max. 388. Max. 11" Max. 389. Max. 11" Max. 390. Max. 11" Max. 391. Max. 11" Max. 392. Max. 11" Max. 393. Max. 11" Max. 394. Max. 11" Max. 395. Max. 11" Max. 396. Max. 11" Max. 397. Max. 11" Max. 398. Max. 11" Max. 399. Max. 11" Max. 400. Max. 11" Max. 401. Max. 11" Max. 402. Max. 11" Max. 403. Max. 11" Max. 404. Max. 11" Max. 405. Max. 11" Max. 406. Max. 11" Max. 407. Max. 11" Max. 408. Max. 11" Max. 409. Max. 11" Max. 410. Max. 11" Max. 411. Max. 11" Max. 412. Max. 11" Max. 413. Max. 11" Max. 414. Max. 11" Max. 415. Max. 11" Max. 416. Max. 11" Max. 417. Max. 11" Max. 418. Max. 11" Max. 419. Max. 11" Max. 420. Max. 11" Max. 421. Max. 11" Max. 422. Max. 11" Max. 423. Max. 11" Max. 424. Max. 11" Max. 425. Max. 11" Max. 426. Max. 11" Max. 427. Max. 11" Max. 428. Max. 11" Max. 429. Max. 11" Max. 430. Max. 11" Max. 431. Max. 11" Max. 432. Max. 11" Max. 433. Max. 11" Max. 434. Max. 11" Max. 435. Max. 11" Max. 436. Max. 11" Max. 437. Max. 11" Max. 438. Max. 11" Max. 439. Max. 11" Max. 440. Max. 11" Max. 441. Max. 11" Max. 442. Max. 11" Max. 443. Max. 11" Max. 444. Max. 11" Max. 445. Max. 11" Max. 446. Max. 11" Max. 447. Max. 11" Max. 448. Max. 11" Max. 449. Max. 11" Max. 450. Max. 11" Max. 451. Max. 11" Max. 452. Max. 11" Max. 453. Max. 11" Max. 454. Max. 11" Max. 455. Max. 11" Max. 456. Max. 11" Max. 457. Max. 11" Max. 458. Max. 11" Max. 459. Max. 11" Max. 460. Max. 11" Max. 461. Max. 11" Max. 462. Max. 11" Max. 463. Max. 11" Max. 464. Max. 11" Max. 465. Max. 11" Max. 466. Max. 11" Max. 467. Max. 11" Max. 468. Max. 11" Max. 469. Max. 11" Max. 470. Max. 11" Max. 471. Max. 11" Max. 472. Max. 11" Max. 473. Max. 11" Max. 474. Max. 11" Max. 475. Max. 11" Max. 476. Max. 11" Max. 477. Max. 11" Max. 478. Max. 11" Max. 479. Max. 11" Max. 480. Max. 11" Max. 481. Max. 11" Max. 482. Max. 11" Max. 483. Max. 11" Max. 484. Max. 11" Max. 485. Max. 11" Max. 486. Max. 11" Max. 487. Max. 11" Max. 488. Max. 11" Max. 489. Max. 11" Max. 490. Max. 11" Max. 491. Max. 11" Max. 492. Max. 11" Max. 493. Max. 11" Max. 494. Max. 11" Max. 495. Max. 11" Max. 496. Max. 11" Max. 497. Max. 11" Max. 498. Max. 11" Max. 499. Max. 11" Max. 500. Max. 11" Max. 501. Max. 11" Max. 502. Max. 11" Max. 503. Max. 11" Max. 504. Max. 11" Max. 505. Max. 11" Max. 506. Max. 11" Max. 507. Max. 11" Max. 508. Max. 11" Max. 509. Max. 11" Max. 510. Max. 11" Max. 511. Max. 11" Max. 512. Max. 11" Max. 513. Max. 11" Max. 514. Max. 11" Max. 515. Max. 11" Max. 516. Max. 11" Max. 517. Max. 11" Max. 518. Max. 11" Max. 519. Max. 11" Max. 520. Max. 11" Max. 521. Max. 11" Max. 522. Max. 11" Max. 523. Max. 11" Max. 524. Max. 11" Max. 525. Max. 11" Max. 526. Max. 11" Max. 527. Max. 11" Max. 528. Max. 11" Max. 529. Max. 11" Max. 530. Max. 11" Max. 531. Max. 11" Max. 532. Max. 11" Max. 533. Max. 11" Max. 534. Max. 11" Max. 535. Max. 11" Max. 536. Max. 11" Max. 537. Max. 11" Max. 538. Max. 11" Max. 539. Max. 11" Max. 540. Max. 11" Max. 541. Max. 11" Max. 542. Max. 11" Max. 543. Max. 11" Max. 544. Max. 11" Max. 545. Max. 11" Max. 546. Max. 11" Max. 547. Max. 11" Max. 548. Max. 11" Max. 549. Max. 11" Max. 550. Max. 11" Max. 551. Max. 11" Max. 552. Max. 11" Max. 553. Max. 11" Max. 554. Max. 11" Max. 555. Max. 11" Max. 556. Max. 11" Max. 557. Max. 11" Max. 558. Max. 11" Max. 559. Max. 11" Max. 560. Max. 11" Max. 561. Max. 11" Max. 562. Max. 11" Max. 563. Max. 11" Max. 564. Max. 11" Max. 565. Max. 11" Max. 566. Max. 11" Max. 567. Max. 11" Max. 568. Max. 11" Max. 569. Max. 11" Max. 570. Max. 11" Max. 571. Max. 11" Max. 572. Max. 11" Max. 573. Max. 11" Max. 574. Max. 11" Max. 575. Max. 11" Max. 576. Max. 11" Max. 577. Max. 11" Max. 578. Max. 11" Max. 579. Max. 11" Max. 580. Max. 11" Max. 581. Max. 11" Max. 582. Max. 11" Max. 583. Max. 11" Max. 584. Max. 11" Max. 585. Max. 11" Max. 586. Max. 11" Max. 587. Max. 11" Max. 588. Max. 11" Max. 589. Max. 11" Max. 590. Max. 11" Max. 591. Max. 11" Max. 592. Max. 11" Max. 593. Max. 11" Max. 594. Max. 11" Max. 595. Max. 11" Max. 596. Max. 11" Max. 597. Max. 11" Max. 598. Max. 11" Max. 599. Max. 11" Max. 600. Max. 11" Max. 601. Max. 11" Max. 602. Max. 11" Max. 603. Max. 11" Max. 604. Max. 11" Max. 605. Max. 11" Max. 606. Max. 11" Max. 607. Max. 11" Max. 608. Max. 11" Max. 609. Max. 11" Max. 610. Max. 11" Max. 611. Max. 11" Max. 612. Max. 11" Max. 613. Max. 11" Max. 614. Max. 11" Max. 615. Max. 11" Max. 616. Max. 11" Max. 617. Max. 11" Max. 618. Max. 11" Max. 619. Max. 11" Max. 620. Max. 11" Max. 621. Max. 11" Max. 622. Max. 11" Max. 623. Max. 11" Max. 624. Max. 11" Max. 625. Max. 11" Max. 626. Max. 11" Max. 627. Max. 11" Max. 628. Max. 11" Max. 629. Max. 11" Max. 630. Max. 11" Max. 631. Max. 11" Max. 632. Max. 11" Max. 633. Max. 11" Max. 634. Max. 11" Max. 635. Max. 11" Max. 636. Max. 11" Max. 637. Max. 11" Max. 638. Max. 11" Max. 639. Max. 11" Max. 640. Max. 11" Max. 641. Max. 11" Max. 642. Max. 11" Max. 643. Max. 11" Max. 644. Max. 11" Max. 645. Max. 11" Max. 646. Max. 11" Max. 647. Max. 11" Max. 648. Max. 11" Max. 649. Max. 11" Max. 650. Max. 11" Max. 651. Max. 11" Max. 652. Max. 11" Max. 653. Max. 11" Max. 654. Max. 11" Max. 655. Max. 11" Max. 656. Max. 11" Max. 657. Max. 11" Max. 658. Max. 11" Max. 659. Max. 11" Max. 660. Max. 11" Max. 661. Max. 11" Max. 662. Max. 11" Max. 663. Max. 11" Max. 664. Max. 11" Max. 665. Max. 11" Max. 666. Max. 11" Max. 667. Max. 11" Max. 668. Max. 11" Max. 669. Max. 11" Max. 670. Max. 11" Max. 671. Max. 11" Max. 672. Max. 11" Max. 673. Max. 11" Max. 674. Max. 11" Max. 675. Max. 11" Max. 676. Max. 11" Max. 677. Max. 11" Max. 678. Max. 11" Max. 679. Max. 11" Max. 680. Max. 11" Max. 681. Max. 11" Max. 682. Max. 11" Max. 683. Max. 11" Max. 684. Max. 11" Max. 685. Max. 11" Max. 686. Max. 11" Max. 687. Max. 11" Max. 688. Max. 11" Max. 689. Max. 11" Max. 690. Max. 11" Max. 691. Max. 11" Max. 692. Max. 11" Max. 693. Max. 11" Max. 694. Max. 11" Max. 695. Max. 11" Max. 696. Max. 11" Max. 697. Max. 11" Max. 698. Max. 11" Max. 699. Max. 11" Max. 700. Max. 11" Max. 701. Max. 11" Max. 702. Max. 11" Max. 703. Max. 11" Max. 704. Max. 11" Max. 705. Max. 11" Max. 706. Max. 11" Max. 707. Max. 11" Max. 708. Max. 11" Max. 709. Max. 11" Max. 710. Max. 11" Max. 711. Max. 11" Max. 712. Max. 11" Max. 713. Max. 11" Max. 714. Max. 11" Max. 715. Max. 11" Max. 716. Max. 11" Max. 717. Max. 11" Max. 718. Max. 11" Max. 719. Max. 11" Max. 720. Max. 11" Max. 721. Max. 11" Max. 722. Max. 11" Max. 723. Max. 11" Max. 724. Max. 11" Max. 725. Max. 11" Max. 726. Max. 11" Max. 727. Max. 11" Max. 728. Max. 11" Max. 729. Max. 11" Max. 730. Max. 11" Max. 731. Max. 11" Max. 732. Max. 11" Max. 733. Max. 11" Max. 734. Max. 11" Max. 735. Max. 11" Max. 736. Max. 11" Max. 737. Max. 11" Max. 738. Max. 11" Max. 739. Max. 11" Max. 740. Max. 11" Max. 741. Max. 11" Max. 742. Max. 11" Max. 743. Max. 11" Max. 744. Max. 11" Max. 745. Max. 11" Max. 746. Max. 11" Max. 747. Max. 11" Max. 748. Max. 11" Max. 749. Max. 11" Max. 750. Max. 11" Max. 751. Max. 11" Max. 752. Max. 11" Max. 753. Max. 11" Max. 754. Max. 11" Max. 755. Max. 11" Max. 756. Max. 11" Max. 757. Max. 11" Max. 758. Max. 11" Max. 759. Max. 11" Max. 760. Max. 11" Max. 761. Max. 11" Max. 762. Max. 11" Max. 763. Max. 11" Max. 764. Max. 11" Max. 765. Max. 11" Max. 766. Max. 11" Max. 767. Max. 11" Max. 768. Max. 11" Max. 769. Max. 11" Max. 770. Max. 11" Max. 771. Max. 11" Max. 772. Max. 11" Max. 773. Max. 11" Max. 774. Max. 11" Max. 775. Max. 11" Max. 776. Max. 11" Max. 777. Max. 11" Max. 778. Max. 11" Max. 779. Max. 11" Max. 780. Max. 11" Max. 781. Max. 11" Max. 782. Max. 11" Max. 783. Max. 11" Max. 784. Max. 11" Max. 785. Max. 11" Max. 786. Max. 11" Max. 787. Max. 11" Max. 788. Max. 11" Max. 789. Max. 11" Max. 790. Max. 11" Max. 791. Max. 11" Max. 792. Max. 11" Max. 793. Max. 11" Max. 794. Max. 11" Max. 795. Max. 11" Max. 796. Max. 11" Max. 797. Max. 11" Max. 798. Max. 11" Max. 799. Max. 11" Max. 800. Max. 11" Max. 801. Max. 11" Max. 802. Max. 11" Max. 803. Max. 11" Max. 804. Max. 11" Max. 805. Max. 11" Max. 806. Max. 11" Max. 807. Max. 11" Max. 808. Max. 11" Max. 809. Max. 11" Max. 810. Max. 11" Max. 811. Max. 11" Max. 812. Max. 11" Max. 813. Max. 11" Max. 814. Max. 11" Max. 815. Max. 11" Max. 816. Max. 11" Max. 817. Max. 11" Max. 818. Max. 1

THIS DOCUMENT IS THE PROPERTY OF A2H, INC. AND ALL COMMON LAW, STATUTORY AND OTHER RESERVED RIGHTS SHALL BE RETAINED BY SAME. ANY CHANGES MADE TO THIS DOCUMENT WITHOUT THE EXPRESS WRITTEN CONSENT OF A2H, INC. SHALL BE PROHIBITED AND ARE SUBJECT TO LEGAL PROCEEDINGS. PROFESSIONAL ENGINEERING DESIGN AND CONSTRUCTION SHALL BE PROVIDED BY THE LICENSED PROFESSIONAL ENGINEER SIGNING THIS DRAWING.



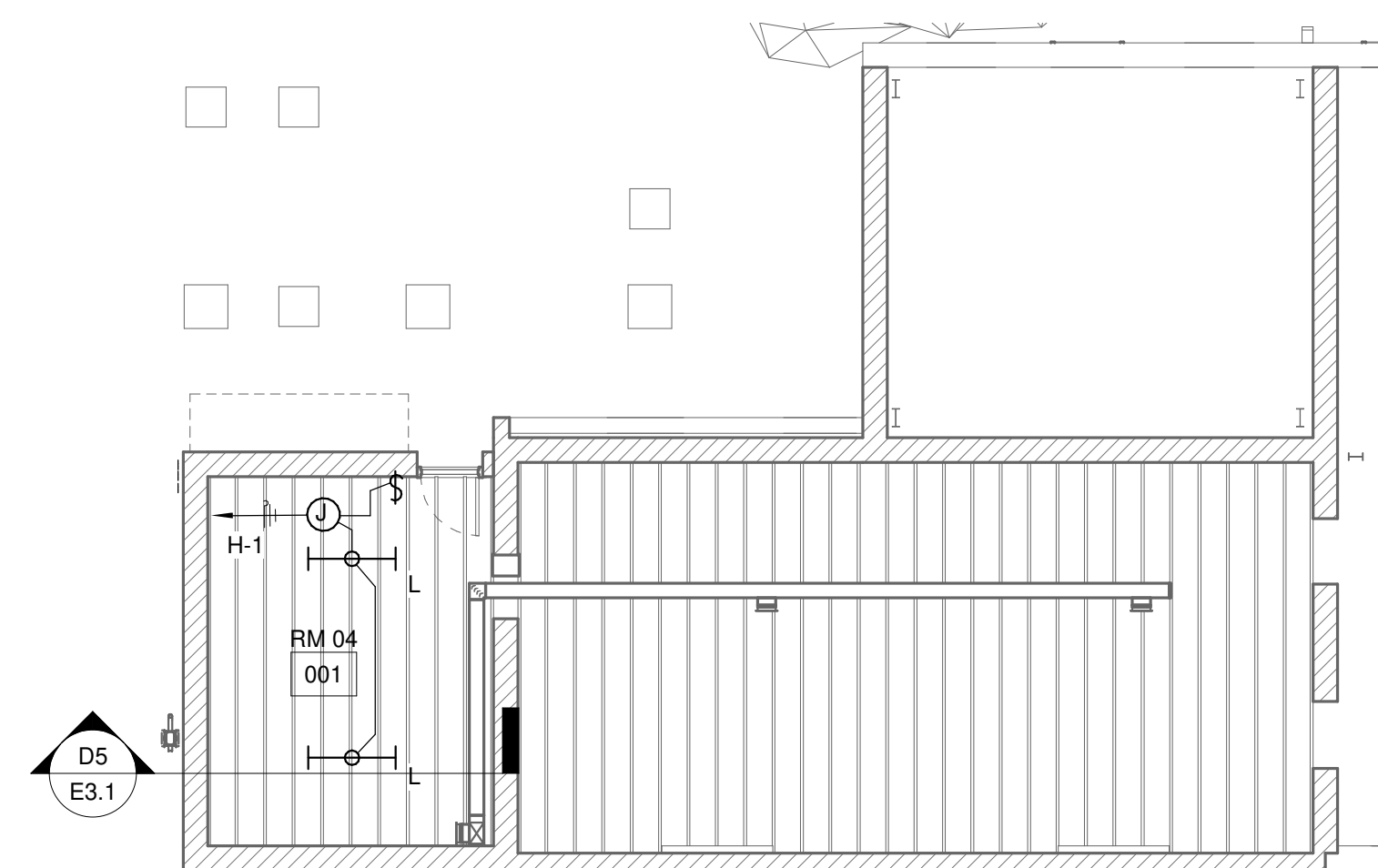
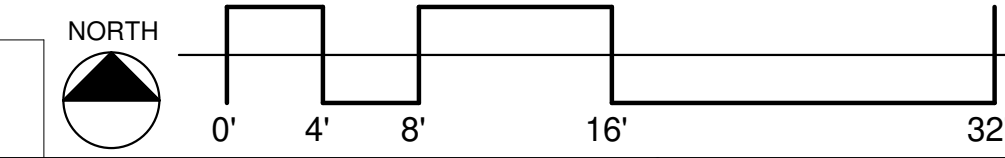
B1 LIGHTING PLAN - FIRST FLOOR

1/8" = 1'-0"



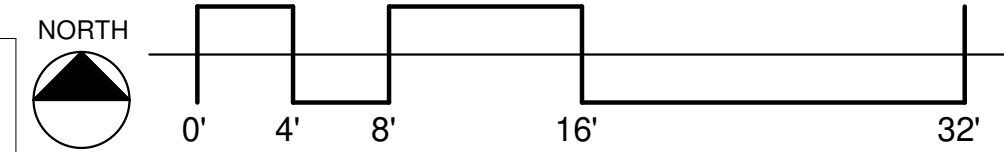
B2 LIGHTING PLAN - SECOND FLOOR

1/8" = 1'-0"



D1 LIGHTING PLAN - CRAWL SPACE

1/8" = 1'-0"



KEYED NOTES

- TIME SWITCH IS: ASTRONOMICAL ELECTRONIC TIME SWITCH IN NEMA 3R ENCLOSURE, 2-POLE, SINGLE THROW. CONNECT EXTERIOR LIGHTING THROUGH TIME SWITCH AND PROGRAM DUSK TO DAWN.
- EMERGENCY LIGHTING INVERTER: LOCATE AT CEILING LEVEL. CONNECT EXTERIOR EMERGENCY LIGHTING AND BYPASS CONTROL.
- CIRCUIT INCLUDES NORMAL SWITCHLEG, INVERTER SWITCHLEG, 4 0-10 DIMMING CONDUCTORS, NEUTRAL AND GROUND. ROUTE THROUGH INV AND IS.
- ROUTE THROUGH INV AND IS.
- STUB TYPE SC CONDUIT THROUGH BRICK TO JUNCTION BOX WITHIN. ROUTE CONDUIT HIGH ON FACE OF WALL. SEE NOTES AND DETAIL.

C4 LIGHTING KEYED NOTES

N.T.S.

GENERAL NOTES:

- INTERIOR OF BUILDING IS SHELL SPACE AND IS NOT DESIGNED TO BE OCCUPIED. NORMAL LIGHTING DESIGNED FOR TEMPORARY LIGHTING AND POSSIBLE RE-USE IN FUTURE. EMERGENCY EGRESS LIGHTING NOT INCLUDED AND WILL BE REQUIRED FOR OCCUPANCY. INTERIOR LIGHTING CONTROLS DO NOT COMPLY WITH IECC AND WILL BE REQUIRED FOR OCCUPANCY.
- FIRE RESISTANCE OF CEILING/FLOOR ASSEMBLY NOT ACCOUNTED FOR. SHOULD FUTURE OCCUPANCY REQUIRE FIRE RATED FLOOR RATING, LUMINARIES WITH THAT RATING OR SPECIAL CONSTRUCTION MAY BE REQUIRED.
- INTERIOR LIGHTING: FASTEN TO CEILING JOISTS WITH THE INTENT OF PERMANENT INSTALLATION WITH FACE OF DOWNLIGHT FRAME AT BOTTOM OF JOIST. FOR SECOND FLOOR, FIELD-FABRICATE AIR-TIGHT BOX AROUND DOWNLIGHT FRAME WITH 3-IN MINIMUM CLEARANCE TO ALLOW INSTALLATION OF THERMAL INSULATION AROUND DOWNLIGHT.
- EXTERIOR LIGHTING AND LIGHTING CONTROLS
 - TYPE SC: FASTEN EXTERIOR LIGHTING CANOPY AND BACKPLATE DIRECTLY TO BRICK SURFACE WITH SINGLE CONDUIT ENTRY FROM BACK OF BOX.
 - TYPE SB: LOCATE UNDER STAIR TREAD, FASTENED FLUSH IN KICKPLATE. ROUTE CONDUIT THROUGH 1ST FLOOR CEILING CAVITY TO INTERIOR SPACE WHERE INVERTER IS LOCATED.
 - LIGHTING CONTROLLED BY TIME SWITCH IS ADJACENT TO HOUSE PANEL.
- EMERGENCY LIGHTING:
 - INTERIOR: EGRESS LIGHTING NOT INCLUDED.
 - EXTERIOR: EMERGENCY LIGHTING INVERTER INV WITH 0-10V OVERRIDE DIMMING, 250W, SIGNIFY/BODINE ELI-S-250. CONNECT EXTERIOR LIGHTING INDICATED WITH HATCH TO INV. CONTROL THROUGH TIME SWITCH IS TO BE BYPASSED WITH UL824 FUNCTION OF INVERTER.
- CONDUIT AND BOXES:
 - INTERIOR: WALL SWITCHES: SURFACE 4-SQUARE BOX WITH EMT STUBBED TO J-BOX AT CEILING. CONNECT TYPE C WITH MC-CABLE FASTENED TO UNDERSIDE OF CEILING JOISTS. MC-CABLE TO BE REMOVED DURING TENANT INFILL CONSTRUCTION.
 - EXTERIOR: ROUTE CONDUITS ALONG CEILING.
 - FUTURE CEILINGS WILL REQUIRE ACCESS TO JUNCTION BOXES.

A5 LIGHTING GENERAL NOTES

N.T.S.



PERMIT SET

REVISIONS

1	02-05-21	ADD #1
---	----------	--------

PROJECT NO.	DATE
19545	1/22/21
DRAWN	CHECKED
CDR	MCL

LIGHTING PLANS

E1.1

2/11/2021 5:45:29 PM C:\Users\cody\Documents\Revit Local Models\19545 - Electrical_Loody@a2h.com.rvt

YUKON LED (DIRECT)

DATE:

PROJECT:

TYPE:

CATALOG NUMBER LOGIC:



*120V only

**Housing may be shipped ahead upon request.

CATALOG NUMBER LOGIC

Example: B - YK - D - LED - A2780 - MAC - V - SD - 010 - MT

MATERIAL

(Blank) - Aluminum B - Brass S - Stainless Steel

SERIES

YK - Yukon Commercial Steplight

STYLE

D - Direct

SOURCE

LED - Linear Array

LED TYPE

A2780 - 10W/2700K/80CRI A2790 - 10W/2700K/90CRI

A3080 - 10W/3000K/80CRI A3090 - 10W/3000K/90CRI

A3580 - 10W/3500K/80CRI A3590 - 10W/3500K/90CRI

A4080 - 10W/4000K/80CRI A4090 - 10W/4000K/90CRI

FINISH (See page 2 for full-color swatches)

Standard Finishes (BZP, BZW, BLP, BLW, WHP, WHW, SAP, VER)

Premium Finish (ABP, AMG, AQW, BCM, BGE, BPP, CAP, CMG, CRI, CRM, HUG, MDS, NBP, OCP, RMG, SDS, SMG, TXF, WCP, WIR)

Also available in RAL Finishes

Brass Finishes (MAC, POL, MIT)

Stainless Steel Finishes (MAC, POL)

ORIENTATION

V - Vertical

H - Horizontal

FACEPLATE

SD - Standard LD - Louvered VR - Visor DO - Deco

CO - Compass RN - Ribbon LY - Layered

CONTROL TYPE

ELV - 10W Dimming Driver (For use with Electronic Low Voltage Dimmer)*

INC - 10W Dimming Driver (For use with Incandescent Dimmer)*

0-10 - 10W Dimming Driver (For use with 0-10 Dimmer)

INPUT VOLTAGE

MT - 120-277 VAC

B-K LIGHTING

MADE IN THE USA

559.438.5800 | INFO@BKLIGHTING.COM | BKLIGHTING.COM

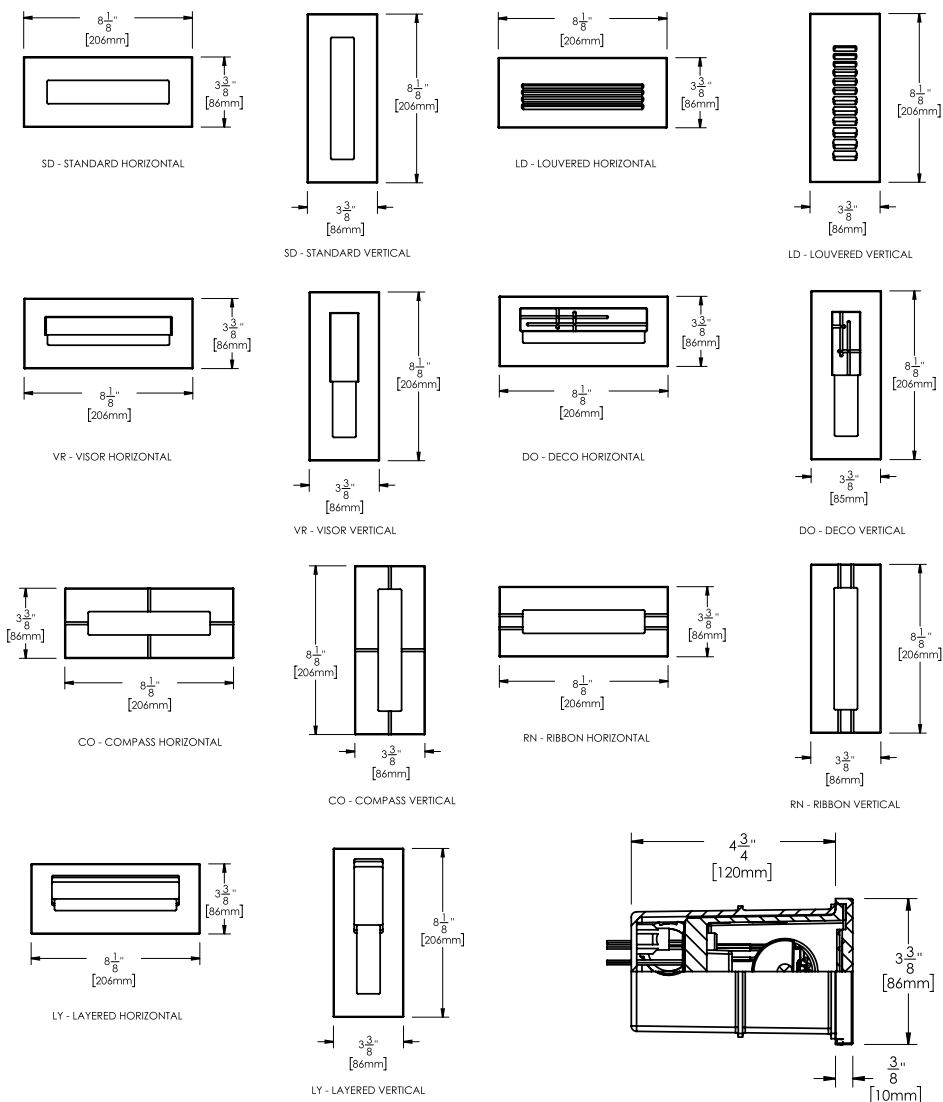
THIS DOCUMENT CONTAINS PROPRIETARY INFORMATION OF B-K LIGHTING, INC. AND ITS RECEIPT OR POSSESSION DOES NOT CONVEY ANY RIGHTS TO REPRODUCE, DISCLOSE ITS CONTENTS, OR TO MANUFACTURE, USE OR SELL ANYTHING IT MAY DESCRIBE. REPRODUCTION, DISCLOSURE OR USE WITHOUT SPECIFIC WRITTEN AUTHORIZATION OF B-K LIGHTING, INC. IS STRICTLY FORBIDDEN.

09/11/2020 SKU-1341
SUB-2819-00

YUKON LED (DIRECT)

DATE: _____ PROJECT: _____ TYPE: _____

* Fixture Weight ≈ 2.88lbs max



STANDARD FINISHES



PREMIUM FINISHES



[Click Here](#) to view larger, full-color swatches of all available finishes on our website.

B-K LIGHTING

MADE IN THE USA

559.438.5800 | INFO@BKLIGHTING.COM | BKLIGHTING.COM

YUKON LED (DIRECT)

DATE:	PROJECT:	TYPE:
-------	----------	-------

ACCESSORIES (Configure separately)

SPECIFICATIONS

ELECTRICAL	WATTAGE	9.5W
	OPERATING VOLTAGE	120-277 VAC
	DRIVER	With [1] 350mA, Class II, constant current integral driver. 50/60 Hz. >0.9 Power Factor, 5A in-rush current (typical at 120 VAC), ≤20%THD (nominal at 120 VAC full load). Output over-voltage, over-current, and short circuit protection with auto recovery. Dimming driver for use with 0-10V, Incandescent, Standard TRIAC, or ELV dimmers. 1-100% range. *TRIAC/ELV dimming at 120 VAC only.
PHYSICAL	MATERIALS	Furnished in copper-free aluminum (6061-T6)
	HOUSING	Corrosion-free composite, made from high strength, thermo-formed, sheet molded polyester compound. Glass reinforced, flame retardant with knockout plugs and four (4) side flats for 1/2" or 3/4" conduit adapters.
	FACEPLATE	Fully machined. Offered with non-visible, tamper-resistant set screws.
	WIRING	18GA Stranded, XLPE, 150°C, 600V wire.
	FINISH	StarGuard®, our exclusive RoHs compliant, 15 stage chromate-free process cleans and conversion coats aluminum components prior to application of Class 'A' TGIC polyester powder coating. Brass components are available in powder coat or handcrafted metal finish. Stainless steel components are available in handcrafted metal finish.
	WARRANTY	5-year limited warranty.
CERTIFICATION & LISTING	UL tested to IESNA LM-79. UL Listed. Certified to CAN/CSA/ANSI Standards. RoHS compliant. Suitable for indoor or outdoor use, in wet locations, and for installation within 4' of the ground. IP66 Rated. Made in the USA.	



B-K LIGHTING

MADE IN THE USA

559.438.5800 | INFO@BKLIGHTING.COM | BKLIGHTING.COM

LAMP & DRIVER DATA (YUKON DIRECT - HORIZONTAL)

DATE: _____ PROJECT: _____ TYPE: _____

LM79 DATA

BK No.	CCT (Typ.)	CRI (Typ.)	Input Watts (Typ.)	L70 Data
A2780	2700	80	9.5	50,000
A2790	2700	90	9.5	50,000
A3080	3000	80	9.5	50,000
A3090	3000	90	9.5	50,000
A3580	3500	80	9.5	50,000
A3590	3500	90	9.5	50,000
A4080	4000	80	9.5	50,000
A4090	4000	90	9.5	50,000
A2780	2700	80	9.5	50,000
A2790	2700	90	9.5	50,000
A3080	3000	80	9.5	50,000
A3090	3000	90	9.5	50,000
A3580	3500	80	9.5	50,000
A3590	3500	90	9.5	50,000
A4080	4000	80	9.5	50,000
A4090	4000	90	9.5	50,000
A2780	2700	80	9.5	50,000
A2790	2700	90	9.5	50,000
A3080	3000	80	9.5	50,000
A3090	3000	90	9.5	50,000
A3580	3500	80	9.5	50,000
A3590	3500	90	9.5	50,000
A4080	4000	80	9.5	50,000
A4090	4000	90	9.5	50,000
A2780	2700	80	9.5	50,000
A2790	2700	90	9.5	50,000
A3080	3000	80	9.5	50,000
A3090	3000	90	9.5	50,000
A3580	3500	80	9.5	50,000
A3590	3500	90	9.5	50,000
A4080	4000	80	9.5	50,000
A4090	4000	90	9.5	50,000

OPTICAL DATA

Orientation	Faceplate	Accessory/ Optic	Roadway Class	BUG	Del. Lumens	Multiplier
Horizontal	SD	1	Type II	B0 U3 G1	304.5	0.92
Horizontal	SD	1	Type II	B0 U3 G1	252.8	0.83
Horizontal	SD	1	Type II	B0 U3 G1	314.5	0.95
Horizontal	SD	1	Type II	B0 U3 G1	261.0	0.83
Horizontal	SD	1	Type II	B0 U3 G1	334.3	1.01
Horizontal	SD	1	Type II	B0 U3 G1	277.5	0.83
Horizontal	SD	1	Type II	B0 U3 G1	331.0	
Horizontal	SD	1	Type II	B0 U3 G1	274.7	0.83
Horizontal	SD	2	Type III	B0 U3 G1	447.1	0.92
Horizontal	SD	2	Type III	B0 U3 G1	371.1	0.83
Horizontal	SD	2	Type III	B0 U3 G1	461.7	0.95
Horizontal	SD	2	Type III	B0 U3 G1	383.2	0.83
Horizontal	SD	2	Type III	B0 U3 G1	490.9	1.01
Horizontal	SD	2	Type III	B0 U3 G1	407.4	0.83
Horizontal	SD	2	Type III	B0 U3 G1	486.0	
Horizontal	SD	2	Type III	B0 U3 G1	403.4	0.83
Horizontal	LV	1	Type I	B0 U2 G1	122.4	0.92
Horizontal	LV	1	Type I	B0 U2 G1	101.6	0.83
Horizontal	LV	1	Type I	B0 U2 G1	126.4	0.95
Horizontal	LV	1	Type I	B0 U2 G1	104.9	0.83
Horizontal	LV	1	Type I	B0 U2 G1	134.3	1.01
Horizontal	LV	1	Type I	B0 U2 G1	111.5	0.83
Horizontal	LV	1	Type I	B0 U2 G1	133.0	
Horizontal	LV	1	Type I	B0 U2 G1	110.4	0.83
Horizontal	VR	1	Type I	B0 U2 G1	182.2	0.92
Horizontal	VR	1	Type I	B0 U2 G1	151.2	0.83
Horizontal	VR	1	Type I	B0 U2 G1	188.1	0.95
Horizontal	VR	1	Type I	B0 U2 G1	156.1	0.83
Horizontal	VR	1	Type I	B0 U2 G1	200.0	1.01
Horizontal	VR	1	Type I	B0 U2 G1	166.0	0.83
Horizontal	VR	1	Type I	B0 U2 G1	198.0	
Horizontal	VR	1	Type I	B0 U2 G1	164.3	0.83

LAMP & DRIVER DATA (YUKON DIRECT - VERTICAL)

DATE: _____ PROJECT: _____ TYPE: _____

LM79 DATA

OPTICAL DATA

BK No.	CCT (Typ.)	CRI (Typ.)	Input Watts (Typ.)	L70 Data	Orientation	Faceplate	Accessory/ Optic	Roadway Class	BUG	Del. Lumens	Multiplier
A2780	2700	80	9.5	50,000	Vertical	SD	1	Type II	B0 U3 G1	307.3	0.92
A2790	2700	90	9.5	50,000	Vertical	SD	1	Type II	B0 U3 G1	255.0	0.83
A3080	3000	80	9.5	50,000	Vertical	SD	1	Type II	B0 U3 G1	317.3	0.95
A3090	3000	90	9.5	50,000	Vertical	SD	1	Type II	B0 U3 G1	263.4	0.83
A3580	3500	80	9.5	50,000	Vertical	SD	1	Type II	B0 U3 G1	337.3	1.01
A3590	3500	90	9.5	50,000	Vertical	SD	1	Type II	B0 U3 G1	280.0	0.83
A4080	4000	80	9.5	50,000	Vertical	SD	1	Type II	B0 U3 G1	334.0	
A4090	4000	90	9.5	50,000	Vertical	SD	1	Type II	B0 U3 G1	277.2	0.83
A2780	2700	80	9.5	50,000	Vertical	SD	2	Type II	B0 U3 G1	454.5	0.92
A2790	2700	90	9.5	50,000	Vertical	SD	2	Type II	B0 U3 G1	377.2	0.83
A3080	3000	80	9.5	50,000	Vertical	SD	2	Type II	B0 U3 G1	469.3	0.95
A3090	3000	90	9.5	50,000	Vertical	SD	2	Type II	B0 U3 G1	389.5	0.83
A3580	3500	80	9.5	50,000	Vertical	SD	2	Type II	B0 U3 G1	498.9	1.01
A3590	3500	90	9.5	50,000	Vertical	SD	2	Type II	B0 U3 G1	414.1	0.83
A4080	4000	80	9.5	50,000	Vertical	SD	2	Type II	B0 U3 G1	494.0	
A4090	4000	90	9.5	50,000	Vertical	SD	2	Type II	B0 U3 G1	410.0	0.83
A2780	2700	80	9.5	50,000	Vertical	LD	1	Type I	B0 U2 G1	149.0	0.92
A2790	2700	90	9.5	50,000	Vertical	LD	1	Type I	B0 U2 G1	123.7	0.83
A3080	3000	80	9.5	50,000	Vertical	LD	1	Type I	B0 U2 G1	153.9	0.95
A3090	3000	90	9.5	50,000	Vertical	LD	1	Type I	B0 U2 G1	127.7	0.83
A3580	3500	80	9.5	50,000	Vertical	LD	1	Type I	B0 U2 G1	163.6	1.01
A3590	3500	90	9.5	50,000	Vertical	LD	1	Type I	B0 U2 G1	135.8	0.83
A4080	4000	80	9.5	50,000	Vertical	LD	1	Type I	B0 U2 G1	162.0	
A4090	4000	90	9.5	50,000	Vertical	LD	1	Type I	B0 U2 G1	134.5	0.83
A2780	2700	80	9.5	50,000	Vertical	VR	1	Type I	B0 U2 G1	161.9	0.92
A2790	2700	90	9.5	50,000	Vertical	VR	1	Type I	B0 U2 G1	134.4	0.83
A3080	3000	80	9.5	50,000	Vertical	VR	1	Type I	B0 U2 G1	167.2	0.95
A3090	3000	90	9.5	50,000	Vertical	VR	1	Type I	B0 U2 G1	138.8	0.83
A3580	3500	80	9.5	50,000	Vertical	VR	1	Type I	B0 U2 G1	177.8	1.01
A3590	3500	90	9.5	50,000	Vertical	VR	1	Type I	B0 U2 G1	147.5	0.83
A4080	4000	80	9.5	50,000	Vertical	VR	1	Type I	B0 U2 G1	176.0	
A4090	4000	90	9.5	50,000	Vertical	VR	1	Type I	B0 U2 G1	146.1	0.83