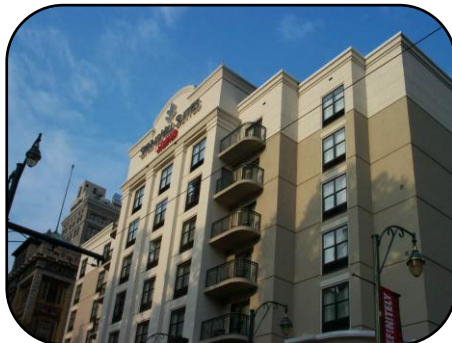




**DOWNTOWN
MEMPHIS
COMMISSION**



Downtown Memphis Review Board Application



Program Administered by:
Design Review Board
114 North Main Street
Memphis, TN 38103
901.575.0540
downtownmemphis.com

Packet information revised on
January 16, 2020



DESIGN REVIEW PROCESS

**Administered by:
Design Review Board**

1. Pre-Design Conference

Before an application for review can be submitted to the Design Review Board (DRB), a pre-design conference must be scheduled with the Downtown Memphis Commission (DMC) staff. This informal review often accelerates the approval process because staff can acquaint applicants with design standards, submittal requirements, and application procedures. Some projects, by the nature of their size and scale, may require more than one review by the DRB (e.g., site plan level review, architectural review, etc.). A pre-design conference will allow staff to communicate directly with the applicant the scope of review his or her particular project warrants. It is critical that the DRB or DMC staff is involved in reviewing projects at the earliest possible time so that the project does not get delayed and so that the board has an appropriate amount of time to fulfill its responsibilities. To schedule a pre-design conference, contact our development offices at (901) 575-0540.

2. Submittal of Application

After the pre-design conference with staff, an application for formal review and all information regarding the project must be submitted to the DMC Staff. A checklist of information necessary for review is included after the list of procedural steps. All applications for review and information must be received by the Development Project Manager no later than two weeks prior to the meeting of the DRB. The DRB generally meets on the first Wednesday of every month.

3. DRB Meeting

At the monthly meeting of the DRB, staff will present all applications that have been received prior to the date outlined above. Applicants or their representative should attend the meeting to answer any questions the DRB may have regarding the application. After reviewing each case, the DRB will vote on the proposal. Any applicant in attendance will immediately know the results of his/her submittal.

4. Approved Applications

Following approval of an application, staff will mail a letter stating the conditions of the approval to the applicant. Staff will also forward a copy of approvals to the City Construction Code Enforcement division. Administrative Approvals may take a minimum of 10 business days for approval.

5. Denied Applications

The DRB is under no obligation to approve every project. A decision may be postponed pending submittal of further information or may be denied. If an application is denied, the DRB will make recommendations to the applicant about changes that could be made to the proposal to warrant approval. These recommendations will be outlined in a letter to the applicant from staff. Changes to the proposal will be reviewed at a future meeting of the DRB.

6. Appealing a Denial

All applicants have the right to appeal a denial of the DRB to the DMC. Such appeals must be made in writing to the Chairman of the DMC within five business days of the date of the meeting at which the application was denied. Applicants may present the appeal at the regular DMC monthly meeting. The DRB chairman and staff would also be present to outline the reasons for the denial.



DESIGN REVIEW CHECKLIST

**Administered by:
Design Review Board**

Sign Proposals

If your application includes installation of a new sign or alteration to an existing sign, your submittal must include the following:

- photo(s) of the building(s) in question;
- drawings (not to exceed 11"x17" in size) of the proposed sign(s) with size and dimensions; drawing(s) should show the front and side views of the sign and may require additional drawings if proposal is not adequately illustrated in those drawings;
- description of letter style and size to be used on each sign;
- drawing or photo indicating where the sign(s) will be located on the building/site; and,
- description of the type of sign, colors, and materials of the proposed sign, including any proposed lighting.

New Construction or Renovation

If your application includes new construction or alteration to an existing structure, your submittal must include the following:

- photo(s) of the building(s) in question;
- site plan of proposed construction;
- architectural drawings of proposed construction at minimum 1/8" = 1'-0"; to include 1) building floor plan for each floor, 2) exterior elevations of all sides of the building, and 3) key construction details as requested by staff; if above drawings exceed 11"x17" in size, one reduced copy not to exceed 11"x17" should also be submitted; and,
- description of the colors and materials of the proposed work

Other Exterior Alterations

If your application includes exterior alterations other than those outlined above (such as installation of an awning or window/door replacement), your submittal must include the following:

- photo(s) of the building(s) in question;
- site plan of proposed alteration;
- drawings of proposed alteration at minimum 1/8" = 1'-0"; to include 1) exterior elevations of all affected sides of the building and 2) key construction details as requested by staff; if above drawings exceed 11"x17" in size, one reduced copy not to exceed 11"x17" should also be submitted; and
- description of the colors and materials of the proposed alterations

If requested, provide 15 copies of the complete application to DMC Staff.

This outline describes the typical requirements for a review by the Design Review Board. However, each project is unique and may require more than what is outlined above. At the pre-design conference, Downtown Memphis Commission staff will inform applicants if their particular project requires information that differs from what is described above.



DESIGN REVIEW BOARD APPLICATION

**Administered by:
Design Review Board**

Property Address*: 99-105 S Front Street

Applicant Name & Mailing Address: Robert Baddour, OJT, 1075 Race Street New Orleans, LA 70130

Applicant Phone Number: 504-383-4203 Applicant Fax Number: _____

Property Owner's Name & Mailing Address: Billy Orgel, Tower Ventures, 495 Tennessee Street, Memphis, TN 38103

Property Owner's Phone Number: 901-794-9494

The proposed work consists of the following (check all that apply):

Sign Renovation
New Building Other Exterior Alteration

Project Description: This project at 99–105 S Front Street previously received approval from the DRB on the condition that we return to the Board for exterior lighting. We are including annotated plans and elevations to illustrate our proposal in addition to product information for each light fixture. Fixture type "X" is a custom fabricated sconce that will replicate the original fixture which no longer exists. An example of the lantern is being provided, but the custom bracket will be fabricated to match. Additionally, it should be noted that the exterior light package is currently being priced, and if the cost exceeds our budget, then select fixtures will need to be reduced, as noted in the elevations.

Status of Project: Construction, with electrical rough-ins underway.

A complete application must be submitted to the Development Department no later than two weeks before a regularly scheduled meeting of the Design Review Board. Please contact Abe Lueders at (901)575-0565 or alueders@downtownmemphis.com with any questions and to submit an application.

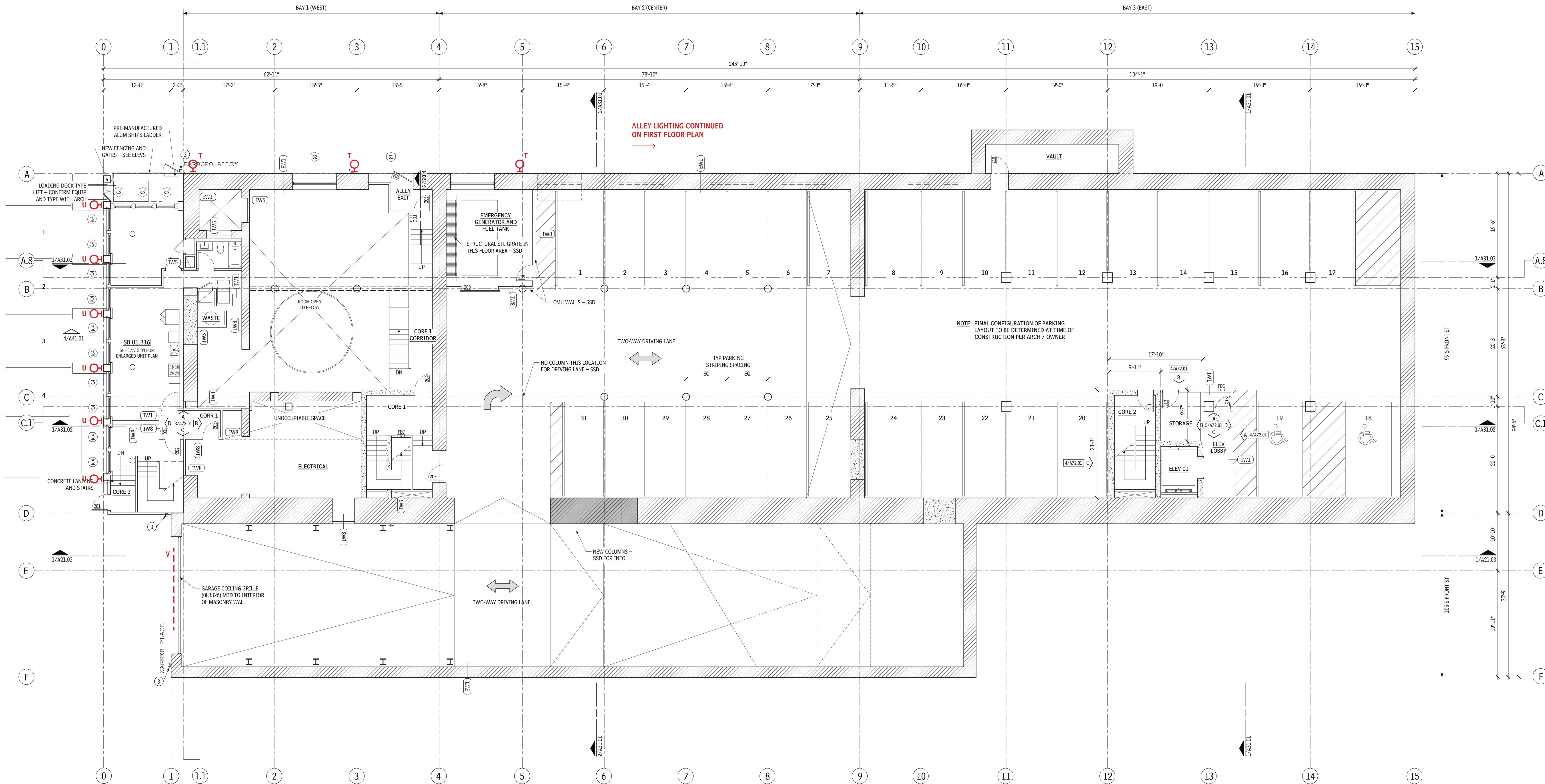
Owner/Applicant Signature: 

Date: 19 MAY 2021

*Applications for properties that are located within a Landmarks Historic District may require additional approval from the Landmarks Commission. Please contact the Shelby County Division of Planning & Development at (901) 576-6601 for more information.

LIGHTING LEGEND

MARK	TYPE
T	WALL-MOUNTED FIXTURE
U	WALL-MOUNTED UP/DOWNLIGHT
V	LINEAR DOWNLIGHT
W	SUSPENDED LIGHTING
X	WALL-MOUNTED FIXTURE
Z	BUILDING UPLIGHTING



1 SUB BASEMENT 1 FLOOR PLAN

SCALE: 1/8" = 1'-0"



OJT

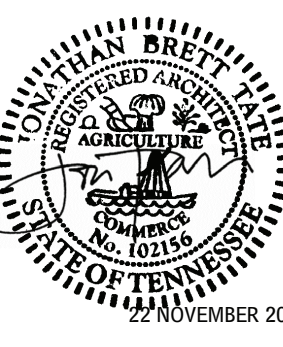
OFFICE OF JONATHAN TATE
1336 MAGAZINE STREET, SUITE 1
NEW ORLEANS, LOUISIANA 70119
504 383 4203
OFFICE@OJT.COM

STRUCTURAL ENGINEER:
CHAD STEWART & ASSOCIATES, INC
9700 VILLAGE CIRCLE, SUITE 300
LAKELAND, TN 38002
901 260 7890
C&S@STRUCTURES.COM

MECHANICAL, PLUMBING, AND
FIRE SUPPRESSION ENGINEER:
HALTOM ENGINEERING, LLC
495 HILBERRY STREET
MEMPHIS, TN 38103
901 525 2554
HALTOMENGINEERING.COM

ELECTRICAL ENGINEER:
CANUP ENGINEERING, INC
7953 STAGE HILL BLVD, SUITE 107
BARTLETT, TN 38133
901 379 9762
CANUPENG.COM

CODE CONSULTANT:
CODE SOLUTIONS GROUP, LLC
1910 MADISON AVE, SUITE 23
MEMPHIS, TN 38104
901 552 5772
CODESOLUTIONSGROUP.COM



99-105 S FRONT

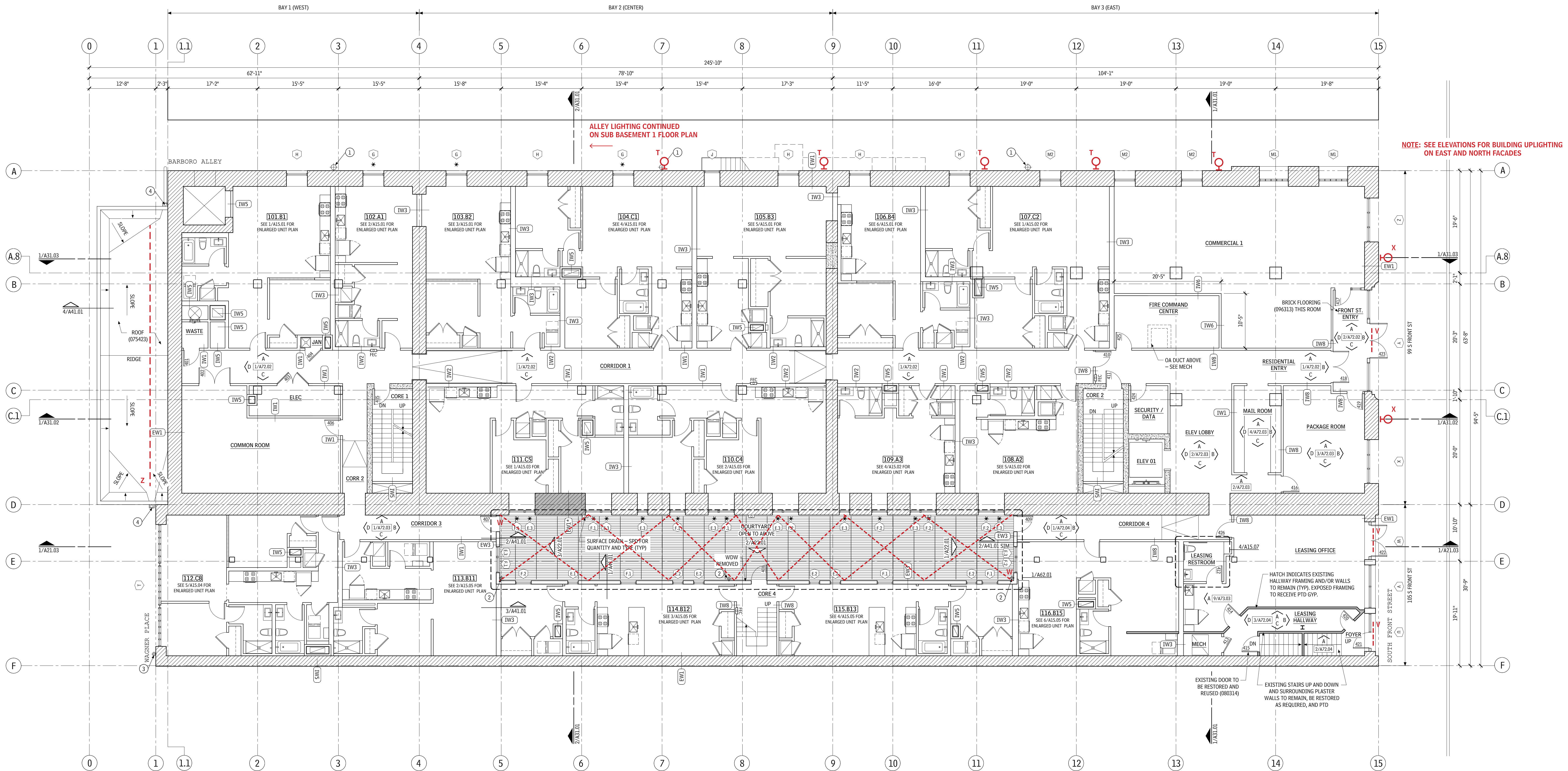
99 SOUTH FRONT STREET
MEMPHIS, TN 38103
MULTI-FAMILY, MIXED-USE RENOVATION

1 JULY 2019 - DD RELEASE
1 NOV 2019 - INTERNAL COORD RELEASE
10 DEC 2019 - REVISION 03
2 JUNE 2020 - REVISION 05
13 NOVEMBER 2020 - REVISION 06
7 DECEMBER 2020 - REVISION 07
19 APRIL 2021 - REVISION 08

19 MAY 2021
DRB APPLICATION 02

LIGHTING LEGEND

MARK	TYPE
T	WALL-MOUNTED FIXTURE
U	WALL-MOUNTED UP/DOWNLIGHT
V	LINEAR DOWNLIGHT
W	SUSPENDED LIGHTING
X	WALL-MOUNTED FIXTURE
Z	BUILDING UPLIGHTING



1 FIRST FLOOR PLAN
 SCALE: 1/8" = 1'-0"
 ↑ NORTH

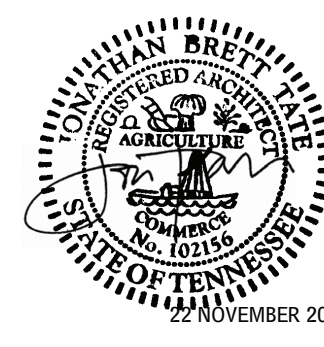
OJT
 OFFICE OF JONATHAN TATE
 1336 MAGAZINE STREET, SUITE 1
 NEW ORLEANS, LOUISIANA 70114
 504 383 4203
 OFFICE@OJT.COM

STRUCTURAL ENGINEER:
 CHAD STEWART & ASSOCIATES, INC.
 9700 VILLAGE CIRCLE, SUITE 300
 LAKELAND, TN 38002
 901 260 7890
 CSTRUCTURES.COM

MECHANICAL, PLUMBING, AND
 FIRE SUPPRESSION ENGINEER:
 HALTOM ENGINEERING, LLC
 495 HILBERRY STREET
 MEMPHIS, TN 38103
 901 572 2554
 HALTOMENGINEERING.COM

ELECTRICAL ENGINEER:
 CANP ENGINEERING, INC.
 7953 STAGE HILL BLVD, SUITE 107
 BARTLETT, TN 38033
 901 379 6762
 CANPENG.COM

CODE CONSULTANT:
 CODE SOLUTIONS GROUP, LLC
 1910 MADISON AVE, SUITE 23
 MEMPHIS, TN 38104
 901 552 5772
 CODESOLUTIONSGROUP.COM



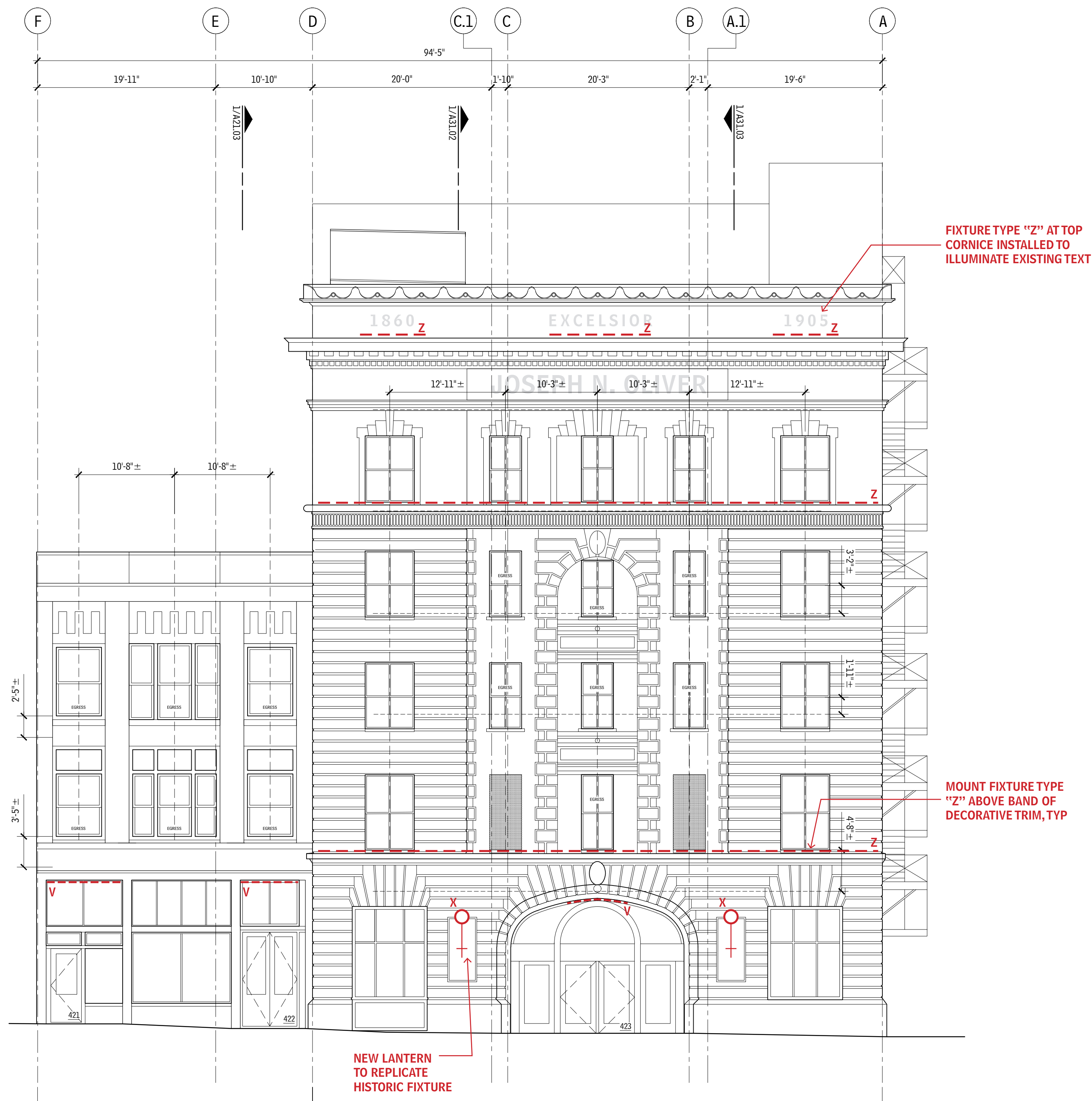
99-105 S FRONT
 99 SOUTH FRONT STREET
 MEMPHIS, TN 38103
 MULTI-FAMILY, MIXED-USE RENOVATION

1 JULY 2019 - DD RELEASE
 11 NOV 2019 - INTERNAL COORD RELEASE
 10 DEC 2019 - REVISION 01
 2 JUNE 2020 - REVISION 05
 13 NOVEMBER 2020 - REVISION 06
 2 DECEMBER 2020 - REVISION 07
 19 APRIL 2021 - REVISION 08

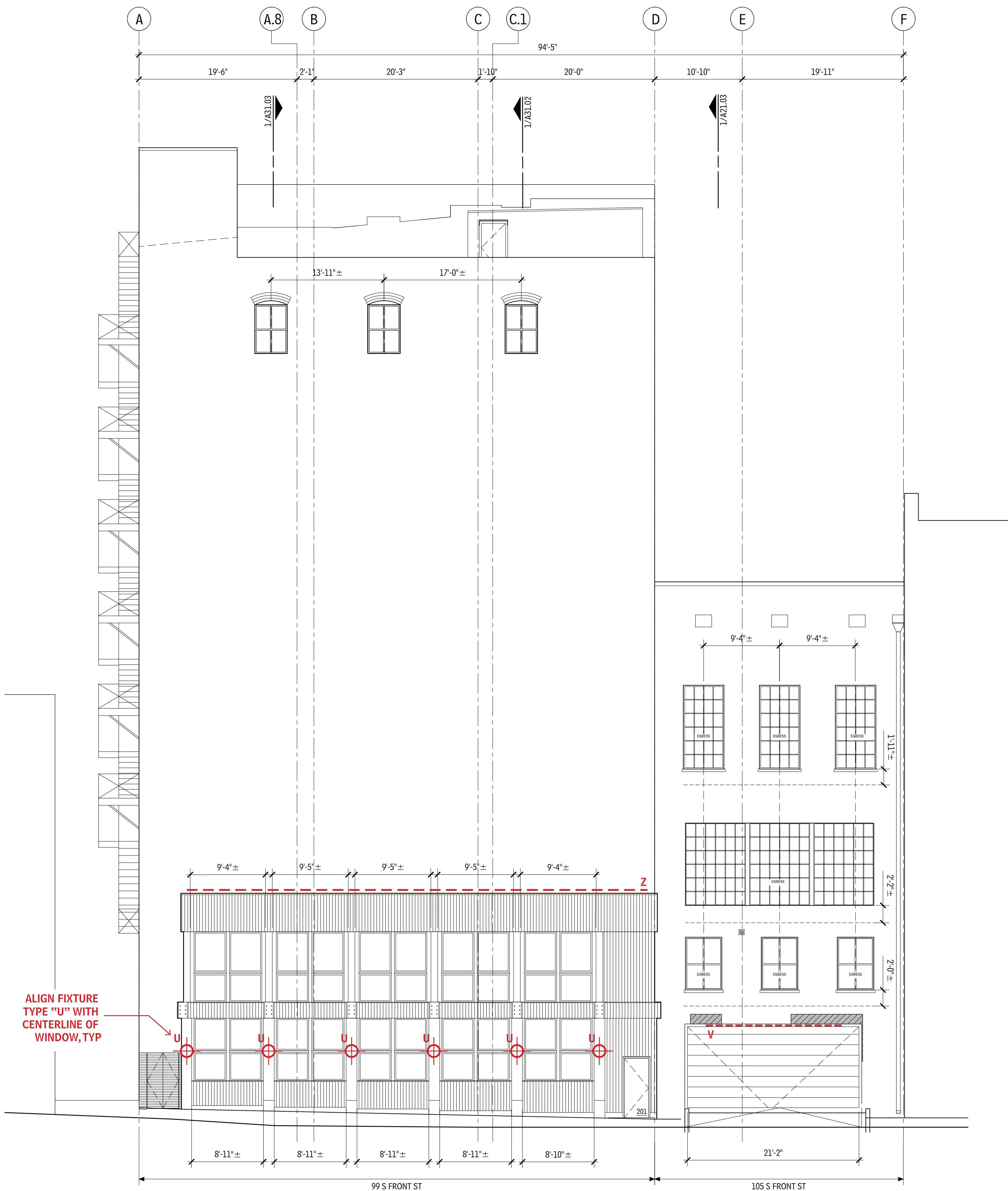
19 MAY 2021
 DRB APPLICATION 02

LIGHTING LEGEND

MARK	TYPE
T	WALL-MOUNTED FIXTURE
U	WALL-MOUNTED UP/DOWNLIGHT
V	LINEAR DOWNLIGHT
W	SUSPENDED LIGHTING
X	WALL-MOUNTED FIXTURE
Z	BUILDING UPLIGHTING



1 EAST ELEVATION
SCALE: 1/8" = 1'-0"



2 WEST ELEVATION
SCALE: 1/8" = 1'-0"

NOTE: FINAL QUANTITIES OF FIXTURE "Z" TO BE COORDINATED AFTER PRICING EFFORT. LINEAR FOOTAGE OF FIXTURE MAY BE REDUCED AS NEEDED.

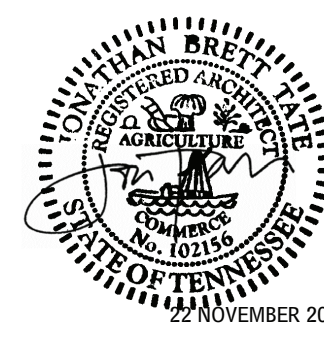
OJT
OFFICE OF JONATHAN TATE
1336 MAGAZINE STREET, SUITE 1
NEW ORLEANS, LOUISIANA 70119
504 383 4203
OFFICE@OJT.COM

STRUCTURAL ENGINEER:
CHAD STEWART & ASSOCIATES, INC.
9700 VILLAGE CIRCLE, SUITE 300
LAKELAND, TN 38002
901 280 7890
CSASTRUCTURES.COM

MECHANICAL, PLUMBING, AND FIRE SUPPRESSION ENGINEER:
HALTOM ENGINEERING, LLC
495 HILBERY STREET
MEMPHIS, TN 38103
901 575 2554
HALTOMENGINEERING.COM

ELECTRICAL ENGINEER:
CANUP ENGINEERING, INC.
7953 STAGE HILL BLVD, SUITE 107
BARTLETT, TN 38133
901 379 9762
CANUPENG.COM

CODE CONSULTANT:
CODE SOLUTIONS GROUP, LLC
1910 MADISON AVE, SUITE 21
MEMPHIS, TN 38104
901 552 5772
CODESOLUTIONSGROUP.COM



99-105 S FRONT
99 SOUTH FRONT STREET
MEMPHIS, TN 38103
MULTI-FAMILY, MIXED-USE RENOVATION

1 JULY 2019 - DD RELEASE
1 NOV 2019 - INTERNAL COORD RELEASE
10 DEC 2019 - REVISION 01
2 JUNE 2020 - REVISION 05
13 NOVEMBER 2020 - REVISION 06
2 DECEMBER 2020 - REVISION 07
19 APRIL 2021 - REVISION 08

19 MAY 2021
DRB APPLICATION 02

LIGHTING LEGEND

MARK	TYPE
T	WALL-MOUNTED FIXTURE
U	WALL-MOUNTED UP/DOWNLIGHT
V	LINEAR DOWNLIGHT
W	SUSPENDED LIGHTING
X	WALL-MOUNTED FIXTURE
Z	BUILDING UPLIGHTING



1 NORTH ELEVATION
SCALE: 1/8" = 1'-0"

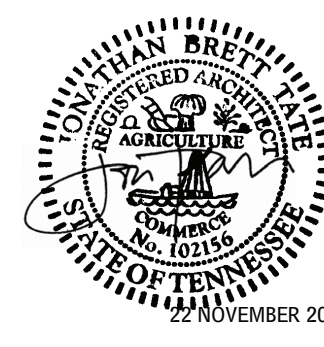
OJT
OFFICE OF JONATHAN TATE
1336 MAGAZINE STREET, SUITE 1
NEW ORLEANS, LOUISIANA 70112
504 283 4203
OFFICE@OJT.COM

STRUCTURAL ENGINEER:
CHAD STEWART & ASSOCIATES, INC.
9700 VILLAGE CIRCLE, SUITE 300
LAKELAND, TN 38002
901 260 7890
C&ASTRUCTURES.COM

MECHANICAL, PLUMBING, AND
FIRE SUPPRESSION ENGINEER:
HALTOM ENGINEERING, LLC
495 HILBERY STREET
MEMPHIS, TN 38103
901 525 2354
HALTOMENGINEERING.COM

ELECTRICAL ENGINEER:
CANPENG ENGINEERING, INC.
7953 STAGE HILL BLVD, SUITE 107
BARTLETT, TN 38133
901 379 9762
CANPENG.COM

CODE CONSULTANT:
CODE SOLUTIONS GROUP, LLC
1910 MADISON AVE, SUITE 23
MEMPHIS, TN 38104
901 552 5772
CODESOLUTIONSGROUP.COM



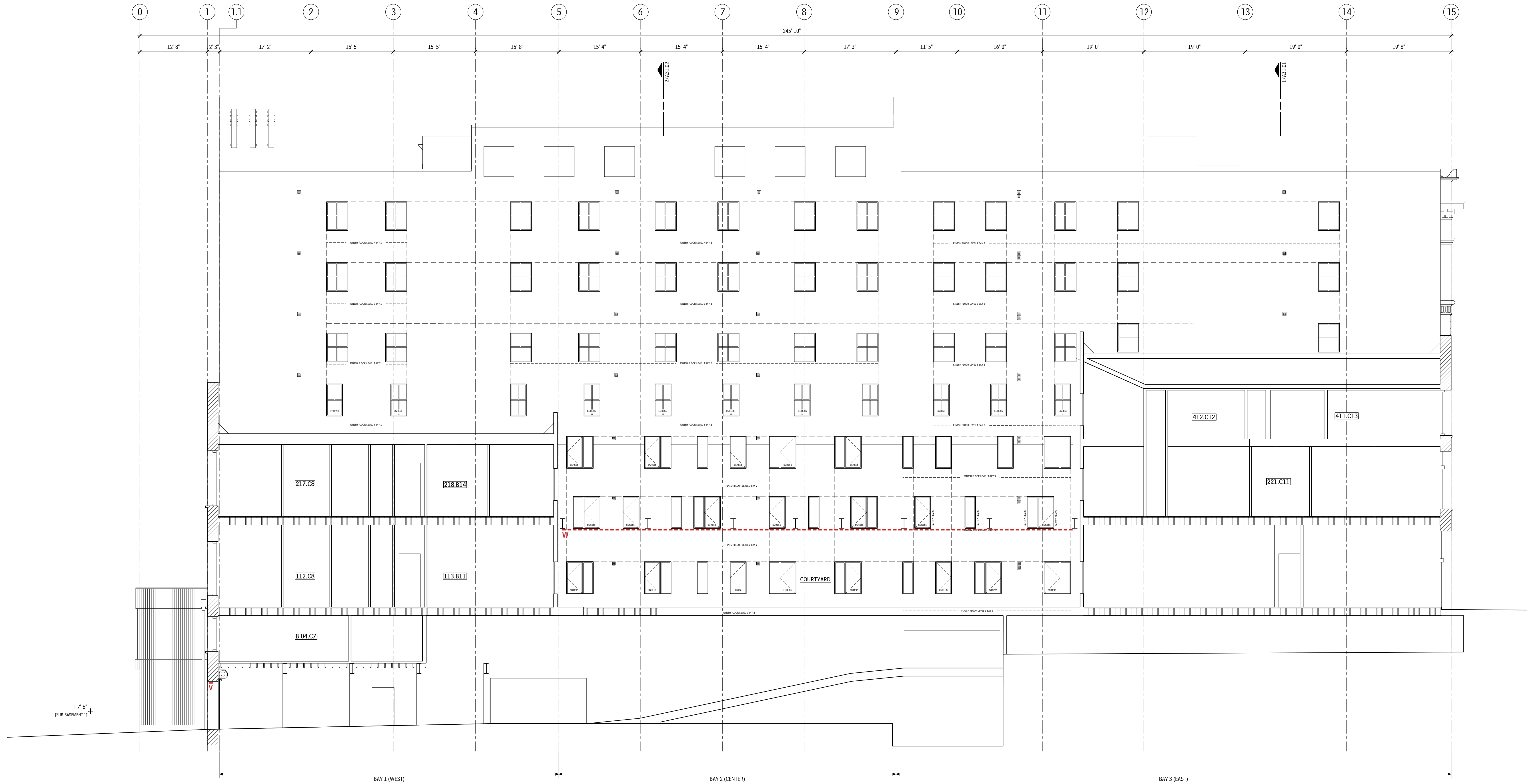
99-105 S FRONT
99 SOUTH FRONT STREET
MEMPHIS, TN 38103
MULTI-FAMILY, MIXED-USE RENOVATION

1 JULY 2019 - DD RELEASE
1 NOV 2019 - INTERNAL COORD RELEASE
10 DEC 2019 - REVISION 01
2 JUNE 2020 - REVISION 05
13 NOVEMBER 2020 - REVISION 06
2 DECEMBER 2020 - REVISION 07
19 APRIL 2021 - REVISION 08

19 MAY 2021
DRB APPLICATION 02

LIGHTING LEGEND

MARK	TYPE
T	WALL-MOUNTED FIXTURE
U	WALL-MOUNTED UP/DOWNLIGHT
V	LINEAR DOWNLIGHT
W	SUSPENDED LIGHTING
X	WALL-MOUNTED FIXTURE
Z	BUILDING UPLIGHTING



1 SOUTH ELEVATION
SCALE: 1/8" = 1'-0"

OJT

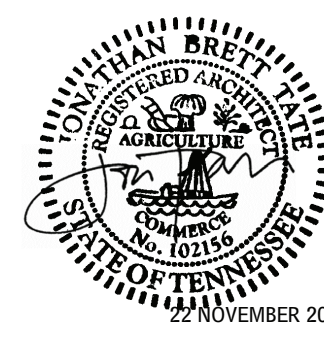
OFFICE OF JONATHAN TATE
1336 MAGAZINE STREET, SUITE 1
NEW ORLEANS, LOUISIANA 70112
504 283 4203
OFFICE@OJT.COM

STRUCTURAL ENGINEER:
CHAD STEWART & ASSOCIATES, INC.
9700 VILLAGE CIRCLE, SUITE 300
LAKELAND, TN 38002
901 280 7890
C&SSTRUCTURES.COM

MECHANICAL, PLUMBING, AND
FIRE SUPPRESSION ENGINEER:
HALTOM ENGINEERING, LLC
495 MULBERRY STREET
MEMPHIS, TN 38103
901 525 2554
HALTOMENGINEERING.COM

ELECTRICAL ENGINEER:
CANUP ENGINEERING, INC.
7953 STAGE HILL BLVD, SUITE 107
BARTLETT, TN 38133
901 379 9762
CANUPENG.COM

CODE CONSULTANT:
CODE SOLUTIONS GROUP, LLC
1910 MADISON AVE, SUITE 23
MEMPHIS, TN 38104
901 552 5772
CODESOLUTIONSGROUP.COM



99-105 S FRONT

99 SOUTH FRONT STREET
MEMPHIS, TN 38103
MULTI-FAMILY, MIXED-USE RENOVATION

- 1 JULY 2019 - DD RELEASE
- 1 NOV 2019 - INTERNAL COORD RELEASE
- 22 NOV 2019 - CONSTRUCTION RELEASE
- 10 DEC 2019 - REVISION 01
- 2 JUNE 2020 - REVISION 05
- 13 NOVEMBER 2020 - REVISION 06
- 2 DECEMBER 2020 - REVISION 07
- 19 APRIL 2021 - REVISION 08

19 MAY 2021
DRB APPLICATION 02

BockLighting

Vaportight Wall Mount

VW / VWB SERIES SPECIFICATIONS

APPLICATION: Approved for use in all indoor and outdoor locations exposed to moisture and rain, corrosive fumes, non-explosive vapors and gases or non-combustible dusts. Vapor tight and rain tight. May be mounted directly to a wall or octagon box.

LIGHT SOURCE: Standard incandescent fixture for medium base "A" lamp. Fixtures can be equipped with an optional ballast housing for up to 42 watt compact fluorescent or 150 watt metal halide or high pressure sodium. See ballast option on page VT-12.

HOUSING CONSTRUCTION: Wall mount type with optional heavy duty die-cast aluminum junction box, tapped 1/2" or 3/4". Die-cast threaded aluminum globe fitter assembly with exterior threads for optional die-cast aluminum screw-on guard.

FINISH: Standard finish is textured natural aluminum. Optional powder coat finishes are available at an additional cost. See ordering guide for complete list of finishes.

GUARD: Threaded, die-cast aluminum with stainless steel, headless hex type set-screw.

GLOBE: Threaded for easy lamp replacement. Standard globe is clear glass. Optional glass globes include prismatic, opal, blue, green, amber or red. Lexan globes in clear or colors are also available. Cast guard option is not available with Lexan globes. See ordering guide for complete list of globes.

SOCKET: Standard units include a medium base, glazed porcelain, 4KV pulse rated lamp holder with nickel plated screw shell and spring loaded center contact. Compact fluorescent ballast option includes a GX24Q-3 / GX24Q-4 universal 4-pin socket for 26, 32 or 42 watt triple tube lamps.

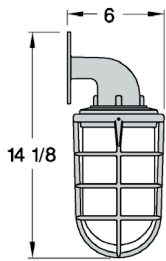
HARDWARE: All fasteners are stainless steel.

GASKETS: Memory retentive, die-cut silicone for superior sealing and heat resistance.

APPROVALS: Listed with Underwriter's Laboratories for WET LOCATIONS. C-UL Listed for Canada.

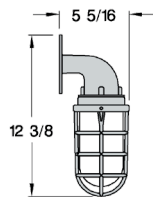


VW Series 300W



VW30-42-G

VW Series 150W



VW15-41-G

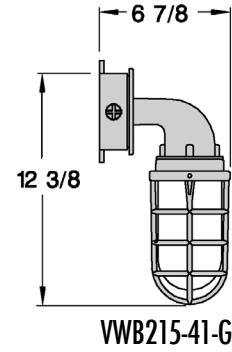
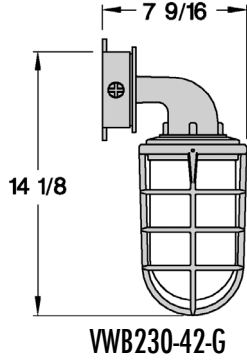
Glass Globes



Lexan Globes



VAPORTIGHT WALL MOUNT WITH OPTIONAL CAST BOX



VAPORTIGHT WALL MOUNT ORDERING GUIDE

Series	Hub Size	Fixture Size	Socket	Optional Globe Type	Guard Option	Color Finish
VW	N/A	15-41 150 Watt Max. with 3-1/2" Clear Glass Globe	MED - Standard Medium Base, E26	No. Description Max. Watts P Prismatic Glass 150/300 O Opal Glass 150/200 A Amber Glass 100/200 B Blue Glass 100/200 G Green Glass 100/200 R Red Glass 100/200	G Screw-On Die-Cast Guard	G0 - Black G1 - White G2 - Red G3 - Yellow G4 - Blue G5 - Green G6 - Brown G7 - Verdigris G8 - Dark Bronze G9 - Silver G10 - Dark Green
VWB	2 1/2" Threads 3 3/4" Threads	30-42 300 Watt Max. with 4-1/2" Clear Glass Globe	GU24 - GU24 Socket for Self Ballasted CFL, Cold Cathode, & LED	L Clear Lexan ¹ 75/150 LP Prismatic Lexan ¹ 75/150 LO Opal Lexan ¹ 60/100 LA Amber Lexan ¹ 60/100 LB Blue Lexan ¹ 60/100 LG Green Lexan ¹ 60/100 LR Red Lexan ¹ 60/100	WG Wire Guard Guard Option is Not Available with Lexan Globe	More Colors on pg. VT-11 Consult Factory for Custom colors or color matching.

VW - 15 - 41 - O - G - G1

ULEE-30031

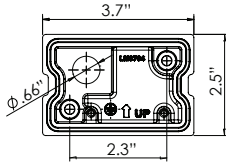
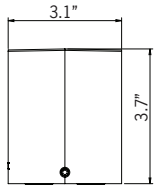
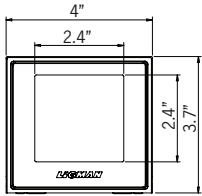
Leeds 1 Small Surface Up/Downlight



TYPE "U"



2x8w LED 2x795 Lumens
IP65 • Suitable For Wet Locations
IK07 • Impact Resistant
Weight 2.4 lbs



Mounting Detail

3" or 4" junction box cover plate is available as an option

Construction

Aluminum

Less than 0.1% copper content - Marine Grade 6060 extruded & LM6 Aluminum High Pressure die casting provides excellent mechanical strength, clean detailed product lines and excellent heat dissipation.

Pre paint

8 step degrease and phosphate process that includes deoxidizing and etching as well as a zinc and nickel phosphate process before product painting.

Memory Retentive -Silicon Gasket

Provided with special injection molded "fit for purpose" long life high temperature memory retentive silicon gaskets. Maintains the gaskets exact profile and seal over years of use and compression.

Thermal management

LM6 Aluminum is used for its excellent mechanical strength and thermal dissipation properties in low and high ambient temperatures. The superior thermal heat sink design by Ligman used in conjunction with the driver, controls thermal below critical temperature range to ensure maximum luminous flux output, as well as providing long LED service life and ensuring less than 10% lumen depreciation at 50,000 hours.

Surge Suppression

Standard 10kv surge suppressor provided with all fixtures.

BUG Rating

Contact Factory

Finishing

All Ligman products go through an extensive finishing process that includes fettling to improve paint adherence.

Paint

UV Stabilized 4.9Mil thick powder coat paint and baked at 200 Deg C. This process ensures that Ligman products can withstand harsh environments. Rated for use in natatoriums.

Inspired by Nature Finishes

The Inspired by nature Finishing is a unique system of decorative powder coating. Our metal decoration process can easily transform the appearance of metal or aluminum product into a wood grain finish.

This patented technology enables the simulation of wood grain, and even marble or granite finish through the use of decorative powder coating.

The wood grain finish is so realistic that it's almost undistinguishable from real wood, even from a close visual inspection. The system of coating permeates the entire thickness of the coat and as a result, the coating cannot be removed by normal rubbing, chipping, or scratching.

The Coating Process

After pre-treatment the prepared parts are powder coated with a specially formulated polyurethane powder. This powder provides protection against wear, abrasion, impact and corrosion and acts as the relief base color for the finalized metal decoration.

The component is then wrapped with a sheet of non-porous film with the selected decoration pattern printed on it using special high temperature inks.

This printed film transfer is vacuum-sealed to the surface for a complete thermo print and then transferred into a customized oven. The oven transforms the ink into different forms within the paint layer before it becomes solid. Finally, the film is removed, and a vivid timber look on aluminum remains.

Wood grain coating can create beautiful wood-looking products of any sort. There are over 300 combinations of designs currently in use. Wood grains can be made with different colors, designs, etc.

Our powder coatings are certified for indoor and outdoor applications and are backed by a comprehensive warranty. These coatings rise to the highest conceivable standard of performance excellence and design innovation.

Added Benefits

- Resistance to salt-acid room, accelerated aging
- Boiling water, lime and condensed water resistant
- Anti-Graffiti, Anti-Slip, Anti-Microbial, Anti-Scratch
- Super durable (UV resistant)
- TGIC free (non-toxic)

Hardware

Provided Hardware is Marine grade 316 Stainless steel.

Anti Seize Screw Holes

Tapped holes are infused with a special anti seize compound designed to prevent seizure of threaded connections, due to electrolysis from heat, corrosive atmospheres and moisture.

Crystal Clear Low Iron Glass Lens

Provided with tempered, impact resistant crystal clear low iron glass ensuring no green glass tinge.

Optics & LED

Precise optic design provides exceptional light control and precise distribution of light. LED CRI > 80

Lumen - Maintenance Life

L80 /B10 at 50,000 hours (This means that at least 90% of the LED still achieve 80% of their original flux)

Clean, beautiful, surface wall fixtures with class leading performance. Minimalist form, yet the most powerful and flexible lighting tool of its type, offering packages up to 4000 lumens and microVos technology.

A range of small, square and rectangular, ADA compliant wall mounted luminaires with options of upward or downward light distributions. Ideally suited to illuminate the wall and surfaces in front of wall and for light accents on vertical surfaces using high efficiency LED's. The Leeds is suitable for indoor and outdoor applications and provides a clean, visually appealing solution for small, unobtrusive wall mounted luminaires.

This luminaire is available in 3 different sizes and in combinations of down, up or up/down light distributions.

This fixture utilizes microVos technology, meaning the ability to do Type I,II,III,IV & V distributions as well as hybrid distributions to suit the designer's requirements.

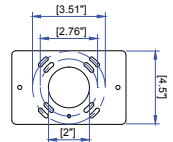
Using the microVos optics allows for very wide spacing to mounting height ratios, while still providing perfect uniformity and code compliant light levels.

The Leeds has been IDA Dark Sky certified for cct's of 3000K or lower.

Additional Options (Consult Factory For Pricing)

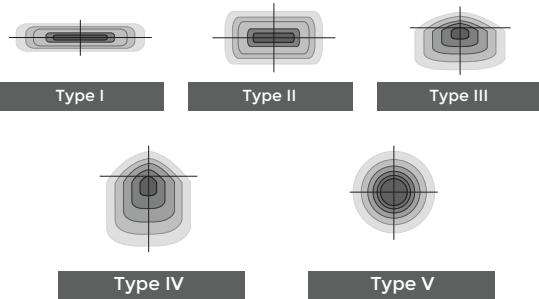


SCDT
Surface Conduit Decorative Trim



4MP
4" Octagonal J-Box
Mounting Plate

Ligman's micro Variable Optical System provides the ability to interchange, mix & rotate optics to provide specific light distributions for optimized spacing and uniformity.



ULEE-30031

Leeds 1 Small Surface Up/Downlight



TYPE "U"



PROJECT		DATE	
----------------	--	-------------	--

QUANTITY		TYPE		NOTE	
-----------------	--	-------------	--	-------------	--

ORDERING EXAMPLE || ULEE - 30031 - 2x8w - T2 - T3 - W30 - 02 - 120/277v - Options

ULEE-30031						
LAMP	BEAM UP	BEAM DOWN	LED COLOR	FINISH COLOR	VOLTAGE	
2x8w LED 2x795 Lumens	T1 - Type I Distribution T2 - Type II Distribution T3 - Type III Distribution T4 - Type IV Distribution M - Medium 30" W - Wide 56" EW - Extra Wide 99"x102"	T1 - Type I Distribution T2 - Type II Distribution T3 - Type III Distribution T4 - Type IV Distribution M - Medium 30" W - Wide 56" EW - Extra Wide 99"x102"	W27 - 2700K W30 - 3000K W35 - 3500K W40 - 4000K	01 - BLACK RAL 9011 02 - DARK GREY RAL 7043 03 - WHITE RAL 9003 04 - METALLIC SILVER RAL 9006 05 - MATTE SILVER RAL 9006 06 - LIGMAN BRONZE 07 - CUSTOM RAL	120v For 277v or higher voltage, please contact factory	

INSPIRED BY NATURE FINISHES

- SW01 - OAK FINISH
- SW02 - WALNUT FINISH
- SW03- PINE FINISH
- DF - DOUGLAS FIR FINISH
- CW - CHERRY WOOD FINISH
- NW - NATIONAL WALNUT FINISH
- SU01 - CONCRETE FINISH
- SU02 - SOFTSCAPE FINISH
- SU03 - STONE FINISH
- SU04 - CORTEN FINISH

THERE IS AN ADDITIONAL COST FOR THESE FINISHES

--	--	--

ADDITIONAL OPTIONS

- NAT - Natatorium Rated
- 4MP - 4" Octagonal J-Box Mounting Plate
- SCDT - Surface Conduit Decorative Trim
- AMB - Turtle Friendly Amber LED
- F - Frosted Lens

More Custom Finishes Available Upon Request

Consult factory for pricing and lead times



3" square rectilinear LED fixture with flush lens for outdoor applications

Project: _____ Type: _____



FEATURES

The BSW214 is a linear LED luminaire for outdoor lighting applications. The 3" square extrusion is fitted with a flush, frosted lens and machined aluminum end caps.

SPECIFICATIONS

Fixture constructed of an extruded aluminum, extruded, frosted acrylic lens and machined aluminum end caps

Standard finishes as shown below

Available for surface or wall mounting in nominal lengths of 2'-8" single fixtures and continuous runs for surface and wall mount applications

Housing provided with a Ø7/8 hole for back feeding

Standard integral 120-277V wet location driver offered with 0-10V dimming or non-dim

Standard outputs are 390, 775 and 1000 lumens per foot

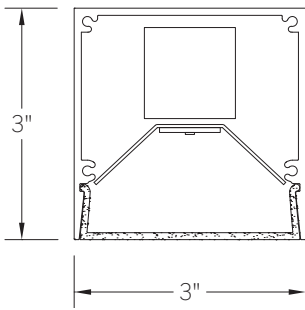
LEDs available in 2700K, 3000K, 3500K and 4000K, within a 3 step MacAdam ellipse, all with 80+ CRI typical

Life: 50,000 hours L₇₀

Limited five year warranty

UL and C-UL listed for wet locations

SECTION



PERFORMANCE

NOMINAL LENGTH	OUTPUT	LUMENS/ft.	WATTS/ft.	LUMINAIRE LUMENS	EFFICACY (LPW)
4'	L: low	390	4.0	1554	98
	R: regular	775	8.0	3104	97
	H: high	1000	10.3	3995	97

Note: All data reflects fixtures with 3500K LEDs



BSW214 -

<p>NOMINAL FIXTURE LENGTH*</p> <p>2: 24-5/8"</p> <p>3: 36-5/8"</p> <p>4: 48-5/8"</p> <p>5: 60-5/8"</p> <p>6: 72-5/8"</p> <p>7: 84-5/8"</p> <p>8: 96-5/8"</p>	<p>CORRELATED COLOR TEMPERATURE</p> <p>27: 2700K-80+ CRI</p> <p>30: 3000K-80+ CRI</p> <p>35: 3500K-80+ CRI</p> <p>40: 4000K-80+ CRI</p>	<p>DRIVER</p> <p>IN: non-dimming</p> <p>ID: 0-10V dimming, 5%</p>	<p>LIGHT OUTPUT (lumens per foot)</p> <p>L: low - 390</p> <p>R: regular - 775</p> <p>H: high - 1000</p>	<p>MOUNT</p> <p>SM: surface mount</p> <p>WD: wall mount - direct</p> <p>WI: wall mount - indirect</p>	<p>RUN CONFIGURATION</p> <p>SN: single</p> <p>ST: starter</p> <p>AD: adder</p> <p>TR: terminator</p>	<p>FINISH</p> <p>AW: architectural white (semi-matte)</p> <p>WH: white (semi-gloss)</p> <p>BL: black (semi-matte)</p> <p>MB: matte black</p> <p>ESS: environmental satin silver</p> <p>BZ: bronze</p> <p>PR: primer</p> <p>CF: consult factory for custom finish</p>
---	--	--	--	--	---	---

* Actual dimension dependent on run configuration

MOUNTING

	ORDERING CODE	DESCRIPTION
	SM	<p>SURFACE MOUNT</p> <ul style="list-style-type: none"> • Use appropriate fastener through $\varnothing 3/16"$ holes in housing • Power entry through $\varnothing 7/8"$ hole on the back at an end
	WD	<p>WALL MOUNT – DIRECT ORIENTATION</p> <p>Mounting option includes:</p> <ul style="list-style-type: none"> • 1-7/8" H x 4-1/2" W aluminum bracket projects the fixture housing 3/4" from the wall surface
	WI	<p>WALL MOUNT – INDIRECT ORIENTATION</p> <p>Mounting option includes:</p> <ul style="list-style-type: none"> • 1-7/8" H x 4-1/2" W aluminum bracket projects the fixture housing 3/4" from the wall surface

EPA CALCULATIONS

LENGTH ORDERING CODE	EPA
2	0.99 ft ²
3	1.46 ft ²
4	1.94 ft ²
5	2.42 ft ²
6	2.89 ft ²
7	3.36 ft ²
8	3.84 ft ²

TYPE "W"



DecoStrand™ Lighting

Create a distinctive and unique look to your indoor/outdoor space with DecoStrand accent lighting. With the variety of reflectors and available lighting options, DecoStrand is certain to make an impactful impression in any setting.

Large Selection of LED, Incandescent and Specialty Lamps

Plug and Sockets Allow for System Expansion and Continual Run Capabilities

2-Year Limited Warranty



Reflector sold separately



Low Maintenance

2 YR
WARRANTY

2-Year Warranty



Contact Your Customer Care Specialist For Pricing, Orders And Technical Support.

800.677.3334 www.halcolighting.com

Commercial DecoStrand™ Lighting

Product #: _____ Type: _____
 Project: _____ Date: _____
 Comments: _____ Initials: _____

Specifications

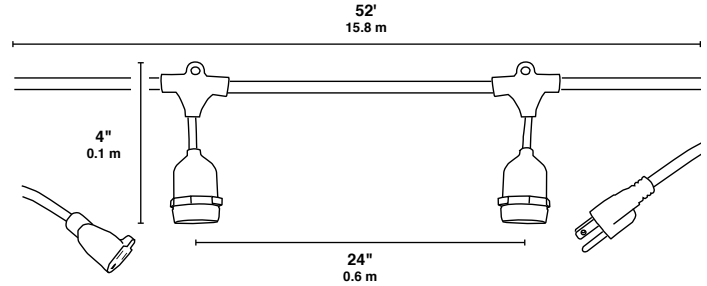
- 52' cable length with 25, 4" medium base (E26) socket drops
- Heavy duty 14 AWG SJTW molded silicone resin cable for maximum durability, indoors and out
- Fully grounded, three-conductor wire provides peace of mind safety
- Three conductor socket on one end allows for system expansion and continual run capabilities
- Available reflectors (sold separately) create uniquely styled appearance
- DecoStrand features one of the industry's broadest offering of LED, Incandescent and Specialty lamp options with the Halco Lighting family of dependable lamps

Electrical

- Voltage: 120V Only
- 15A Capacity Circuit Typical
- Maximum Lamp Wattage: 50 Watts
- 3 – Prong grounded plug
- 3 – Prong grounded receptacle

Dimensions

- Cord Length: 52 ft. (15.8 m)
- Number of Sockets: 25
- Socket Spacing: 2 ft. (0.6 m)
- Socket Drop Length: 4 in. (0.1 m)



Lamp Wattage Range	Total System Watts	Total # of DecoStrands per Circuit*
40-50 Watts	1000 - 1250	1
17-25 Watts	425 - 625	2
13-16 Watts	325 - 400	3
11-12 Watts	275 - 300	4
9-10 Watts	225 - 250	5
8 Watts	200	6
7 Watts	175	7
6 Watts	150	8
5 Watts	125	9
4 Watts	100	10

*Circuit capacity based on typical 15 Amps system. Larger circuit sizes may be able to accommodate more Decostrand strings. Consult an Electrical Engineer for complete circuit load confirmation.



Ordering Information



Product #	Product Code	Description	Weight	Pkg. Qty.
99962	DSL/52254M/3G-BK	Decorative Strand Lighting 52ft long 25 E26 sockets 4in drops 3 wire Grounded	8.55 lbs	1/1

Warranty – Commercial / Industrial: This product is warranted for 2 years from the date of purchase.

TYPE "W"

DecoStrand™ Lighting

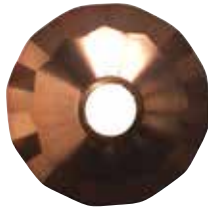
Product #: _____ Type: _____
 Project: _____ Date: _____
 Comments: _____ Initials: _____

DecoStrand™ Reflectors:

- Decorative reflector for use on DecoStrand decorative string lighting systems
- Adds a unique and charming appearance for a variety of environments
- Formed steel or aluminum in a variety of attractive designs
- Available in natural, copper, antique brass, textured black and textured bronze finishes
- Easily mounts to the DecoStrand socket, without tools, in seconds



Natural



Copper



Antique Brass



4" Textured Bronze



7.5" Textured Bronze



4" Textured Black



7.5" Textured Black

Ordering Information



Product #	Product Code	Description	Weight	Pkg. Qty.
99963	DSL/FSR-NF	Decorative Strand Steel Reflector Natural Finish	0.20	1/25
99604	DSL/FSR-CU	Decorative Strand Steel Reflector Copper Finish	0.20	1/25
99605	DSL/FSR-AB	Decorative Strand Steel Reflector Antique Brass Finish	0.20	1/25
99606	DSL/PSH040-TZ	4" Straight Hat DecoStrand Reflector Textured Bronze Finish	0.05	1/12
99607	DSL/PSH040-TB	4" Straight Hat DecoStrand Reflector Textured Black Finish	0.05	1/12
99608	DSL/PSH075-TZ	7.5" Straight Hat DecoStrand Reflector Textured Bronze Finish	0.15	1/12
99609	DSL/PSH075-TB	7.5" Straight Hat DecoStrand Reflector Textured Black Finish	0.15	1/12

NEW ITEM
 Warranty – Commercial / Industrial: This product is warranted for 2 years from the date of purchase.

Recommended Lamps

Product #	Product Code	Watts	Color Temp.
80522*	S14CL1C/827/LED	1.4	2700K
20006	ST18ANT40	40	2500K
9051	S14CL11	11	-
20002	A21ANT40	40	2500K

Product #	Product Code	Watts	Color Temp.
81140*	S14AMB2ANT/822/LED	2	2200K
81139*	S14CL2ANT/827/LED	2	2700K
81132**	ST19AMB5ANT/722/LED	5	2200K
81129**	A19AMB4ANT/722/LED	4.5	2200K

* Wet location listed.
 ** Damp location listed.
 For the complete ProLED offering of lamps see HalcoLighting.com

TYPE "X"
Original fixture



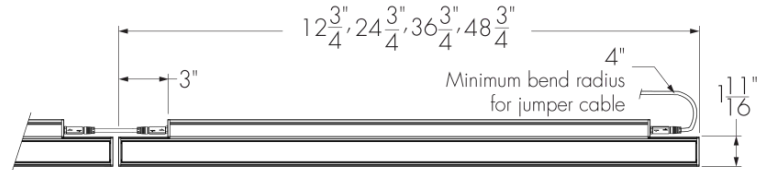
TYPE "X"
Original fixture



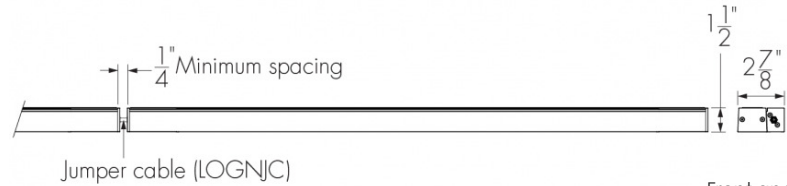
TYPE "X"
Proposed fixture,
without bracket



Project Name _____ Qty _____
 Type _____ Catalog / Part Number _____



Top view



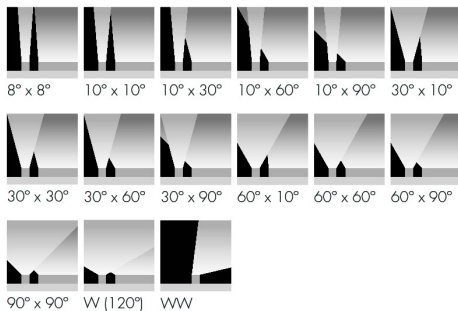
Front and side views

Photometric Summary

4ft, 4 W/ft, 4000K	Delivered output (lm)	Intensity (peak cd)
8°x8°	1,530	41,352
10°x10°	1,456	32,262
10°x30°	1,435	9,126
10°x60°	1,427	4,867
10°x90°	1,424	2,551
30°x10°	1,439	9,098
30°x30°	1,767	4,079
30°x60°	1,713	2,581
30°x90°	1,726	1,865
60°x10°	1,426	5,647
60°x60°	1,730	1,279
60°x90°	1,719	1,540
90°x90°	1,690	1,045
W (120°)	864	N/A
WW	1,524	7,393

Photometric performance is measured in compliance with IESNA LM 79-08.

Optics



Description

The Lumenfacade Nano Horizontal is a high-efficiency linear LED luminaire with a slim profile that makes it easy to conceal and integrate into architectural facades. Available in 12 in, 24 in, 36 in or 48 in sections, the Lumenfacade Nano Horizontal is the right fit for general urban structures, historical buildings and those hardest to reach places. The Lumenfacade Nano Horizontal can be configured with a wide number of options, including: optics for grazing, floodlighting, or wall washing; a choice of outputs; various color temperatures or static colors; various mounting options, finishes, accessories and controls. The Lumenfacade Nano Horizontal is also available with a unique asymmetric distribution, providing exceptional uniformity and brightness for walls and signage.

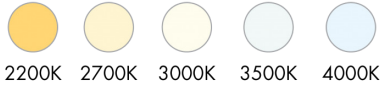
Features

Color and Color Temperature	2200K, 2700K, 3000K, 3500K, 4000K, Red, Green, Blue
Optics	8° x 8°, 10° x 10°, 10° x 30°, 10° x 60°, 10° x 90°, 30° x 10°, 30° x 30°, 30° x 60°, 30° x 90°, 60° x 10°, 60° x 60°, 60° x 90°, 90° x 90°, Wide 120°, Asymmetric Wallwash
Options	Corrosion-resistant coating for hostile environments
Power Consumption	2 W/ft, 4 W/ft
Warranty	5-year limited warranty

Performance

Delivered Output	884 lm (2 W/ft, 48 in fixture, 4000K, 30° x 30°, UCTL), 1,767 lm (4 W/ft, 48 in fixture, 4000K, 30° x 30°, UCTL)
Delivered Intensity	20,676 cd at nadir (2 W/ft, 48 in fixture, 4000K, 8° x 8°, UCTL), 41,352 cd at nadir (4 W/ft, 48 in fixture, 4000K, 8° x 8°, UCTL)
Illuminance at Distance	Minimum 1 fc at 144 ft (2 W/ft, 48 in fixture, 4000K, 8° x 8°, UCTL), Minimum 1 fc at 203 ft (4 W/ft, 48 in fixture, 4000K, 8° x 8°, UCTL)
Color Consistency	3 SDCM (2 SDCM for 8° x 8°, 10° x 10°, 10° x 30°, 10° x 60°, 10° x 90°, 30° x 10°, 60° x 10°, W and WW optics)

Colors and Color Temperatures



Controls

ON/OFF UCTL

Ratings

IP66 IK08

Certifications



Color Rendering	CRI 80+
Lumen Maintenance	L70 >90,000 hrs

Physical

Housing Material	Low copper content extruded aluminum
Lens Material	Clear tempered glass
Hardware Material	Stainless steel
End Cap Material	Machined aluminum
Gasket Material	Silicone
Surface Finish	Electrostatically applied polyester powder coat
Weight	1.5 lbs (12 in), 3.2 lbs (24 in), 4.8 lbs (36 in), 6.5 lbs (48 in)

Electrical and control

Voltage	48 VDC
Resolution (DMX/RDM)	Per fixture, 8-bit or 16-bit
Control	On/Off control, Universal control (compatible with 0-10V, DALI or DMX/RDM systems)

Environmental

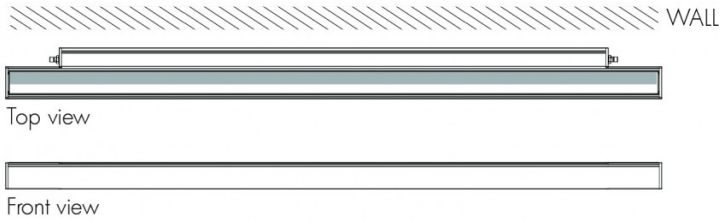
Storage Temperature	-40 °F to 185 °F (device must reach start-up temperature value before operating)
Start-up Temperature	-13 °F to 122 °F
Operating Temperature	-40 °F to 122 °F
Ingress Protection Rating	IP66
Impact Resistance Rating	IK08 (IK09 for 48 in fixtures)

Accessories (order separately)

Cables	Lumenfacade Nano Jumper Cable, Trunk Power Cable, Trunk Data Cable, Lumenfacade Nano Jumper Cable Joiner
Control Boxes	Low-Voltage Control Box, Low-Voltage Splitter Box
Optical Accessories	Lumenfacade Nano Radial Louver, Lumenfacade Nano Visor
Control Systems	Lumentone™ 2, Pharos® kit
Diagnostic and Addressing Tools	LumenID

Optical option installation details

HFR - Half-frosted lens



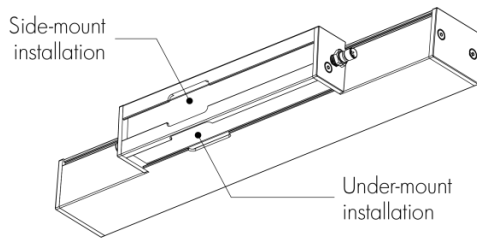
- Always position frosted side toward the wall.
- Applicable for 8° x 8°, 10° x 10° or asymmetric wallwash optics only.

WW - Asymmetric wallwash

Recommended setback from wall is 1/10 of the wall height.

Example: 2 ft setback for a 20 ft wall.

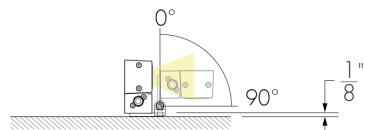
Mounting points



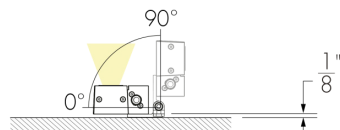
Mounting options

One mounting bracket provided for 12 in fixtures. Two mounting brackets provided for 24 in, 36 in and 48 in fixtures. See installation instructions for details.

SAMNH - Slim Adjustable Mounting Nano Horizontal

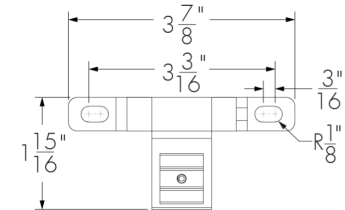


Side-mount installation

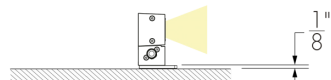


Under-mount installation

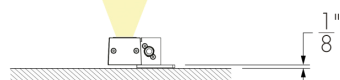
SAMNH - Mounting hole pattern



UMPNH - Fixed Mounting Nano Horizontal

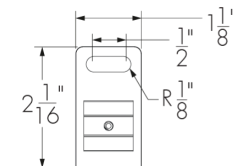


Side-mount installation

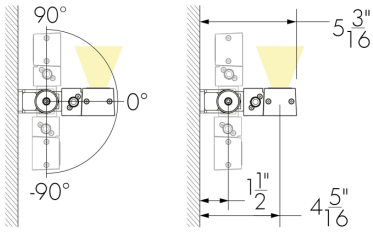


Under-mount installation

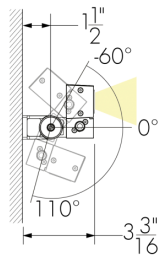
UMPNH - Mounting hole pattern



UMASNH - Universal Adjustable Mounting Nano

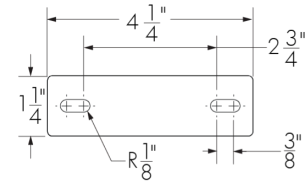


Side-mount installation

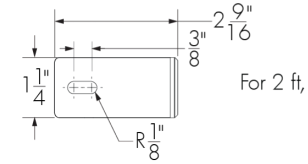


Under-mount installation

UMASNH - Mounting hole pattern

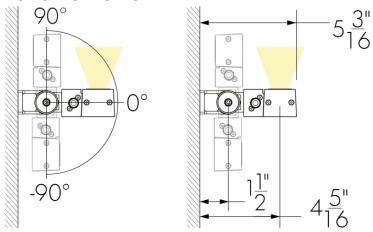


For 1 ft fixtures

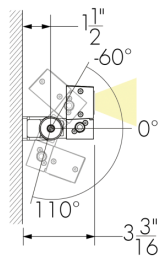


For 2 ft, 3 ft and 4 ft fixtures

WAMNH2 - Adjustable Extended Arm Mounting Nano Horizontal 2 in

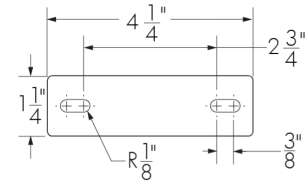


Side-mount installation

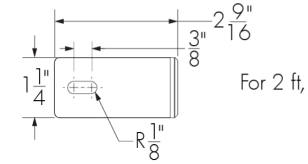


Under-mount installation

WAMNH2 - Mounting hole pattern



For 1 ft fixtures



For 2 ft, 3 ft and 4 ft fixtures