

FLATS AT OVERTON SQUARE LIGHTING APPLICATION

45 Diana Street
Memphis, TN 38104



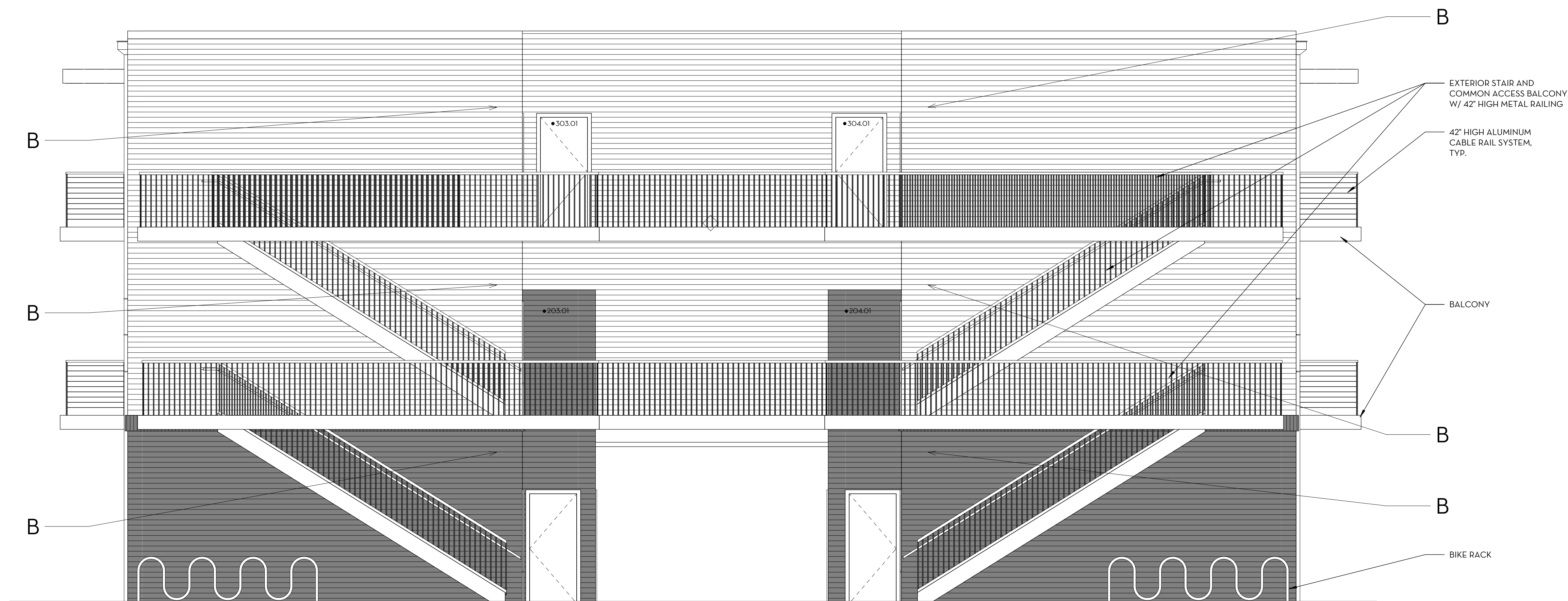
East Elevation



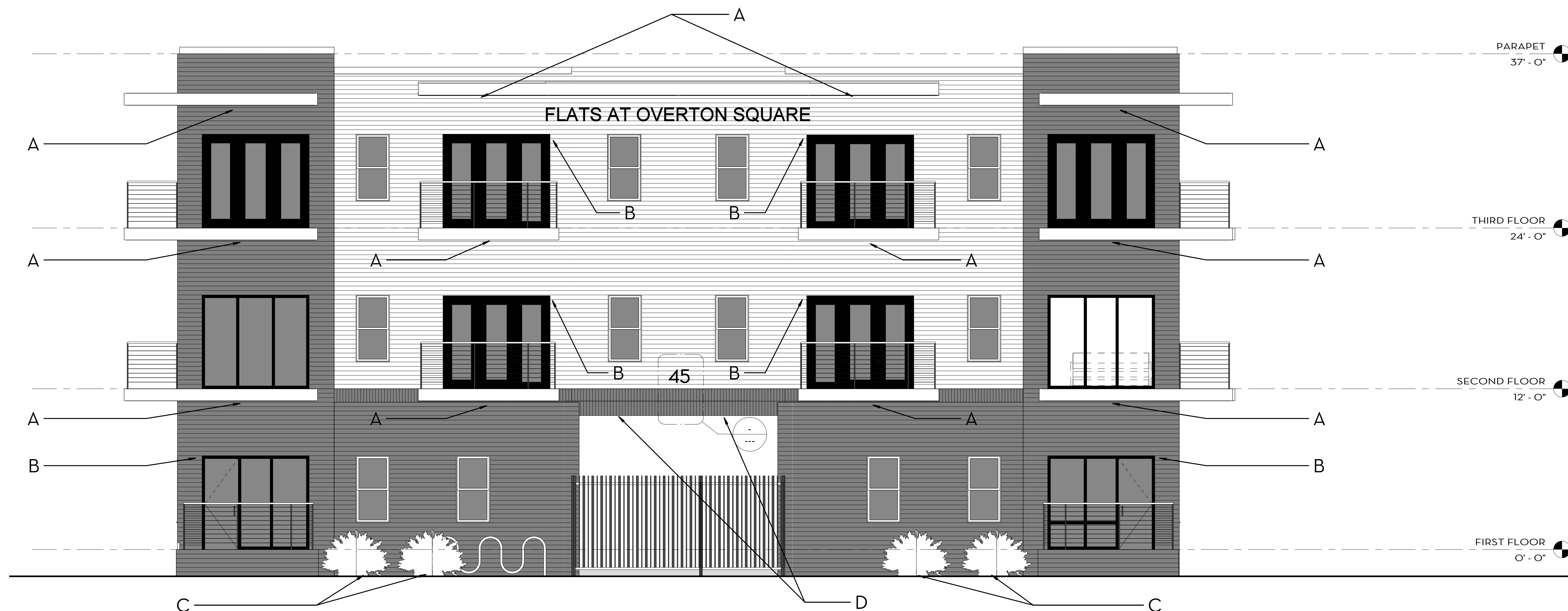
Perspective



- A. LED STRIP LIGHTING
- B. WALL SCONCE
- C. LANDSCAPE LIGHTING
- D. DOWN LIGHTING



1 WEST FACING ELEVATION LIGHT PLACEMENT
1/4" = 1'-0"



- A. LED STRIP LIGHTING
- B. WALL SCONCE
- C. LANDSCAPE LIGHTING
- D. DOWN LIGHTING

3 DIANA STREET ELEVATION LIGHT PLACEMENT
1/4" = 1'-0"

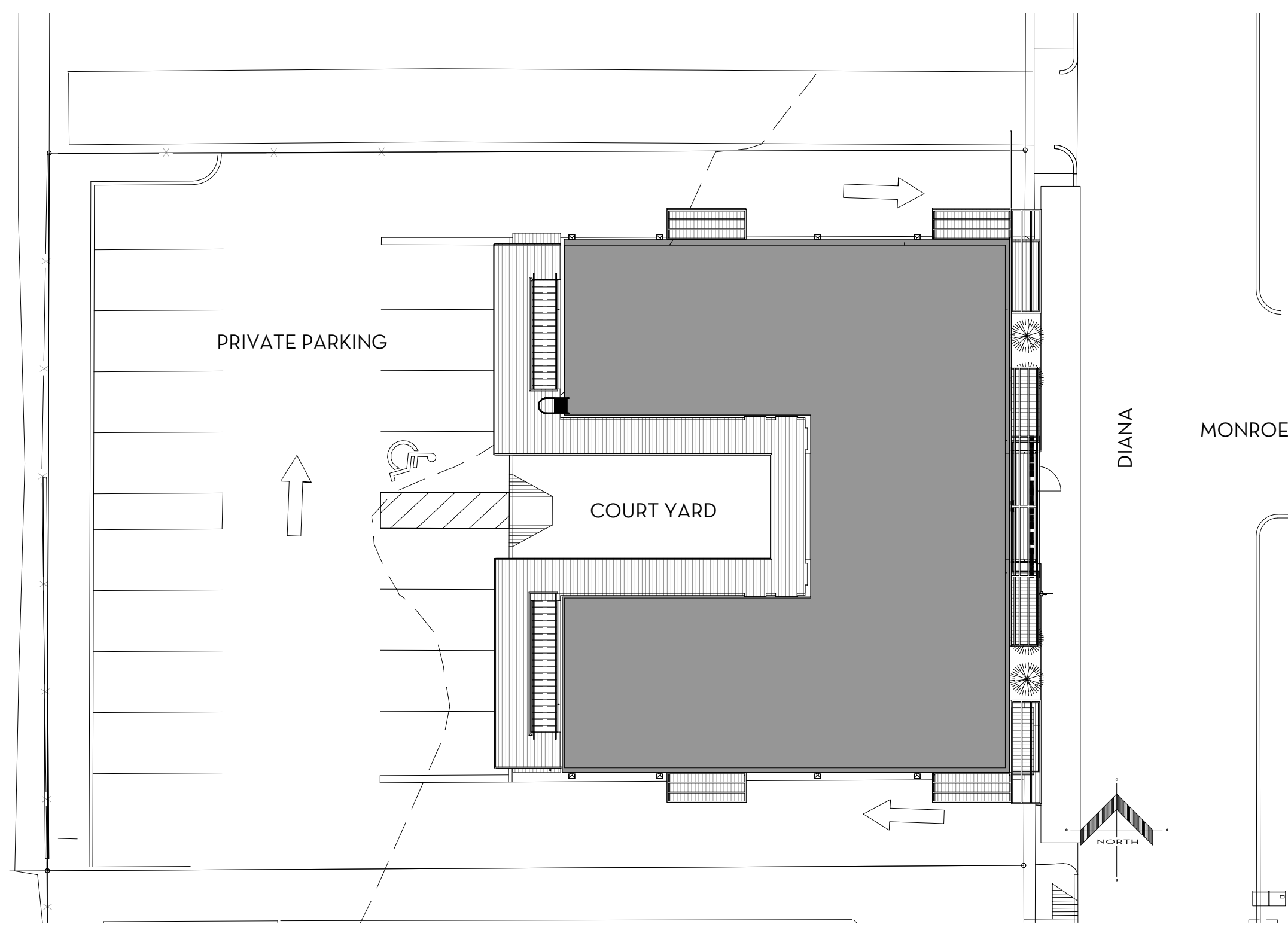


Architecture, Incorporated

109 NORTH MAIN STREET, SUITE 201, MEMPHIS, TENNESSEE 38103
(901) 526-5080 FAX: (901) 526-5081 WWW.ARCHINCMEMPHIS.COM

FLATS AT OVERTON SQUARE

1734
01/26/21



KEY PLAN
NTS

Lighting Narrative:
 The Flats at Overton Square located at 45 Diana Street will be artfully lit with four different types of light fixtures visible to the public from Union and Monroe. These four types of fixtures are LED strip lighting, wall sconces, landscape lighting, and exterior down lights. As one approaches the site from Monroe or Union Avenue, they are drawn to the building by the exterior fixtures that highlight the architectural design of the brise soleil. The brise soleil acts as an architectural element that provides shade to the individual units during the day and will reflect the artful use of a LED strip lighting at night. This fixture will provide light on the building without disturbing the tenants or causing light pollution and will be used in two locations. These locations are the numerous brise soleil and the underside of the tenant's balconies. Each individual tenant balcony will have a tenant controlled wall sconce that will give ample light for using their balcony. The exterior landscape will be softly illuminated to add additional security and a baseline of light to the front of the building. The breezeway beyond the front fence will be lit by using exterior down lights.

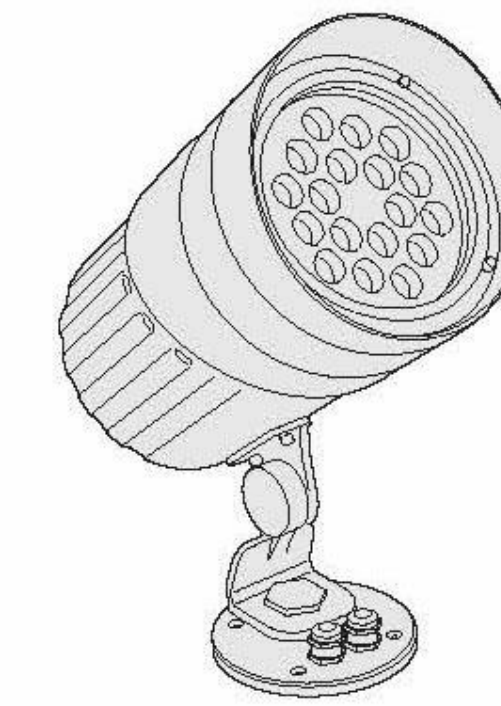
This overall lighting scheme will be the majority of the lighting of the east, south, and north elevations. The west elevation faces the private parking lot and will have security, emergency and site lighting. The courtyard and common balconies at the interior of the building will have a mix of the artful lighting and functional security and emergency lighting. The sconces from the private balconies will also be used at the front door of each unit. These will be on a photocell timer.



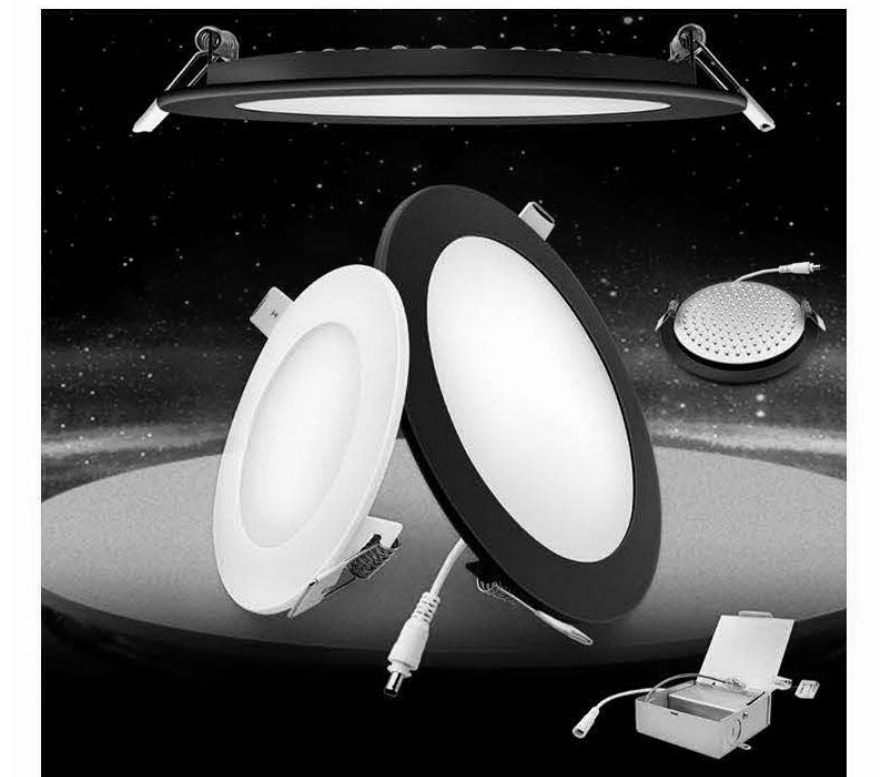
A. LED STRIP LIGHTING



B. WALL SCONCE



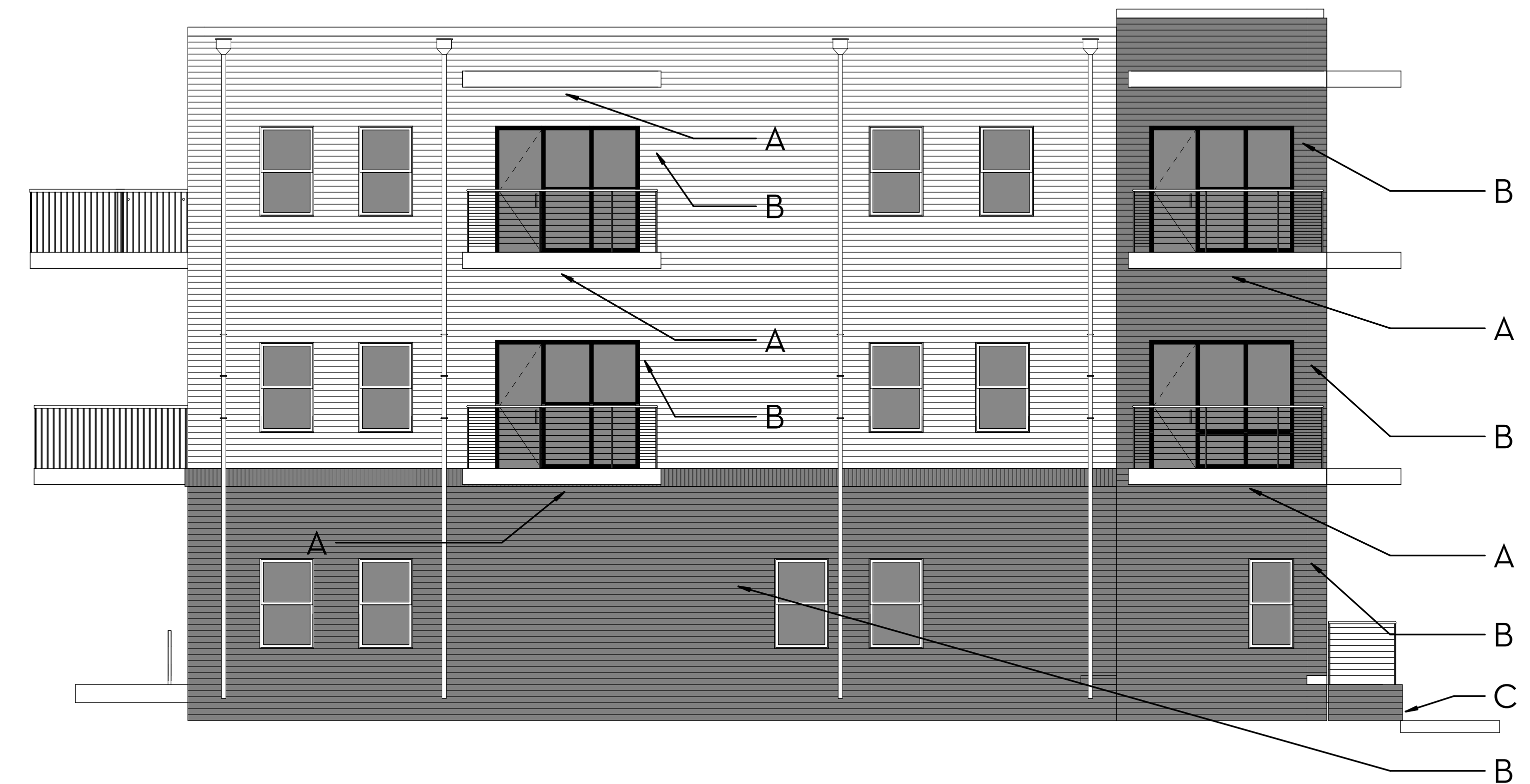
C. LANDSCAPE LIGHTING



D. DOWN LIGHTING



1 NORTH FACING ELEVATION LIGHT PLACEMENT
3/16" = 1'-0"



2 SOUTH FACING ELEVATION LIGHT PLACEMENT
3/16" = 1'-0"



Architecture, Incorporated

109 NORTH MAIN STREET, SUITE 201, MEMPHIS, TENNESSEE 38103
 (901) 526-5080 FAX: (901) 526-5081 WWW.ARCHINCMEMPHIS.COM

FLATS AT OVERTON SQUARE

1734
01/26/2021