



## DESIGN REVIEW BOARD APPLICATION

**Administered by:  
Design Review Board**

Property Address\*: \_\_\_\_\_

Applicant Name & Mailing Address: \_\_\_\_\_

Applicant Phone Number: \_\_\_\_\_ Applicant Fax Number: \_\_\_\_\_

Property Owner's Name & Mailing Address: \_\_\_\_\_

Property Owner's Phone Number: \_\_\_\_\_

The proposed work consists of the following (check all that apply):

- Sign       Renovation   
New Building       Other Exterior Alteration

Project Description:

Status of Project:

**A complete application must be submitted to the Development Department no later than three weeks before a regularly scheduled meeting of the Design Review Board.** Please submit the application with any necessary attachments to [designreview@downtownmemphis.com](mailto:designreview@downtownmemphis.com). Questions can also be e-mailed to [designreview@downtownmemphis.com](mailto:designreview@downtownmemphis.com), or you can reach Planning & Development staff at (901) 575 - 0540.

Owner/Applicant Signature: \_\_\_\_\_

Date: \_\_\_\_\_

\*Applications for properties that are located within a Landmarks Historic District may require additional approval from the Landmarks Commission. Please contact the Shelby County Division of Planning & Development at (901) 576-6601 for more information.



# GREENBELT PARK

## DOWNTOWN MEMPHIS COMMISSION DESIGN REVIEW BOARD SUBMITTAL

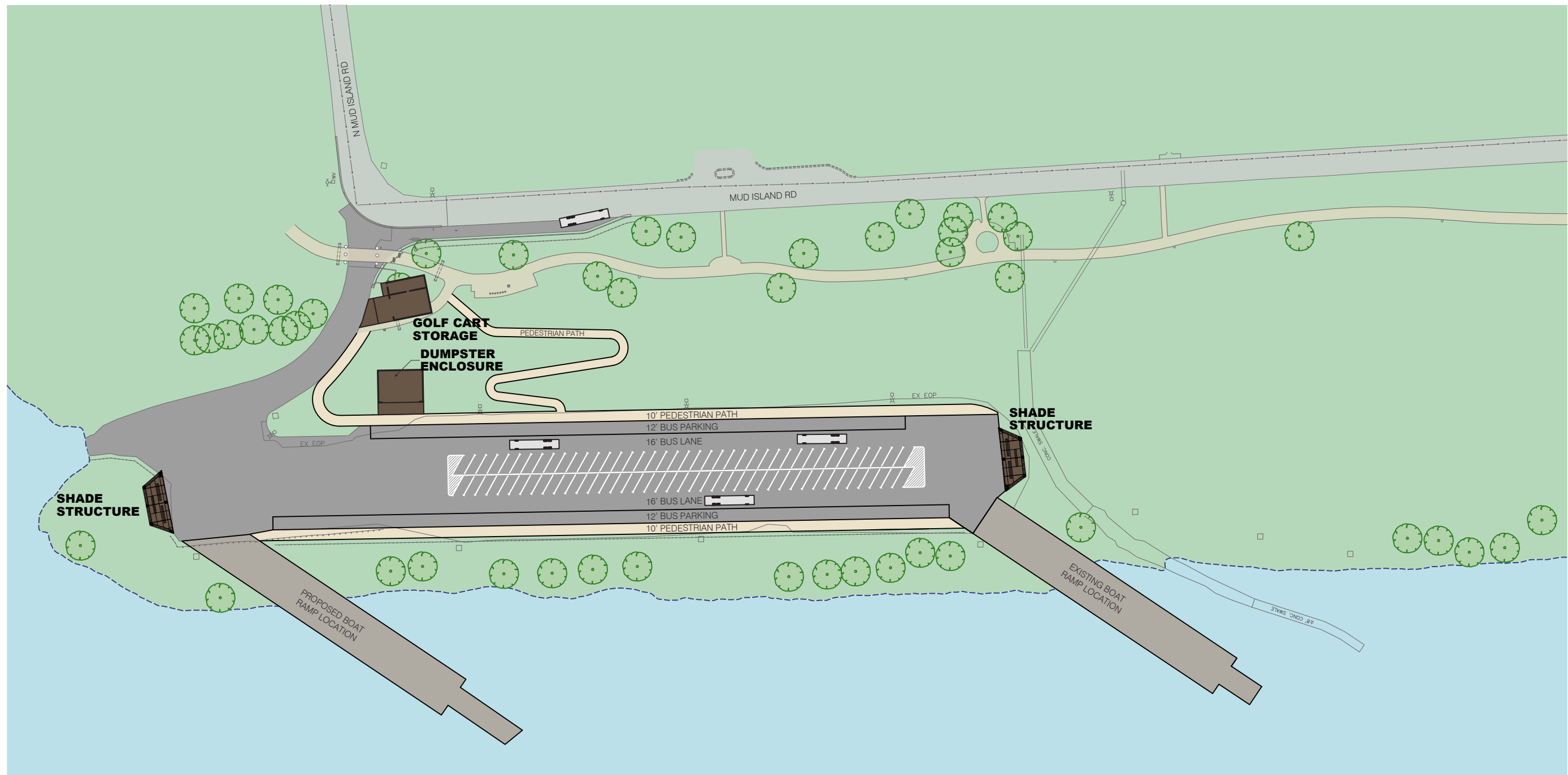


### Existing Site Plan

Scale: 1:100



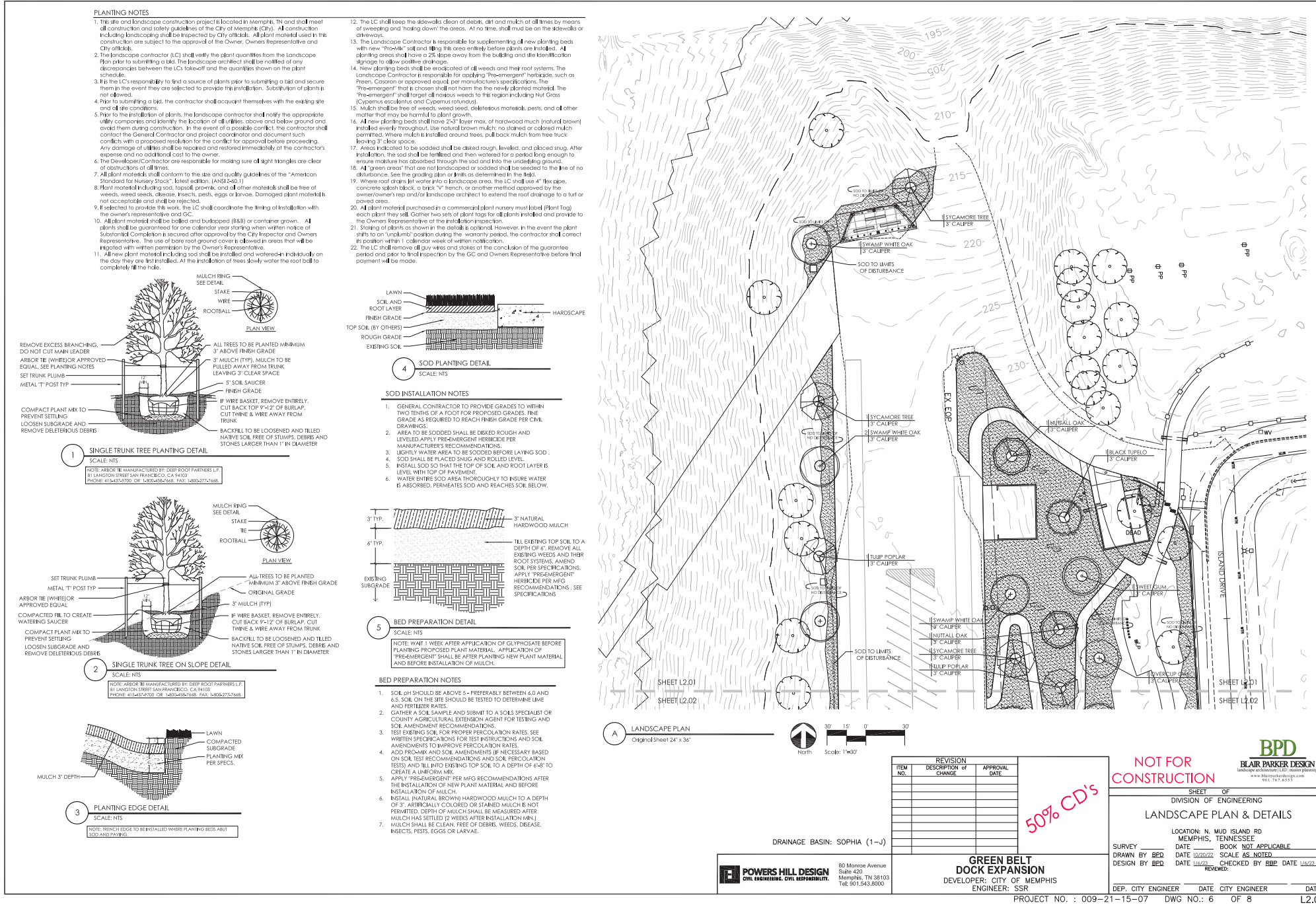
P:\SSR\2022\768.001 Greenbelt Park\1.0 Project Support\1.8 Design Parameters\1.84 Analysis\DRB submission



# Proposed Site Plan

Scale: 1:100

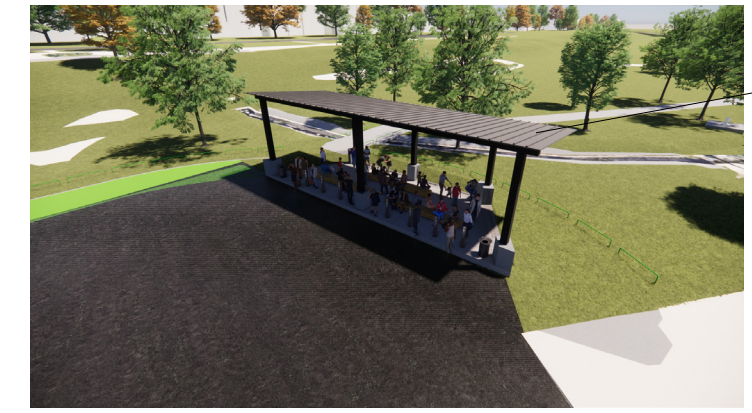




STANDING SEAM METAL ROOF PANEL



STANDING SEAM METAL ROOF PANEL



STANDING SEAM METAL ROOF PANEL

Proposed Landscape Plan

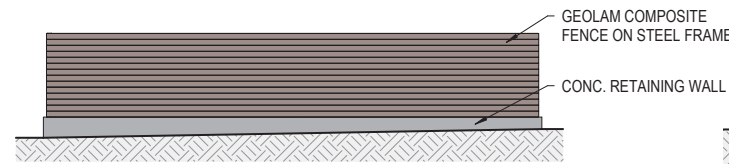
Shade Structure Renders



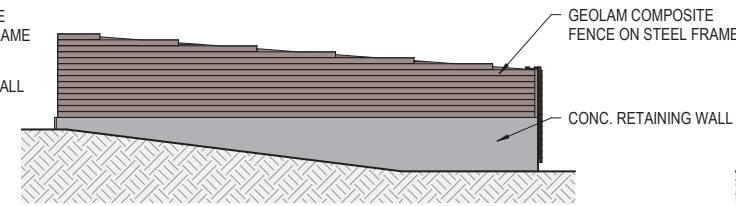
P155R12022768.001 Greenbelt Park1.0 Project Support 1.8 Design Parameters1.64 Analysis/DRB submission



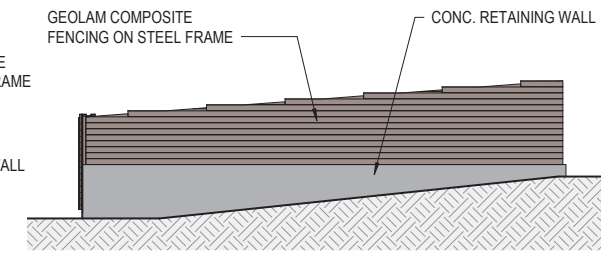
1 WEST ELEVATION- DUMPSTER ENCLOSURE  
SCALE: 1/16" = 1'-0"



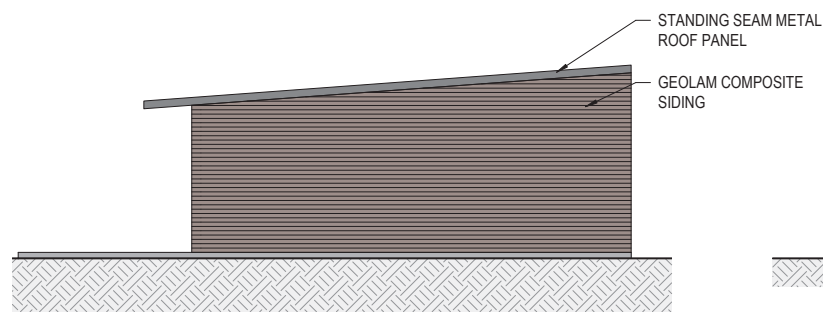
2 EAST ELEVATION- DUMPSTER ENCLOSURE  
SCALE: 1/16" = 1'-0"



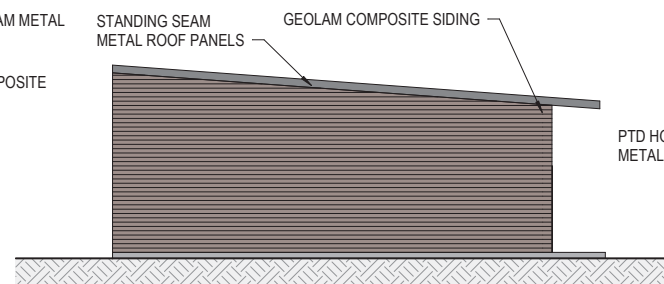
3 NORTH ELEVATION- DUMPSTER ENCLOSURE  
SCALE: 1/16" = 1'-0"



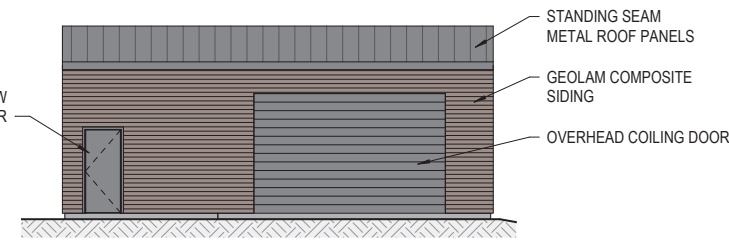
4 SOUTH ELEVATION- DUMPSTER ENCLOSURE  
SCALE: 1/16" = 1'-0"



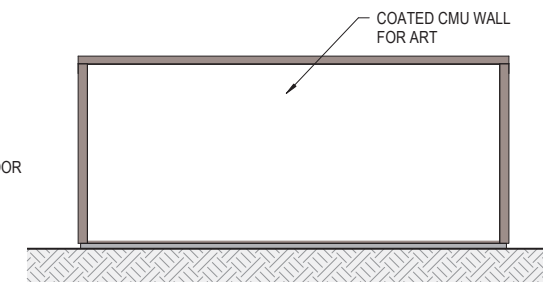
5 WEST ELEVATION- GOLF CART STORAGE  
SCALE: 1/16" = 1'-0"



6 EAST ELEVATION- GOLF CART STORAGE  
SCALE: 1/16" = 1'-0"



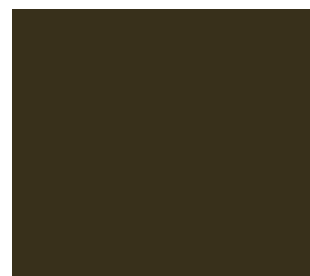
7 NORTH ELEVATION- GOLF CART STORAGE  
SCALE: 1/16" = 1'-0"



8 SOUTH ELEVATION- GOLF CART STORAGE  
SCALE: 1/16" = 1'-0"



Basis of Design - Geolam Cladding  
Vertigo 5010 - Ebony



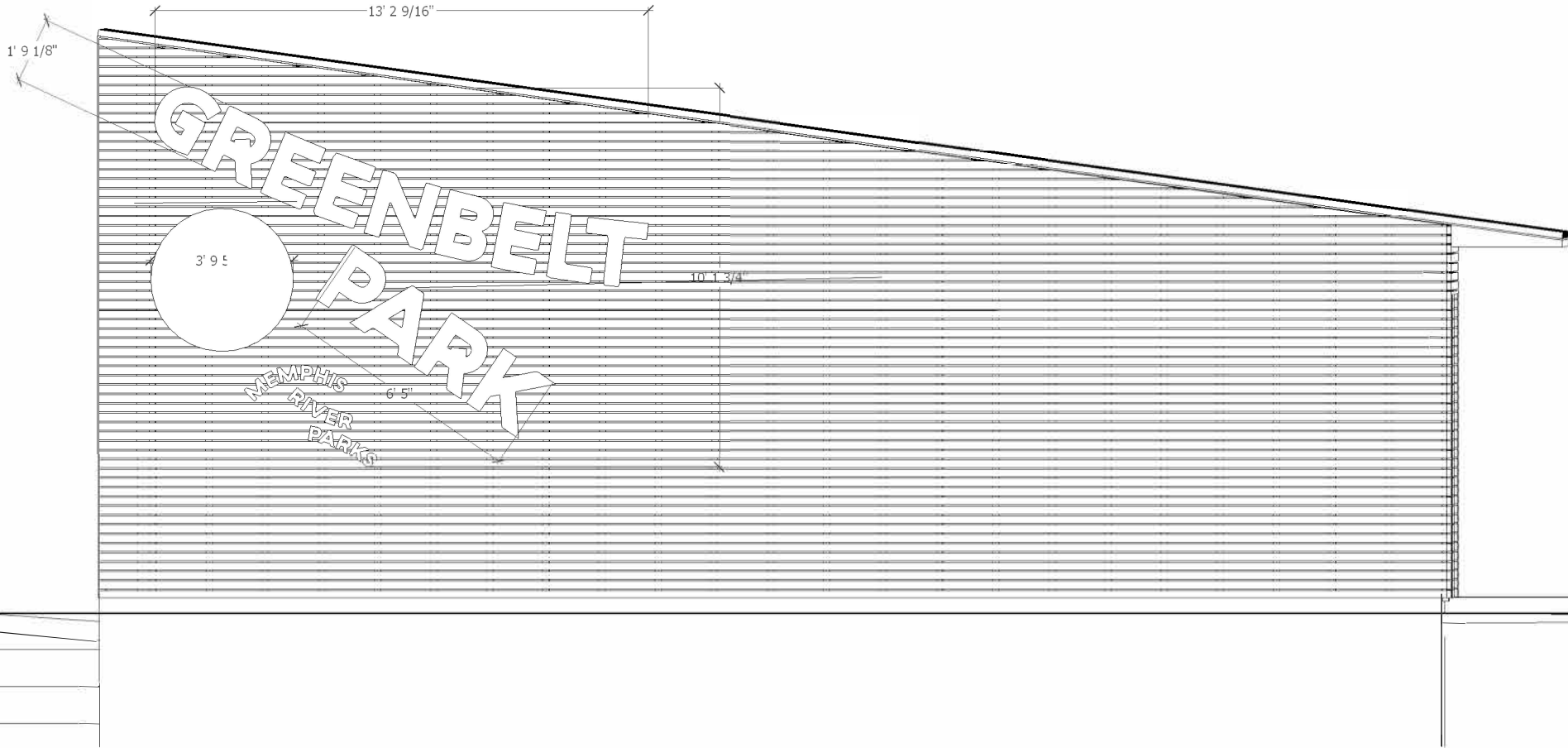
Basis of design PAC CLAD Metal Roof  
TITE-LOC Smooth - Aged Bronze



Concrete Base  
No Finish

## Elevations and Materials

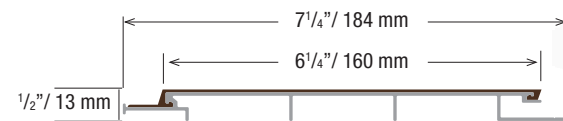






# Vertigo 5010

Hybrid Aluminum/WPC Cladding/Soffit  
Datasheet



Technical information may change without warning. Please ensure you that you reference our latest as shown on our website at www.geolaminc.com

<b>Thickness:</b> 1/2 in   13 mm	<b>Secondary moment Ix (cm<sup>4</sup>):</b> 0.56
<b>Total width:</b> 7 1/4 in   184 mm	<b>Secondary moment Iy (cm<sup>4</sup>):</b> 122.03
<b>Usable width:</b> 6 1/4 in   160 mm	<b>Section modulus Z+x (cm<sup>3</sup>):</b> 0.68
<b>Section tolerances in mm:</b> + 0.5 / - 2.0	<b>Section modulus Z-x (cm<sup>3</sup>):</b> 0.68
<b>Fire rating:</b> On request before order	<b>Section modulus Z+y (cm<sup>3</sup>):</b> 13.47
<b>Surfaces finish:</b> Sanded	<b>Section modulus Z-y (cm<sup>3</sup>):</b> 13.47
<b>Profiles fastening and installation:</b> Check our website www.geolaminc.com	<b>Core in anodized aluminum alloy:</b> A6063S-T5 Serie 6000
<b>Standard length:</b> 12 ft   3.66 m	<b>Coefficient of Thermal Expansion (20-100°C):</b> 23.4 µm/mv°C
<b>Or order custom lengths from:</b> 7 ft to 19 ft 8 in   2.15 m to 6 m	<b>Modulus of Elasticity:</b> 68.9 GPa
<b>Weight:</b> 0.80 lb/ft   1.19 kg/m	<b>Max Tensile Strength:</b> 186 Mpa
	<b>Carbon Footprint:</b> WPC : 1.54 kg CO <sub>2</sub> /Kg Profile : 9.005 kg CO <sub>2</sub> /Kg

Sanding finish and/or shading may vary between runs

**Standard Colors** - Minimum 5,000 ft for all colors  
 All standard colors stocked in the US, no minimum.

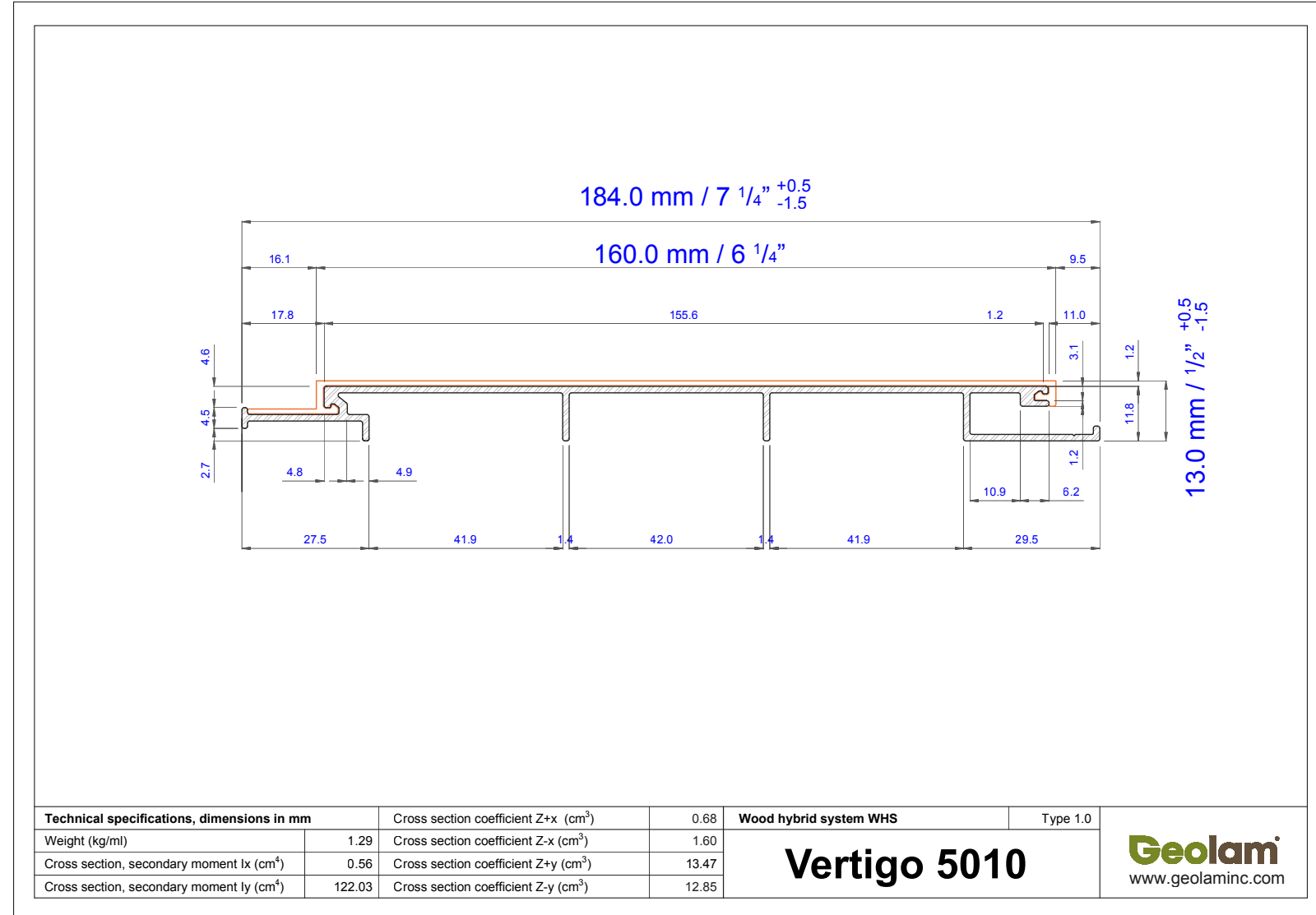


**Non-Standard Colors** - 90 day lead time - Minimum order 5,000 ft.



**Custom Colors Available** - Minimum order 6,000 ft.

www.geolaminc.com  
Toll free: 1-877-627-3530  
info@geolaminc.com



## Material Cutsheets







## TITE-LOC PANEL

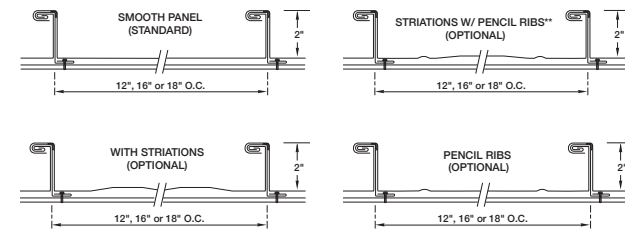
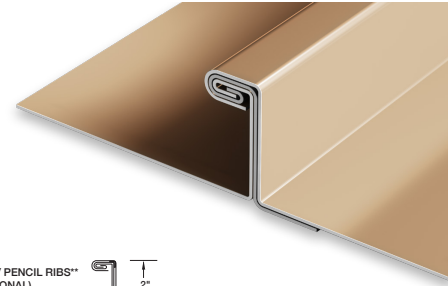
**MATERIALS**

- .032 aluminum\* 24 gauge steel\*
- .040 aluminum\* 22 gauge steel\*

**SPECS**

- 12", 16" or 18" O.C. 2" High

UL-90



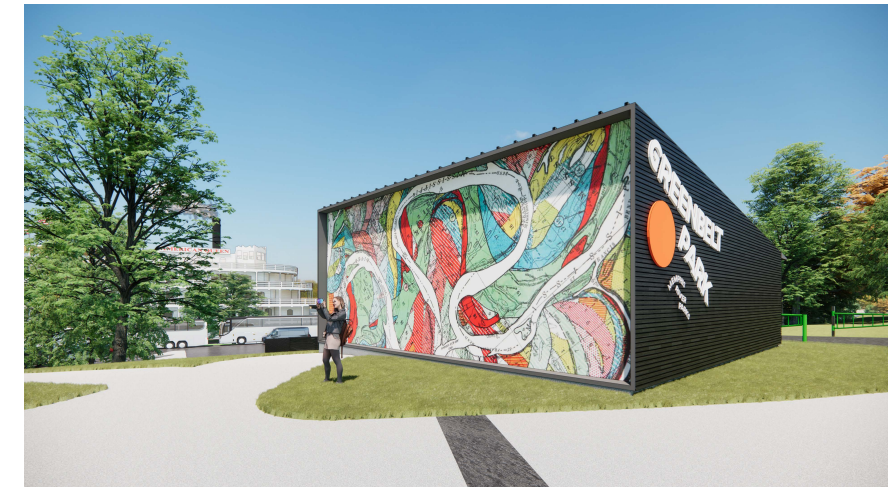
<p><b>PRODUCT FEATURES</b></p> <ul style="list-style-type: none"> <li>Pencil ribs and striations are only available by request</li> <li>30-year non-prorated finish warranty</li> <li>Maximum factory-produced panel length is 64' (check w/factory for longer lengths)</li> <li>Weather-tightness warranty available</li> </ul> <p><b>MATERIAL</b></p> <ul style="list-style-type: none"> <li>43 stocked colors (24 gauge steel)</li> <li>16 Stocked colors (22 gauge steel)</li> <li>36 stocked colors (.032 aluminum)</li> </ul>	<ul style="list-style-type: none"> <li>22 stocked colors (.040 aluminum)</li> <li>Galvalume Plus available</li> </ul> <p><b>UL CLASSIFICATION</b></p> <ul style="list-style-type: none"> <li>UL-580 Class 90 rated up to 18" O.C.</li> <li>UL-1897 wind uplift</li> <li>UL-790 Class A fire rated</li> <li>UL-263 fire resistance rated</li> <li>UL-2218 impact resistance rated</li> </ul> <p><b>TESTS (TITE-LOC PLUS ONLY)</b></p> <ul style="list-style-type: none"> <li>24 Gauge steel SSTD Missile Impact Tested - Passed</li> </ul>	<ul style="list-style-type: none"> <li>.032 Aluminum SSTD Missile Impact Tested - Passed</li> </ul> <p><b>ASTM TESTS</b></p> <ul style="list-style-type: none"> <li>ASTM E1592 tested</li> <li>ASTM E331/1646 tested</li> <li>ASTM E283/1680 tested</li> </ul>
---	---	--

\*24 gauge and 22 gauge steel and .032 and .040 aluminum panels are UL-90 classified over solid substrate. See roof deck construction in Underwriters Laboratories roofing materials and systems directory.  
 \*\* Not available in all locations. Consult PAC rep for availability.  
 Not all panel conditions are available in each Petersen branch; additional freight charges might apply if specific panel condition is required. Tite-Loc and Tite-Loc Plus panels are supplied "smooth" as standard. Customer must advise if additional panel conditions are required.

800 PAC CLAD | PAC-CLAD.COM ©2020 Petersen Aluminum

## Material Cutsheets





GOLF CART STORAGE



TRASH ENCLOSURE



GOLF CART STORAGE

Images

