

DOWNTOWN MOBILITY CENTER

SIGNAGE AND LIGHTING PACKAGE · 11.16.2022



DOWNTOWN MEMPHIS MOBILITY CENTER
A PLACE OF ARRIVAL WELCOMING VISITORS AND
RESIDENTS IN THE CENTER OF DOWNTOWN MEMPHIS

MEMPHIANS AND VISITORS TO OUR CITY CONVERGE ONTO THIS UNIQUE INTERSECTION IN DOWNTOWN MEMPHIS; LINKING THE CITY'S ENTERTAINMENT, SPORTS, COMMERCIAL, AND RESIDENTIAL AMENITIES. WHETHER EXPLORING BY FOOT, BY CAR, BY SCOOTER, BY BIKE, BY SHUTTLE OR BY TROLLEY, THE NEW MOBILITY CENTER SEEKS TO CREATE A MULTIMODAL TRANSIT DESTINATION PROVIDING A POSITIVE EXPERIENCE FOR INDIVIDUALS AND FAMILIES LIVING, WORKING, AND PLAYING DOWNTOWN.

MORE THAN A TRANSPORTATION HUB FOR DOWNTOWN MEMPHIS, THE PROJECT ACCOMMODATES THE USER FRIENDLY STORAGE OF VEHICLES, BICYCLES, MOTORCYCLES AND SCOOTERS AND PROVIDES ACCESS TO THE TROLLEY AND RIDE SHARING, ALLOWING INDIVIDUALS TO EXPLORE DOWNTOWN'S MANY AMENITIES WHICH GENERATE THE ENERGY FOR THE AREA.

THE PROJECT LOCATION PROVIDES OPPORTUNITIES TO ENHANCE THE PEDESTRIAN CONNECTION EXTENDING FROM ICONIC BEALE STREET TO THE HISTORIC RIVERFRONT AND FROM THE SOUTH MAIN ARTS DISTRICT TO THE NEWLY TRANSFORMED RENASANT CONVENTION CENTER AND PINCH DISTRICT.

THE ARCHITECTURE RESPONDS TO THE RESIDENTIAL, RETAIL AND COMMERCIAL CONTEXT, OLD AND NEW, WHILE PROVIDING ACTIVATED BUILDING FAÇADES, RETAIL FRONTS, GATHERING SPACES, AND NEW VIEWS TO THE CITY.

DOWNTOWN MEMPHIS HAS BECOME A GLOBAL DESTINATION TO EXPERIENCE MUSIC, ART, HISTORY, AND CULTURE. THE ARCHITECTURE OF DOWNTOWN IS A SOURCE OF PRIDE FOR MEMPHIANS; THROUGH THOUGHTFUL DESIGN, THE MOBILITY CENTER WILL TIE TOGETHER THE VIBRANT FABRIC OF DOWNTOWN.

THE LIGHTING AND SIGNAGE STRATEGY PLAYS A PART IN ACTIVATING THE BUILDING FAÇADES WITH A MODERN NOD TO THE HISTORIC BEALE STREET NEON SIGNAGE. PLACEMENT OF BOTH LIGHTING AND SIGNAGE DIRECTS VEHICLES TO PARKING ENTRIES AND ENCOURAGES PEDESTRIAN USE OF THE GRAND MONUMENTAL STAIR.







HISTORIC BEALE STREET - NEON SIGNAGE



ORPHEUM THEATRE - MARQUEE CANOPY



GAYOSO HOUSE, PEMBROKE SQUARE - PEABODY PLACE



BELZ PARKING GARAGE - PEABODY PLACE



HYATT CENTRIC HOTEL BEALE ST.

***NOTE:**

Future tenant signs are not included in the building signage scope. Designs at future tenant signs are shown as a placeholder. Overall design and content of future tenant signage to be determined and to be submitted separately at a later date.

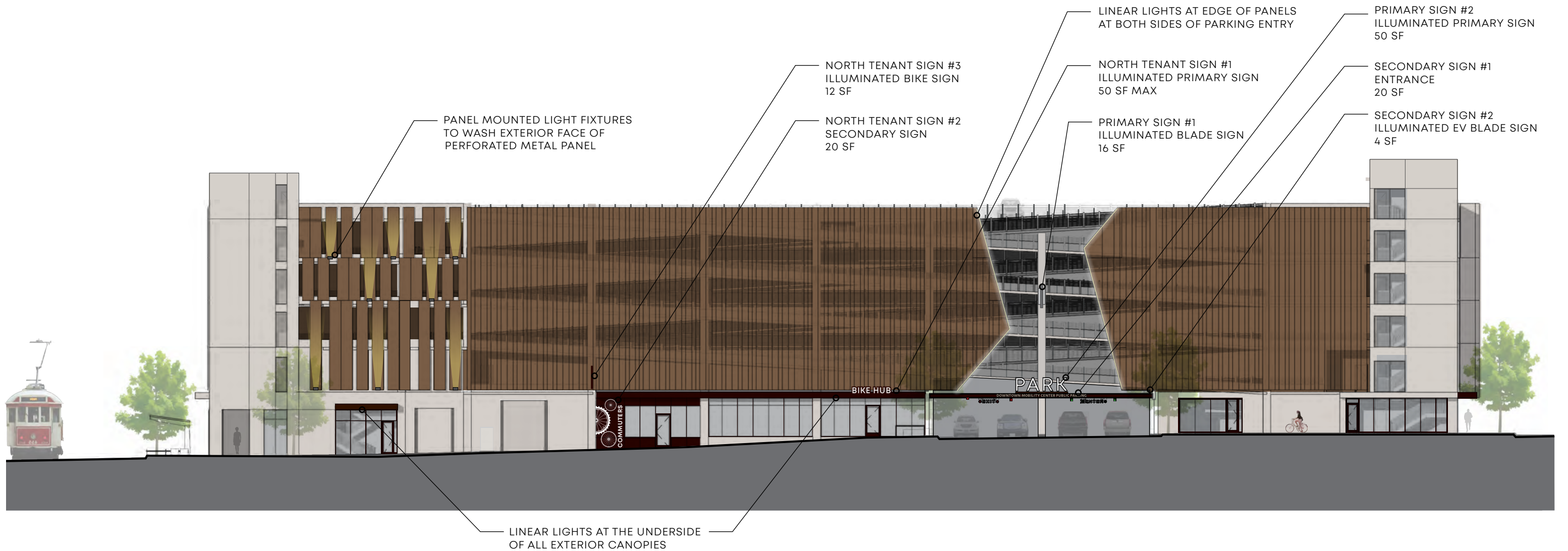
EXTERIOR SIGNAGE TOTALS

12 PARKING RELATED SIGNS

3 TENANT SIGNS

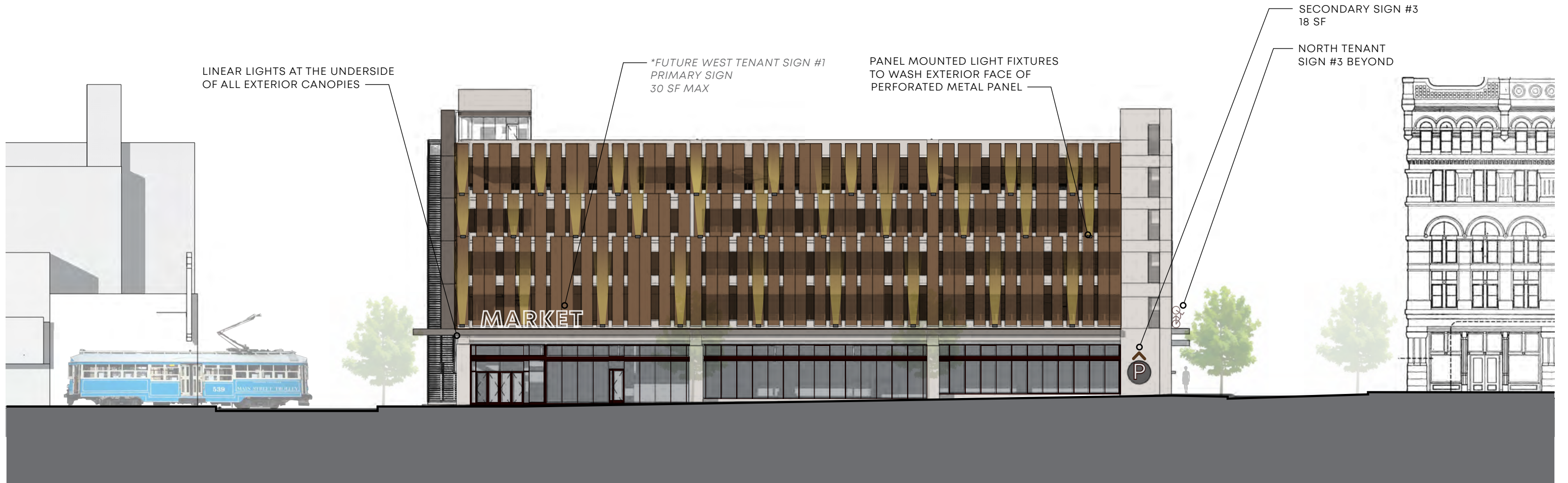
15 TOTAL EXTERIOR SIGNS EXCLUDING

4 FUTURE TENANT SIGNS



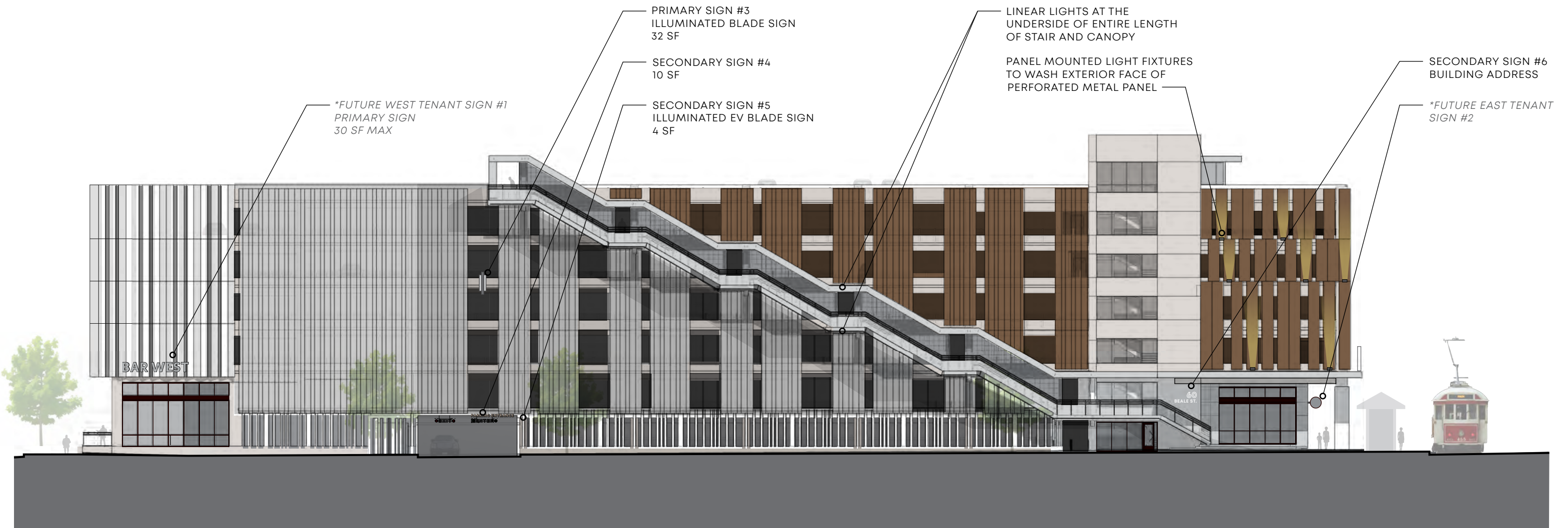
***NOTE:**

Future tenant signs are not included in the building signage scope. Designs at future tenant signs are shown as a placeholder. Overall design and content of future tenant signage to be determined and to be submitted separately at a later date.



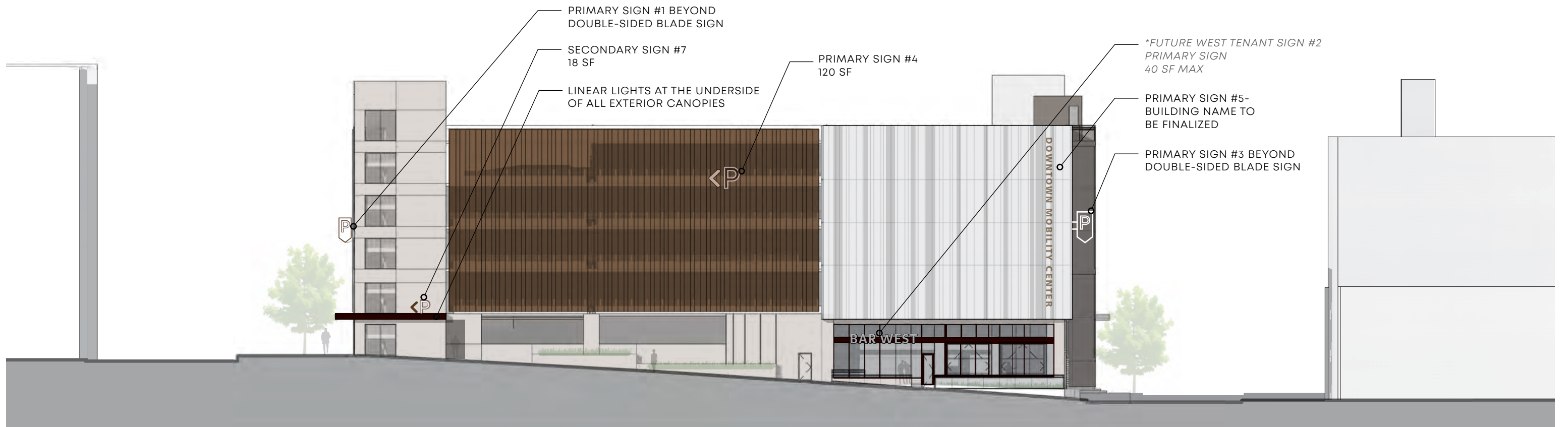
***NOTE:**

Future tenant signs are not included in the building signage scope. Designs at future tenant signs are shown as a placeholder. Overall design and content of future tenant signage to be determined and to be submitted separately at a later date.



***NOTE:**

Future tenant signs are not included in the building signage scope. Designs at future tenant signs are shown as a placeholder. Overall design and content of future tenant signage to be determined and to be submitted separately at a later date.



Project 21-39283-8
DMC Mobility Center

Submitted By
CLEAR ADVANTAGE LIGHTING INC

Catalog Number: SAF7 LED P1 RGB MVOLT 60VX30H CWL
XX XX L2 DMX BL

Note: Please confirm mounting and mounting accessories

Type
KX10

CATALOG NUMBER _____

NOTES _____

TYPE _____

SAF7 RGB SPECIALTY ARCHITECTURAL FLOOD MVOLT LED

HIGHLIGHTS

- Suitable for a variety of mounting applications including ground, wall, pole, stanchion
- 3G vibration rating for per ANSI C136.31
- DMX/RDM
- Taper-Lock technology provides full aiming integrity utilizing both a rugged knuckle and yoke design
- 1,270lm
- IK10 option available
- Minimalist design that provides clean and intentional lines and transitions
- Slightly convex watershed lens that evades water build up and staining
- Industry leading flow through design achieve with separately sealed optical chamber and driver
- NOM Listed

LUMEN PACKAGES

	10DEG	15DEG	20DEG	30DEG	40DEG	60DEG	70DEG
Deliver Lumens	1,274	1,216	1,208	1,192	1,172	1,164	1,128
Watts	41	41	41	41	41	41	41
LPW	31	30	29	29	29	28	28
Max Candela	32,068	10,821	7,414	3,005	1,746	1,265	770

	15Vx60H	30Vx60H	60Vx15H	60Vx30H
Deliver Lumens	1,243	1,200	1,163	1,147
Watts	41	41	41	41
LPW	30	29	28	28
Max Candela	3,111	1,715	3,225	1,631

Note: Information based on RGB

Individual Channel Lumens	R	G	B
Delivered Lumens	716	965	232

Note: Information based on RGB @ maximum output per channel and 40DEG

STANDARD DISTRIBUTION

AIMING DETAIL

SPECIFICATIONS

Weight:	15lbs
EPA:	KM: .73 YM: .71

DIMENSIONS

LED
5 YEAR warranty
IP68
Buy American

© 2021-2022 Acuity Brands Lighting, Inc. • One Lithonia Way, Conyers GA 30012
Phone: 800-705-SERV (7378) • www.hydrrel.com

SAF7_RGB | Rev. 02/28/22
Page 1 of 8

PERFORATED PANEL COLOR ON MOCK-UP DOES NOT REPRESENT THE FINAL BUILDING PANEL COLOR. COLOR TO BE RED COPPER ON THE EAST ELEVATION AND EAST CORNERS AS SHOWN IN THE RENDERED ELEVATIONS.

FIXTURE COLOR ON MOCK-UP DOES NOT REPRESENT THE FINAL COLOR. COLOR TO BE DARK BROWN OR BLACK TEXTURED.

KX10 FIXTURE INSTALL - ON WALL MOCK-UP

FIXTURE CUT SHEET - WALL MOUNTED FIXTURE AT PANELS

LRK DMC Downtown Mobility Center
Memphis, TN | 01.20014.00 | Updated 11.16.22
©2020 LRK Inc. All Rights Reserved.

LIGHT FIXTURE SPECIFICATIONS

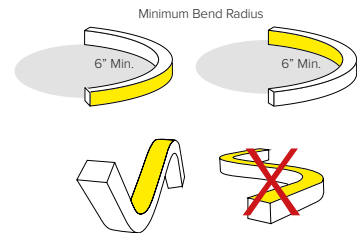
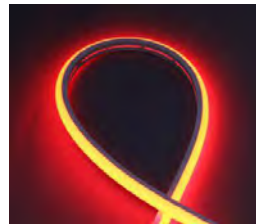
	Project 21-39283-9 DMC Mobility Center	Catalog Number DFNTB40ORGB24/KT09UTRGL1/KT09UTP1/DEDDX20022 44CDMX/DEDDX1001244CDMX	Type KX2
	Submitted By CLEAR ADVANTAGE LIGHTING INC	Notes	



DURAFLEX NEON RGB™ TOP Flex IP65 OUTDOOR

KEY FEATURES

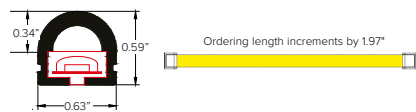
- Energy efficient LED flexible light strip for continuous constant color changing linear applications.
- Extremely flexible and adjustable lengths for varied architectural applications.
- Available as top-bend spherical profile for arcing applications.
- Max continuous length: up to 20' per run (4.0W/ft)
- Multiple dimming options available.



DETAILS

Spacing	0.33" OC LED Spacing
LEDs	36 LEDs per foot
Wattage	4.0W/ft
Color Temp	Red 630nm, Green 530nm, Blue 470nm
End Preps	Factory attached end preps available (See Page 2).
Field Cuts	See page 2 for manufacturer cut zones.
Mounting	Mounting clip or aluminum mounting channel options.
Lens Options	Extruded Silicone with Milky White diffusion lens with 179° visibility.
Installation	Factory manufactured lengths with 12" IP65 connection lead with 12" power feed. To be completed with clip or channel mountings. Ordering lengths increments by 1.97". Minimum bend diameter 6in.
Power Supply	Listed Class 2 output, 24V DC power supply required
Certifications	cULus Class 2 Listed Tested in accordance with LM-79-08 Energy efficient for California installations.
Compliance	ROHS compliant MRI Safe, driver to be mounted outside of MRI room. To be used with plastic or aluminum profiles only. To be installed with adhesive or MRI safe hardware only, no factory provided mounting hardware to be used.
Warranty	5 year warranty

DIMENSIONAL DRAWINGS



FIXTURE DATA

Model	Efficacy* Lm/Ft Lm/Wt	Lm/Ft	Wt/Ft	Model	Wt/LED	Lifespan at 90% drive
TOP Flex RGB	20.4	81.4	4.0	RGB 4.0W/ft	0.1W	50,000hrs

* Meets Title 24 High efficacy rating.
* LEDs operating at 90% of LED manufacturers maximum current rating.

LED DATA

PRODUCT CODE	PROFILE	WATTAGE	IP RATING	COLOR TEMP	VOLTAGE	+	END PREP	+	MOUNTING	+	POWER SUPPLY
DFN	DuraFlex Neon™	TB - TOP Flex	40 - 4.0W/ft	O - Outdoor IP65	RGB - Red Green Blue		24 - 24 VDC				

FRAME AND ATTACHMENT TO STRUCTURE PER DELEGATED DESIGN

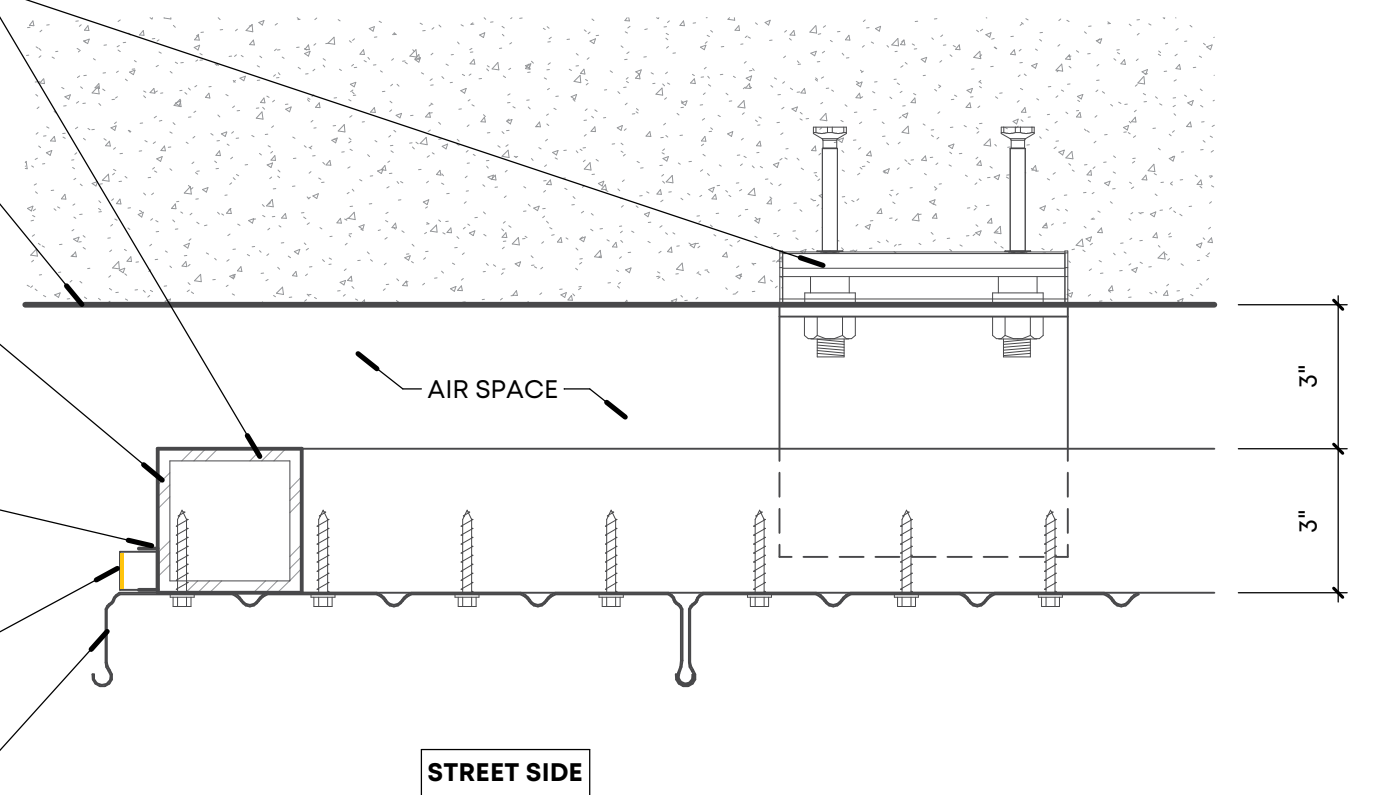
FACE OF CONCRETE

TUBE FRAME AT EDGE. PAINTED TO MATCH PANEL.

MOUNTING CHANNEL ATTACHED TO FRAME

ILLUMINATED FACE OF FIXTURE

FACADE PANEL



40

PLAN DETAIL - AFS-01 EDGE

SCALE: 3" = 1'-0"

FIXTURE CUT SHEET - EDGE LED TAPELIGHT AT NORTH ENTRY



DMC Downtown Mobility Center
 Memphis, TN | 01.20014.00 | Updated 11.16.22
 ©2020 LRK Inc. All Rights Reserved.

LIGHT FIXTURE SPECIFICATIONS



 <small>Top Products. Unmatched Service. Clear Advantage.</small>	Project 21-39283-9 DMC Mobility Center Submitted By CLEAR ADVANTAGE LIGHTING INC	Catalog Number WG 20LDL SM MM S 768" M 930 D010 BD W C4 WL Notes	Type KX3
--	---	--	--------------------

Project Name DMC MOBILITY C&SO # S29622
 Fixture Type KX3 PO# 9097TBC2206L

Ordering Information									
WG-20LDL-SM	MM	S	see next page	M	930	D010	BD	W	C4
Model	Fixation	Pattern	Length	Power	CRI/CCT	Driver	Lens	Finish	Cable
WG-20LDL-SM	GT9 GT15 MM SC A90 A180	S	A A x B A x B x C A x B x A x B	L M	927 930 935 940	X S D010 L3DAE L3DOE DFPN	OD (std) SD	W (std) B G F	C4 (std) C10 C20 C30

Luminaire

- Continuous, evenly illuminated snap-in lens without visible LED pattern.
- Standard Opal Diffuser for even illumination and no LED appearance. Satin Diffuser for high efficiency and minimal LED appearance.
- Field replaceable LED boards.
- 90+ CRI, 3 steps MacAdam.
- Lengths and angles factory cut to exact field dimensions.
- Standard and custom corners.
- Powder coat painted white - RAL 9010.
- 4" class 2 plenum rated feed cable standard (Options - "C4").

Fixation

- GT9 = 9/16" T-bar grid clip
- GT15 = 15/16" T-bar grid clip
- MM = Magnet mounting
- SC = Screw clip
- A90 = Adjustable 90° bracket
- A180 = Adjustable 180° bracket

Pattern

- S = Straight run
- P = Standard patterns 2, 3 or 4 sided with 90° corners on the same plane¹
- PZ = Non-standard patterns and/or corners other than 90° on multiple planes, consult factory¹

Length

- A, B, C = specify inches to the nearest 0.25" (i.e. 72"). For patterns specify each length (i.e. 2 sided: A x B = 72" x 48"; 3 sided: A x B x C; 4 sided: A x B x A x B).

Power

- L = 3.2W/ft low power (24V)
- M = 6.4W/ft mid power (24V)

1 See pattern spec sheet.
2 Wattage shown does not include power supplies/drivers.
3 Delivered lumens with satin opal diffuser shown.
4 Remote power supply required. See power supply page for details.

CRI/CCT

- 90+ CRI (low/mid power)
- 927 = 2700K (243/450 lm/ft)
- 930 = 3000K, (251/464lm/ft)
- 935 = 3500K, (256/474 lm/ft)
- 940 = 4000K, (259/478 lm/ft)

Driver (remote)

- X = No driver, ordered separately
- S = Standard driver 120-277V
- D010 = Osram, 10%, 0-10V dimming, 120-277V
- L3DAE = Lutron Hi-lume 1% EcoSystem, 120-277V
- L3DOE = Lutron Hi-lume Premier 0.1% EcoSystem, 120-277V
- DFPN = Lutron Forward Phase 1%, 120VAC

Lens

- OD = Satin opal diffuser (standard)
- SD = Satin clear diffuser (high efficiency)

Modification: Block Diffuser (BD)

Finish

- W = White, 20% gloss, RAL9010 (standard)
- B = Black, 20% gloss
- G = Gray, 20% gloss

Modification: Wet Location

Cable

- C4 = 4' tray cable (plenum rated) (standard)
- C10 = 10' tray cable (plenum rated)
- C20 = 20' tray cable (plenum rated)
- C30 = 30' tray cable (plenum rated)

Emergency

- Emergency LED driver available, order separately.

Customer Approval Company _____

Approved Signature _____

Approved with corrections noted Print Name _____

Revise and Resubmit Date _____

Original Date Submitted _____

whitegoods 410 381 1497 inter-lux.com answers@inter-lux.com Patent: 10190738 (930-20158-REV.C) 1

Inter-lux reserves the right to make technical changes without notice.

FIXTURE TO BE MOUNTED SEMI-RECESSED IN THE METAL SOFFITS.

FIXTURE WITH ACRYLIC LENS - SATIN OPAL DIFFUSER

 <small>Top Products. Unmatched Service. Clear Advantage.</small>	Project 21-39283-9 DMC Mobility Center Submitted By CLEAR ADVANTAGE LIGHTING INC	Catalog Number WG 20LDL SM MM S 768" M 930 D010 BD W C4 WL Notes	Type KX3
--	---	--	--------------------

Project Name DMC MOBILITY C&SO # _____
 Fixture Type _____ PO# _____

20 Linear Surface

Submittal - Straight Run

System	Qty.	'A'	Approximate Driver QTY
1	1	768.00"	6 per run
2	2	312.00"	3 per run
3	1	1,020.00"	8 per run
4	1	192.00"	2 per run
5	1	2,172.00"	16 per run
6	1	828.00"	6 per run
7	_____	_____	_____
8	_____	_____	_____
9	_____	_____	_____
10	_____	_____	_____
11	_____	_____	_____
12	_____	_____	_____
13	_____	_____	_____
14	_____	_____	_____
15	_____	_____	_____

Customer Approval Company _____

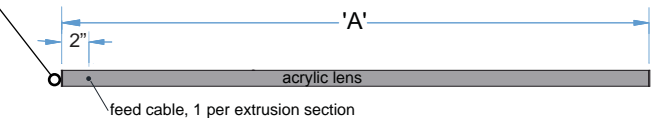
Approved Signature _____

Approved with corrections noted Print Name _____

Revise and Resubmit Date _____

whitegoods 410 381 1497 inter-lux.com answers@inter-lux.com Patent: 10190738 (930-20158-REV.C) 3

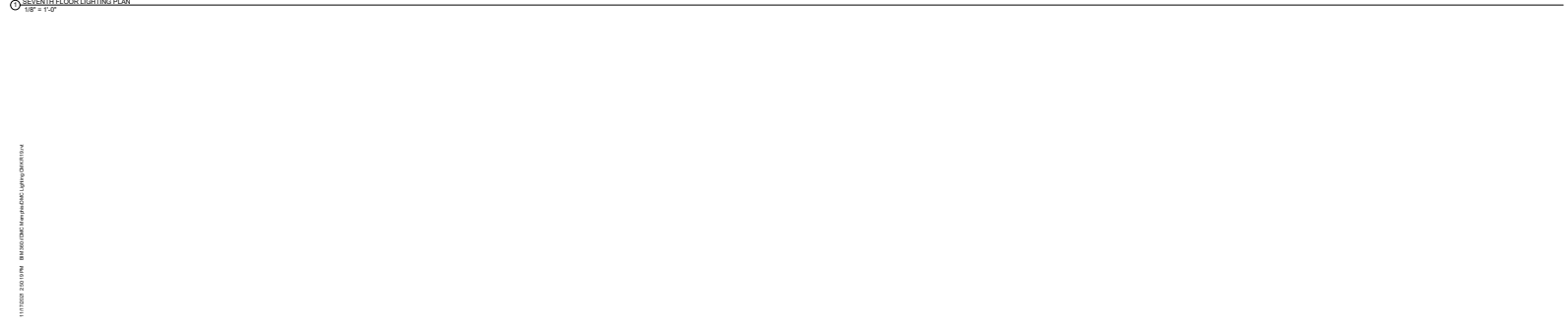
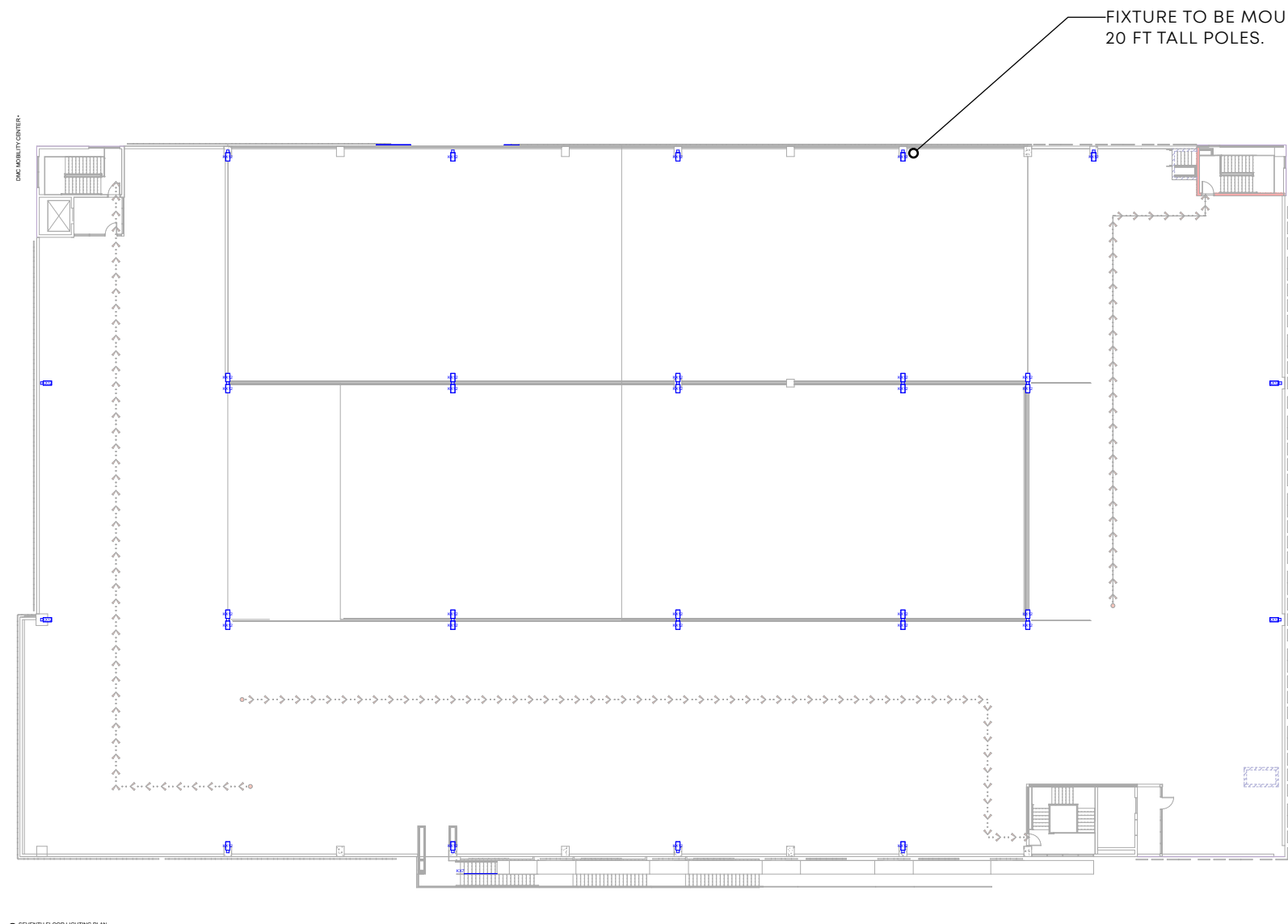
Inter-lux reserves the right to make technical changes without notice.



Note: Power feed is required for each extrusion section. Refer to page 2 for wiring diagrams and additional information to layout a typical linear system.

Note: Generic fixture layout shown here only to confirm pattern, length, and provide general feed location information. Full BOM to be provided on future Record Drawings.

FIXTURE CUT SHEETS - LINEAR LIGHT AT EXTERIOR CANOPIES INCLUDING MONUMENTAL STAIR CANOPY AND UNDERSIDE OF MONUMENTAL STAIR



50 South E.B. King Blvd.
Suite 500
Memphis, TN 38103
901.521.1440

Client:



Notes and Revisions

△	Date	Issued / Revised

Notes and Revisions

Notes and Revisions

Notes and Revisions

Notes and Revisions

Notes and Revisions

Notes and Revisions

Notes and Revisions

Notes and Revisions

Notes and Revisions

Notes and Revisions

Notes and Revisions

Notes and Revisions

Notes and Revisions

Notes and Revisions

Notes and Revisions

Notes and Revisions

Notes and Revisions

Notes and Revisions

Notes and Revisions

Notes and Revisions

Notes and Revisions

Notes and Revisions

Notes and Revisions

Notes and Revisions

Notes and Revisions

Notes and Revisions

Notes and Revisions

Notes and Revisions

Notes and Revisions

Notes and Revisions

Notes and Revisions

Notes and Revisions

Notes and Revisions

Notes and Revisions

Notes and Revisions

Notes and Revisions

Notes and Revisions

Notes and Revisions

Notes and Revisions

Notes and Revisions

Notes and Revisions

Notes and Revisions

Notes and Revisions

Notes and Revisions

Notes and Revisions

Notes and Revisions

Notes and Revisions

Notes and Revisions

Notes and Revisions

Notes and Revisions

Notes and Revisions

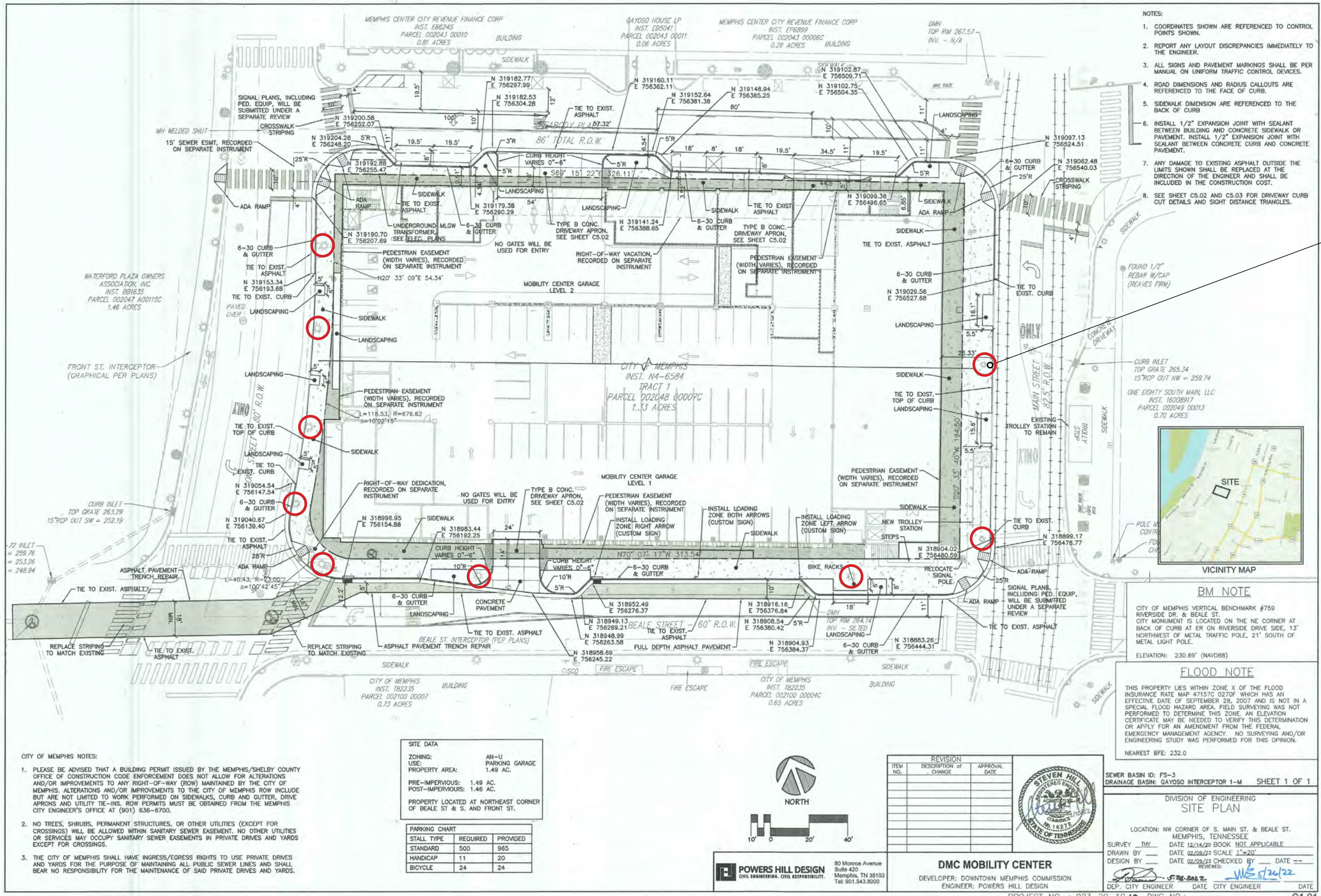
LD-107

LIGHTING PLAN LEVEL 7 - POLE MOUNTED LIGHTS ON TOP LEVEL OF PARKING

<p>Project 21-39283-9 DMC Mobility Center</p> <p>Submitted By CLEAR ADVANTAGE LIGHTING INC</p>	<p>Catalog Number RSX1 LED P3 30K R4 MVOLT HS SPA DBLXD</p> <p>Notes</p>	<p>Type KX12-2H</p>																																																																		
<p>RSX1 LED Area Luminaire</p>	<p>Catalog Number</p> <p>Notes</p> <p>Type</p> <p>Hit the Tab key or mouse over the page to see all interactive elements.</p>																																																																			
	<p>Introduction</p> <p>The new RSX LED Area family delivers maximum value by providing significant energy savings, long life and outstanding photometric performance at an affordable price. The RSX1 delivers 7,000 to 17,000 lumens allowing it to replace 70W to 400W HID luminaires.</p> <p>The RSX features an integral universal mounting mechanism that allows the luminaire to be mounted on most existing drill hole patterns. This "no-drill" solution provides significant labor savings. An easy-access door on the bottom of mounting arm allows for wiring without opening the electrical compartment. A mast arm adaptor, adjustable integral slipfitter and other mounting configurations are available.</p>																																																																			
<p>Specifications</p> <table border="0"> <tr> <td>EPA (ft²@90°):</td> <td>0.57 ft² (0.05 m²)</td> </tr> <tr> <td>Length:</td> <td>21.8" (55.4 cm) (SPA mount)</td> </tr> <tr> <td>Width:</td> <td>13.3" (33.8 cm)</td> </tr> <tr> <td>Height:</td> <td>3.0" (7.6 cm) Main Body 7.2" (18.4 cm) Arm</td> </tr> <tr> <td>Weight: (SPA mount):</td> <td>22.0 lbs (10.0 kg)</td> </tr> </table>			EPA (ft²@90°):	0.57 ft² (0.05 m²)	Length:	21.8" (55.4 cm) (SPA mount)	Width:	13.3" (33.8 cm)	Height:	3.0" (7.6 cm) Main Body 7.2" (18.4 cm) Arm	Weight: (SPA mount):	22.0 lbs (10.0 kg)																																																								
EPA (ft²@90°):	0.57 ft² (0.05 m²)																																																																			
Length:	21.8" (55.4 cm) (SPA mount)																																																																			
Width:	13.3" (33.8 cm)																																																																			
Height:	3.0" (7.6 cm) Main Body 7.2" (18.4 cm) Arm																																																																			
Weight: (SPA mount):	22.0 lbs (10.0 kg)																																																																			
<p>Ordering Information</p> <p>EXAMPLE: RSX1 LED P4 40K R3 MVOLT SPA DDBXD</p> <table border="1"> <thead> <tr> <th>Series</th> <th>Performance Package</th> <th>Color Temperature</th> <th>Distribution</th> <th>Voltage</th> <th>Mounting</th> </tr> </thead> <tbody> <tr> <td>RSX1 LED</td> <td>P1</td> <td>30K 3000K</td> <td>R2 Type 2 Wide</td> <td>MVOLT (120V-277V) 3</td> <td>SPA Square pole mounting (3.0" min. dia. pole-for 1 at 90°, 3.5" min. dia. pole-for 2, 3, 4 at 90°)</td> </tr> <tr> <td></td> <td>P2</td> <td>40K 4000K</td> <td>R3 Type 3 Wide</td> <td>HVOLT (347V-480V) 3</td> <td>RPA Round pole mounting (3.2" min. dia. RND pole-for 1 at 90°, 3 at 180°, 3 at 120°)</td> </tr> <tr> <td></td> <td>P3</td> <td>50K 5000K</td> <td>R3S Type 3 Short</td> <td>XVOLT (277V-480V) 4</td> <td>MA Mast arm adaptor (fits 2-3/8" OD horizontal tenon)</td> </tr> <tr> <td></td> <td>P4</td> <td></td> <td>R4 Type 4 Wide</td> <td>(use specific voltage for options as noted)</td> <td>IS Adjustable slipfitter (fits 2-3/8" OD tenon) 4</td> </tr> <tr> <td></td> <td></td> <td></td> <td>R4S Type 4 Short</td> <td>120 3 277 3</td> <td>WBA Wall bracket 3</td> </tr> <tr> <td></td> <td></td> <td></td> <td>R5 Type 5 Wide</td> <td>208 3 347 3</td> <td>WBASC Wall bracket with surface conduit box</td> </tr> <tr> <td></td> <td></td> <td></td> <td>R5S Type 5 Short</td> <td>240 3 480 3</td> <td>AASP Adjustable tft arm square pole mounting 4</td> </tr> <tr> <td></td> <td></td> <td></td> <td>AFR Automotive Front Row Right Rotated</td> <td></td> <td>AARP Adjustable tft arm round pole mounting 4</td> </tr> <tr> <td></td> <td></td> <td></td> <td>AFR90 Automotive Front Row Right Rotated</td> <td></td> <td>AAWB Adjustable tft arm with wall bracket 4</td> </tr> <tr> <td></td> <td></td> <td></td> <td>AFRL90 Automotive Front Row Left Rotated</td> <td></td> <td>AAWSC Adjustable tft arm wall bracket and surface conduit box 4</td> </tr> </tbody> </table>			Series	Performance Package	Color Temperature	Distribution	Voltage	Mounting	RSX1 LED	P1	30K 3000K	R2 Type 2 Wide	MVOLT (120V-277V) 3	SPA Square pole mounting (3.0" min. dia. pole-for 1 at 90°, 3.5" min. dia. pole-for 2, 3, 4 at 90°)		P2	40K 4000K	R3 Type 3 Wide	HVOLT (347V-480V) 3	RPA Round pole mounting (3.2" min. dia. RND pole-for 1 at 90°, 3 at 180°, 3 at 120°)		P3	50K 5000K	R3S Type 3 Short	XVOLT (277V-480V) 4	MA Mast arm adaptor (fits 2-3/8" OD horizontal tenon)		P4		R4 Type 4 Wide	(use specific voltage for options as noted)	IS Adjustable slipfitter (fits 2-3/8" OD tenon) 4				R4S Type 4 Short	120 3 277 3	WBA Wall bracket 3				R5 Type 5 Wide	208 3 347 3	WBASC Wall bracket with surface conduit box				R5S Type 5 Short	240 3 480 3	AASP Adjustable tft arm square pole mounting 4				AFR Automotive Front Row Right Rotated		AARP Adjustable tft arm round pole mounting 4				AFR90 Automotive Front Row Right Rotated		AAWB Adjustable tft arm with wall bracket 4				AFRL90 Automotive Front Row Left Rotated		AAWSC Adjustable tft arm wall bracket and surface conduit box 4
Series	Performance Package	Color Temperature	Distribution	Voltage	Mounting																																																															
RSX1 LED	P1	30K 3000K	R2 Type 2 Wide	MVOLT (120V-277V) 3	SPA Square pole mounting (3.0" min. dia. pole-for 1 at 90°, 3.5" min. dia. pole-for 2, 3, 4 at 90°)																																																															
	P2	40K 4000K	R3 Type 3 Wide	HVOLT (347V-480V) 3	RPA Round pole mounting (3.2" min. dia. RND pole-for 1 at 90°, 3 at 180°, 3 at 120°)																																																															
	P3	50K 5000K	R3S Type 3 Short	XVOLT (277V-480V) 4	MA Mast arm adaptor (fits 2-3/8" OD horizontal tenon)																																																															
	P4		R4 Type 4 Wide	(use specific voltage for options as noted)	IS Adjustable slipfitter (fits 2-3/8" OD tenon) 4																																																															
			R4S Type 4 Short	120 3 277 3	WBA Wall bracket 3																																																															
			R5 Type 5 Wide	208 3 347 3	WBASC Wall bracket with surface conduit box																																																															
			R5S Type 5 Short	240 3 480 3	AASP Adjustable tft arm square pole mounting 4																																																															
			AFR Automotive Front Row Right Rotated		AARP Adjustable tft arm round pole mounting 4																																																															
			AFR90 Automotive Front Row Right Rotated		AAWB Adjustable tft arm with wall bracket 4																																																															
			AFRL90 Automotive Front Row Left Rotated		AAWSC Adjustable tft arm wall bracket and surface conduit box 4																																																															
<p>Options</p> <table border="0"> <tr> <td>Shipped Installed</td> <td>Shipped Installed</td> </tr> <tr> <td>HS House-side shield 4</td> <td>*Standalone and Networked Sensors/Controls (factory default settings, see table page 9)</td> </tr> <tr> <td>PE Photocontrol, button style 6,9</td> <td>nLight AIR generation 2 13,16</td> </tr> <tr> <td>PEX Photocontrol external threaded, adjustable 9,9</td> <td>PIRHN Networked, Bi-Level motion/ambient sensor (for use with nLight AIR2) 13,16</td> </tr> <tr> <td>PER7 Seven-wire twist-lock receptacle only (no controls) 9,12,13</td> <td>BAA Buy America(s) Act Compliant</td> </tr> <tr> <td>CE34 Conduit entry 3/4"NPT (Qty 2)</td> <td>*Note: PIRHN with nLight Air can be used as a standalone or networked solution. Sensor coverage pattern is affected when luminaire is tilted.</td> </tr> <tr> <td>SF Single fuse (120, 277, 347) 3</td> <td>Shipped Separately (requires some field assembly)</td> </tr> <tr> <td>DF Double fuse (208, 240, 480) 3</td> <td>EGS External glare shield 7</td> </tr> <tr> <td>SPD20KV 20KV Surge pack (10KV standard)</td> <td>EGFV External glare full visor (360° around light aperture) 7</td> </tr> <tr> <td>FAO Field adjustable output 13</td> <td>BS Bird spikes 17</td> </tr> <tr> <td>DMG 0-10V dimming extend out back of housing for external control (control ordered separate) 13</td> <td></td> </tr> </table>		Shipped Installed	Shipped Installed	HS House-side shield 4	*Standalone and Networked Sensors/Controls (factory default settings, see table page 9)	PE Photocontrol, button style 6,9	nLight AIR generation 2 13,16	PEX Photocontrol external threaded, adjustable 9,9	PIRHN Networked, Bi-Level motion/ambient sensor (for use with nLight AIR2) 13,16	PER7 Seven-wire twist-lock receptacle only (no controls) 9,12,13	BAA Buy America(s) Act Compliant	CE34 Conduit entry 3/4"NPT (Qty 2)	*Note: PIRHN with nLight Air can be used as a standalone or networked solution. Sensor coverage pattern is affected when luminaire is tilted.	SF Single fuse (120, 277, 347) 3	Shipped Separately (requires some field assembly)	DF Double fuse (208, 240, 480) 3	EGS External glare shield 7	SPD20KV 20KV Surge pack (10KV standard)	EGFV External glare full visor (360° around light aperture) 7	FAO Field adjustable output 13	BS Bird spikes 17	DMG 0-10V dimming extend out back of housing for external control (control ordered separate) 13		<p>Finish</p> <table border="0"> <tr> <td>DDBXD Dark Bronze</td> </tr> <tr> <td>DBLXD Black</td> </tr> <tr> <td>DNAXD Natural Aluminum</td> </tr> <tr> <td>DWHXD White</td> </tr> <tr> <td>DDBTXD Textured Dark Bronze</td> </tr> <tr> <td>DBLTXD Textured Black</td> </tr> <tr> <td>DNATXD Textured Natural Aluminum</td> </tr> <tr> <td>DWHGXD Textured White</td> </tr> </table>	DDBXD Dark Bronze	DBLXD Black	DNAXD Natural Aluminum	DWHXD White	DDBTXD Textured Dark Bronze	DBLTXD Textured Black	DNATXD Textured Natural Aluminum	DWHGXD Textured White																																				
Shipped Installed	Shipped Installed																																																																			
HS House-side shield 4	*Standalone and Networked Sensors/Controls (factory default settings, see table page 9)																																																																			
PE Photocontrol, button style 6,9	nLight AIR generation 2 13,16																																																																			
PEX Photocontrol external threaded, adjustable 9,9	PIRHN Networked, Bi-Level motion/ambient sensor (for use with nLight AIR2) 13,16																																																																			
PER7 Seven-wire twist-lock receptacle only (no controls) 9,12,13	BAA Buy America(s) Act Compliant																																																																			
CE34 Conduit entry 3/4"NPT (Qty 2)	*Note: PIRHN with nLight Air can be used as a standalone or networked solution. Sensor coverage pattern is affected when luminaire is tilted.																																																																			
SF Single fuse (120, 277, 347) 3	Shipped Separately (requires some field assembly)																																																																			
DF Double fuse (208, 240, 480) 3	EGS External glare shield 7																																																																			
SPD20KV 20KV Surge pack (10KV standard)	EGFV External glare full visor (360° around light aperture) 7																																																																			
FAO Field adjustable output 13	BS Bird spikes 17																																																																			
DMG 0-10V dimming extend out back of housing for external control (control ordered separate) 13																																																																				
DDBXD Dark Bronze																																																																				
DBLXD Black																																																																				
DNAXD Natural Aluminum																																																																				
DWHXD White																																																																				
DDBTXD Textured Dark Bronze																																																																				
DBLTXD Textured Black																																																																				
DNATXD Textured Natural Aluminum																																																																				
DWHGXD Textured White																																																																				
<p>LITHONIA LIGHTING COMMERCIAL OUTDOOR</p> <p>One Lithonia Way • Conyers, Georgia 30012 • Phone: 1-800-705-SERV (7378) • www.acuitybrands.com</p> <p>© 2018-2022 Acuity Brands Lighting, Inc. All rights reserved.</p> <p>Lithonia RSX1 Area LED Rev. 03/01/22 Page 1 of 9</p>																																																																				

FIXTURE CUT SHEET - POLE MOUNTED LIGHTS - SINGLE HEAD AND DOUBLE HEAD AS SHOWN ON PLAN





- NOTES:
1. COORDINATES SHOWN ARE REFERENCED TO CONTROL POINTS SHOWN.
 2. REPORT ANY LAYOUT DISCREPANCIES IMMEDIATELY TO THE ENGINEER.
 3. ALL SIGNS AND PAVEMENT MARKINGS SHALL BE PER MANUAL ON UNIFORM TRAFFIC CONTROL DEVICES.
 4. ROAD DIMENSIONS AND RADIUS CALLOUTS ARE REFERENCED TO THE FACE OF CURB.
 5. SIDEWALK DIMENSION ARE REFERENCED TO THE BACK OF CURB
 6. INSTALL 1/2" EXPANSION JOINT WITH SEALANT BETWEEN BUILDING AND CONCRETE SIDEWALK OR PAVEMENT. INSTALL 1/2" EXPANSION JOINT WITH SEALANT BETWEEN CONCRETE CURB AND CONCRETE PAVEMENT.
 7. ANY DAMAGE TO EXISTING ASPHALT OUTSIDE THE LIMITS SHOWN SHALL BE REPLACED AT THE DIRECTION OF THE ENGINEER AND SHALL BE INCLUDED IN THE CONSTRUCTION COST.
 8. SEE SHEET C5.02 AND C5.03 FOR DRIVEWAY CURB CUT DETAILS AND SIGHT DISTANCE TRIANGLES.

NOTE: GENERAL SIDEWALK LIGHTING PROVIDED BY SEVERAL EXISTING POLE LIGHTS. REFERENCE CIVIL SITE PLAN SHOWN HERE FOR LOCATIONS.

POLE LIGHTS AT SIDEWALK, CIRCLED IN RED



BENCHMARK NOTE
 CITY OF MEMPHIS VERTICAL BENCHMARK #759 RIVERSIDE DR. & BEALE ST. CITY MONUMENT IS LOCATED ON THE NE CORNER AT BACK OF CURB AT ER ON RIVERSIDE DRIVE SIDE, 13' NORTHWEST OF METAL TRAFFIC POLE, 21' SOUTH OF METAL LIGHT POLE.
 ELEVATION: 230.89' (NAVD88)

FLOOD NOTE
 THIS PROPERTY LIES WITHIN ZONE X OF THE FLOOD INSURANCE RATE MAP 47157C 0207Q WHICH HAS AN EFFECTIVE DATE OF SEPTEMBER 28, 2007 AND IS NOT IN A SPECIAL FLOOD HAZARD AREA. FIELD SURVEYING WAS NOT PERFORMED TO DETERMINE THIS ZONE. AN ELEVATION CERTIFICATE MAY BE NEEDED TO VERIFY THIS DETERMINATION OR APPLY FOR AN AMENDMENT FROM THE FEDERAL EMERGENCY MANAGEMENT AGENCY. NO SURVEYING AND/OR ENGINEERING STUDY WAS PERFORMED FOR THIS OPINION.
 NEAREST BFE: 232.0

SEWER BASIN ID: FS-3
 DRAINAGE BASIN: GAYOSO INTERCEPTOR 1-M SHEET 1 OF 1

DIVISION OF ENGINEERING
SITE PLAN

LOCATION: NW CORNER OF S. MAIN ST. & BEALE ST. MEMPHIS, TENNESSEE
 SURVEY THY DATE 12/14/20 BOOK NOT APPLICABLE
 DRAWN BY DATE 02/28/22 SCALE 1"=20'
 DESIGN BY DATE 02/28/22 CHECKED BY DATE --
 DEP. CITY ENGINEER DATE CITY ENGINEER DATE

- CITY OF MEMPHIS NOTES:
1. PLEASE BE ADVISED THAT A BUILDING PERMIT ISSUED BY THE MEMPHIS/SHELBY COUNTY OFFICE OF CONSTRUCTION CODE ENFORCEMENT DOES NOT ALLOW FOR ALTERATIONS AND/OR IMPROVEMENTS TO ANY RIGHT-OF-WAY (ROW) MAINTAINED BY THE CITY OF MEMPHIS. ALTERATIONS AND/OR IMPROVEMENTS TO THE CITY OF MEMPHIS ROW INCLUDE BUT ARE NOT LIMITED TO WORK PERFORMED ON SIDEWALKS, CURB AND GUTTER, DRIVE APRONS AND UTILITY TIE-INS. ROW PERMITS MUST BE OBTAINED FROM THE MEMPHIS CITY ENGINEER'S OFFICE AT (901) 636-6700.
 2. NO TREES, SHRUBS, PERMANENT STRUCTURES, OR OTHER UTILITIES (EXCEPT FOR CROSSINGS) WILL BE ALLOWED WITHIN SANITARY SEWER EASEMENT. NO OTHER UTILITIES OR SERVICES MAY OCCUPY SANITARY SEWER EASEMENTS IN PRIVATE DRIVES AND YARDS EXCEPT FOR CROSSINGS.
 3. THE CITY OF MEMPHIS SHALL HAVE INGRESS/EGRESS RIGHTS TO USE PRIVATE DRIVES AND YARDS FOR THE PURPOSE OF MAINTAINING ALL PUBLIC SEWER LINES AND SHALL BEAR NO RESPONSIBILITY FOR THE MAINTENANCE OF SAID PRIVATE DRIVES AND YARDS.

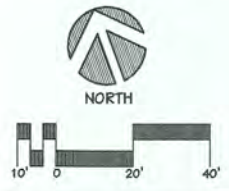
SITE DATA

ZONING:	AN-U
USE:	PARKING GARAGE
PROPERTY AREA:	1.49 AC.
PRE-IMPERVIOUS:	1.49 AC.
POST-IMPERVIOUS:	1.46 AC.

PROPERTY LOCATED AT NORTHEAST CORNER OF BEALE ST & S. AND FRONT ST.

PARKING CHART

STALL TYPE	REQUIRED	PROVIDED
STANDARD	500	965
HANDICAP	11	20
BICYCLE	24	24



POWERS HILL DESIGN
 CIVIL ENGINEERING. CIVIL RESPONSIBILITY.
 80 Monroe Avenue
 Suite 420
 Memphis, TN 38103
 Tel: 901.543.8000

ITEM NO.	REVISION		APPROVAL DATE
	DESCRIPTION OF CHANGE	DATE	



DMC MOBILITY CENTER
 DEVELOPER: DOWNTOWN MEMPHIS COMMISSION
 ENGINEER: POWERS HILL DESIGN

PROJECT NO. : 023-20-10 SP DWG NO.: C1.01

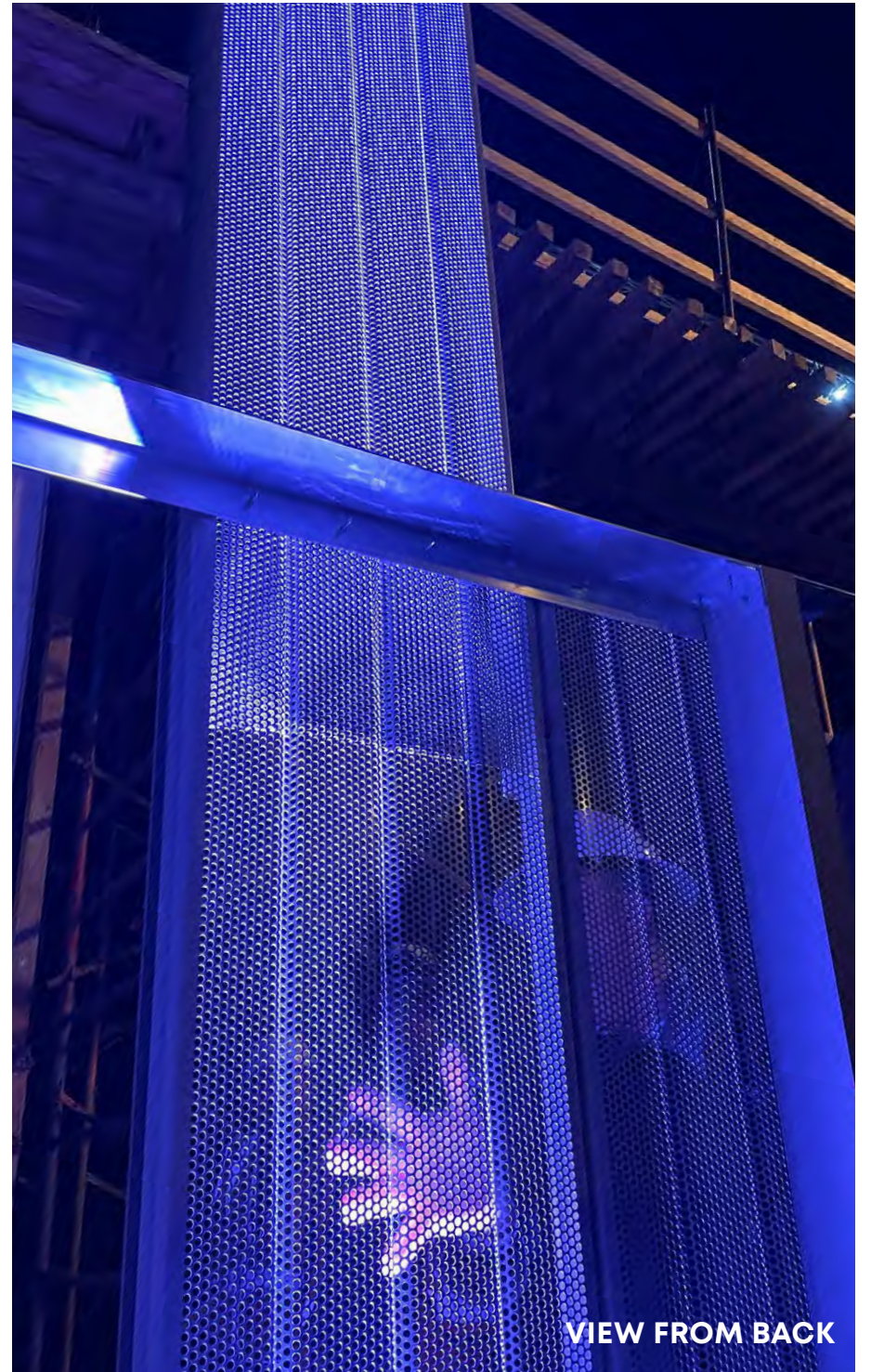


BACKLIT LIGHTING EXAMPLE PHOTO - PERFORATED PANELS ILLUMINATED FROM GENERAL PARKING LIGHTING



FACE AND BACKLIT LIGHTING EXAMPLE PHOTO - PERFORATED PANELS ILLUMINATED FROM EXTERIOR AND INTERIOR LIGHTING





KX10 FIXTURE MOCKUP LIGHTING - LIGHTING TEST AND FIXTURE ON WALL MOCK-UP
NOTE: LIGHTING IS PROGRAMMABLE, COLOR-CHANGING LED







VINYL GRAPHIC FILM

- V1 Vinyl Film with Digital Print - Compatible for concrete surfaces.
- V2 Vinyl Film with Digital Print - Compatible for metal surfaces.
- V3 Clear Adhesive Vinyl Film with Frosted Graphic - Compatible for glass applications.

SIGN TYPES

- A1 Acrylic Lettering - 1/2" thick U.N.O. - Non-illuminated
- B1 Blade signage - LED, Aluminum Reverse channel letters (Halo-lit)
- B2 Blade signage - Non-illuminated
- B3 Blade signage - LED, Aluminum Cabinet (Face-Lit)
- B4 Blade signage - LED Neon on Aluminum Frame
- C1 Canopy signage - LED, Aluminum Channel Letters (Face-Lit)
- N1 LED Neon signage - Exposed LED Neon
- N2 LED Neon signage - Aluminum Channel letters with Exposed LED Neon

SUBMITTALS REQUIRED

Paint & Finishes - Samples of each project paint color and finish, min. size of 5"x5"

Vinyl Sheeting - Samples of each project vinyl color, min. size of 5"x5"

Digital Prints - (2 scales)

1. 12"x24" full-color sections of each digital print at final size and resolution, printed on the final specified material.
2. Full color samples of each digital print at reduced size and resolution scaled to fit - 12"x24" format, printed on the final specified material.

NOTE: Unless specifically noted otherwise, all required submittals shall consist of 3 samples sent to both the Owner and LRK.



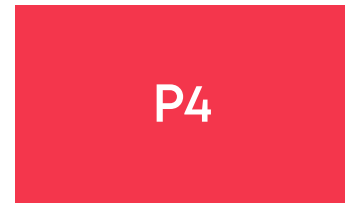
Level 1
Color Designation
Pantone 7545 C



Level 2
Color Designation
Pantone P 7-8 C



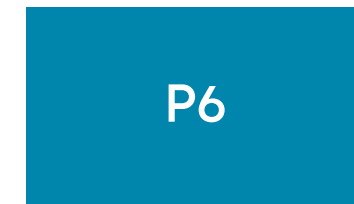
Level 3
Color Designation
Pantone 165 U



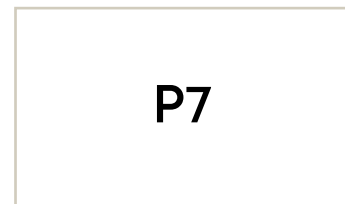
Level 4
Color Designation
Pantone 1787 C



Level 5
Color Designation
Pantone 390 C



Level 6
Color Designation
Pantone 7704 C



Level 7
No Vinyl Color Background
Dark Bronze Characters
Match Architect's Sample

NOTE: LEVEL DESIGNATION COLORS NOT APPLICABLE TO EXTERIOR SIGNAGE.

LRK

50 South B.B. King Blvd.
Suite 600
Memphis, Tennessee 38103
901.521.1440

Client:



114 N. Main St.
Memphis, Tennessee 38103

DATE

June 7, 2022

100% DESIGN INTENT
DOCUMENTS
For Preliminary Pricing

© 2020 LRK Inc.

PROJECT NAME

DMC MOBILITY CENTER
EXTERIOR GRAPHICS
AND SIGNAGE

60 Beale St.
Memphis, Tennessee 38103

LRK PROJECT NUMBER

01.20014.00

SHEET TITLE

**FINISHES AND
SPECIFICATIONS**

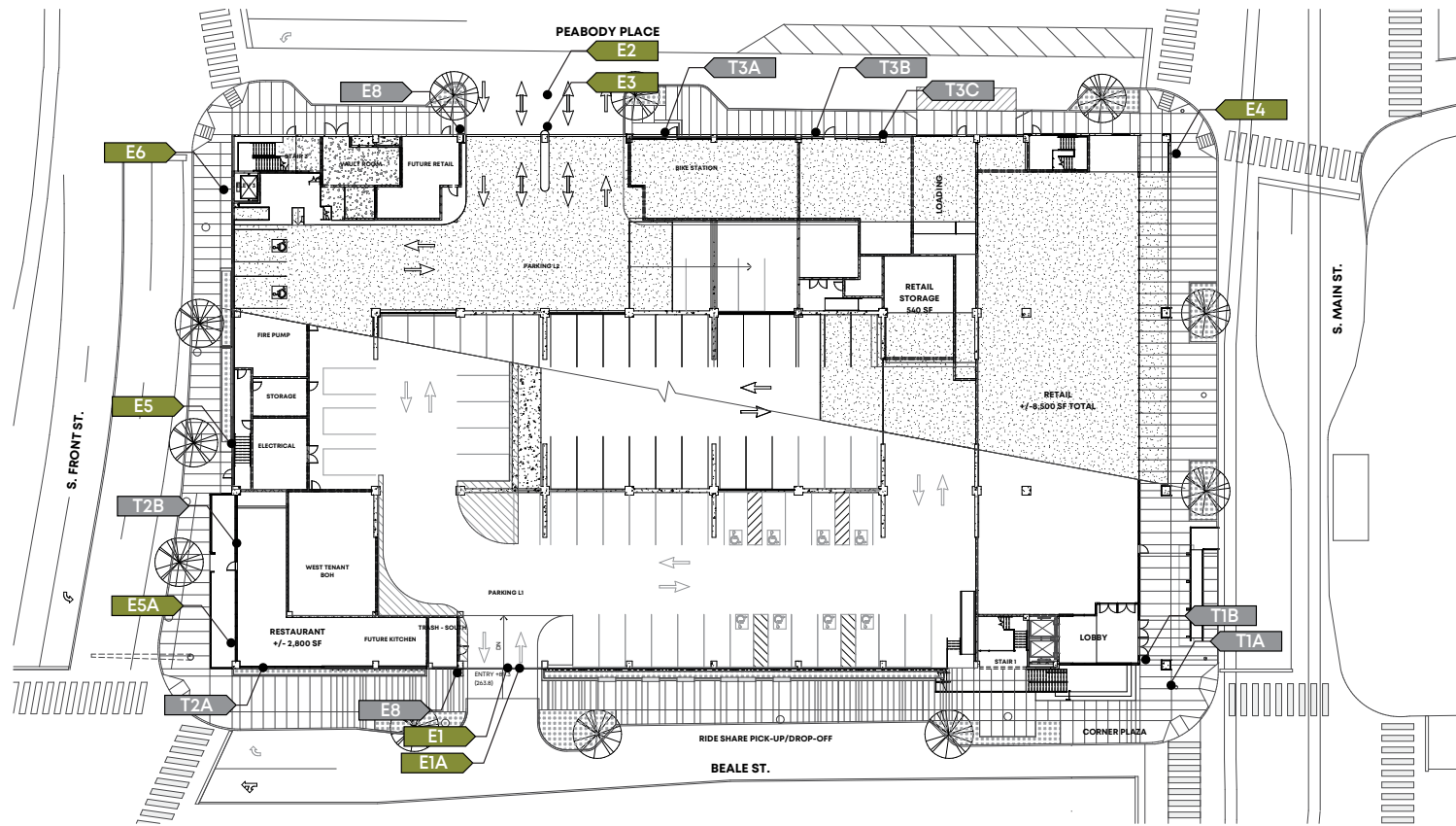
DRAWN BY: SKO

FILE NAME

P:\ME-A\2020\012001400-DMC-
Downtown Mobility Center\EGD

SHEET NO.

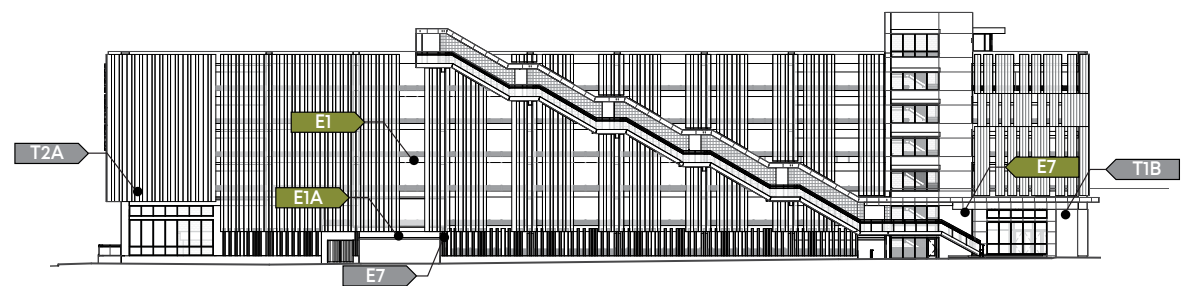
G-004



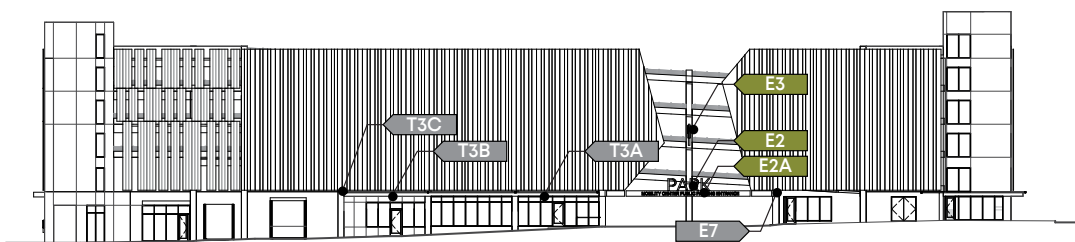
1 EXTERIOR SIGNAGE LOCATION PLAN: LEVEL 1 AND LEVEL 2
Scale: 1/64"=1'-0"

REFER TO SHEETS EG-9 TO EG-10 FOR ADDITIONAL EXTERIOR SIGN ELEVATIONS.

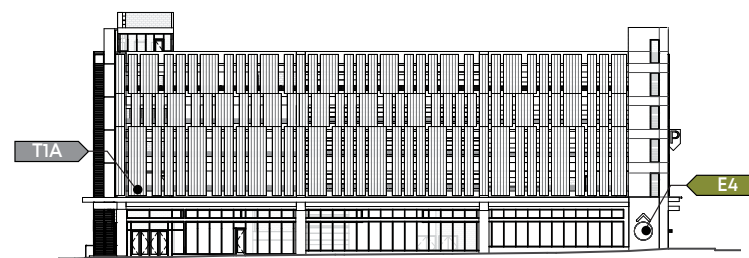
***NOTE**
Code related and wayfinding signage issued in the Permit Set - AG sheets and any future tenant signage not to be priced as part of this sign package.



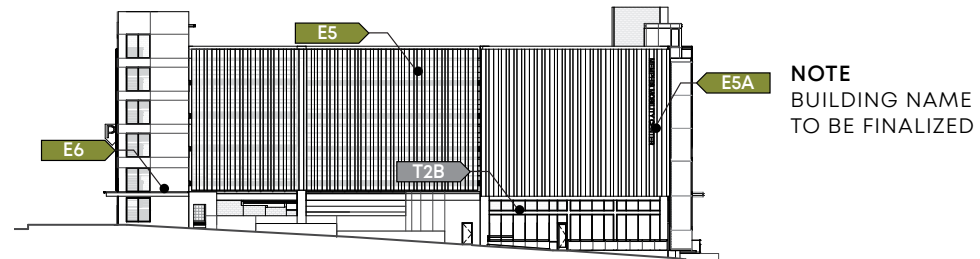
2 SOUTH ELEVATION
Scale: 1/64"=1'-0"



4 NORTH ELEVATION
Scale: 1/64"=1'-0"



3 EAST ELEVATION
Scale: 1/64"=1'-0"



5 WEST ELEVATION
Scale: 1/64"=1'-0"

NOTE: Signs in Grey For Reference Only
Not to be priced as part of this sign package.

SIGN SCHEDULE : EXTERIOR				
LOCATION #	SIGN TYPE	MESSAGE/CONTENT	NOTES	SIZE (W x H x D)
E1	LED NEON BLADE - B4	P	PARKING PRIMARY	SEE EG-10
E1A	CANOPY SIGN - C1	PUBLIC PARKING	PARKING ENTRY	1' x 10' x 2"
E2	CANOPY SIGN - C1	PARK	PARKING ENTRY	SEE EG-10
E2A	ACRYLIC - A1	MOBILITY CENTER PUBLIC PARKING ENTRANCE	PARKING ENTRY	SEE EG-10
E3	BLADE SIGN - B1	P	PARKING PRIMARY DOUBLE-SIDED	SEE EG-10
E4	ACRYLIC - A1	^P	PARKING DIRECTIONAL	SEE EG-9
E5 (E5A)	LED NEON - N2	<P MEMPHIS MOBILITY CENTER	PARKING PRIMARY	5' x 6'-8" x 4" 25' x 2'-6" x 1-1/2"
E6	CANOPY SIGN - C1	<P	PARKING DIRECTIONAL	5' x 3'-6" x 4"
E7	ACRYLIC - A1	60 BEALE ST	BUILDING ADDRESS	SEE EG-9
E8	WALL SIGN	EV {SYMBOL}	EV SIGNAGE	REFERENCE AG009 C16A
T1A	CANOPY SIGN - C1	{TBD}	EAST TENANT PRIMARY SIGN	
T1B	BLADE SIGN - B2	{TBD}	EAST TENANT SECONDARY SIGN	
T2A	LED NEON - N2	{TBD}	WEST TENANT PRIMARY SIGN	
T2B	ACRYLIC - A1	{TBD}	WEST TENANT SECONDARY SIGN	
T3A	LED NEON - N2	{TBD}	NORTH TENANT PRIMARY SIGN	
T3B	ACRYLIC - A1	{TBD}	NORTH TENANT SECONDARY SIGN	
T3C	BLADE SIGN - B3	{BIKE SYMBOL}	NORTH TENANT SECONDARY SIGN	



50 South B.B. King Blvd.
Suite 600
Memphis, Tennessee 38103
901.521.1440

Client:



114 N. Main St.
Memphis, Tennessee 38103

DATE

June 7, 2022

100% DESIGN INTENT DOCUMENTS
For Preliminary Pricing

© 2020 LRK Inc.

PROJECT NAME

DMC MOBILITY CENTER EXTERIOR GRAPHICS AND SIGNAGE

60 Beale St.
Memphis, Tennessee 38103

LRK PROJECT NUMBER

01.20014.00

SHEET TITLE

LOCATION PLAN LEVEL 1-2

DRAWN BY: SKO

FILE NAME

P:\ME-A\2020\012001400-DMC-Downtown Mobility Center\EGD

SHEET NO.

EG-1

GENERAL NOTES

These drawings are intended to convey design intent only. Final engineering, materials, and fabrication shall remain the responsibility of the Fabricator to ensure quality fit and finish for all components. Field verify all mounting dimensions.

Colors are shown for reference only, and are subject to the limitations of the printing process. Refer to finish samples and/or color system swatches for accurate reference.

Messages shown in the drawings are for reference only. Refer to Copy Schedule for actual messages required for each sign location.

LRK

50 South B.B. King Blvd.
Suite 600
Memphis, Tennessee 38103
901.521.1440

Client:



114 N. Main St.
Memphis, Tennessee 38103

DATE

June 7, 2022

100% DESIGN INTENT DOCUMENTS
For Preliminary Pricing

© 2020 LRK Inc.

PROJECT NAME

DMC MOBILITY CENTER
EXTERIOR GRAPHICS
AND SIGNAGE

60 Beale St.
Memphis, Tennessee 38103

LRK PROJECT NUMBER

01.20014.00

SHEET TITLE

**GRAPHIC ELEVATIONS:
EXTERIOR**

DRAWN BY: SKO

FILE NAME

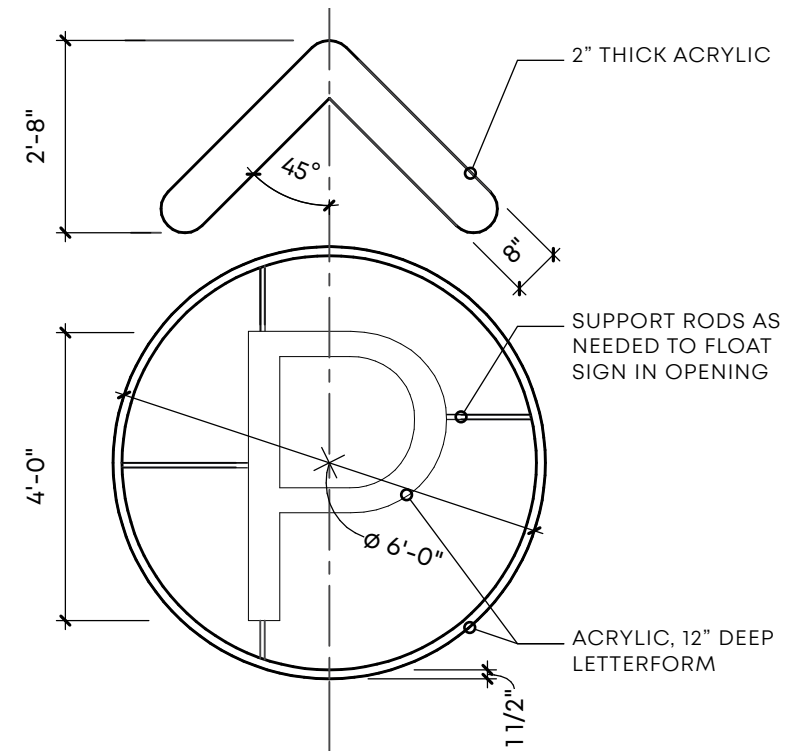
P:\ME-A\2020\012001400-DMC-
Downtown Mobility Center\EGD

SHEET NO.

EG-9



1 EAST ELEVATION - MAIN ST.
Scale: 1/16" = 1'-0"



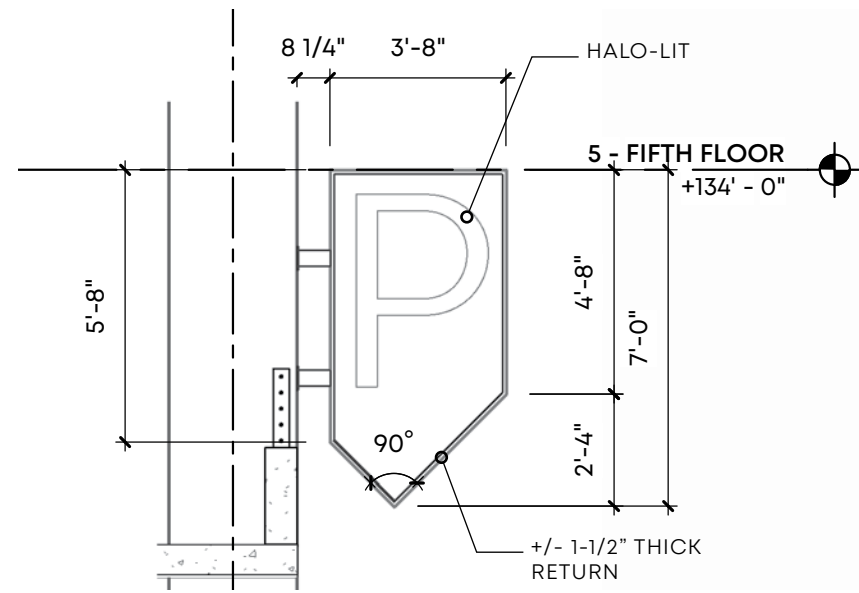
3 EAST ELEVATION - SIGN E4
Scale: 3/8" = 1'-0"



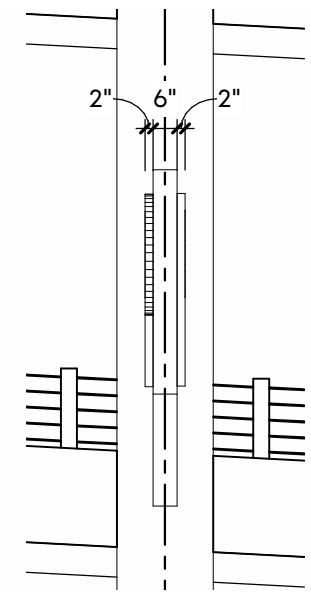
2 PARTIAL SOUTH ELEVATION - BEALE ST.
Scale: 1/16" = 1'-0"



4 EAST ELEVATION - BUILDING ADDRESS
Scale: 3/8" = 1'-0"



3 EAST ELEVATION - SIGN E3
Scale: 1/4" = 1'-0"



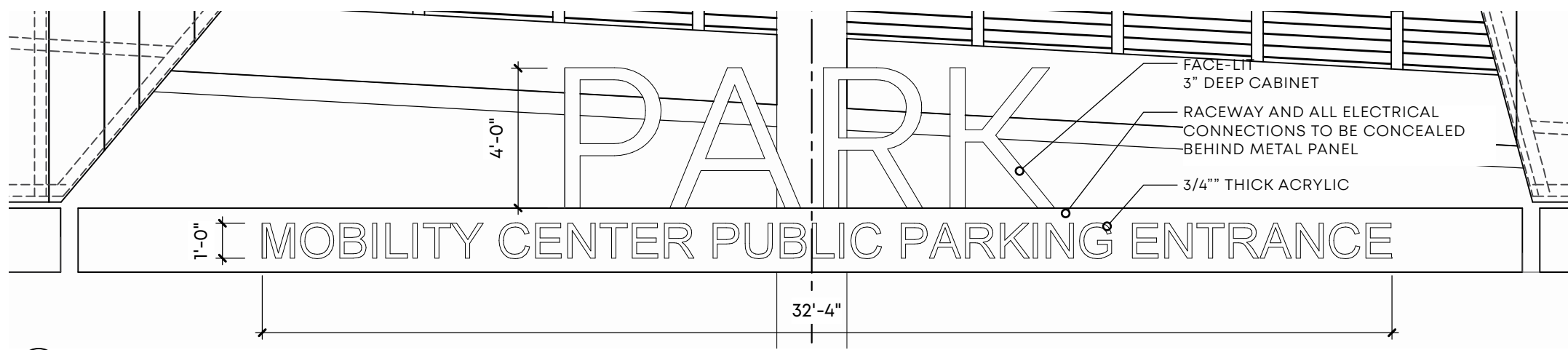
4 SIDE ELEVATION - SIGN E3
Scale: 1/4" = 1'-0"

GENERAL NOTES

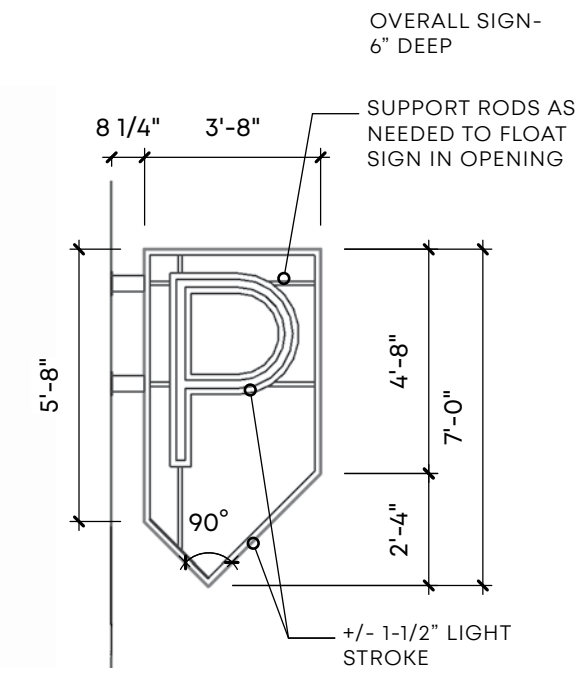
These drawings are intended to convey design intent only. Final engineering, materials, and fabrication shall remain the responsibility of the Fabricator to ensure quality fit and finish for all components. Field verify all mounting dimensions.

Colors are shown for reference only, and are subject to the limitations of the printing process. Refer to finish samples and/or color system swatches for accurate reference.

Messages shown in the drawings are for reference only. Refer to Copy Schedule for actual messages required for each sign location.



5 NORTH ELEVATION - SIGN E2, E2A
Scale: 1/4" = 1'-0"



6 WEST ELEVATION - SIGN E1
Scale: 1/4" = 1'-0"



1 PARTIAL NORTH ELEVATION
Scale: 1/16" = 1'-0"



2 PARTIAL WEST ELEVATION - SIGNS E5, E5A, AND E1 BEYOND
Scale: 1/16" = 1'-0"



50 South B.B. King Blvd.
Suite 600
Memphis, Tennessee 38103
901.521.1440

Client:



114 N. Main St.
Memphis, Tennessee 38103

DATE

June 7, 2022

100% DESIGN INTENT DOCUMENTS
For Preliminary Pricing

© 2020 LRK Inc.

PROJECT NAME

DMC MOBILITY CENTER
EXTERIOR GRAPHICS
AND SIGNAGE

60 Beale St.
Memphis, Tennessee 38103

LRK PROJECT NUMBER

01.20014.00

SHEET TITLE

**GRAPHIC ELEVATIONS :
EXTERIOR**

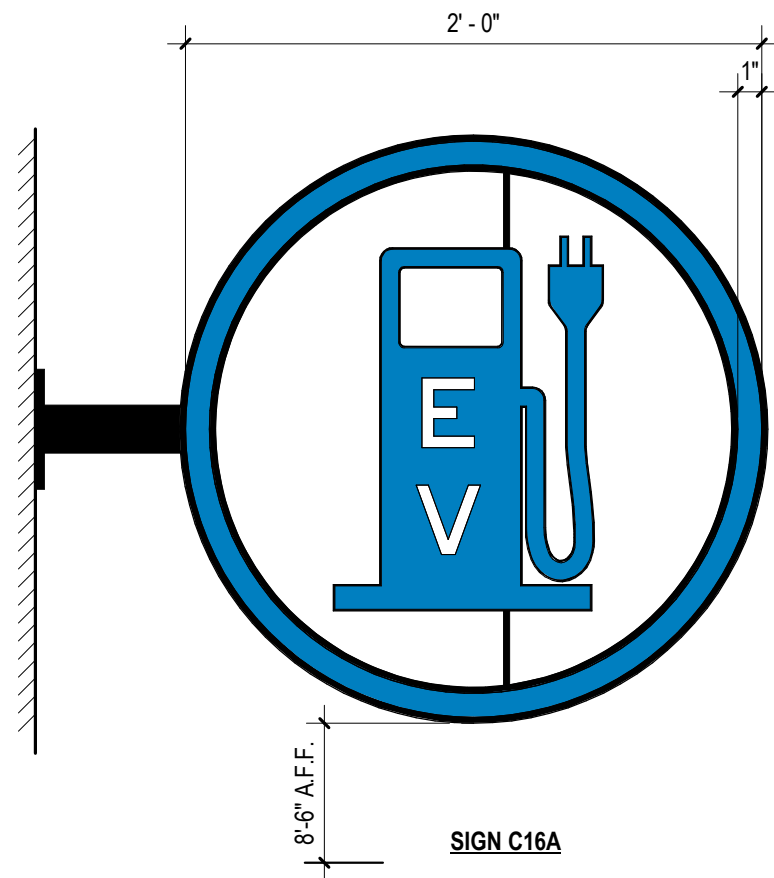
DRAWN BY: SKO

FILE NAME

P:\ME-A\2020\012001400-DMC-
Downtown Mobility Center\EGD

SHEET NO.

EG-10



SIGN NOTES:

1. EXTERIOR LED BLADE SIGN
2. COORDINATE WITH GC TO PROVIDE POWER TO SIGN
3. COLOR TO MATCH INTERIOR SIGN
PANTONE BLUE 294