

NEW HAPPENINGS

BELOW GRADE DEMOLITION OF 2001 RICHMOND HIGHWAY

In November 2021, JBG SMITH will begin below grade demolition work at 2001 Richmond Highway. This exciting project may create changes for our everyday pedestrian and vehicular routines.

Here's what to expect:

- At the beginning of November, the remainder of the spaces under 2001 Richmond Highway will be unavailable. Drivers who typically park on the G2 level can park in other areas of the garage, specifically under 220 20th Street, 223 23rd Street, and 2221 S. Clark Street buildings. Additional way-finding signage will be added in the garage to help direct vehicles.
- At the end of November, the plaza level will be closing, and there will no longer be pedestrian access to and from 20th street to the rest of the plaza. New egress paths will be provided from the 220 20th St. and Crystal Plaza Apartment buildings, as shown on the provided map.
- The plaza level dog run will be closing at the beginning of below-grade demolition, however the JBG SMITH team is in the process of designing and relocating the dog run to a new location on the block.

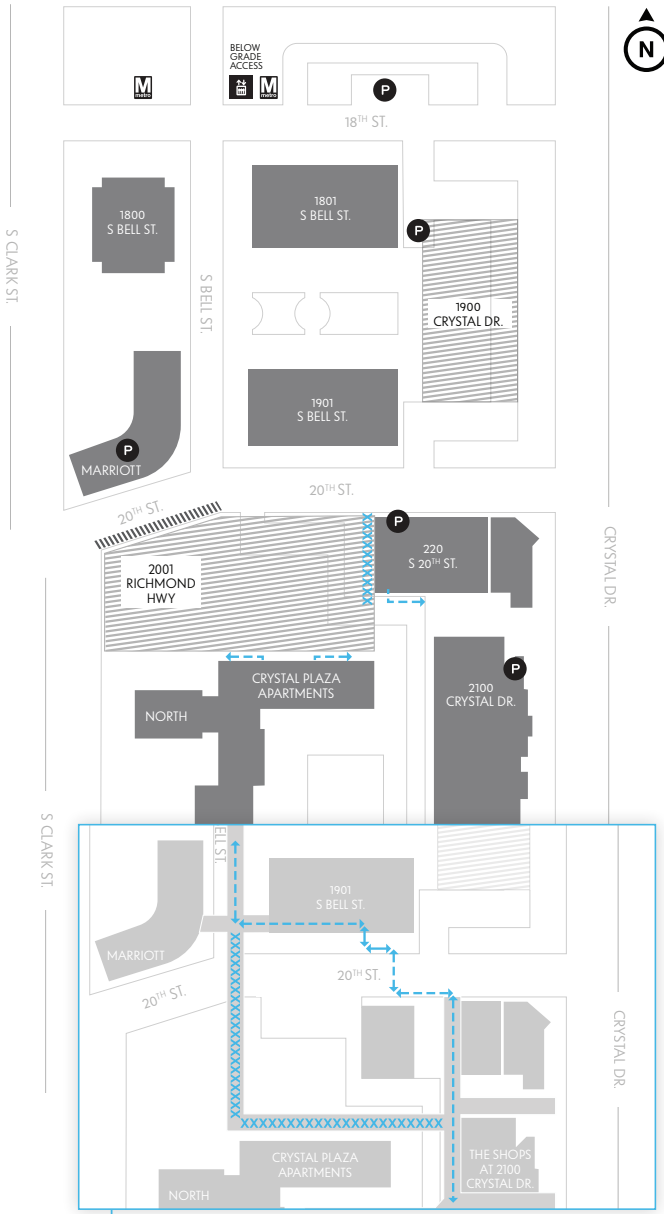
Please reference the map herein for more detailed information regarding the closures.

We appreciate your patience while we continue with the exciting transformation of National Landing. Please reach out to JBG SMITH at 2000_2001SouthBell@jbgsmith.com with any questions.

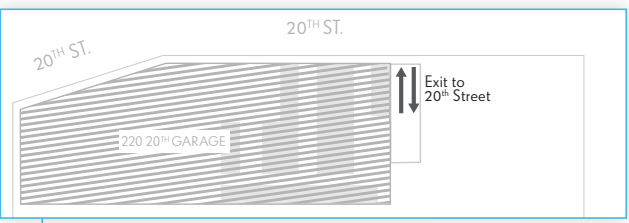
NL.JBGSMITH.COM



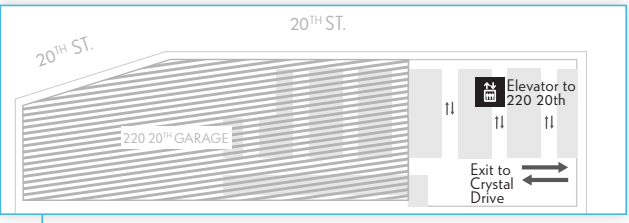
JBG SMITH
AT
NATIONAL
LANDING



UNDERGROUND CIRCULATION



GARAGE I LEVEL G1



GARAGE I LEVEL G2

NEW HAPPENINGS

Left: Check out the alternative routes and closures during construction. As construction progresses, closures and routes may change. We will keep you updated along the way.

- Vehicular Direction
- Covered Walkway
- Sidewalk Closure
- Pedestrian Direction
- Area Under Construction
- Road Closed
- Stair
- Elevator
- Parking