

An aerial view of a park area with a paved walkway, green lawn, and trees. People are seen walking, sitting on the grass, and playing. A woman in a grey hoodie is in the foreground on the left, and a man in a red shirt is walking away on the right. In the background, a large white structure with a glass facade is visible.

# CRYSTAL CITY OPEN SPACE FRAMEWORK

## VIRTUAL COMMUNITY WORKSHOP ONE: VISION & GOALS

---

*ARLINGTON, VIRGINIA  
JUNE 24, 2020*

---

National Landing BID  
JBG Smith  
Hoerr Schaudt Landscape Architects



# AGENDA

---

- COMMUNITY ENGAGEMENT PURPOSE & GOALS
- OVERVIEW OF COMMUNITY ENGAGEMENT PROCESS AND TIMELINE
- TAKEAWAYS FROM THE CRYSTAL CITY PARKS SOCIAL MEDIA WEBSITE
- REVIEW PREVIOUS CRYSTAL CITY OPEN SPACE INITIATIVES
- INTRODUCE OPEN SPACE FRAMEWORK PLAN VISION + GOALS
- Q&A
- CLOSING AND NEXT STEPS

# PURPOSE & GOALS

# COMMUNITY ENGAGEMENT GOALS

## 1. FOSTER COMMUNITY DIALOGUE

to inform open space planning efforts related to the development of JBG Smith properties

## 2. IDENTIFY COMMUNITY GOALS & PRIORITIES

to inform park programming, design and capital investment spending

## 3. PREPARE AN OPEN SPACE FRAMEWORK PLAN

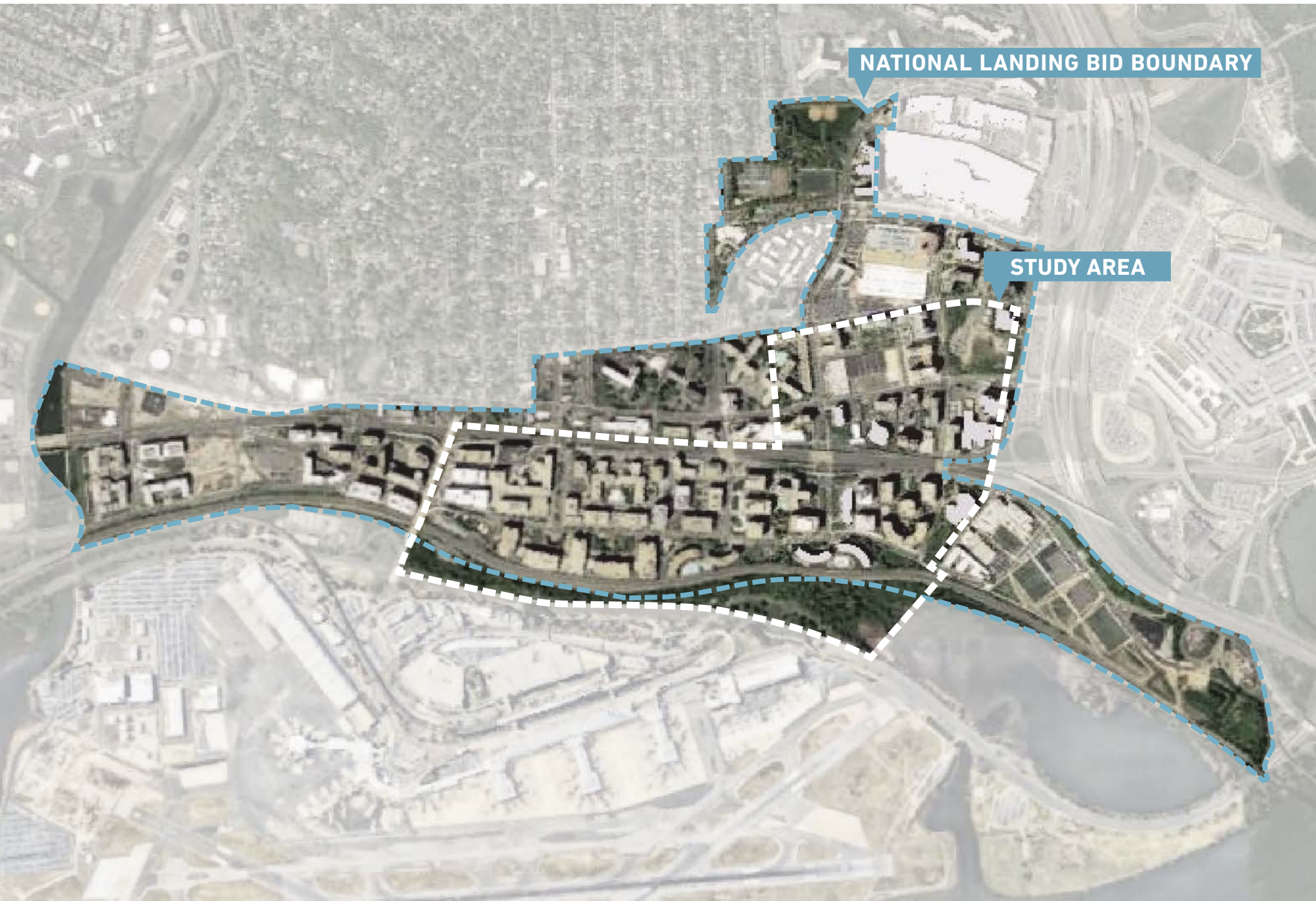
that reflects the current programming preferences and site conditions to inform the first phase of park development

# VISIONING QUESTIONS

1. Which open space priority is most important to you and why?
2. Which open space priorities are critical to a successful programming framework?
3. What should be the character of the Crystal City parks in 5 years?



# OPEN SPACE FRAMEWORK STUDY AREA



NATIONAL LANDING BID BOUNDARY

STUDY AREA



# OPEN SPACE FRAMEWORK PLAN



## JBG Smith Proffered Parks

- 1 Crystal Park
- 2 Center Park
- 3 23rd Street Plaza
- 4 Metro Market Square
- 5 Gateway Park

## JBG Smith Parks

- 6 Water Park
- 7 Friends Plaza
- 8 The Common

## Aspirational Parks / By Others

- 9 Pocket Park #8
- 10 Garden Park
- 11 North Gateway Park
- 12 Mets Park
- 13 Pen Place
- 14 Greenway Park
- 15 Long Bridge Park

# CRYSTAL CITY OPEN SPACE FRAMEWORK COMMUNITY ENGAGEMENT PROCESS

## WORKSHOP ONE: VISION & GOALS



### VIRTUAL COMMUNITY WORKSHOP ONE:

- HOSTED BY NATIONAL LANDING BID
- JUNE 24, 2020, 7:00PM - 8:00PM
- VIRTUAL WORKSHOP VIA ZOOM

### WORKSHOP ONE OBJECTIVES

- REVIEW COMMUNITY ENGAGEMENT PROCESS AND OUTCOMES
- INTRODUCE OPEN SPACE FRAMEWORK VISION, VALUES AND APPROACH
- IDENTIFY THE COMMUNITY'S GOALS AND PRIORITIES

## OPEN SPACE FRAMEWORK PRESENTATION



### IN ADVANCE OF WORKSHOP TWO:

- OPEN SPACE FRAMEWORK PRESENTATION POSTED ONLINE FOR COMMUNITY MEMBERS TO VIEW AT THEIR CONVENIENCE
- ONLINE SURVEY TO OBTAIN FEEDBACK

### FRAMEWORK PRESENTATION OBJECTIVES:

- IN DEPTH REVIEW OF PROGRAMMING FRAMEWORK AND PARK TYPOLOGIES
- COMPREHENSIVE ASSESSMENT OF OPEN SPACE IN SECTOR PLAN AND THE CRYSTAL CITY PARKS STUDY AREA
- COMPARE THE QUALITY AND QUANTITY OF THE SECTOR PLAN DETAILS WITH THE PROPOSED OPEN SPACE FRAMEWORK PLAN
- HIGH LEVEL PROGRAMMING SUMMARY FOR EACH PROFFERED PARK, INCLUDING:
  - CRYSTAL PARK
  - 23RD STREET PLAZA
  - CENTER PARK
  - METRO MARKET SQUARE
  - GATEWAY PARK

## WORKSHOP TWO: CONSENSUS BUILDING



### VIRTUAL COMMUNITY WORKSHOP TWO:

- HOSTED BY NATIONAL LANDING BID
- WORKSHOP DATE: TBD - JULY
- VIRTUAL WORKSHOP VIA ZOOM

### WORKSHOP TWO OBJECTIVES

- REVIEW THE PREVIOUSLY POSTED PRESENTATION OF THE OPEN SPACE FRAMEWORK PLAN FOR CRYSTAL CITY
- OBTAIN COMMUNITY FEEDBACK ABOUT PARK PROGRAMMING

## WORKSHOP THREE: CONCLUSIONS



### VIRTUAL COMMUNITY WORKSHOP THREE:

- HOSTED BY NATIONAL LANDING BID
- WORKSHOP DATE: TBD - SEPTEMBER
- VIRTUAL WORKSHOP VIA ZOOM
- REVIEW OF COMMUNITY FEEDBACK
- PRESENT THE REFINED OPEN SPACE PROGRAMMING FRAMEWORK AND INDIVIDUAL PARK CONCEPTS



# CRYSTAL CITY OPEN SPACE FRAMEWORK COMMUNITY ENGAGEMENT PROCESS

## WORKSHOP ONE: VISION & GOALS



### VIRTUAL COMMUNITY WORKSHOP ONE:

- HOSTED BY NATIONAL LANDING BID
- JUNE 24, 2020, 7:00PM - 8:00PM
- VIRTUAL WORKSHOP VIA ZOOM

### WORKSHOP ONE OBJECTIVES

- REVIEW COMMUNITY ENGAGEMENT PROCESS AND OUTCOMES
- INTRODUCE OPEN SPACE FRAMEWORK VISION, VALUES AND APPROACH
- IDENTIFY THE COMMUNITY'S GOALS AND PRIORITIES

## OPEN SPACE FRAMEWORK PRESENTATION



### IN ADVANCE OF WORKSHOP TWO:

- OPEN SPACE FRAMEWORK PRESENTATION POSTED ONLINE FOR COMMUNITY MEMBERS TO VIEW AT THEIR CONVENIENCE
- ONLINE SURVEY TO OBTAIN FEEDBACK

### FRAMEWORK PRESENTATION OBJECTIVES:

- IN DEPTH REVIEW OF PROGRAMMING FRAMEWORK AND PARK TYPOLOGIES
- COMPREHENSIVE ASSESSMENT OF OPEN SPACE IN SECTOR PLAN AND THE CRYSTAL CITY PARKS STUDY AREA
- COMPARE THE QUALITY AND QUANTITY OF THE SECTOR PLAN DETAILS WITH THE PROPOSED OPEN SPACE FRAMEWORK PLAN
- HIGH LEVEL PROGRAMMING SUMMARY FOR EACH PROFFERED PARK, INCLUDING:
  - CRYSTAL PARK
  - 23RD STREET PLAZA
  - CENTER PARK
  - METRO MARKET SQUARE
  - GATEWAY PARK

## WORKSHOP TWO: CONSENSUS BUILDING



### VIRTUAL COMMUNITY WORKSHOP TWO:

- HOSTED BY NATIONAL LANDING BID
- WORKSHOP DATE: TBD - JULY
- VIRTUAL WORKSHOP VIA ZOOM

### WORKSHOP TWO OBJECTIVES

- REVIEW THE PREVIOUSLY POSTED PRESENTATION OF THE OPEN SPACE FRAMEWORK PLAN FOR CRYSTAL CITY
- OBTAIN COMMUNITY FEEDBACK ABOUT PARK PROGRAMMING

## WORKSHOP THREE: CONCLUSIONS



### VIRTUAL COMMUNITY WORKSHOP THREE:

- HOSTED BY NATIONAL LANDING BID
- WORKSHOP DATE: TBD - SEPTEMBER
- VIRTUAL WORKSHOP VIA ZOOM
- REVIEW OF COMMUNITY FEEDBACK
- PRESENT THE REFINED OPEN SPACE PROGRAMMING FRAMEWORK AND INDIVIDUAL PARK CONCEPTS

# CRYSTAL CITY OPEN SPACE FRAMEWORK COMMUNITY ENGAGEMENT PROCESS

## WORKSHOP ONE: VISION & GOALS



### VIRTUAL COMMUNITY WORKSHOP ONE:

- HOSTED BY NATIONAL LANDING BID
- JUNE 24, 2020, 7:00PM - 8:00PM
- VIRTUAL WORKSHOP VIA ZOOM

### WORKSHOP ONE OBJECTIVES

- REVIEW COMMUNITY ENGAGEMENT PROCESS AND OUTCOMES
- INTRODUCE OPEN SPACE FRAMEWORK VISION, VALUES AND APPROACH
- IDENTIFY THE COMMUNITY'S GOALS AND PRIORITIES

## OPEN SPACE FRAMEWORK PRESENTATION



### IN ADVANCE OF WORKSHOP TWO:

- OPEN SPACE FRAMEWORK PRESENTATION POSTED ONLINE FOR COMMUNITY MEMBERS TO VIEW AT THEIR CONVENIENCE
- ONLINE SURVEY TO OBTAIN FEEDBACK

### FRAMEWORK PRESENTATION OBJECTIVES:

- IN DEPTH REVIEW OF PROGRAMMING FRAMEWORK AND PARK TYPOLOGIES
- COMPREHENSIVE ASSESSMENT OF OPEN SPACE IN SECTOR PLAN AND THE CRYSTAL CITY PARKS STUDY AREA
- COMPARE THE QUALITY AND QUANTITY OF THE SECTOR PLAN DETAILS WITH THE PROPOSED OPEN SPACE FRAMEWORK PLAN
- HIGH LEVEL PROGRAMMING SUMMARY FOR EACH PROFFERED PARK, INCLUDING:
  - CRYSTAL PARK
  - 23RD STREET PLAZA
  - CENTER PARK
  - METRO MARKET SQUARE
  - GATEWAY PARK

## WORKSHOP TWO: CONSENSUS BUILDING



### VIRTUAL COMMUNITY WORKSHOP TWO:

- HOSTED BY NATIONAL LANDING BID
- WORKSHOP DATE: TBD - JULY
- VIRTUAL WORKSHOP VIA ZOOM

### WORKSHOP TWO OBJECTIVES

- REVIEW THE PREVIOUSLY POSTED PRESENTATION OF THE OPEN SPACE FRAMEWORK PLAN FOR CRYSTAL CITY
- OBTAIN COMMUNITY FEEDBACK ABOUT PARK PROGRAMMING

## WORKSHOP THREE: CONCLUSIONS



### VIRTUAL COMMUNITY WORKSHOP THREE:

- HOSTED BY NATIONAL LANDING BID
- WORKSHOP DATE: TBD - SEPTEMBER
- VIRTUAL WORKSHOP VIA ZOOM
- REVIEW OF COMMUNITY FEEDBACK
- PRESENT THE REFINED OPEN SPACE PROGRAMMING FRAMEWORK AND INDIVIDUAL PARK CONCEPTS



# CRYSTAL CITY OPEN SPACE FRAMEWORK COMMUNITY ENGAGEMENT PROCESS

## WORKSHOP ONE: VISION & GOALS



### VIRTUAL COMMUNITY WORKSHOP ONE:

- HOSTED BY NATIONAL LANDING BID
- JUNE 24, 2020, 7:00PM - 8:00PM
- VIRTUAL WORKSHOP VIA ZOOM

### WORKSHOP ONE OBJECTIVES

- REVIEW COMMUNITY ENGAGEMENT PROCESS AND OUTCOMES
- INTRODUCE OPEN SPACE FRAMEWORK VISION, VALUES AND APPROACH
- IDENTIFY THE COMMUNITY'S GOALS AND PRIORITIES

## OPEN SPACE FRAMEWORK PRESENTATION



### IN ADVANCE OF WORKSHOP TWO:

- OPEN SPACE FRAMEWORK PRESENTATION POSTED ONLINE FOR COMMUNITY MEMBERS TO VIEW AT THEIR CONVENIENCE
- ONLINE SURVEY TO OBTAIN FEEDBACK

### FRAMEWORK PRESENTATION OBJECTIVES:

- IN DEPTH REVIEW OF PROGRAMMING FRAMEWORK AND PARK TYPOLOGIES
- COMPREHENSIVE ASSESSMENT OF OPEN SPACE IN SECTOR PLAN AND THE CRYSTAL CITY PARKS STUDY AREA
- COMPARE THE QUALITY AND QUANTITY OF THE SECTOR PLAN DETAILS WITH THE PROPOSED OPEN SPACE FRAMEWORK PLAN
- HIGH LEVEL PROGRAMMING SUMMARY FOR EACH PROFFERED PARK, INCLUDING:
  - CRYSTAL PARK
  - 23RD STREET PLAZA
  - CENTER PARK
  - METRO MARKET SQUARE
  - GATEWAY PARK

## WORKSHOP TWO: CONSENSUS BUILDING



### VIRTUAL COMMUNITY WORKSHOP TWO:

- HOSTED BY NATIONAL LANDING BID
- WORKSHOP DATE: TBD - JULY
- VIRTUAL WORKSHOP VIA ZOOM

### WORKSHOP TWO OBJECTIVES

- REVIEW THE PREVIOUSLY POSTED PRESENTATION OF THE OPEN SPACE FRAMEWORK PLAN FOR CRYSTAL CITY
- OBTAIN COMMUNITY FEEDBACK ABOUT PARK PROGRAMMING

## WORKSHOP THREE: CONCLUSIONS



### VIRTUAL COMMUNITY WORKSHOP THREE:

- HOSTED BY NATIONAL LANDING BID
- WORKSHOP DATE: TBD - SEPTEMBER
- VIRTUAL WORKSHOP VIA ZOOM
- REVIEW OF COMMUNITY FEEDBACK
- PRESENT THE REFINED OPEN SPACE PROGRAMMING FRAMEWORK AND INDIVIDUAL PARK CONCEPTS

**CRYSTAL CITY PARKS  
SOCIAL MEDIA WEBSITE**



# CRYSTAL CITY PARKS WEBSITE



Crystal City Parks Subscribe

OVERVIEW INFO **COMMENTS** <sup>274</sup> METHODOLOGY THE 5 PARKS UPDATES <sup>3</sup> TIMELINE

< (1/9) Open Space >

What is your favorite activity or feature at Crystal City open spaces?

[See responses](#)

- Sports Fields/Courts/Game Spaces
- Kids Playgrounds
- Flexible open space for events
- Water Features
- Garden Spaces

Participation on coUrbanize is subject to our [Community Guidelines](#).

Skip

Post Comment

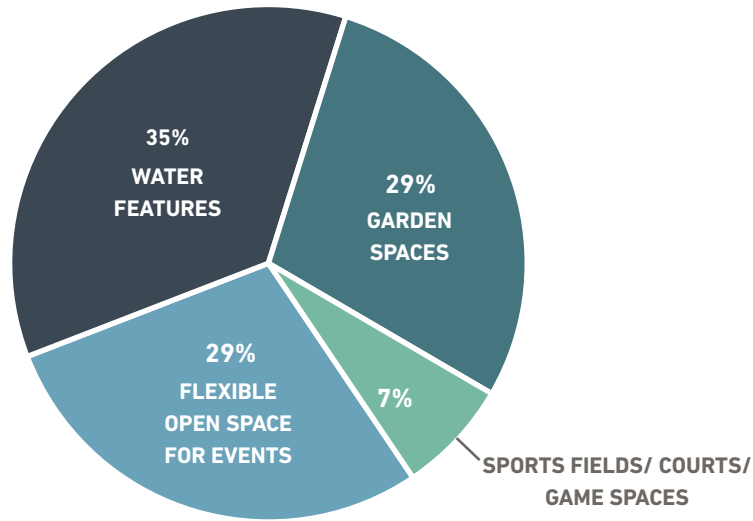


**SITE VISITS**  
**715**

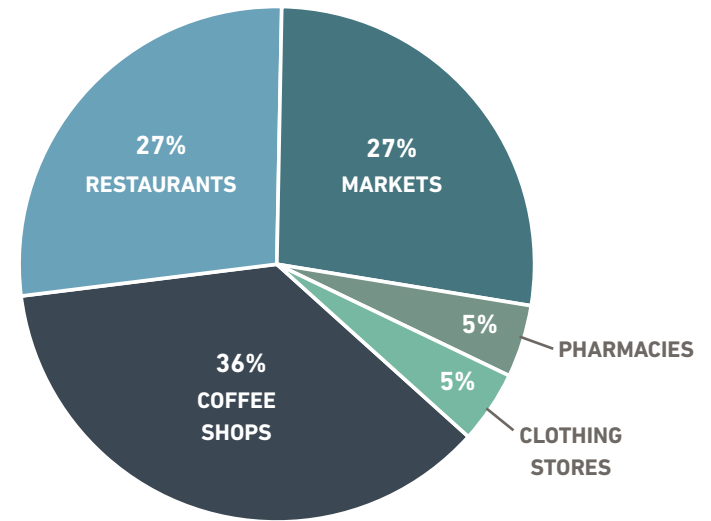


**COMMENTS**  
**274**

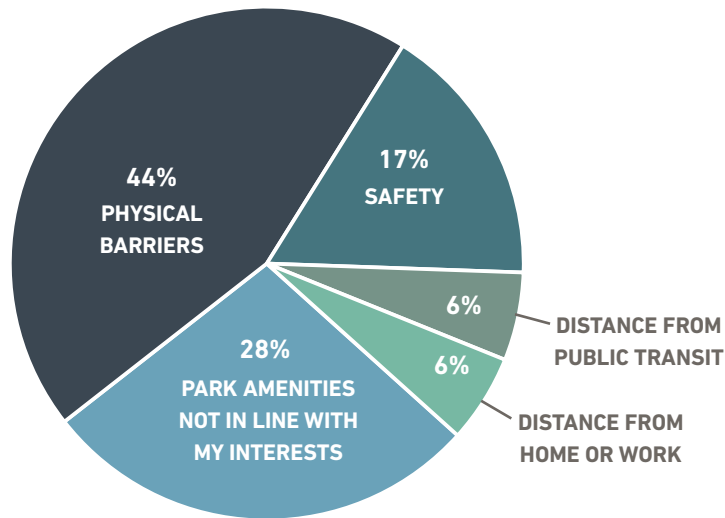
# CRYSTAL CITY PARKS WEBSITE FEEDBACK



WHAT IS YOUR FAVORITE ACTIVITY OR FEATURE AT CRYSTAL CITY OPEN SPACES?



WHAT RETAIL OR DINING EXPERIENCES WOULD YOU LIKE TO SEE IN OR ADJACENT TO CRYSTAL CITY PARKS?



WHAT BARRIERS DO YOU SEE TO ACCESSING THE PARKS IN CRYSTAL CITY?

HOW DO YOU GET TO THESE PARKS?



ARE YOU TYPICALLY COMING FROM HOME OR WORK?





# CRYSTAL CITY PARKS WEBSITE FEEDBACK

## WHAT IS YOUR FAVORITE NEIGHBORHOOD SCALED PARK IN CC? WHY?

**37% LONG BRIDGE PARK**

Views / Plantings / Seating / Walking Paths /  
Views of Soccer Fields

**29% WATER PARK**

Water Fountains / Events /  
Food Stand / Plantings

**19% GATEWAY PARK**

Green Spaces / Moveable Seating /  
Serves Kids & Dogs in All Seasons

**7% OPEN GREEN SPACE OUTSIDE  
LONG BRIDGE PARK**

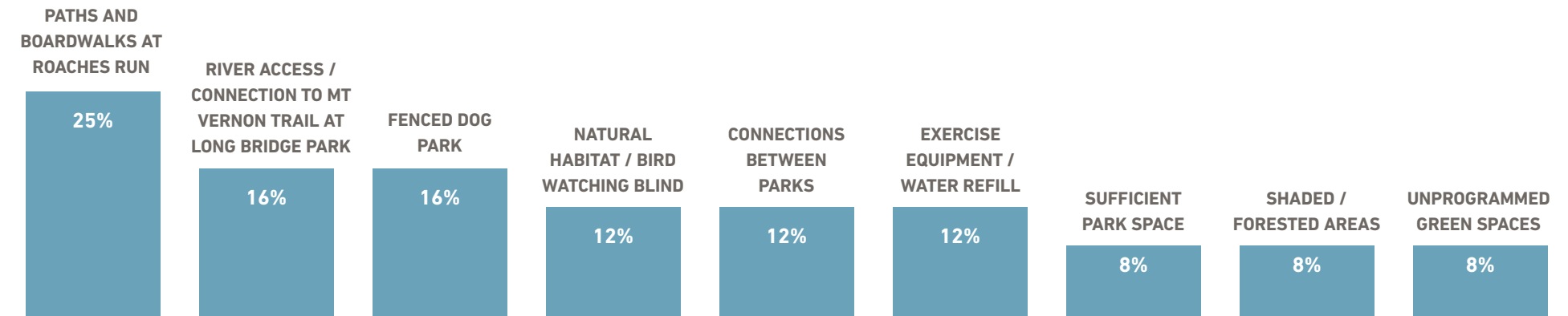
**7% PARKS WITH AREAS FOR  
WALKING AND JOGGING**

## WHAT IS YOUR FAVORITE PARK SPACE IN THE DC AREA? WHY?

4 MILE RUN / ROCK CREEK PARK / WATER PARK / LONG BRIDGE PARK /  
VIRGINIA HIGHLANDS PARK / NATIONAL MALL / SHIRLINGTON DOG PARK /  
C&O TOWPATH / POTOMAC YARD PARK / BARTHOLDI GARDENS / HUNTLEY  
MEADOWS PARK / MASON NECK STATE PARK

WILDFLOWERS WATER FEATURES  
TREES / SHADE PLAYGROUND LARGE  
OASIS FROM URBAN LIFE RIVER VIEWS  
TRAILS / WALKING PATHS  
KAYAKING BIRDWATCHING PLANNED SPACES  
FLEXIBLE OPEN SPACE WOODED AREAS  
CONVENIENT OUTSTANDING PLANTS  
BIKE PATHS

## WHAT DOES CRYSTAL CITY LACK IN TERMS OF PARK AMENITIES?



**BUILDING UPON PREVIOUS  
COMMUNITY ENGAGEMENT INITIATIVES**

# 22202 LIVABILITY FRAMEWORK: OPEN SPACE WORKSHOP



*Resident-led initiative hosted by the Arlington Ridge, Aurora Highlands, and Crystal City Civic Associations*

*Open Space Workshop held February 22, 2020, consisting of small working groups focused on the following:*

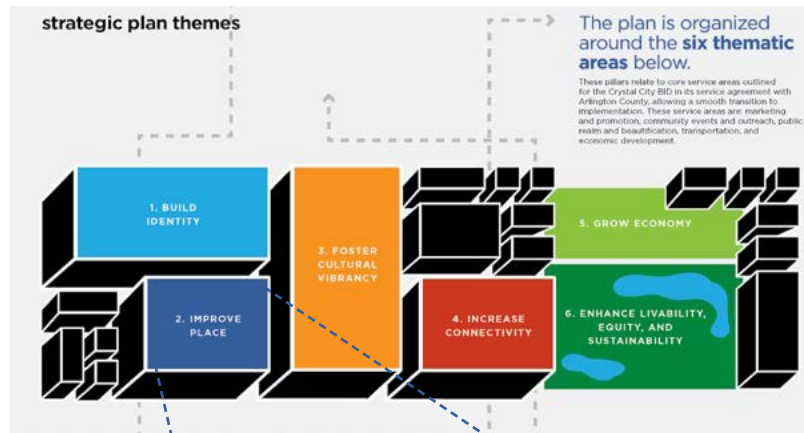
- 1. Crystal City parks*
- 2. Virginia Highlands park*
- 3. Roaches Run*
- 4. Promoting connections to nature and biodiversity throughout 22202*

*Common Crystal City park themes heard during the workshop included:*

- Improve park connectivity*
- Improve open space character and sense of place*
- Provide neighborhood park amenities*
- Provide active park programming*
- Find creative solutions for Stormwater Management*
- Introduce opportunities for urban agriculture*
- Provide educational signage*



# BID AREA-WIDE STRATEGIC PLAN: APRIL 2019



## CREATE AND HIGHLIGHT A GREEN NETWORK

- *Create a 'Green Print' Open Space Guide*
- *Provide Conceptual Park Design Assistance to Owners and the County*
- *Complete a Signature Green Network that Connects Existing and Planned Open Spaces*
- *Emphasize Sustainability, High-Performance, and Health Benefits of Projects*
- *Engage the Community to Determine Best Uses and Design for New Open Areas*
- *Implement Attractive, High-Performance Landscape Enhancements*
- *Increase the Use of Native Plants in Landscape Design*

# ARLINGTON COUNTY PUBLIC SPACES MASTER PLAN: APRIL 2019



Open

Natural

Flexible

Visible



Lucky Run Park, Arlington County



Rocky Run Park, Arlington County

## CASUAL USE SPACES

*'The community consistently expressed a strong desire to preserve and intentionally create spaces that can be used for relaxation, reflection and informal activities — what this plan refers to as "casual use" spaces.'*

# CRYSTAL CITY SECTOR PLAN: 2010

## SECTOR PLAN GOALS & PRIORITIES

- *Result of a highly participatory planning process completed in 2010*
- *Defines planning strategies for creating a pedestrian-oriented, high quality public realm*
- *Establishes guidelines for the quantity and quality of public space to be provided*
- *The Open Space Framework plan looks to implement these recommendations adapting them to current and future development conditions specific to the JBG Smith park properties*





# **OPEN SPACE FRAMEWORK PLAN VISION**

# VISION + GOALS





# VISION + GOALS



San Miguel Plaza, Madrid, SP



Olympic Sculpture Park, Seattle, WA

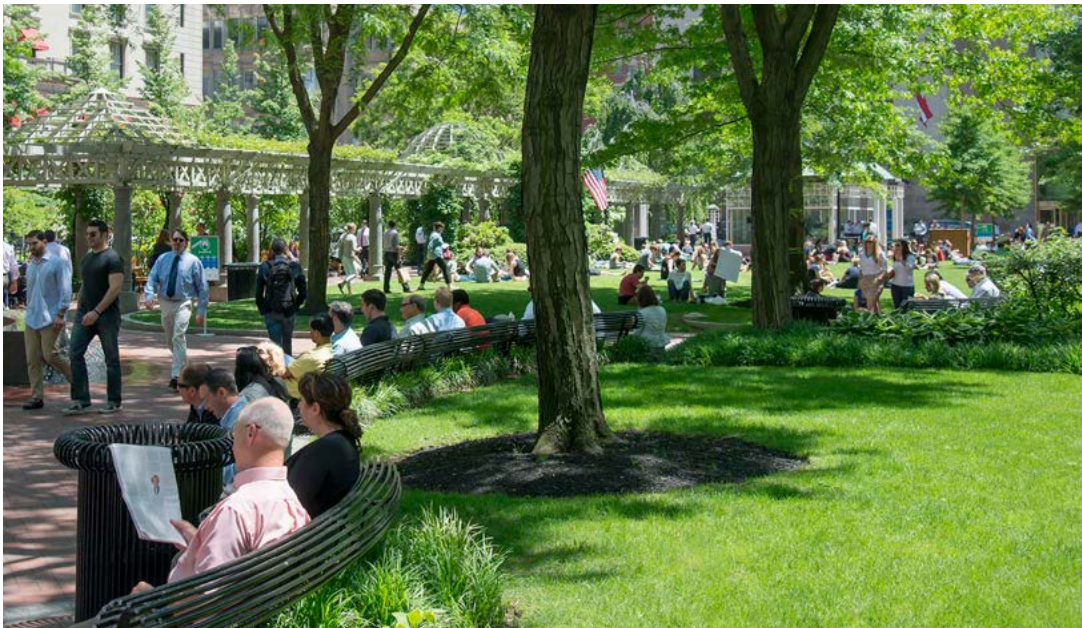


Yorkville Park, Toronto, ON

**1** *Create a New Community Identity  
Through the Design of the Public Realm*



# VISION + GOALS



**2** Utilize the Public Realm to Catalyze Regeneration and Development



# VISION + GOALS



**3** *Connect the Community with a Network of Streets, Plazas and Parks*



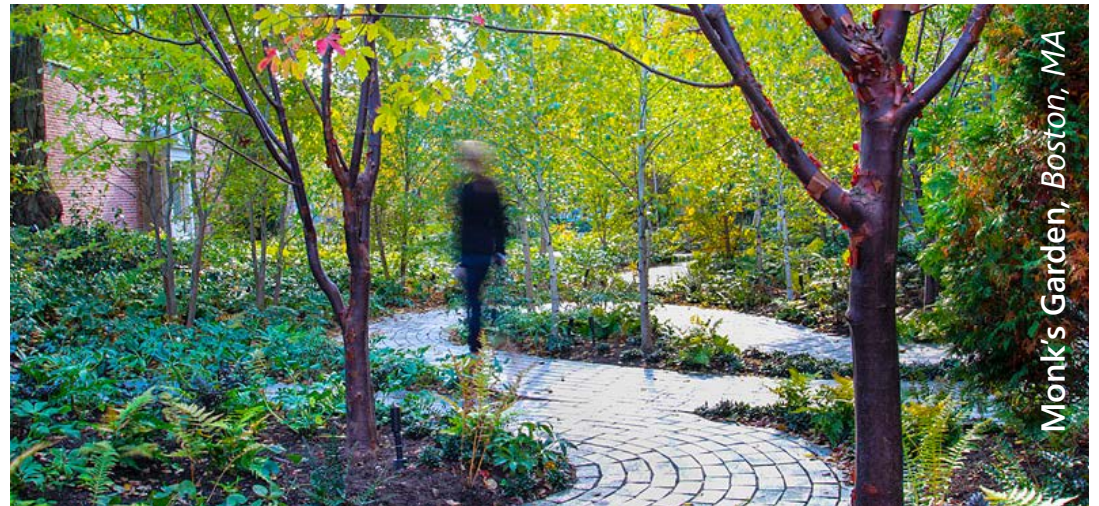
# VISION + GOALS



Paley Park, New York, NY



Post Office Square, Boston, MA



Monk's Garden, Boston, MA

**4** *Create Public Spaces with Variety in Scale, Program, and Design*



# VISION + GOALS



**5** *Activate Public Spaces with Diverse Program and Attractors*



# VISION + GOALS

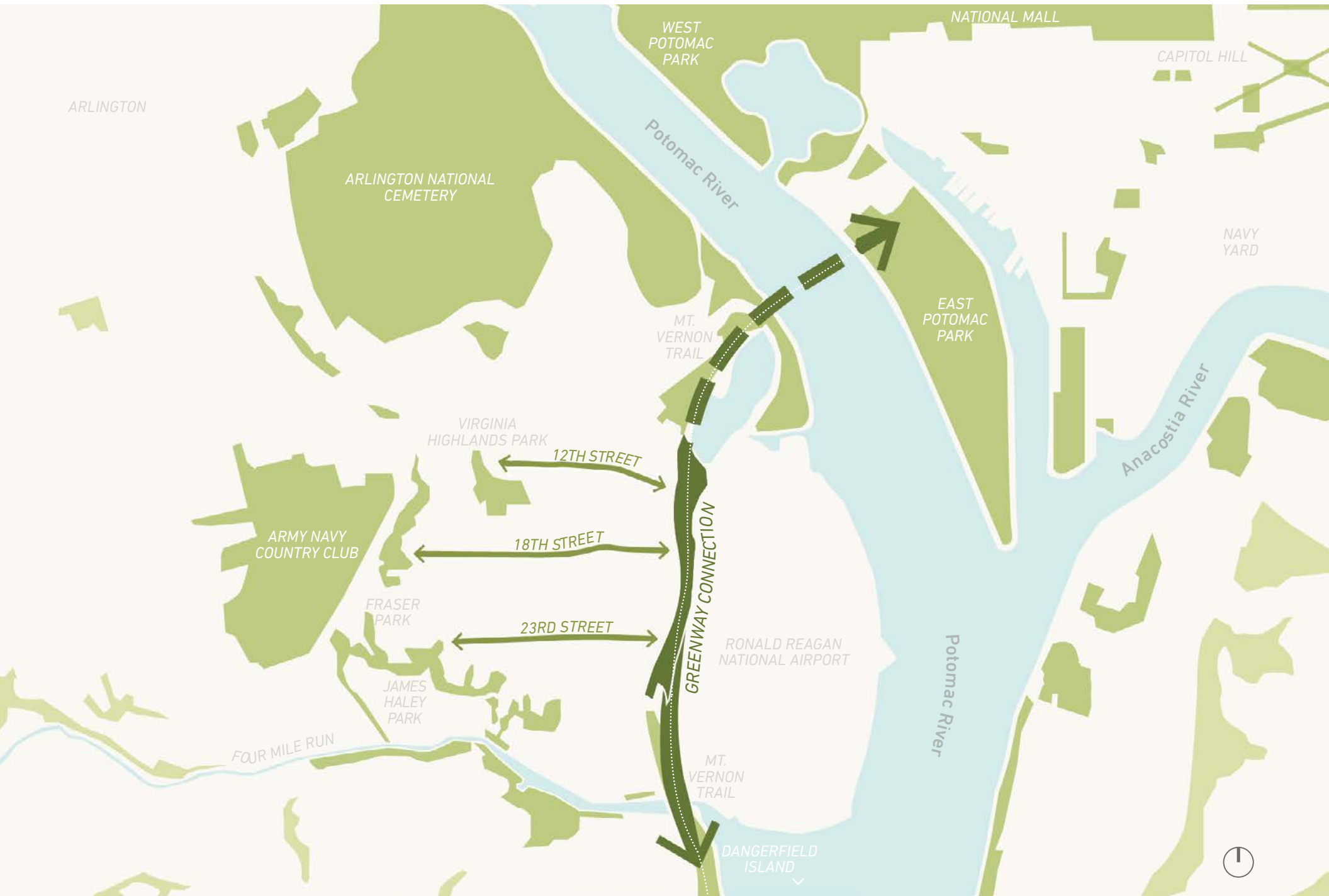


**6** *Design for Tomorrow; with Emphasis on Equity and Inclusion, Sustainability, Wellness and Technology*

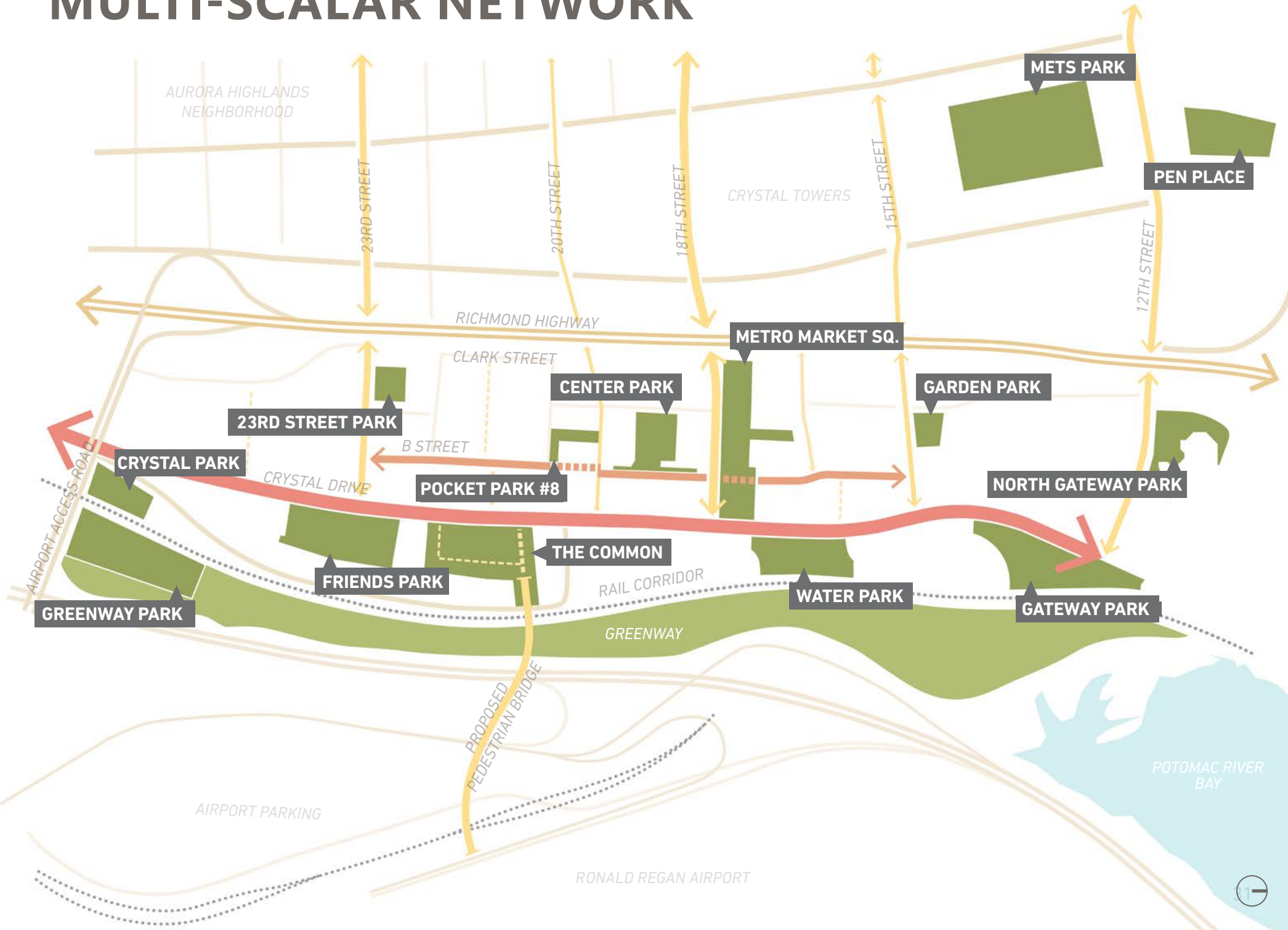
# **OPEN SPACE FRAMEWORK PLAN APPROACH**



# MULTI-SCALAR NETWORK



# MULTI-SCALAR NETWORK

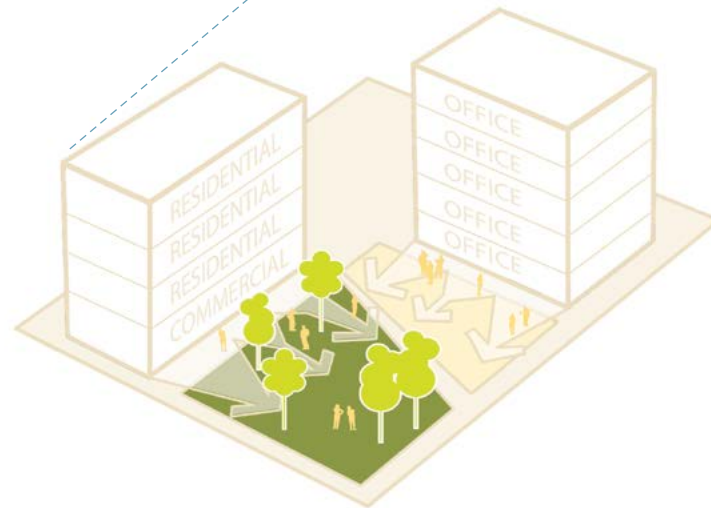


# MULTI-SCALAR NETWORK



## MACRO SCALE

*Open space work together as a larger network*



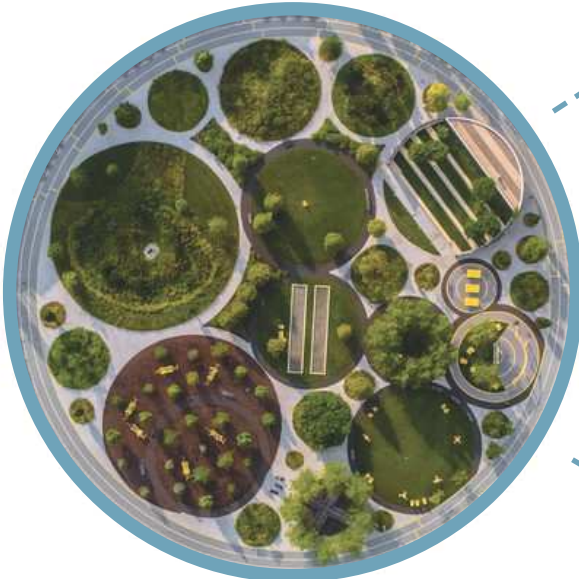
## MICRO SCALE

*Open space localized to serve specific program adjacencies*



# MANY CENTERS FOR PUBLIC LIFE

A modern park...  
distributed...



*Navy Yards Central Green  
Philadelphia, PA*

Game Room

Event Lawn

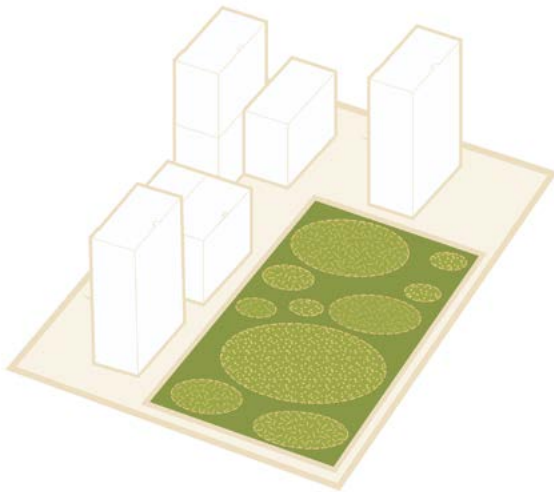
Event Space

Gathering

Passive Recreation

Active Recreation

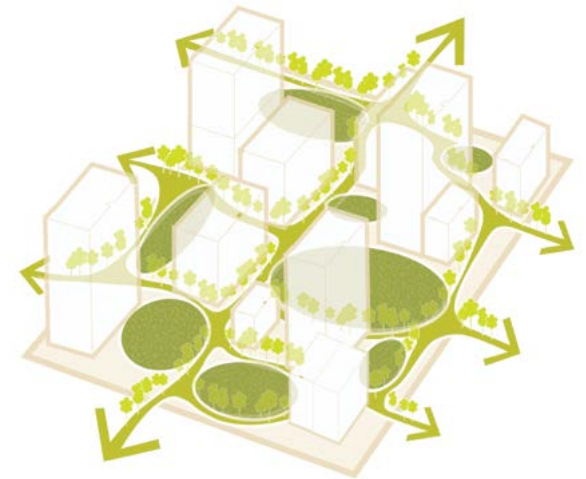
# COMMUNITY CONNECTIONS



*A Traditional Large Urban Park..*

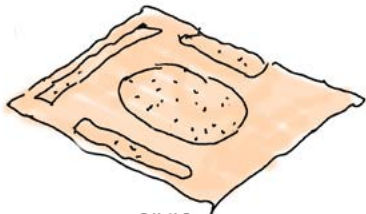


*..Distributed Within a Greater Landscape*



*Connected to Each Other and to a Larger Region*

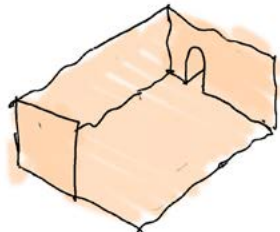
# PROGRAMMING METHODOLOGY



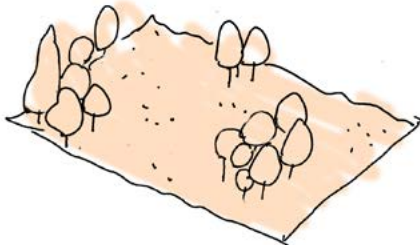
CIVIC



GATEWAY

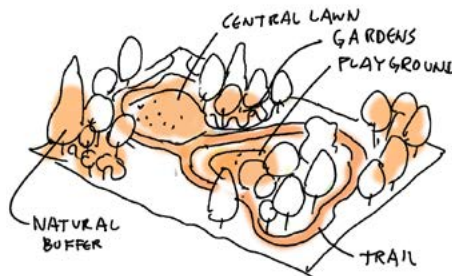
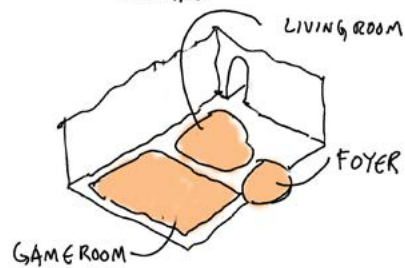
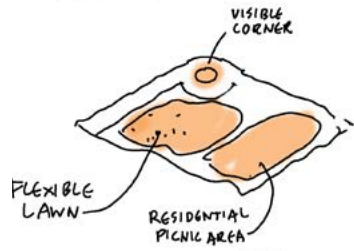
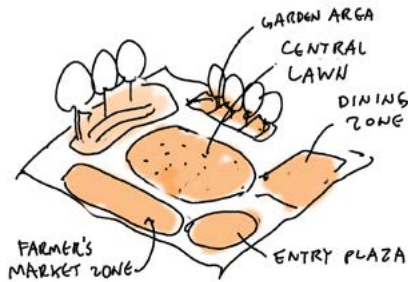


POCKET

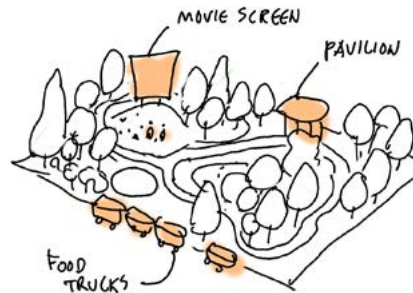
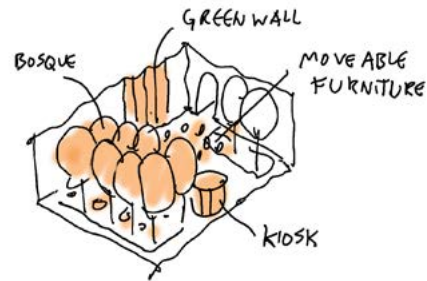
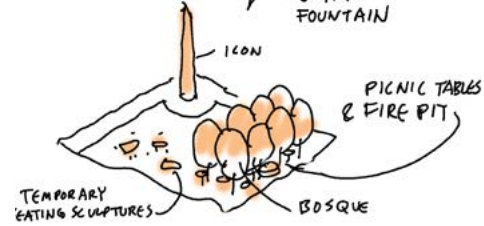
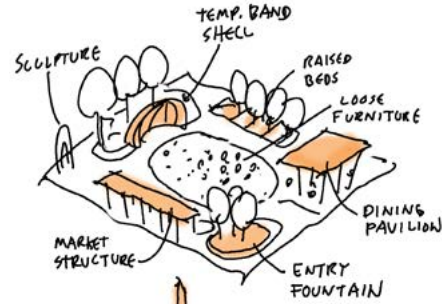


NATURE

1 TYPOLOGY



2 PROGRAM



3 ELEMENTS



4 ACTIVATE



# OPEN SPACE FRAMEWORK PLAN



## JBG Smith Proffered Parks

- 1 Crystal Park
- 2 Center Park
- 3 23rd Street Plaza
- 4 Metro Market Square
- 5 Gateway Park

## JBG Smith Parks

- 6 Water Park
- 7 Friends Plaza
- 8 The Common

## Aspirational Parks / By Others

- 9 Pocket Park #8
- 10 Garden Park
- 11 North Gateway Park
- 12 Mets Park
- 13 Pen Place
- 14 Greenway Park
- 15 Long Bridge Park

# NEXT STEPS

## WORKSHOP ONE: VISION & GOALS



### VIRTUAL COMMUNITY WORKSHOP ONE:

- HOSTED BY NATIONAL LANDING BID
- JUNE 24, 2020, 7:00PM - 8:00PM
- VIRTUAL WORKSHOP VIA ZOOM

### WORKSHOP ONE OBJECTIVES

- REVIEW COMMUNITY ENGAGEMENT PROCESS AND OUTCOMES
- INTRODUCE OPEN SPACE FRAMEWORK VISION, VALUES AND APPROACH
- IDENTIFY THE COMMUNITY'S GOALS AND PRIORITIES

## OPEN SPACE FRAMEWORK PRESENTATION



### IN ADVANCE OF WORKSHOP TWO:

- OPEN SPACE FRAMEWORK PRESENTATION POSTED ONLINE FOR COMMUNITY MEMBERS TO VIEW AT THEIR CONVENIENCE
- ONLINE SURVEY TO OBTAIN FEEDBACK

### FRAMEWORK PRESENTATION OBJECTIVES:

- IN DEPTH REVIEW OF PROGRAMMING FRAMEWORK AND PARK TYPOLOGIES
- COMPREHENSIVE ASSESSMENT OF OPEN SPACE IN SECTOR PLAN AND THE CRYSTAL CITY PARKS STUDY AREA
- COMPARE THE QUALITY AND QUANTITY OF THE SECTOR PLAN DETAILS WITH THE PROPOSED OPEN SPACE FRAMEWORK PLAN
- HIGH LEVEL PROGRAMMING SUMMARY FOR EACH PROFFERED PARK, INCLUDING:
  - CRYSTAL PARK
  - 23RD STREET PLAZA
  - CENTER PARK
  - METRO MARKET SQUARE
  - GATEWAY PARK

## WORKSHOP TWO: CONSENSUS BUILDING



### VIRTUAL COMMUNITY WORKSHOP TWO:

- HOSTED BY NATIONAL LANDING BID
- WORKSHOP DATE: TBD - JULY
- VIRTUAL WORKSHOP VIA ZOOM

### WORKSHOP TWO OBJECTIVES

- REVIEW THE PREVIOUSLY POSTED PRESENTATION OF THE OPEN SPACE FRAMEWORK PLAN FOR CRYSTAL CITY
- OBTAIN COMMUNITY FEEDBACK ABOUT PARK PROGRAMMING

## WORKSHOP THREE: CONCLUSIONS



### VIRTUAL COMMUNITY WORKSHOP THREE:

- HOSTED BY NATIONAL LANDING BID
- WORKSHOP DATE: TBD - SEPTEMBER
- VIRTUAL WORKSHOP VIA ZOOM
- REVIEW OF COMMUNITY FEEDBACK
- PRESENT THE REFINED OPEN SPACE PROGRAMMING FRAMEWORK AND INDIVIDUAL PARK CONCEPTS



# BREAKOUT ROOM DISCUSSIONS

1. You will automatically be directed into a small group chat room with approximately 8 participants and a group facilitator.
2. The facilitator will introduce themselves and review the visioning questions. These are intended as a discussion guide.
3. Introduce yourself and your relationship to the neighborhood. Each participant will have an opportunity to speak, ask questions, and provide feedback. Approximately 2-3 minutes per response.
4. At the end of the 20-minute time period, you will automatically be re-directed back to the large group meeting.
5. Each facilitator will share some of the common themes and feedback with the larger group prior to closing.

# VISIONING QUESTIONS

1. Which open space priority is most important to you and why?
2. Which open space priorities are critical to a successful programming framework?
3. What should be the character of the Crystal City parks in 5 years?



# VISION + GOALS

