



Riverwalk Plaza

200 S Washington St, Green Bay, WI 54301

Jacob Heezen

Nicolet Real Estate

200 S Washington St, Green Bay, WI 54301

jheezen@morley-murphycompany.com

(920) 246-3557



Riverwalk Plaza

\$24.00 /SF/YR

Riverwalk Plaza is situated along the Fox River in the heart of the historic business district of downtown Green Bay. The building is walking distance to many restaurants, pubs, boutique shops, Hagemeister Park, YMCA, public library, and more. Just steps out of the building is the Fox River Trail, which is a walking/biking trail that stretches for miles along the Fox River with fantastic views and great places to stop along the way. Premier accommodations (Hotel Northland and the Hyatt Regency) as well as newly constructed apartment/condo buildings also within a few block radius. Riverwalk Plaza offers the chance to be situated at the heart of an area that has been rapidly...

- Situated on Fox River with excellent views
- Walking distance to restaurants, pubs, boutiques, shops, etc.
- Fox River Walking Trail access behind building
- Located in rapidly redeveloping area
- Blocks from two premier Green Bay hotels and new apartment/condo buildings
- On-site parking



Rental Rate:	\$24.00 /SF/YR
Property Type:	Office
Building Class:	B
Rentable Building Area:	40,000 SF
Year Built:	1998
Walk Score ®:	81 (Very Walkable)
Transit Score ®:	38 (Some Transit)
Rental Rate Mo:	\$2.00 /SF/MO

3rd Floor Ste 305

Space Available	1,685 SF
Rental Rate	\$24.00 /SF/YR
Date Available	May 31, 2023
Service Type	Full Service
Built Out As	Standard Office
Space Type	Relet
Space Use	Office
Lease Term	2 - 6 Years



200 S Washington St, Green Bay, WI 54301

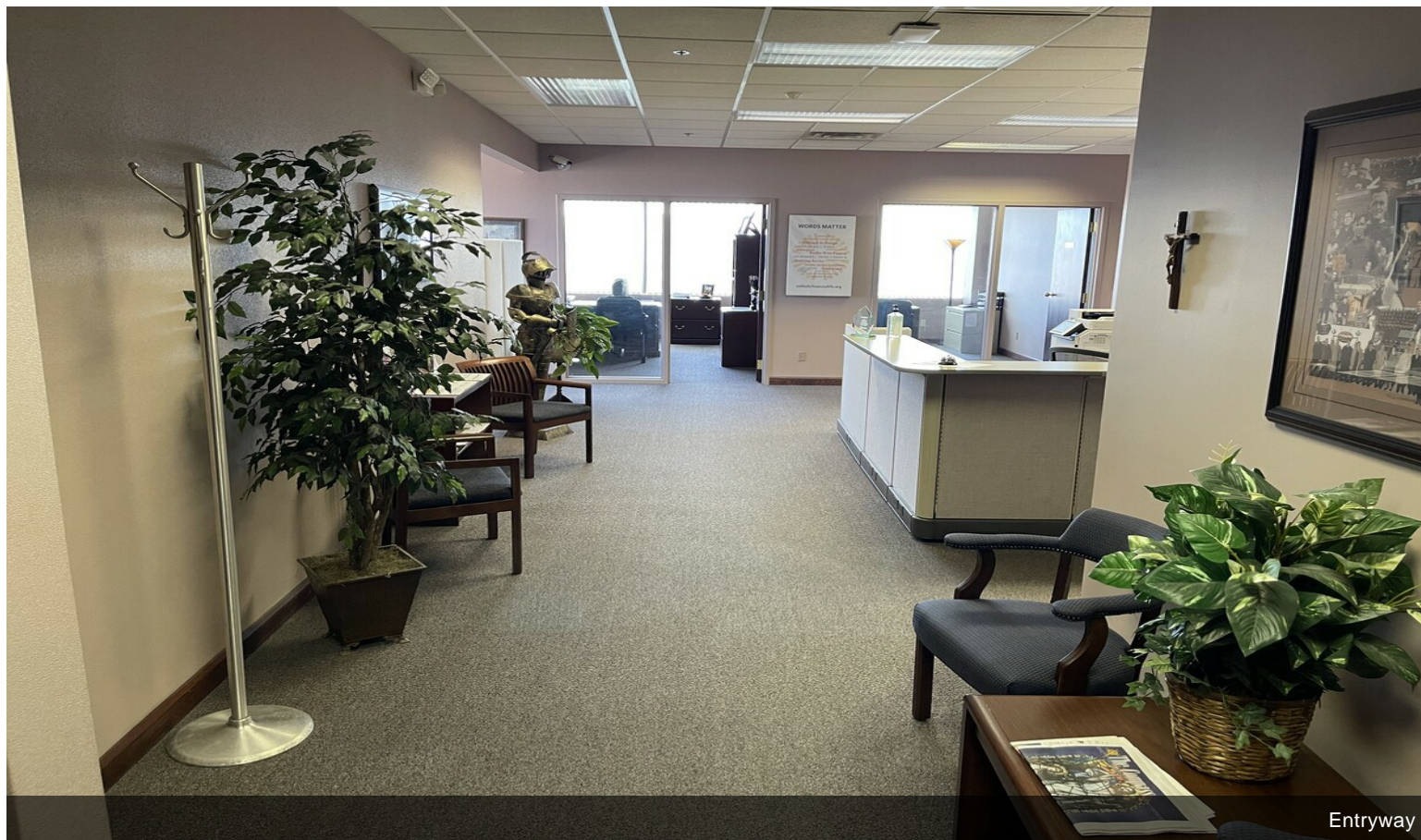
Riverwalk Plaza is situated along the Fox River in the heart of the historic business district of downtown Green Bay. The building is walking distance to many restaurants, pubs, boutique shops, Hagemeister Park, YMCA, public library, and more. Just steps out of the building is the Fox River Trail, which is a walking/biking trail that stretches for miles along the Fox River with fantastic views and great places to stop along the way. Premier accommodations (Hotel Northland and the Hyatt Regency) as well as newly constructed apartment/condo buildings also within a few block radius. Riverwalk Plaza offers the chance to be situated at the heart of an area that has been rapidly growing and redeveloping in the previous years and continues to do so.

Suite 305 is located on the 3rd floor of the building and offers 6 private office spaces (or substitute conference room for 1 office space), reception area, kitchenette, secure basement storage, and common area that can be utilized for workstations as well. Tenants have 24/7 access to the building and are assigned their own suite keys. Building doors are open to customers/clients 7:30 a.m. - 5:30 p.m., Monday-Friday - all afterhours access is done via key fob. Plenty of on-site parking is available for tenants and guest parking is provided in front of the building for clientele.

Property Photos

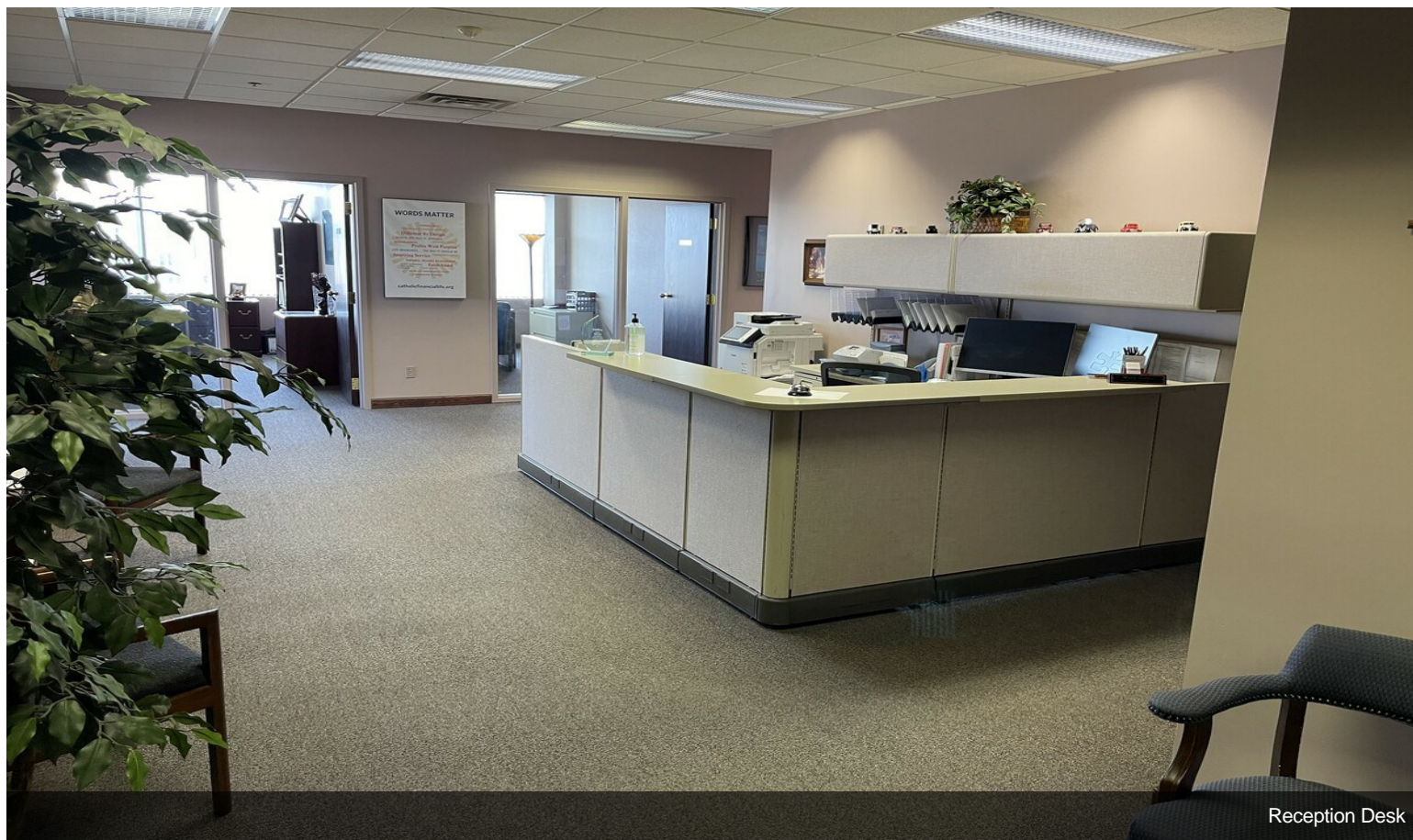


Walking Trail Behind Building

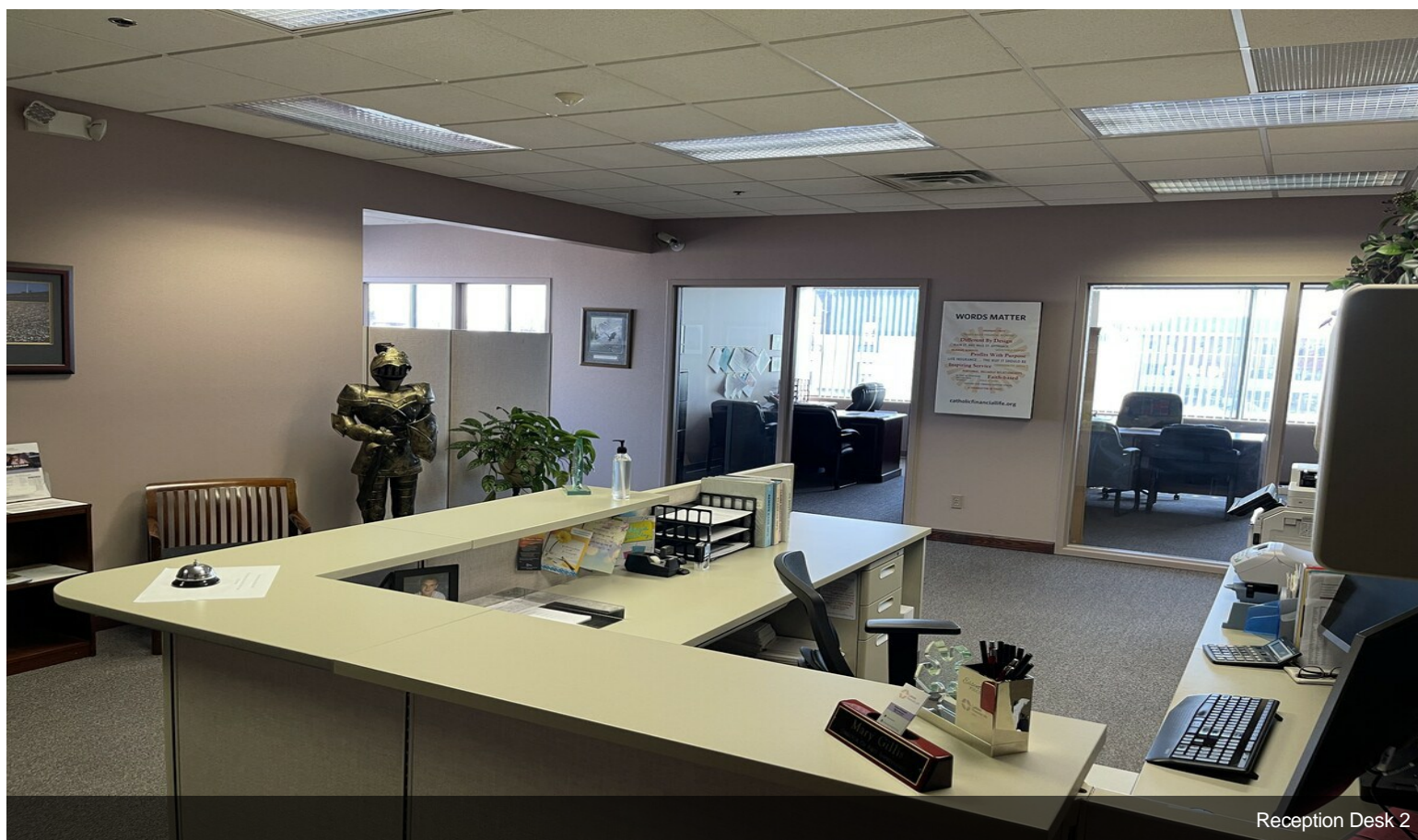


Entryway

Property Photos



Reception Desk

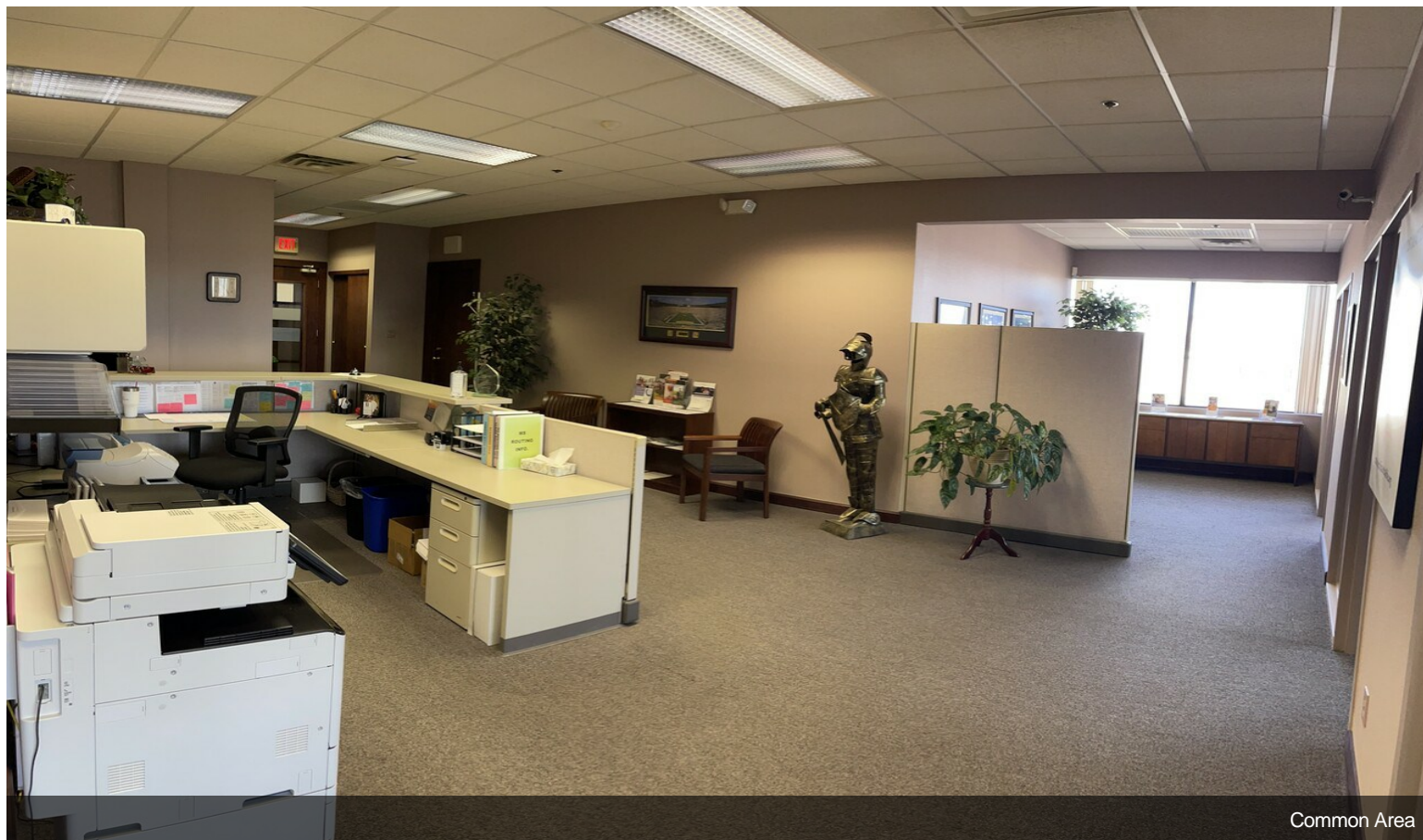


Reception Desk 2

Property Photos

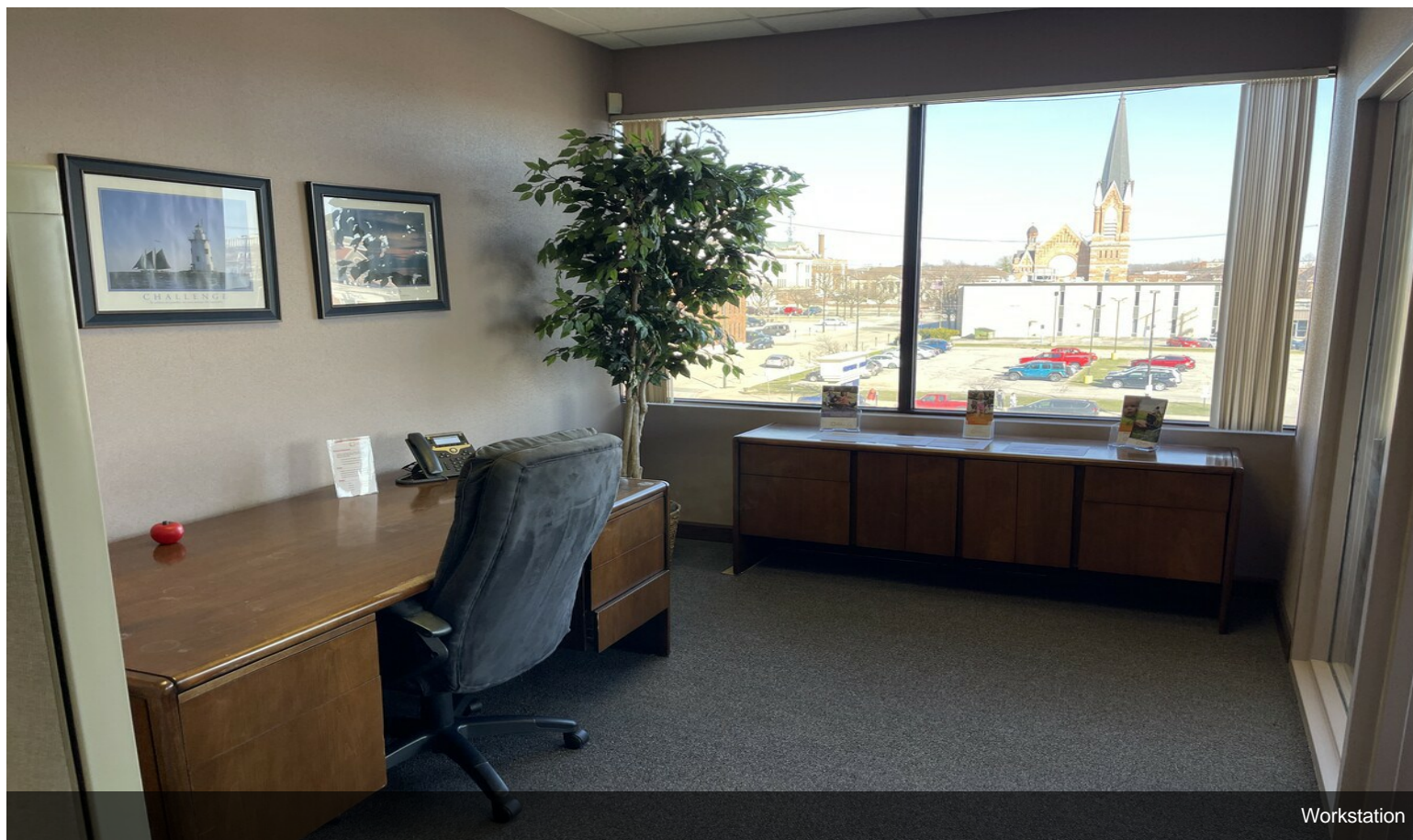


Front Door to Suite

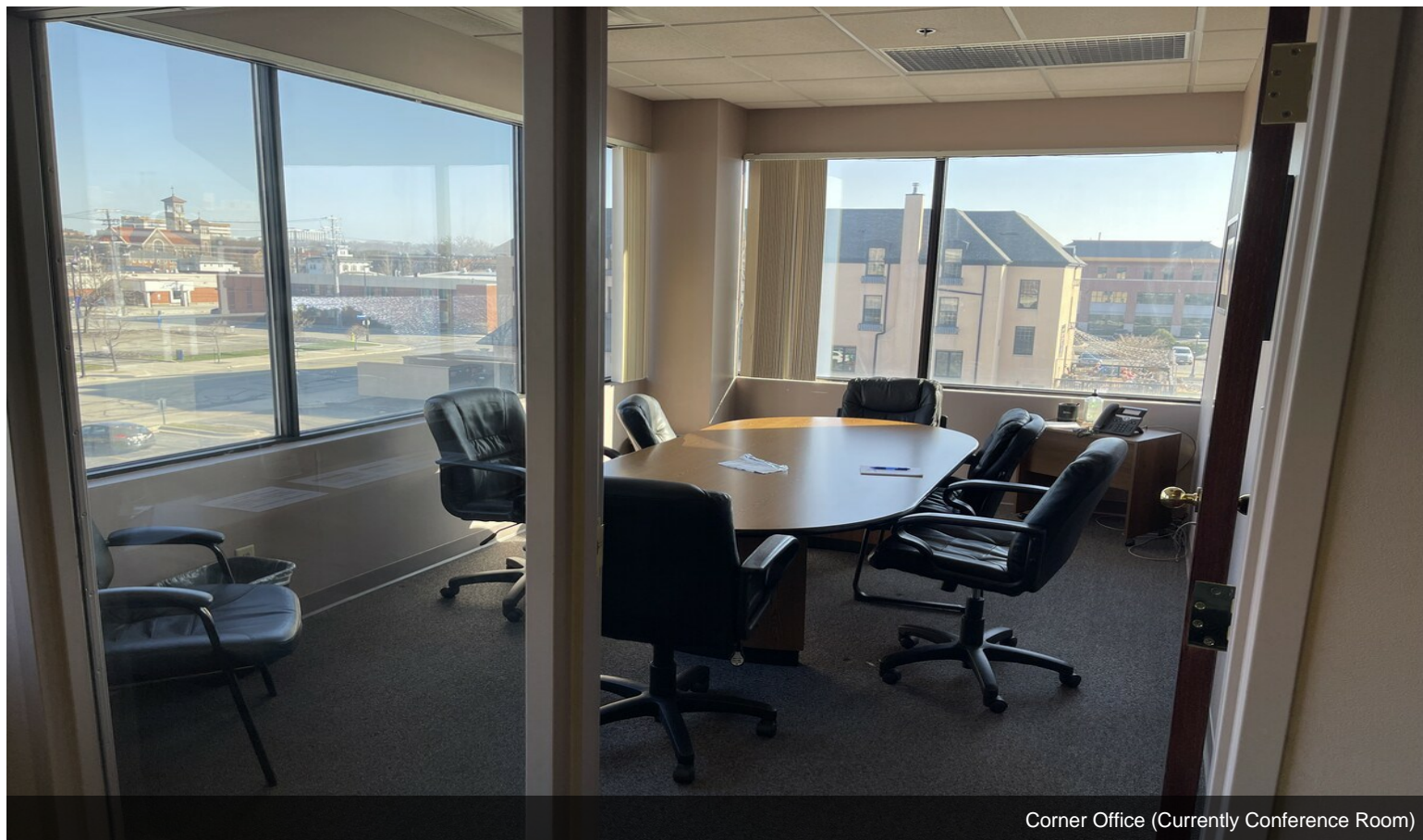


Common Area

Property Photos

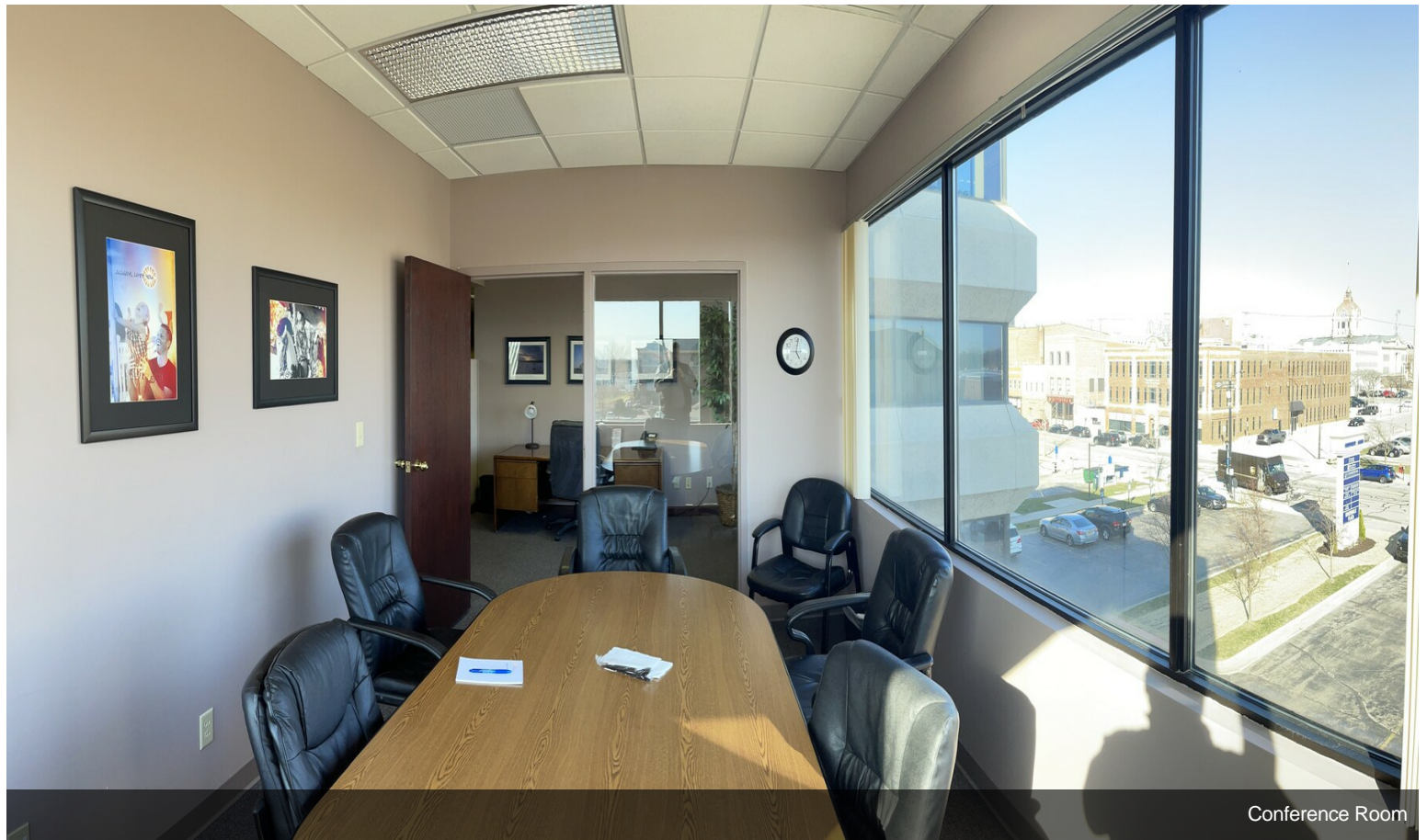


Workstation

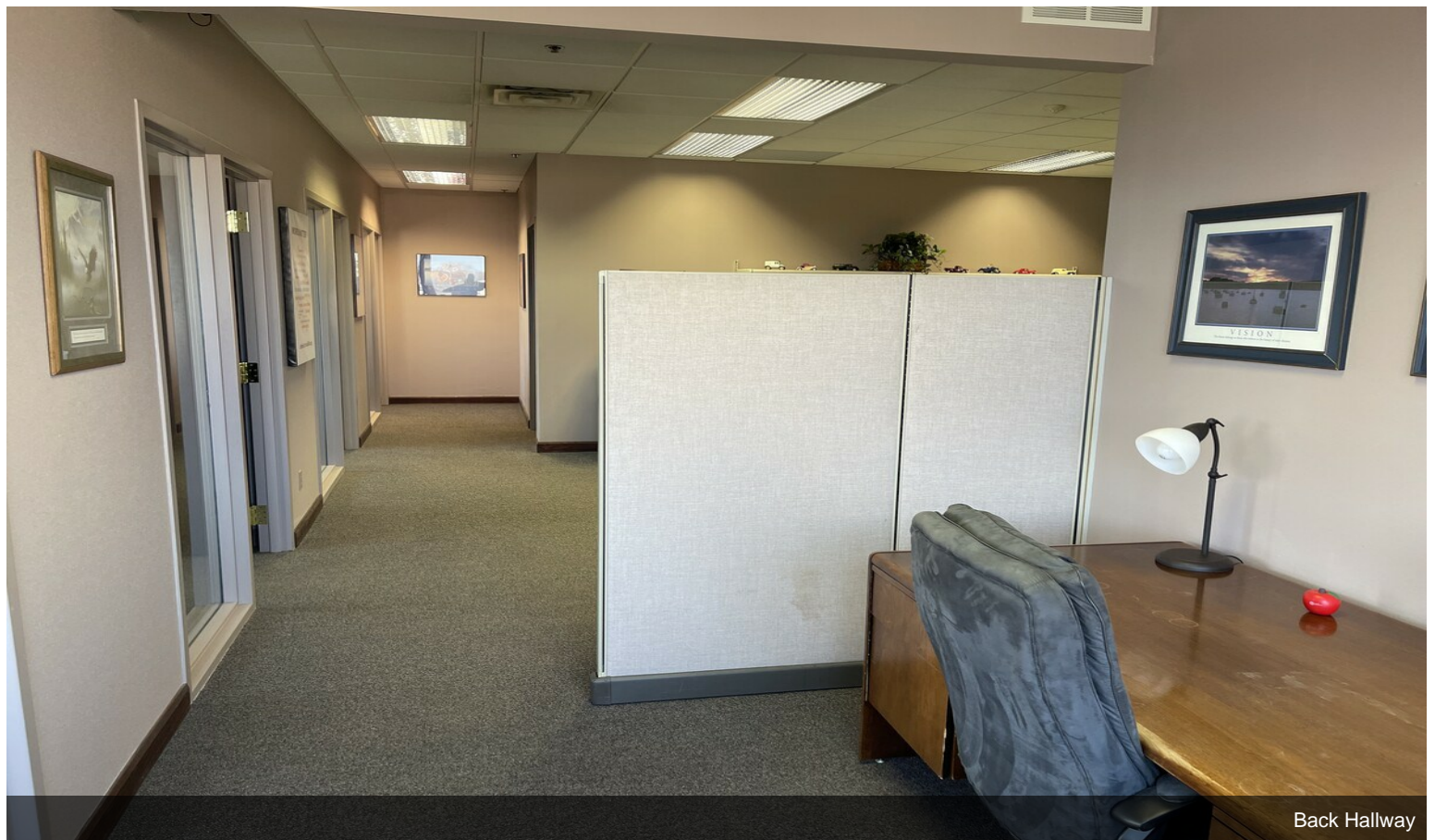


Corner Office (Currently Conference Room)

Property Photos

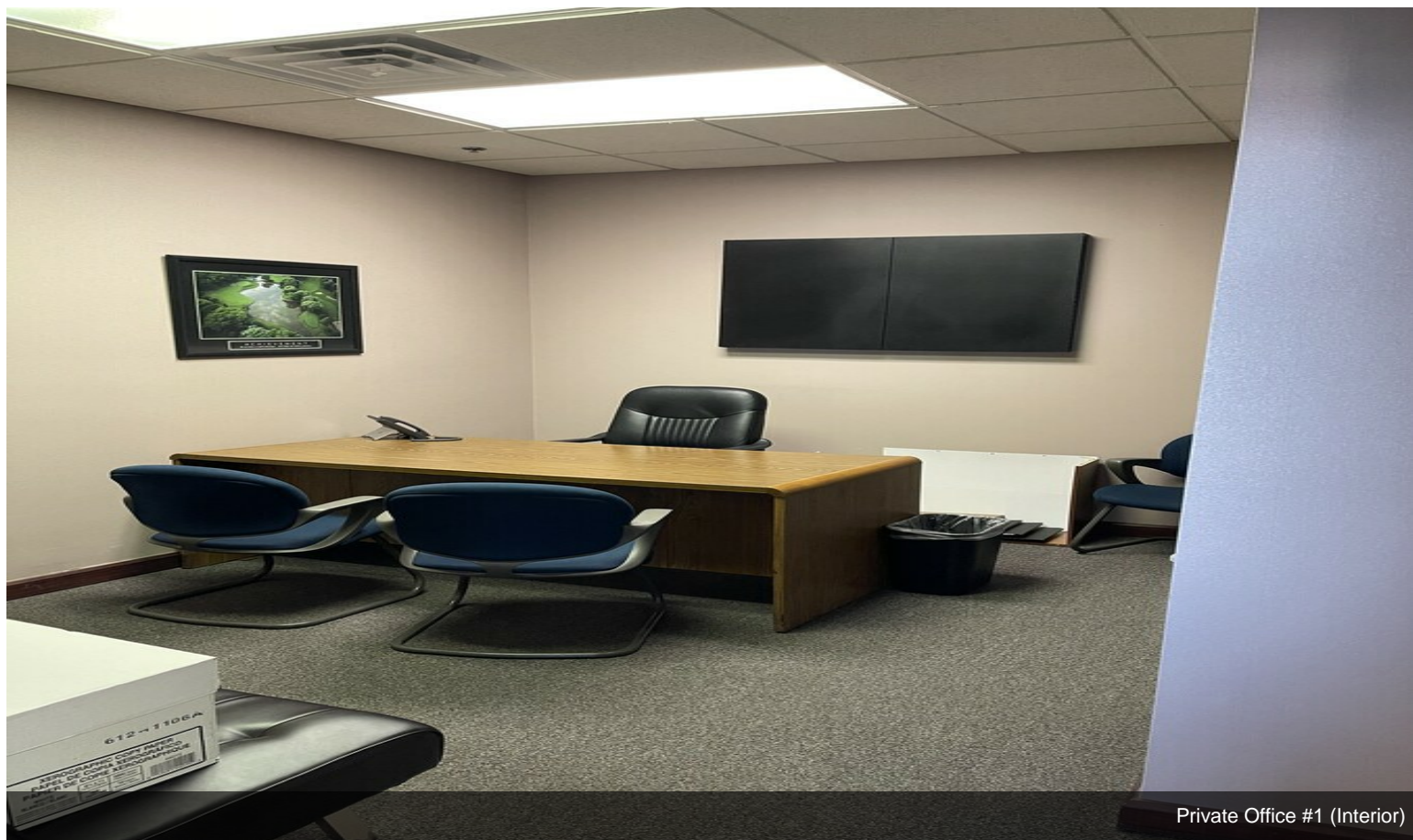


Conference Room



Back Hallway

Property Photos



Private Office #1 (Interior)



Private Office #1 (Interior)

Property Photos

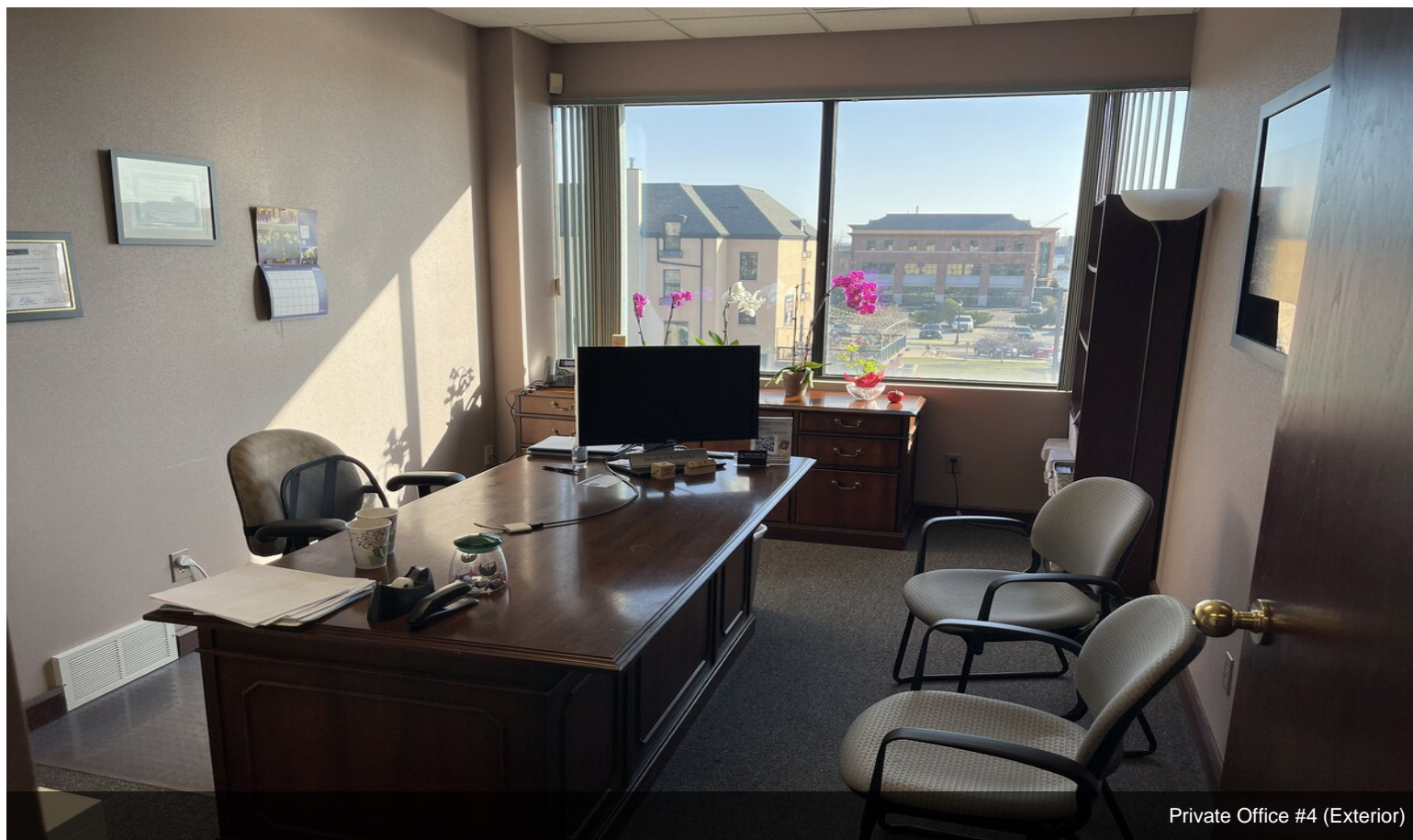


Private Office #2 (Exterior)

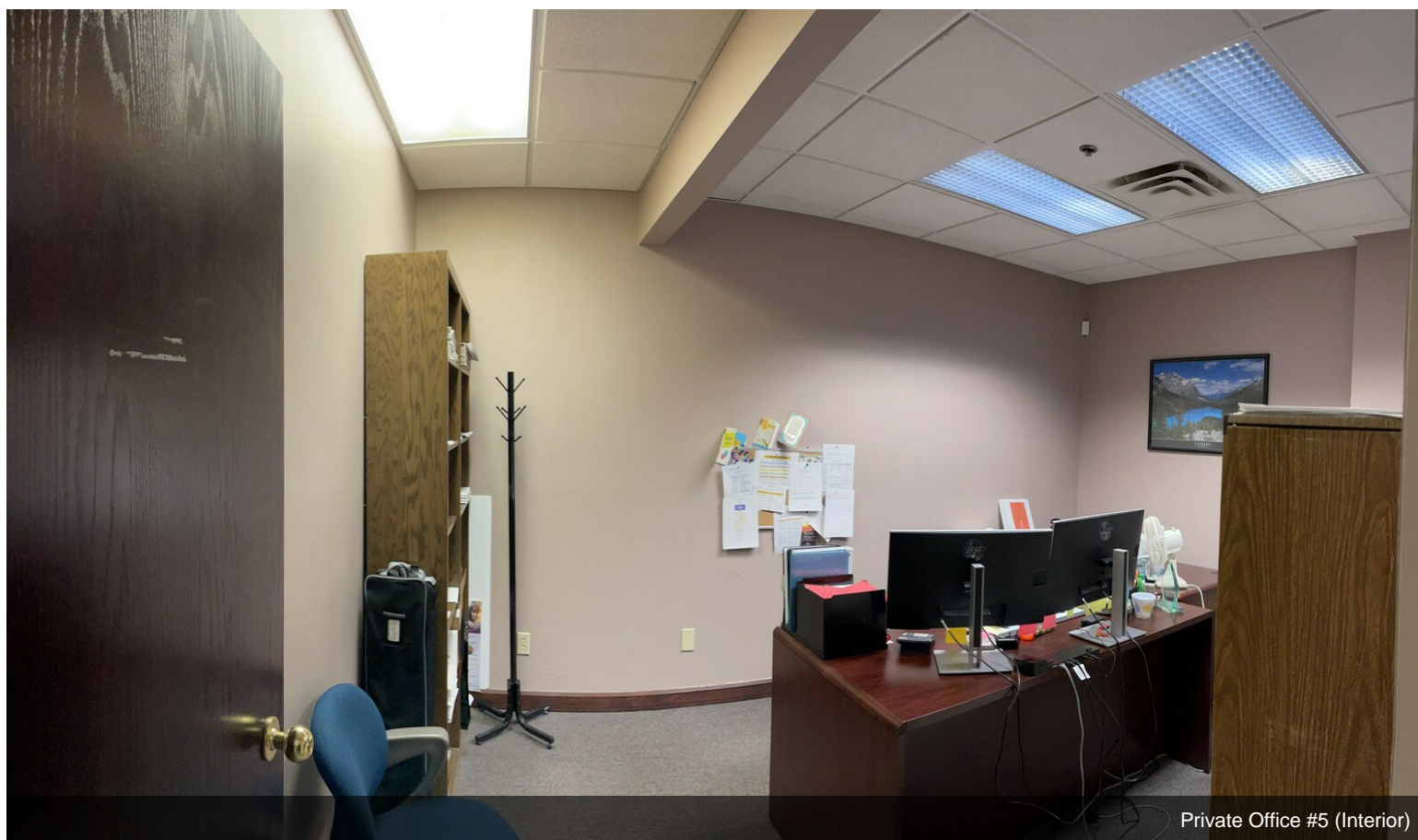


Private Office #3 (Exterior)

Property Photos



Private Office #4 (Exterior)



Private Office #5 (Interior)

Property Photos



Kitchenette